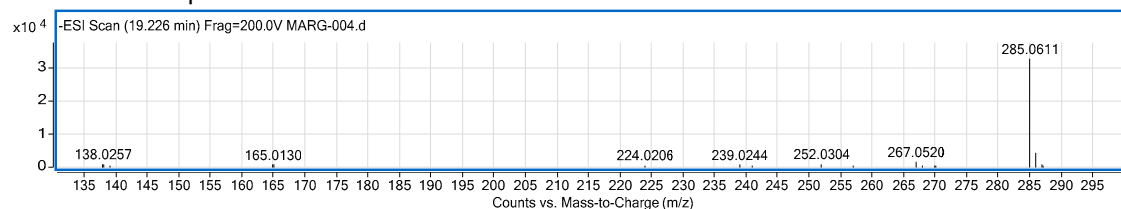


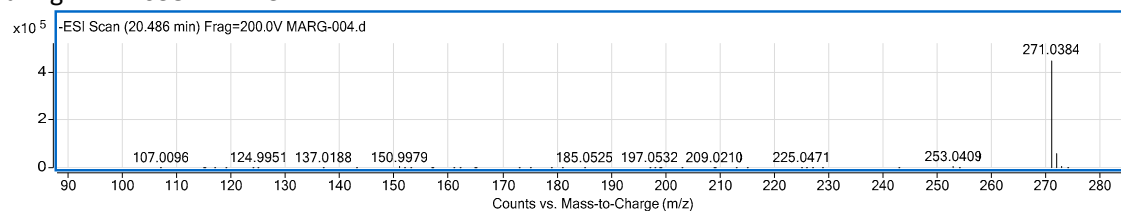
## HPLC-TOF-MS

Mass spectrum of the compounds detected.

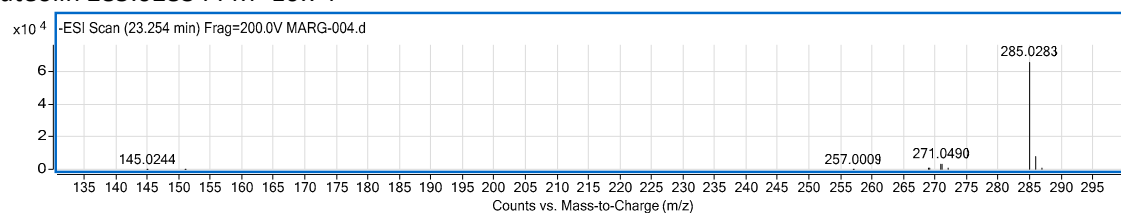
### Unidentified compound



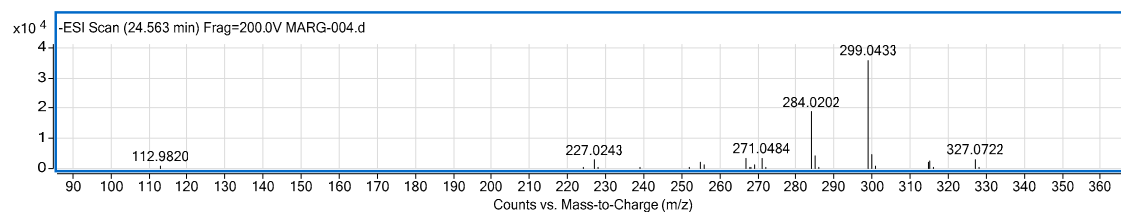
### Naringin 271.0384 PPM 3.1



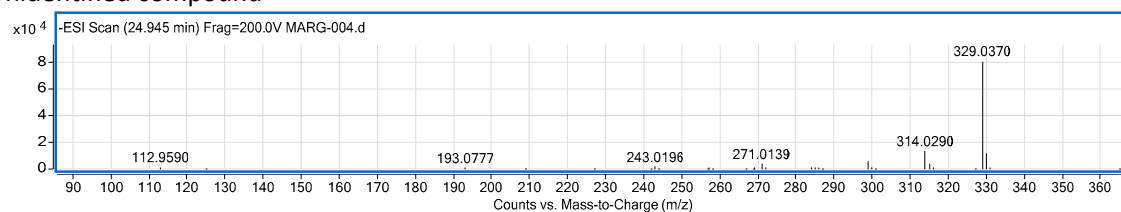
### Luteolin 285.0283 PPM -10.74



### Unidentified compound

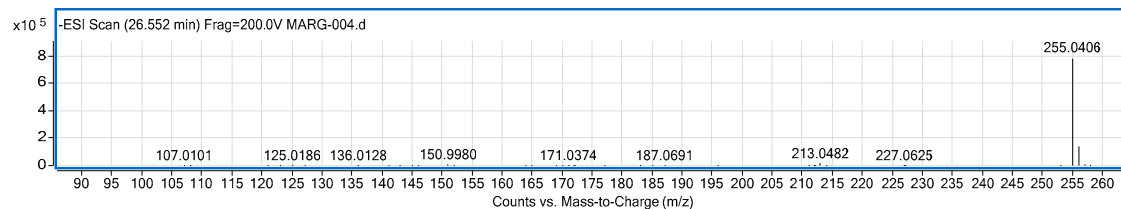


### Unidentified compound

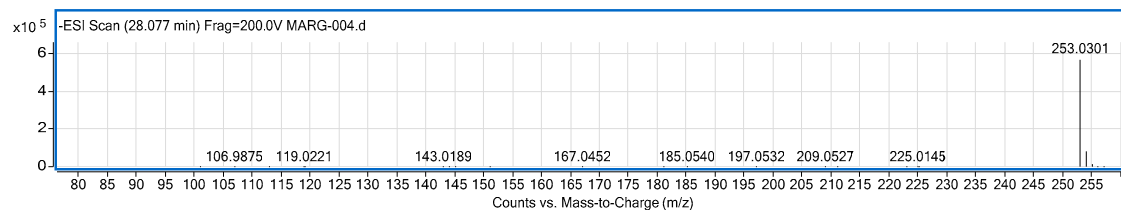


Pinocembrin 255.0406 PPM 3.95

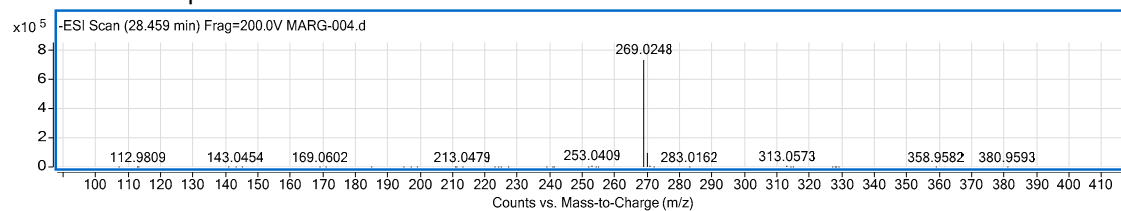
Unidentified compound



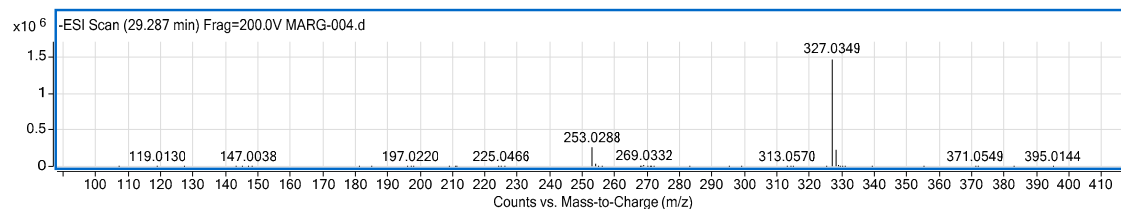
Chrysin 253.0301 PPM -1.58



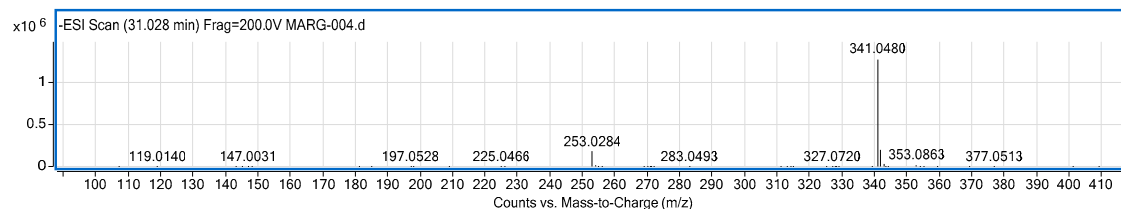
Unidentified compound



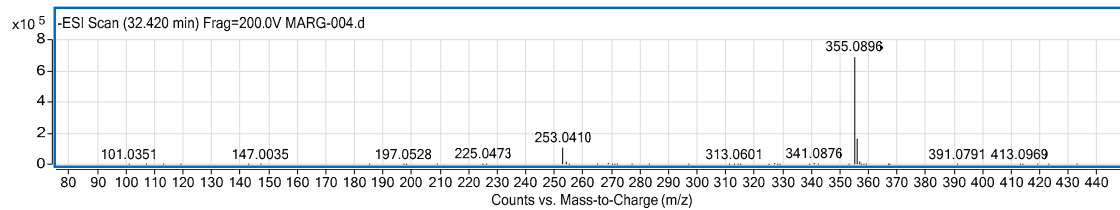
Unidentified compound



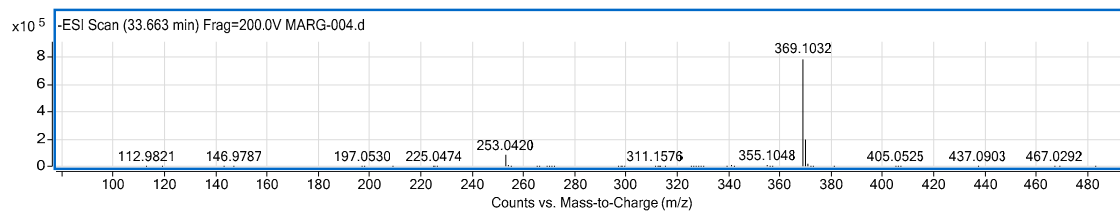
Unidentified compound



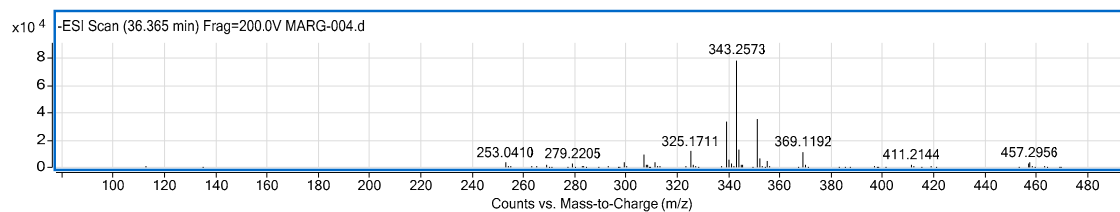
### Unidentified compound



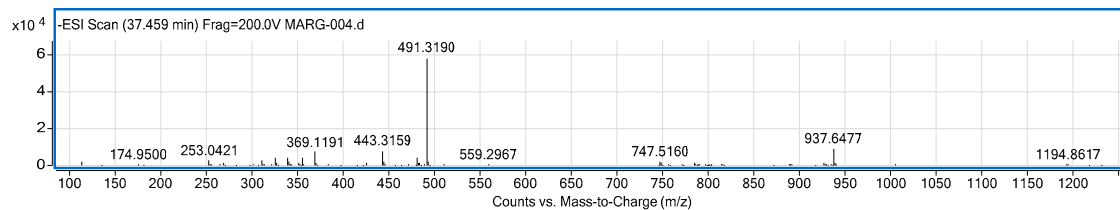
### Unidentified compound



### Unidentified compound



### Unidentified compound



### Unidentified compound

