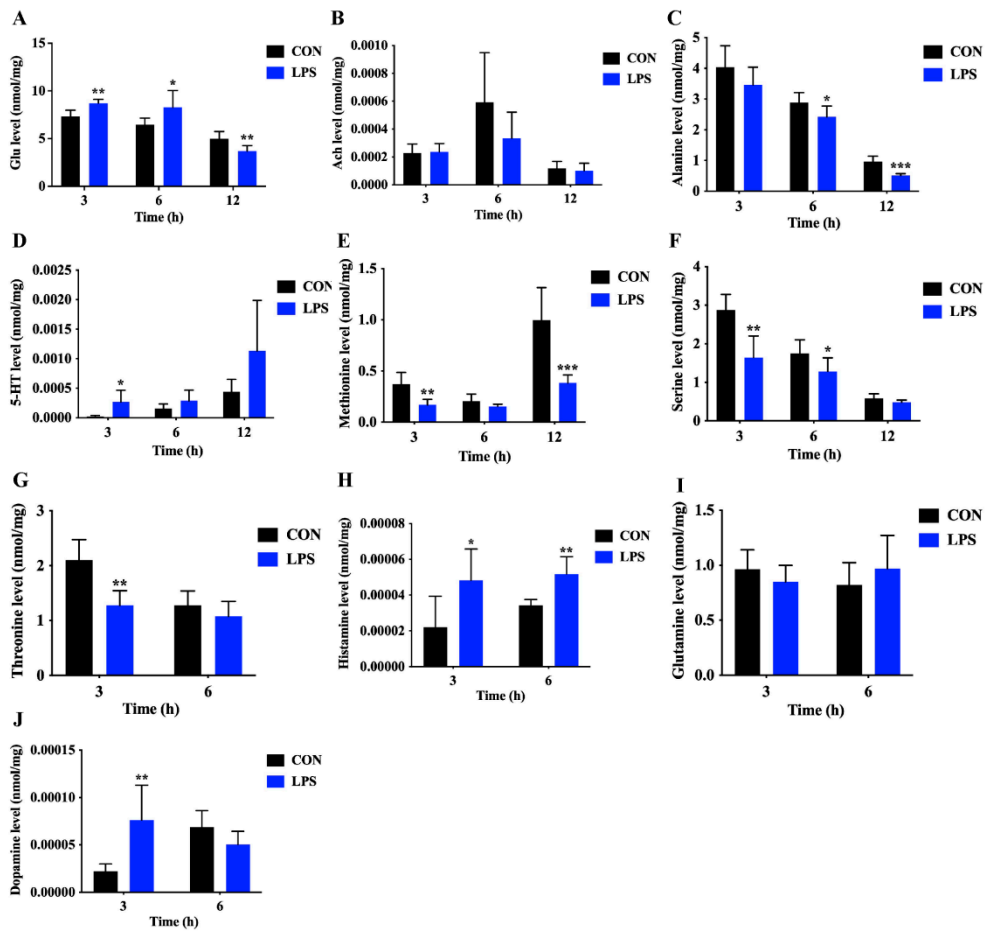
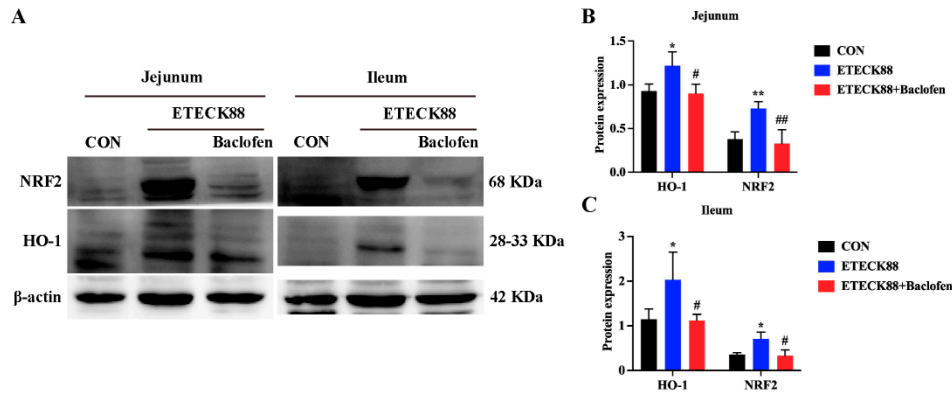


Supplemental materials



Supplementary Figure S1. Neurotransmitter levels in ileal tissue at different time points.

(A-J) UHPLC-MS/MS of Glu, Ach, alanine, 5-HT, methionine, serine, threonine, histamine, glutamine and dopamine at different time points. Data are shown as mean \pm SD. * indicates that the difference between the CON and the LPS is significant ($P < 0.05$). ** or *** indicates that the difference between the CON and the LPS is extremely significant ($P < 0.01$ or $P < 0.001$).



Supplementary Figure S2. GABA_BR activation could reduce oxidative stress in ETECK88-induced mice. (A-C) WB analysis the expression of NRF2 and HO-1 in ileal tissues of mice. For WB, expression levels were normalized to the expression of β -actin. Data are shown as mean \pm SEM. * indicates that the difference between the CON and the ETECK88 is significant ($P < 0.05$). ** indicates that the difference between the CON and the ETECK88 is extremely significant ($P < 0.01$). # indicates that the difference between the ETECK88 and the ETECK88 + Baclofen is significant ($P < 0.05$). ## indicates that the difference between the ETECK88 and the ETECK88 + Baclofen is extremely significant ($P < 0.01$).