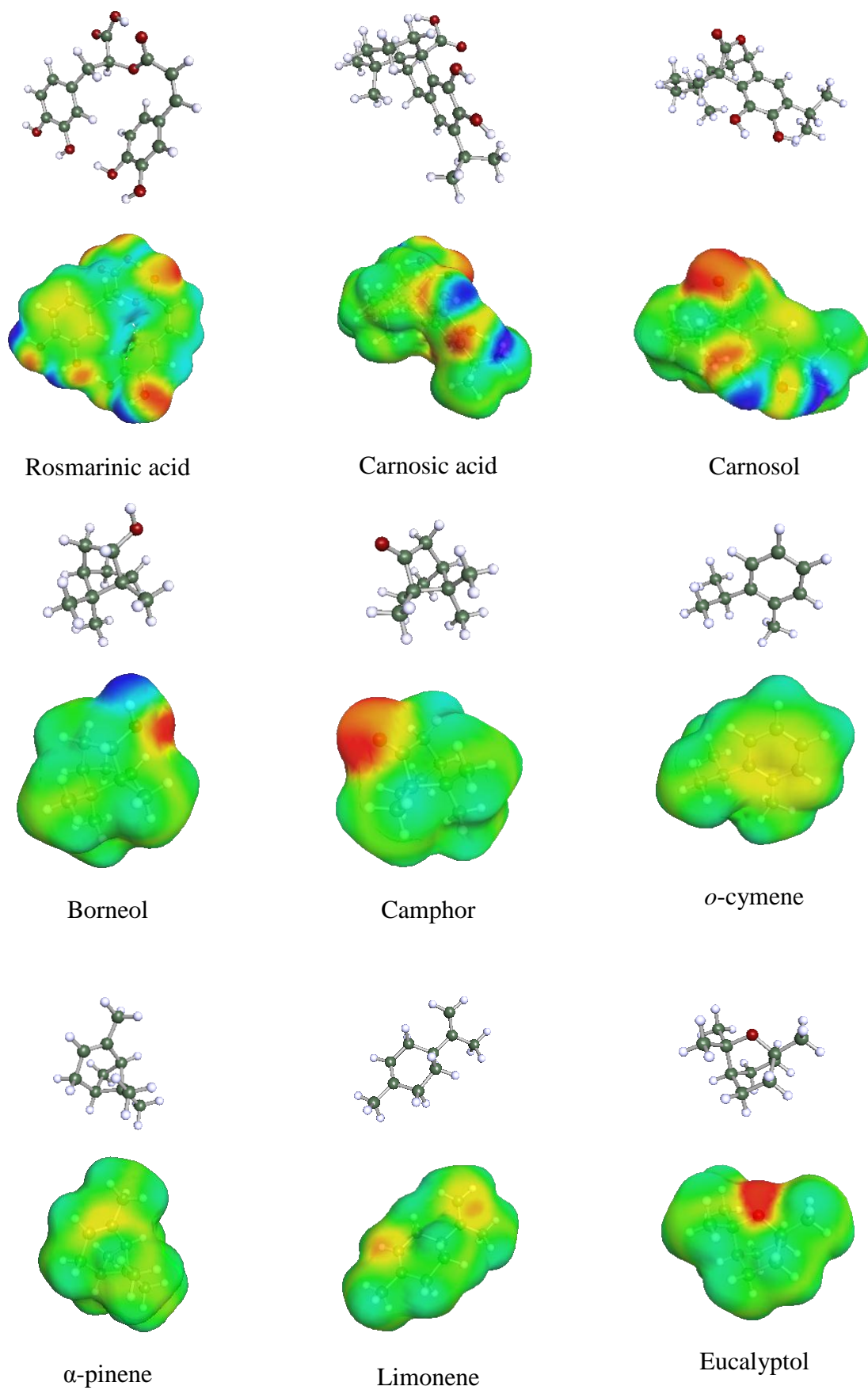


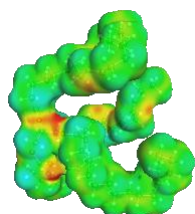
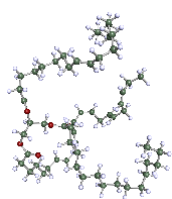
Supplementary materials

Figure S1: Three-dimensional chemical structures and σ -surfaces of both volatile and non-volatile solutes, triglyceride possibilities in refined soybean oils and oil amphiphilic derivatives generated by COSMO-RS.

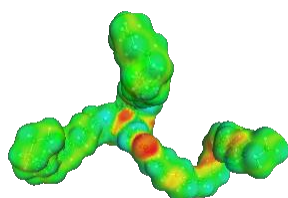
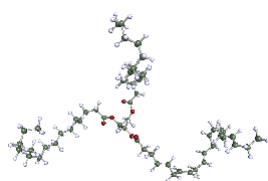
Figure S2: Major volatile aroma compounds (VACs) in rosemary oleo-extracts determined by HS-SPME/GC-MS using (a) refined vegetable oils and (b) refined soybean oil with addition of oil derivatives as solvents, (c) the content of total monoterpenes *versus* total oxygenated monoterpenes in various oily solvent systems.

Figure S1.

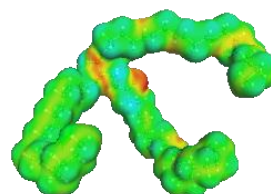
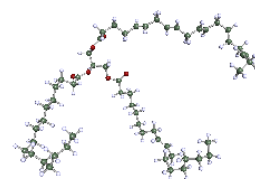




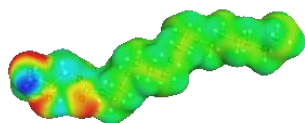
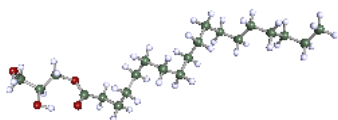
TAG 3



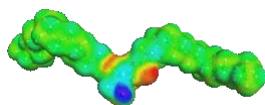
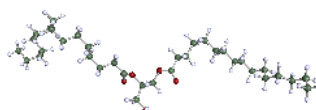
TAG 1



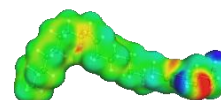
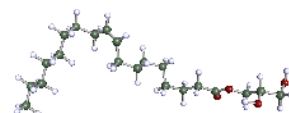
TAG 2



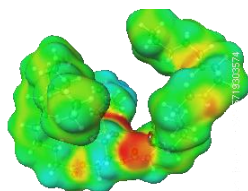
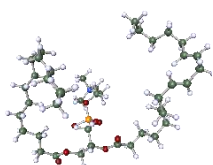
Glycerol monostearate (GMS)



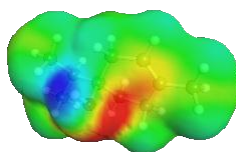
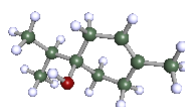
Diglyceride



Glycerol monooleate (GMO)



Lecithin



Terpinene-4-ol

Figure S2.

