

# **SUPPORTING INFORMATIONS**

## **CDDO-Me distinctly regulates regional specific astroglial responses to status epilepticus via ERK1/2-Nrf2, PTEN-PI3K-AKT and NFκB signaling pathways**

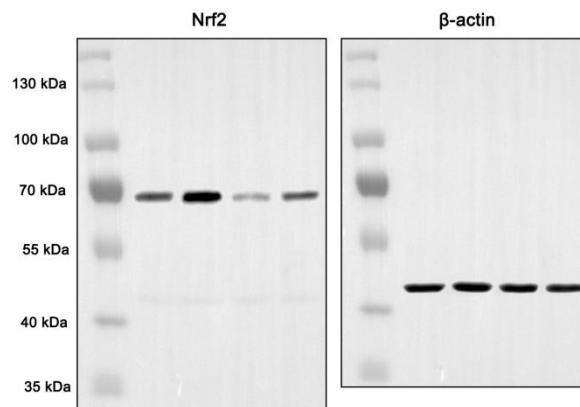
Ji-Eun Kim<sup>1,2</sup>, Hana Park<sup>1,2</sup>, Tae-Cheon Kang<sup>1,2\*</sup>

<sup>1</sup>Department of Anatomy and Neurobiology, College of Medicine, Hallym University, Chuncheon 24252,  
South Korea

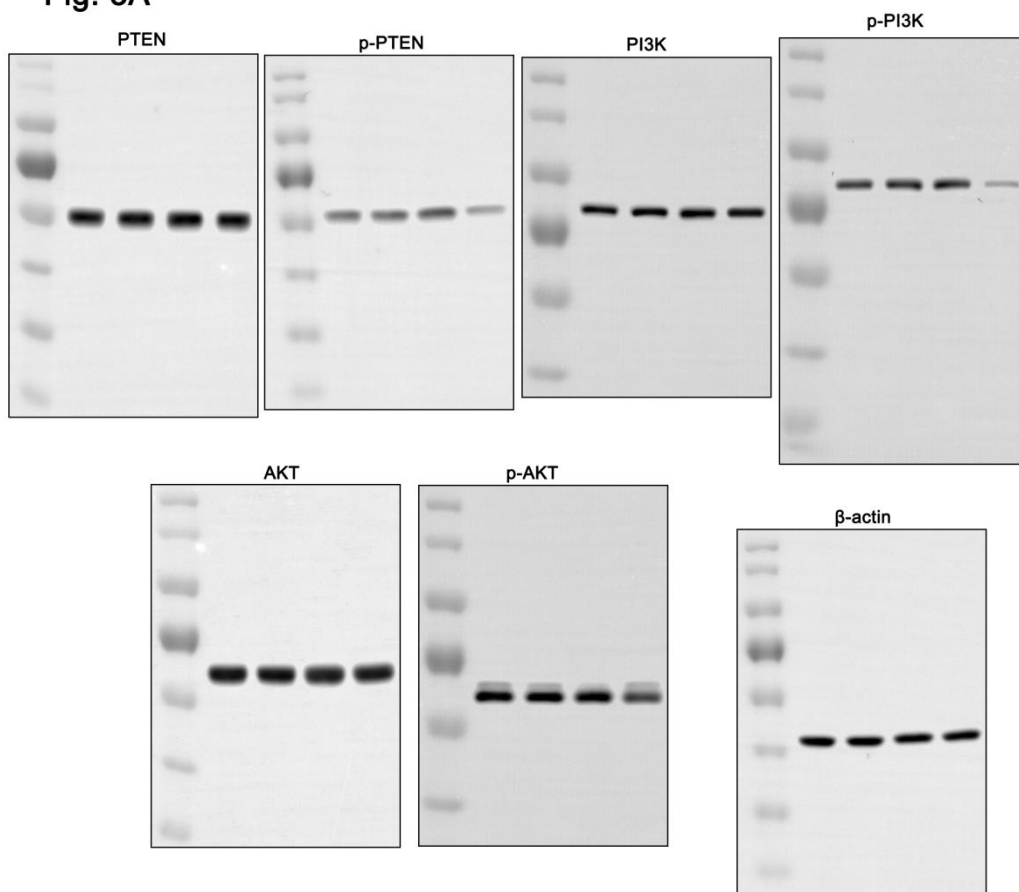
<sup>2</sup>Institute of Epilepsy Research, College of Medicine, Hallym University, Chuncheon 24252, South Korea

\* Correspondence to: T. -C. Kang, Department of Anatomy and Neurobiology, College of Medicine, Hallym University, Chuncheon, Kangwon-Do 24252, South Korea; Tel: +82-33-248-2524; Fax: +82-33-248-2525; E-mail: tckang@hallym.ac.kr

**Fig. 1A**

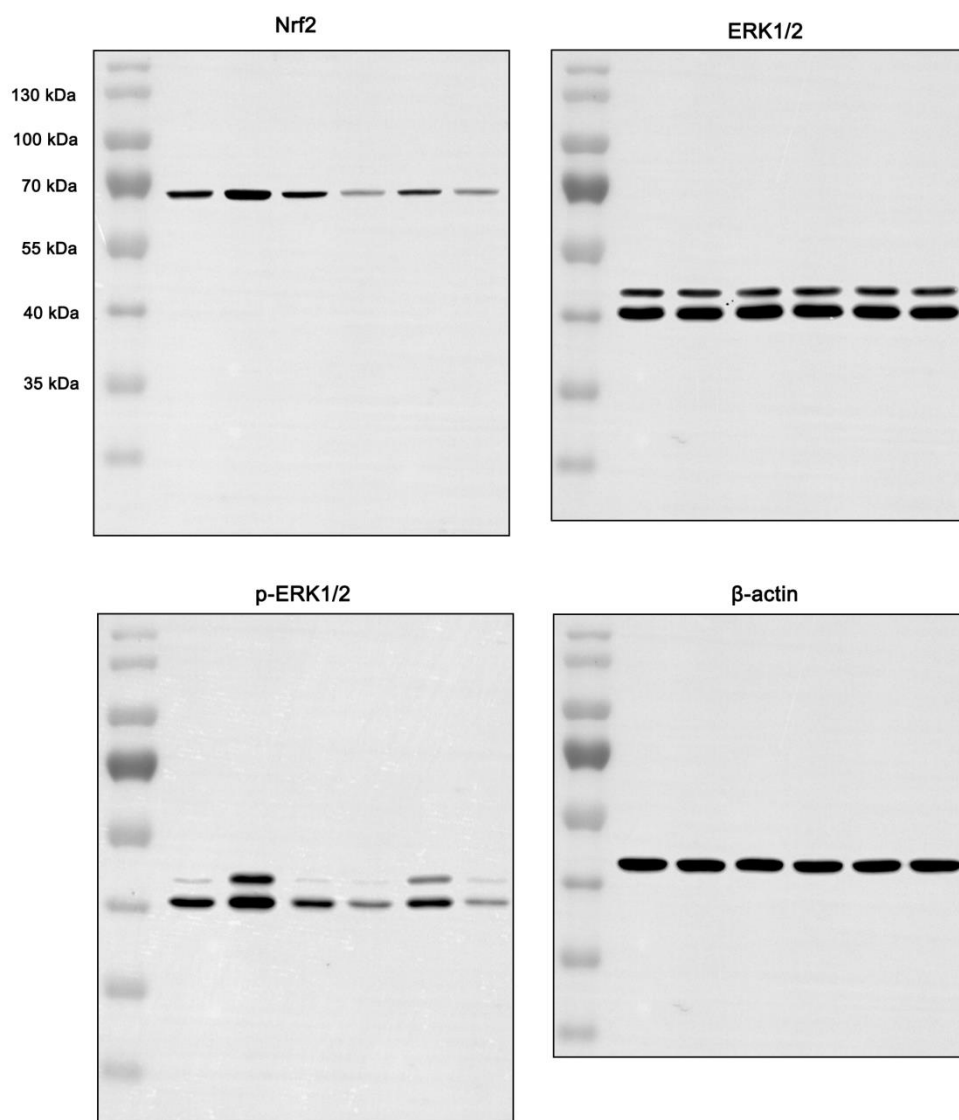


**Fig. 3A**



Supplementary Figure 1. Full-gel images of Western blots in Fig. 1A and 3A.

**Fig. 6A**



Supplementary Figure 2. Full-gel images of Western blots in Fig. 6A.