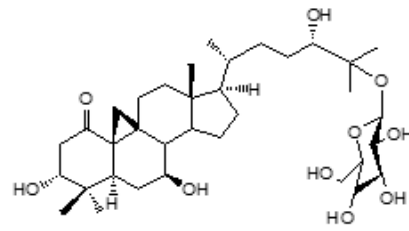
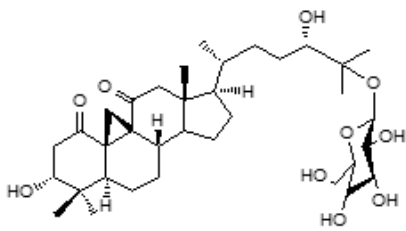


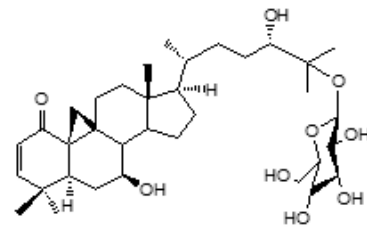
Sutherlandioside A



Sutherlandioside B

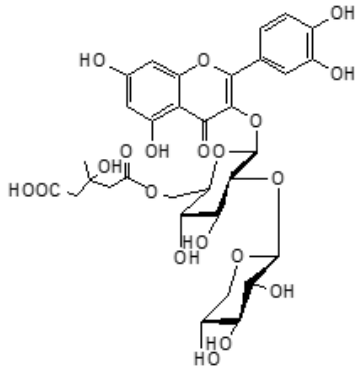


Sutherlandioside C

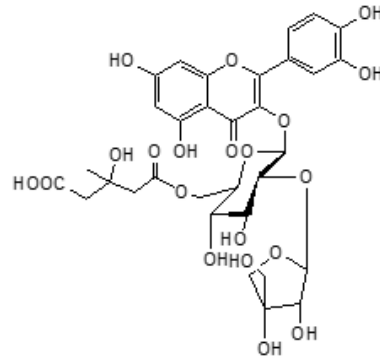


Sutherlandioside D

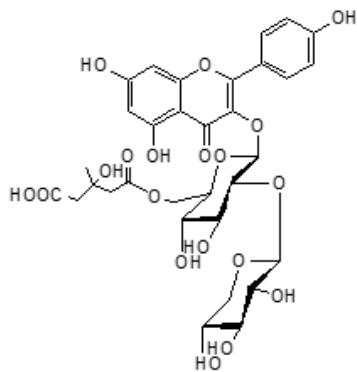
Figure S1 Structures of terpenoidal saponins (sutherlandiosides) specific to *Sutherlandia frutescens* extracts



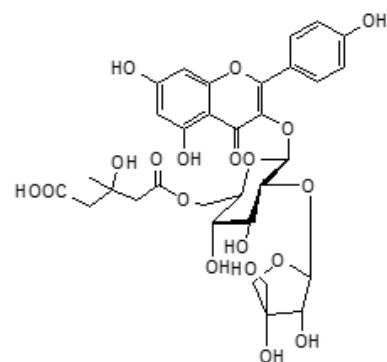
Sutherlandin A (Quercetin)



Sutherlandin B



Sutherlandin C (Kaempferol)



Sutherlandin D

Figure S2. Structures of flavonoids specific (sutherlandins) to *Sutherlandia frutescens* extracts.

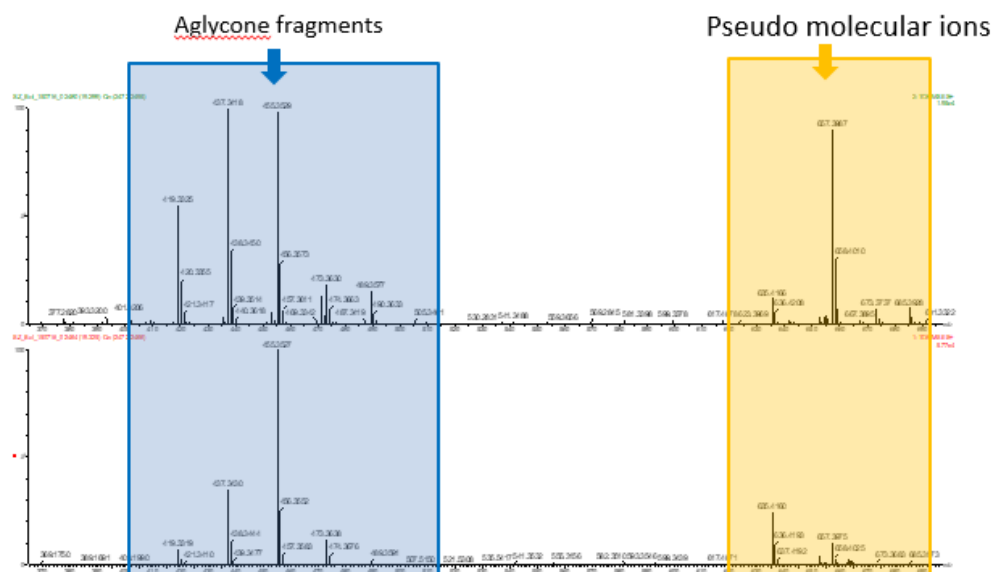


Figure S3. Example MS spectra showing the low energy scan below and the high energy scan above, with the typical sutherlandioside aglycone fragments, m/z 455, 437, 419, 473 and 489 and the M+H (m/z 653), and, M+Na (m/z 657) ions.