

Figure S1. The ratio of IgG2a/IgG1. In order to more intuitively determine the type of T helper responses, the value of OD IgG2a/OD IgG1 was calculated.

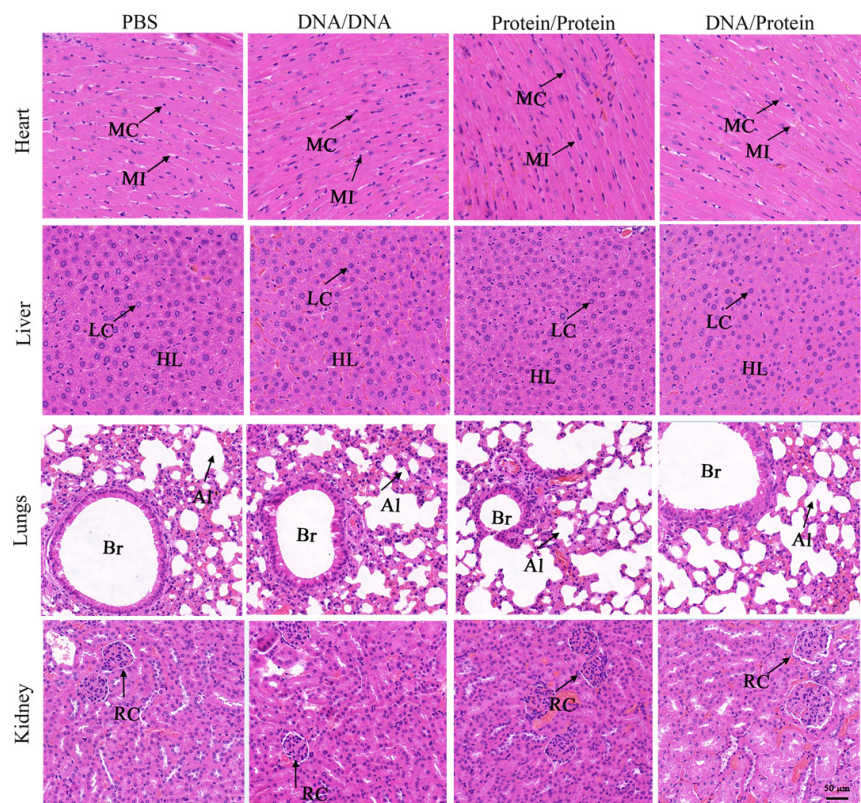


Figure S2. Micrographs of HE-stained mouse heart, liver, lung, and kidney after the booster immunization. MI: myocardial interstitium. MC: cardiomyocytes. LC: liver cell. HL: hepatic lobules. Al: alveoli. Br: bronchus. RC: renal corpuscle. Magnification 200 ×. Bar: 50 µm.

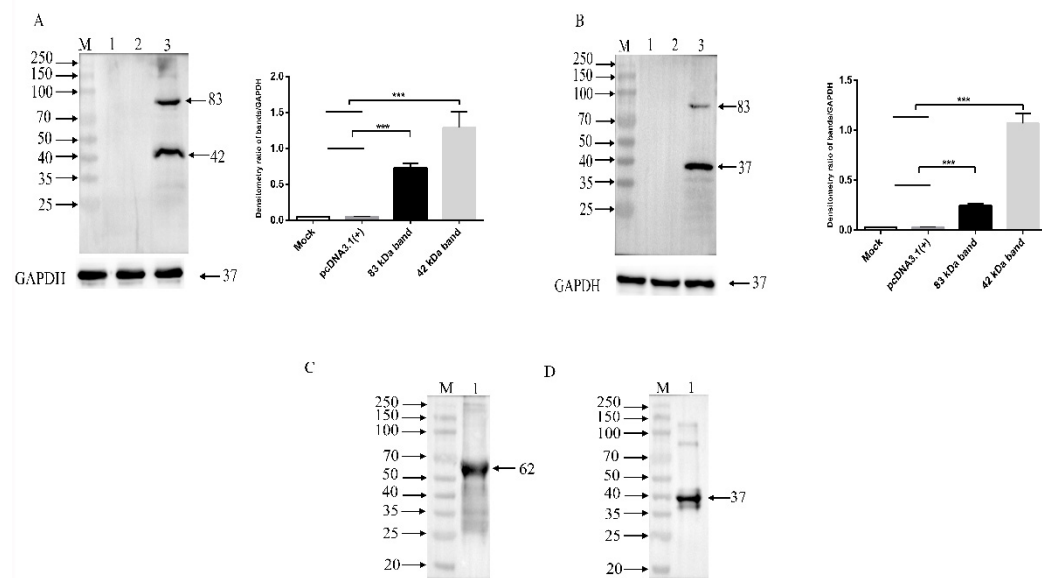


Figure S3. Western blot assay. A and B: OFTu cells transfected with pcDNA3.1-HA-B2L-P2A-Flag-F1L plasmid were quantified and normalized to GAPDH. C: the purified recombinant B2L protein, the intensity of 62 kDa band is about 122322. D: the purified recombinant cF1L protein, the intensity of 37 kDa band is about 49511.

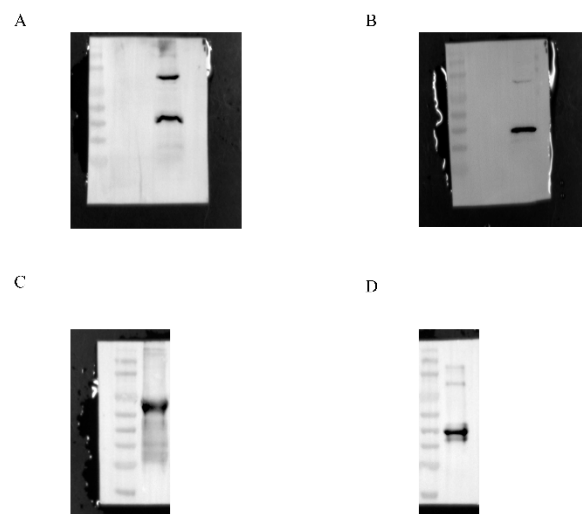


Figure S4. Corresponding to Figure S1, uncropped Western blots