

# Supplementary Materials: Neonatal Genetic Delivery of Anti-Respiratory Syncytial Virus (RSV) Antibody by Non-Human Primate-Based Adenoviral Vector to Provide Protection against RSV

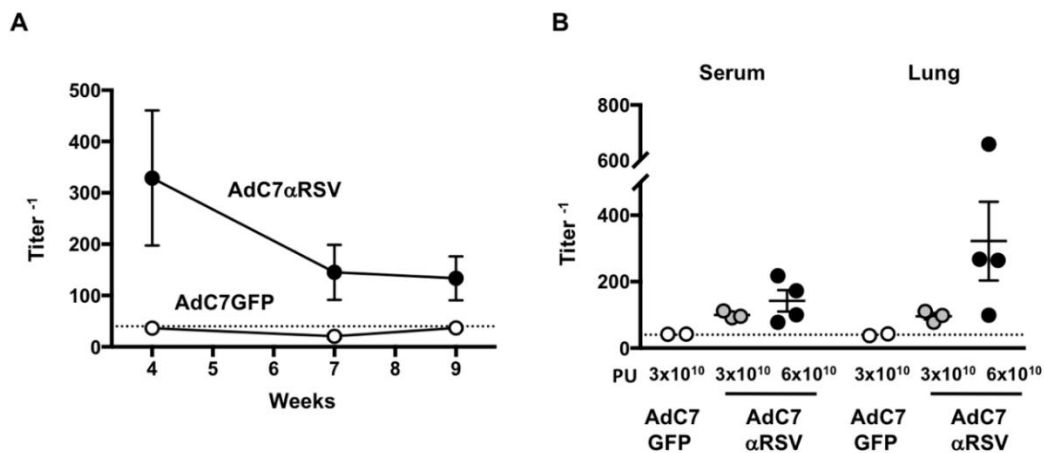
Rika Gomi <sup>1</sup>, Anurag Sharma <sup>1</sup>, Wenzhu Wu <sup>1</sup> and Stefan Worgall <sup>1,2,\*</sup>

<sup>1</sup> Department of Pediatrics, Weill Cornell Medicine, New York, NY, 10065 USA; rig2015@med.cornell.edu (R.G.); anurag1077@gmail.com (A.S.); wew2005@med.cornell.edu (W.W.)

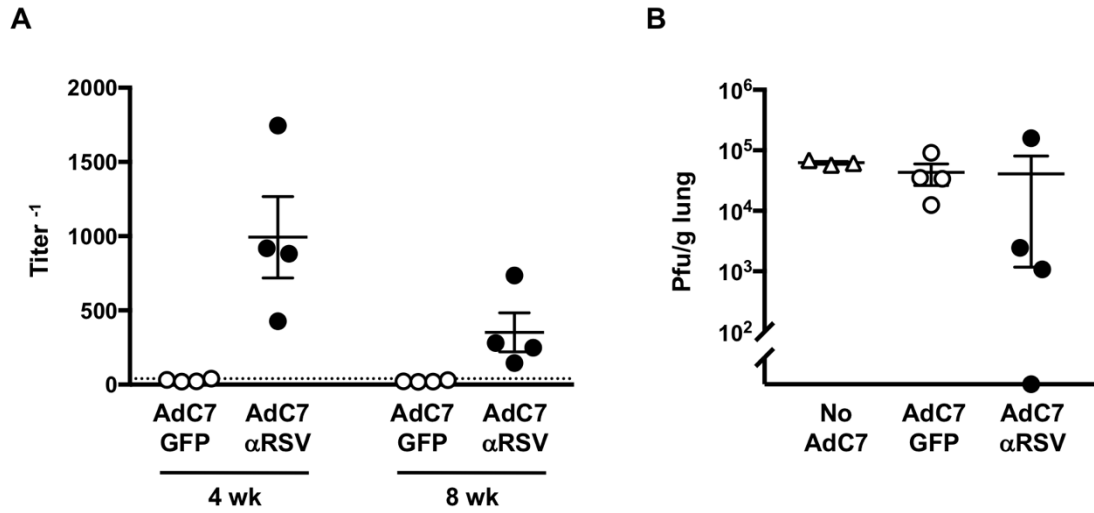
<sup>2</sup> Department of Genetic Medicine, Weill Cornell Medicine, New York, NY 10065 USA

\* Correspondence: stw2006@med.cornell.edu; Tel.: +1-646-962-6236

Received: 1 December 2018; Accepted: 22 December 2018; Published: 29 December 2018



**Figure S1.** Assessment of anti-respiratory syncytial virus (anti-RSV) IgG expression in neonatal mice. **(A)** Kinetics of anti-RSV IgG. Chimpanzee adenovirus type 7 vector (AdC7) expressing murine anti-RSV antibody (AdC7αRSV) or AdC7 with green fluorescent protein but without transgene expression (AdC7GFP) ( $3 \times 10^{10}$  pu each) was intranasally administered to 1-day-old BALB/c mice. Serum was collected at 4, 7 and 9 weeks after the administration and titers were measured by ELISA. The titers in mice that had received AdC7αRSV are shown as mean  $\pm$  SEM of 7 mice per group. **(B)** Anti-RSV IgG in the serum and lung homogenate supernatants after 14 weeks following Ad vector administration. AdC7αRSV ( $3 \times 10^{10}$  or  $6 \times 10^{10}$  pu) or AdC7GFP ( $3 \times 10^{10}$  pu) was intranasally administered to 1-day-old BALB/c mice. Serum and Lungs were collected 14 weeks after the administration and titers were measured by ELISA. The titers in mice that had received AdC7αRSV are shown with mean  $\pm$  SEM.



**Figure S2.** Protection against RSV infection 10 weeks following AdC7αRSV administration to neonatal mice. AdC7αRSV or AdC7GFP ( $7 \times 10^{10}$  pu) were intranasally administered to 1-day-old BALB/c mice followed by RSV rA2-L19 ( $5 \times 10^6$  pfu) challenge at 10 weeks of age. **(A)** Anti-RSV IgG titers in the serum before the RSV challenge. Serum was collected at 4 and 8 weeks after the administration of AdC7αRSV and titers were measured by ELISA. The titers in mice that had received AdC7αRSV are shown with mean  $\pm$  SEM. **(B)** RSV viral loads in the lungs 4 days after the RSV challenge by plaque assay. Titters are shown with mean  $\pm$  SEM.