

Table S1. Peptides used for the Pepscan-based ELISA screen in Figure 3A and B.

Start (residue no.)	End (residue no.)	Native sequence	Mutated sequence
1	10	ASNTVMKNCN	ASNTV AA NCN
2	11	SNTVMKNCNY	SNTVM AA CNY
3	12	NTVMKNCNYK	NTVMK AA NYK
4	13	TVMKNCNYKR	TVMKN AA YKR
5	14	VMKNCNYKRK	VMKNC AA KRK
6	15	MKNCNYKRKR	MKNCN AA KRK
7	16	KNCNYKRKRR	KNCNY AA KRR
8	17	NCNYKRKRRE	NCNYK AA RRE
9	18	CNYKRKRRE	CNYKR AA RER
10	19	NYKRKRRE	NYKRK AA ERD
11	20	YKRKRRE	YKRKR AA RDW
12	21	KRKRRE	KRKR AA DWD
13	22	RKRRE	RKRRE AA WDC
14	23	KRRE	KRRE AA DCN
15	24	RRER	RRER AA CNT
16	25	RER	RER AA NTK
17	26	ERD	ERD AA TKK
18	27	RD	RD AA KKD
19	28	D	D AA KDV
20	29	WDC	WDC AA DVC
21	30	DC	DC AA VCI
22	31	CNT	CNT AA CIP
23	32	NT	NT AA IPD
24	33	TKK	TKK AA PDR
25	34	KKD	KKD AA DRR
26	35	KD	KD AA RRY
27	36	D	D AA RYQ
28	37	V	V AA YQL
29	38	C	C AA QLC
30	39	I	I AA LCM
31	40	P	P AA CMK
32	41	DR	DR AA MKE
33	42	RR	RR AA KEL
34	43	R	R AA ELT
35	44	Y	Y AA LTN
36	45	Q	Q AA TNL
37	46	L	L AA NLV

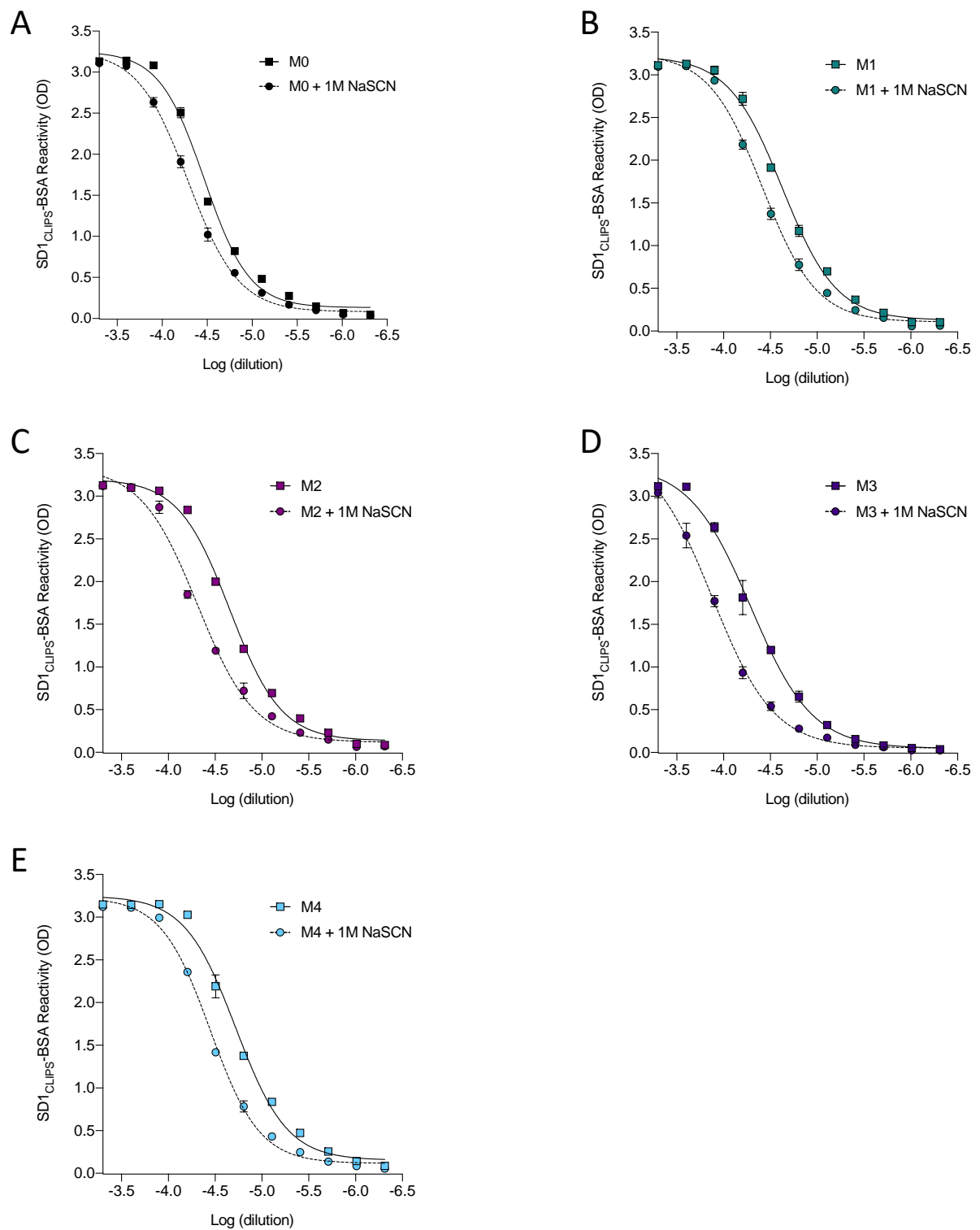


Figure S1. The avidity of individual mouse serum against SD1_{CLIPS}-BSA. (A-E) The avidity of individual serum samples for SD1_{CLIPS}-BSA was determined by titrating serum against this antigen with and without the addition of 1M NaSCN. Data are mean ± SD.