

*Supplementary Materials*

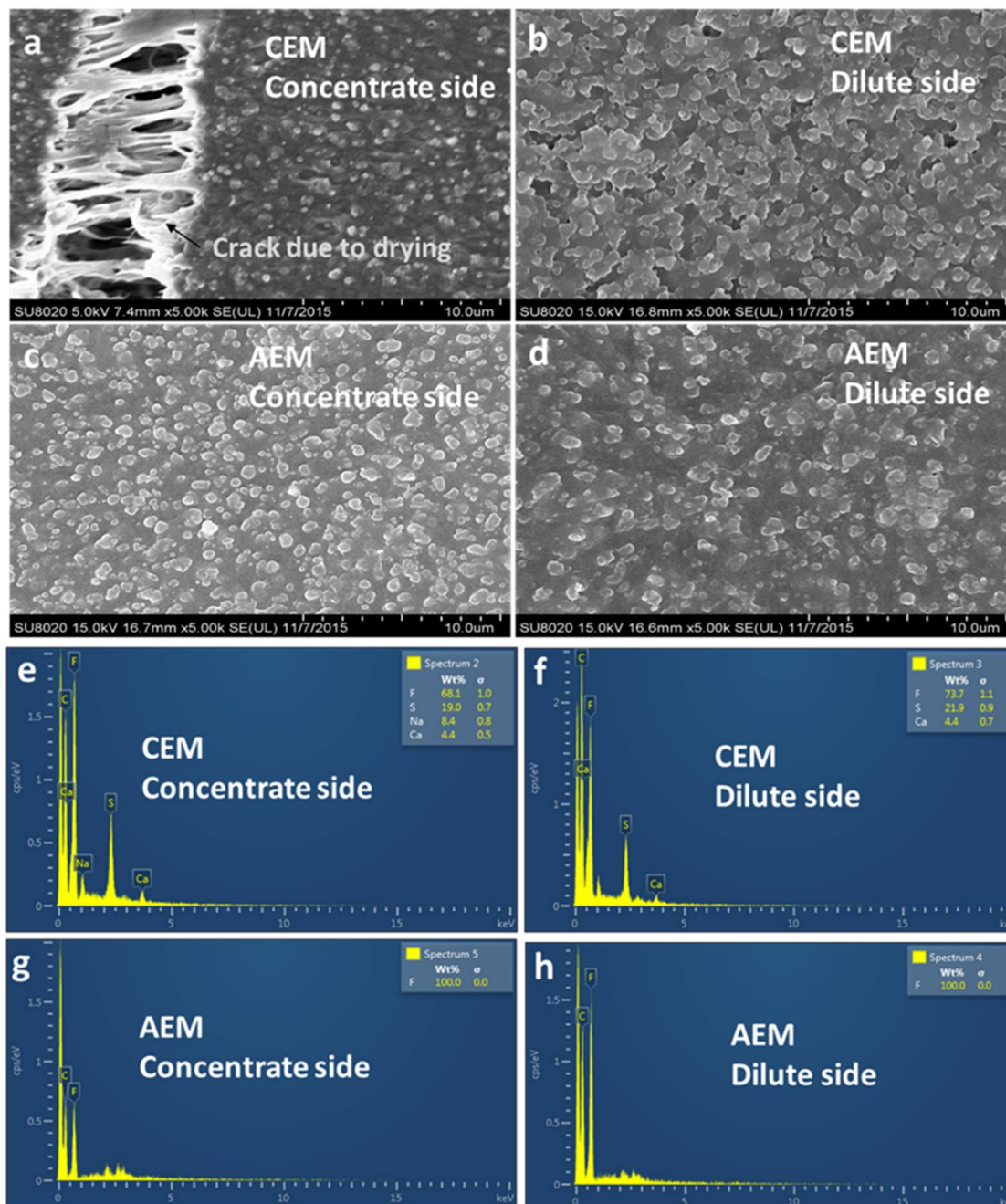
# Supplementary Materials: Electrodialytic Desalination of Tobacco Sheet Extract: Membrane Fouling Mechanism and Mitigation Strategies

Shaolin Ge <sup>1</sup>, Zhao Zhang <sup>1</sup>, Haiyang Yan <sup>2,3</sup>, Muhammad Irfan <sup>2</sup>, Yingbo Xu <sup>1</sup>, Wei Li <sup>3</sup>, Huangying Wang <sup>2</sup> and Yaoming Wang <sup>2,3,\*</sup>

- <sup>1</sup> China Tobacco Anhui Industrial Co., LTD, Hefei 230088, China; [slge@mail.ustc.edu.cn](mailto:slge@mail.ustc.edu.cn) (S.G.); [zhaoz@mail.ustc.edu.cn](mailto:zhaoz@mail.ustc.edu.cn) (Z.Z.); [xuybah@hotmail.com](mailto:xuybah@hotmail.com) (Y.X.)
  - <sup>2</sup> CAS Key Laboratory of Soft Matter Chemistry, Laboratory of Functional Membranes, School of Chemistry and Materials Science, University of Science and Technology of China, Hefei 230026, China; [engr\\_muhammad.irfan@hotmail.com](mailto:engr_muhammad.irfan@hotmail.com) (M.I.); [oceanyan@ustc.edu.cn](mailto:oceanyan@ustc.edu.cn) (H.Y.); [why921@mail.ustc.edu.cn](mailto:why921@mail.ustc.edu.cn) (H.W.)
  - <sup>3</sup> Hefei ChemJoy Polymer Materials, Co., LTD, Hefei 230601, China; [liweij8991@126.com](mailto:liweij8991@126.com)
- \* Correspondence: [ymwong@ustc.edu.cn](mailto:ymwong@ustc.edu.cn) (Y.W); Tel.: +86-551-6257-8537

### S1. Scanning electron microscopy- energy dispersive spectroscopy (SEM-EDS)

Membrane morphology was characterized by using scanning electron microscopy (XT30ESEM-TM-PHILIP), and the distribution of the elements was analyzed with energy dispersive spectroscopy (EDS).



**Figure S1.** The SEM-EDS images of the fouled membranes: (a) and (e), CEM, Concentrate side; (b) and (f), CEM, Dilute side; (c) and (g), AEM, Concentrate side; (d) and (h), AEM, Dilute side)