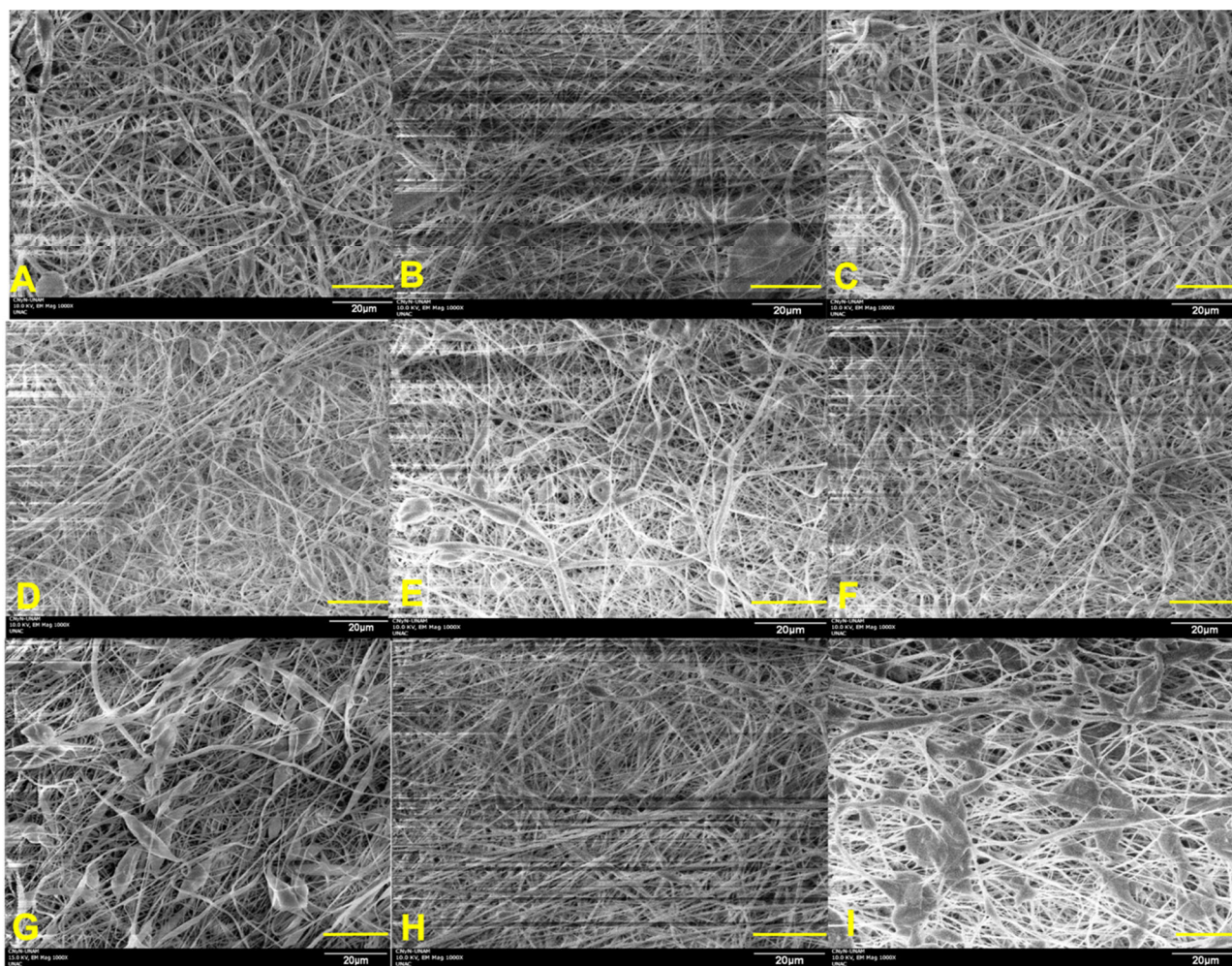


## Supplemental materials



**Figure S1.** PCL, PCL/Cs and PCL/Ns samples fibers. A) PCL, B) PCL/Glu, C) PCL/Fru, D) PCL/Lac, E) PCL/Gal, F) PCL/Pep, G) PCL/Gly, H) PCL/Yea, I) PCL/Ure. All micrographs were taken at 1000 x of amplification and 20  $\mu\text{m}$  of reference scale for measuring.