

Supplementary Materials

Bipolar Membrane Electrodialysis for Cleaner Production of Diprotic Malic Acid: Separation Mechanism and Performance Evaluation

Jinfeng He ^{1,†}, Rong Zhou ^{1,†}, Zhiguo Dong ¹, Junying Yan ², Xixi Ma ¹, Wenlong Liu ¹, Li Sun ^{1,3}, Chuanrun Li ^{1,3}, Haiyang Yan ^{1,3,*}, Yaoming Wang ² and Tongwen Xu ^{2,*}

¹ School of Pharmacy, Pharmaceutical Engineering Technology Research Center, Anhui University of Chinese Medicine, Hefei 230012, China

² Anhui Provincial Engineering Laboratory for Functional Membranes, Department of Applied Chemistry, School of Chemistry and Materials Science, University of Science and Technology of China, Hefei 230026, China

³ Anhui Province Key Laboratory of Pharmaceutical Preparation Technology and Application, Hefei 230012, China

* Correspondence: oceanyan@ustc.edu.cn (H.Y.); twxu@ustc.edu.cn (T.X.)

† These authors contributed equally to this work.

Citation: He, J.; Zhou, R.; Dong, Z.; Yan, J.; Ma, X.; Liu, W.; Sun, L.; Li, C.; Yan, H.; Wang, Y.; et al. Bipolar Membrane Electrodialysis for Cleaner Production of Diprotic Malic Acid: Separation Mechanism and Performance Evaluation. *Membranes* **2023**, *13*, 197. <https://doi.org/10.3390/membranes13020197>

Academic Editor: Seunghyeon Moon

Received: 5 January 2023

Revised: 19 January 2023

Accepted: 2 February 2023

Published: 5 February 2023



Copyright: © 2023 by the authors. Licensee MDPI, Basel, Switzerland. This article is an open access article distributed under the terms and conditions of the Creative Commons Attribution (CC BY) license (<https://creativecommons.org/licenses/by/4.0/>).

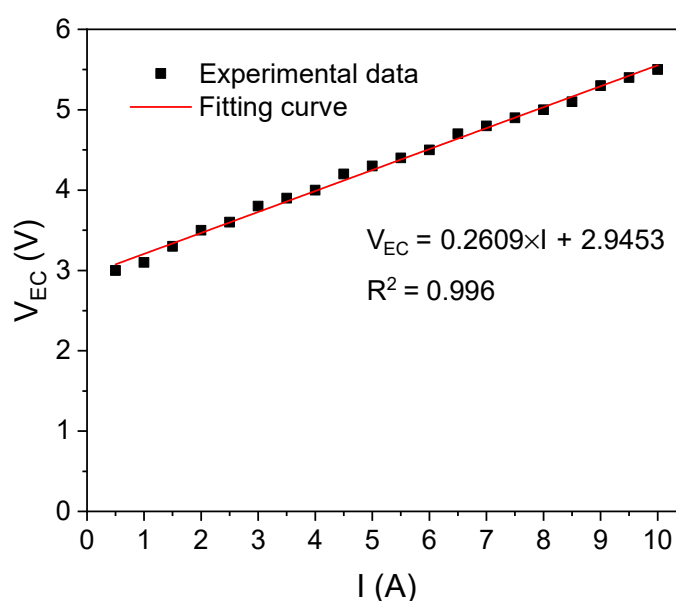


Figure S1. Voltage drops between the anode and cathode compartments (V_{EC}) as a function of current (I). Notes: The V_{EC} was measured in a stack that assembled only one piece of bipolar membrane, and the electrode rinse solution was 0.3 mol/L Na_2SO_4 .

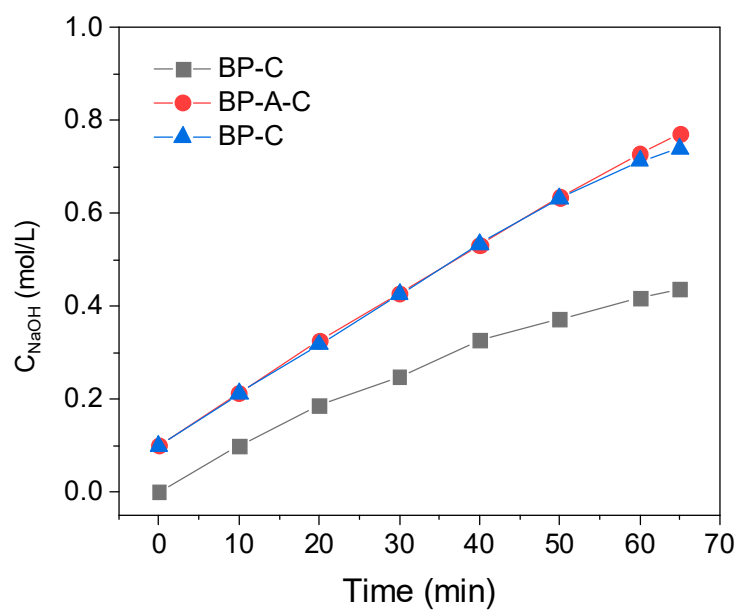


Figure S2. The concentration of NaOH in base compartment for different configurations as a function of time. Notes: current density, 20 mA/cm²; feed concentration, 0.5 mol/L.

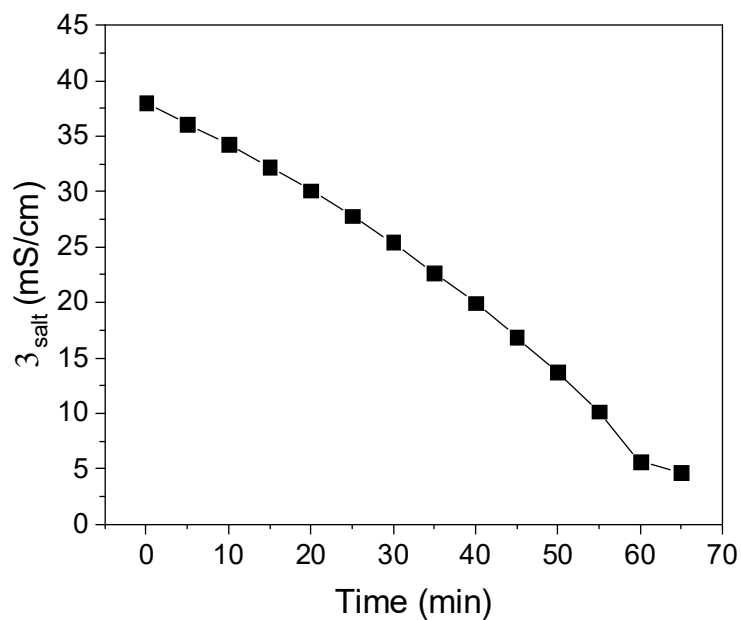


Figure S3. The conductivity of salt solution (σ_{salt}) using BP-A-C configuration as a function of time. Notes: current density, 20 mA/cm²; feed concentration, 0.5 mol/L.

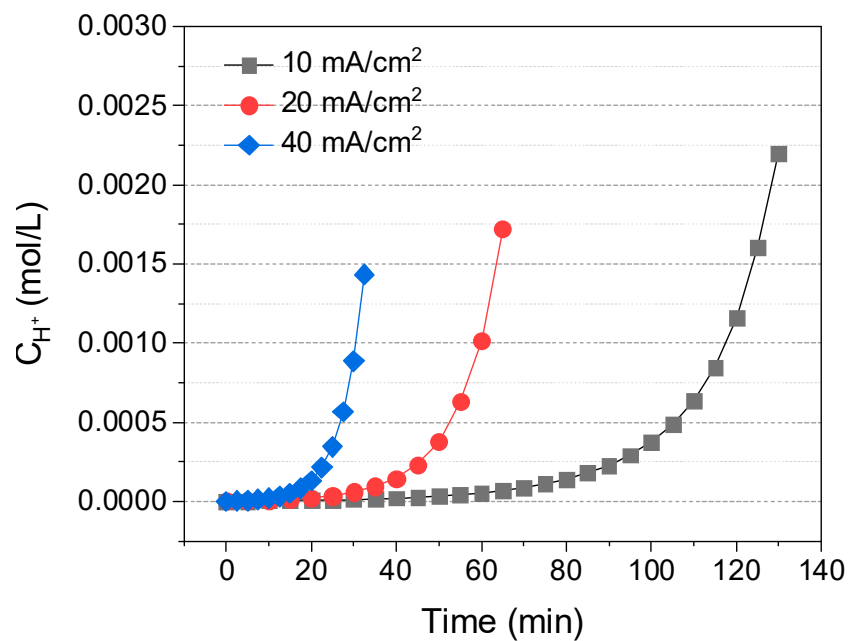


Figure S4. The concentration of H^+ in acid compartment at various current densities as a function of time. Notes: the concentration of H^+ was calculated from the solution pH; BP-C configuration; feed concentration, 0.5 mol/L.

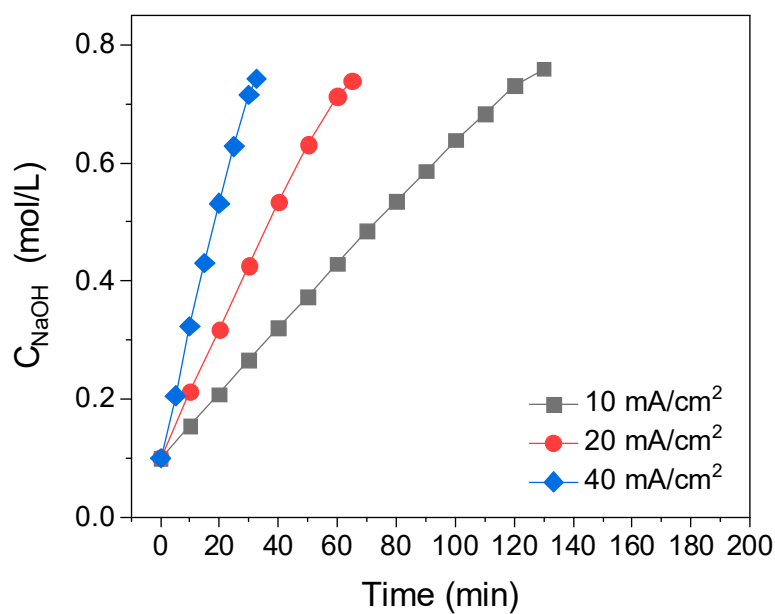


Figure S5. The concentration of NaOH in base compartment at various current densities as a function of time. Notes: BP-C configuration; feed concentration, 0.5 mol/L.

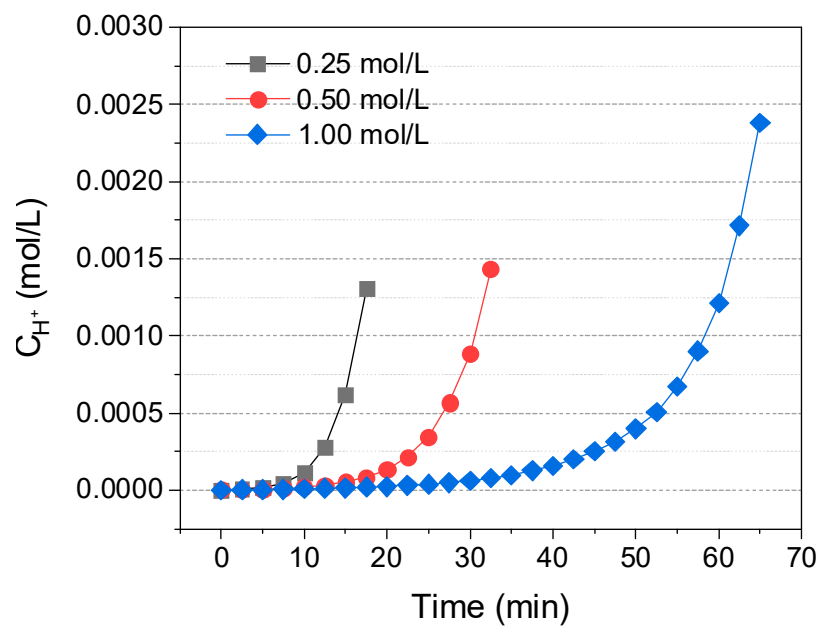


Figure S6. The concentration of H^+ in acid compartment at various feed concentrations as a function of time. Notes: the concentration of H^+ was calculated from the solution pH; BP-C configuration; current density, 40 mA/cm².

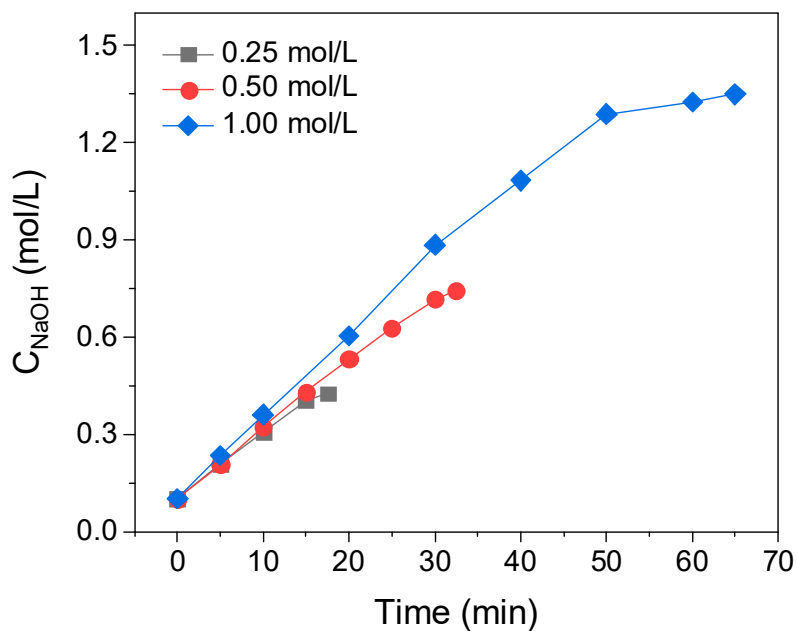


Figure S7. The concentration of NaOH in base compartment at various feed concentrations as a function of time. Notes: BP-C configuration; current density, 40 mA/cm².