

Chitosan–sEPDM and Melatonin–Chitosan–sEPDM composite membranes for melatonin transport and release

Florentina Mihaela Păncescu ¹, Abbas Abdul Kadhim Klaif Rikabi ^{1,2}, Ovidiu Cristian Oprea ³, Alexandra Raluca Grosu ¹, Aurelia Cristina Nechifor ¹, Vlad-Alexandru Grosu ^{4,*}, Szidonia-Katalin Tanczos ⁵, Florina Dumitru ³, Gheorghe Nechifor ^{1,*} and Simona Gabriela Bungău ⁶

- ¹ Analytical Chemistry and Environmental Engineering Department, University Politehnica of Bucharest, Bucharest 011061, Romania; florynicorici@yahoo.com (F.M.P.); dr.abbas.rikabi@atu.edu.iq (A.A.K.K.R.); andra.grosu@upb.ro (A.R.G.); aureliacristinanechifor@gmail.com (A.C.N.); ghnechifor@gmail.com (G.N.)
 - ² Al-Mussaib Technical College/Al-Furat Al-Awsat Technical University (ATU), Babylon - Najaf Street, Kufa 54003, Iraq; dr.abbas.rikabi@atu.edu.iq; (A.A.K.K.R.)
 - ³ Department of Inorganic Chemistry, Physical Chemistry and Electrochemistry, University Politehnica of Bucharest, Bucharest 011061, Romania; ovidiu.oprea@upb.ro (O.C.O.); d_florina@yahoo.com (F.D.)
 - ⁴ Department of Electronic Technology and Reliability, Faculty of Electronics, Telecommunications and Information Technology, University Politehnica of Bucharest, Bucharest 061071, Romania; vlad.grosu@upb.ro (V.-A.G)
 - ⁵ Department of Bioengineering, University Sapientia of Miercurea-Ciuc, Miercurea-Ciuc 500104, Romania; tczsidonia@yahoo.com (S.-K.T.)
 - ⁶ Department of Pharmacy, Faculty of Medicine and Pharmacy, University of Oradea, Oradea 410028, Romania; sbungau@uoradea.ro (S.G.B.)
- * Corresponding authors: vlad.grosu@upb.ro (V.-A.G); ghnechifor@gmail.com (G.N.)

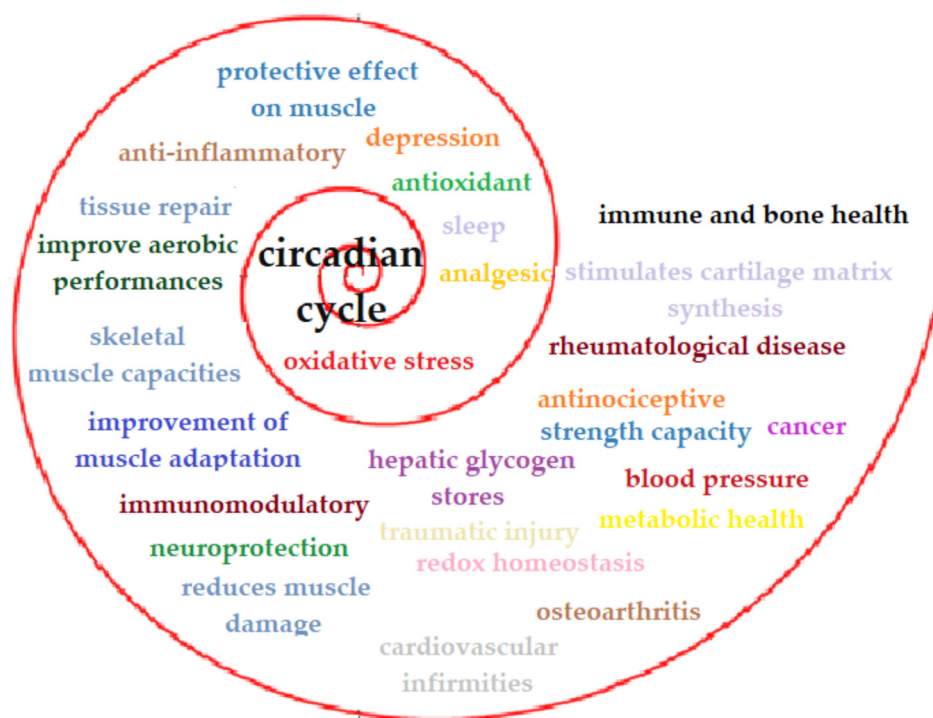
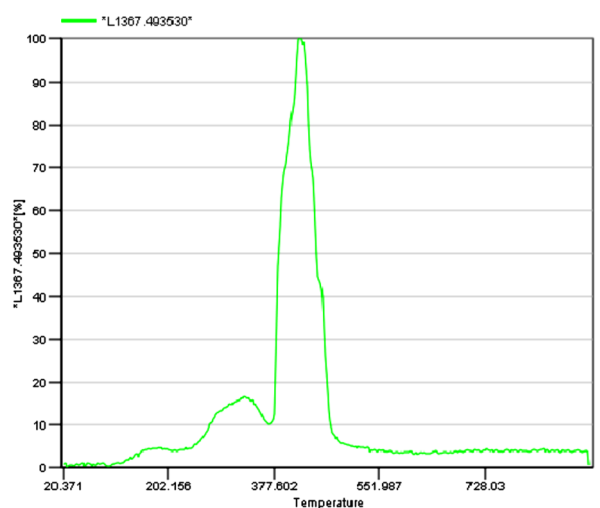
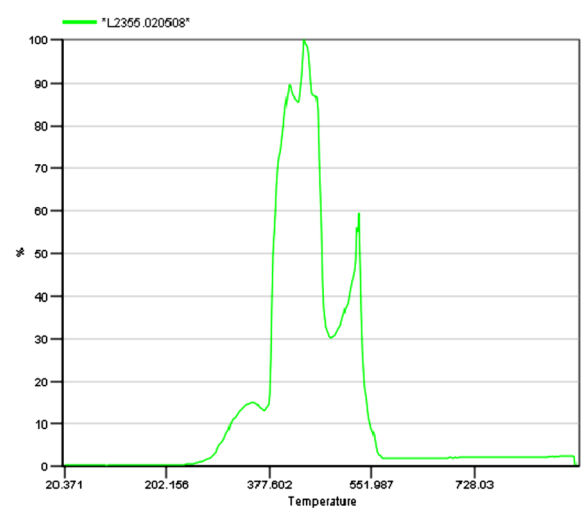


Figure S1. Schematic presentation of the melatonin biomedical implication.

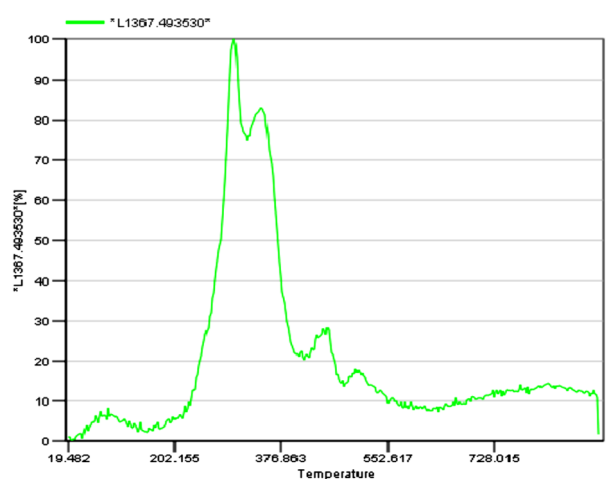


(a)

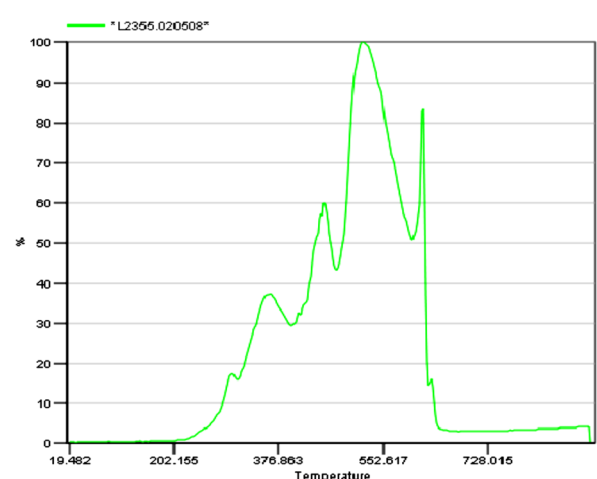


(b)

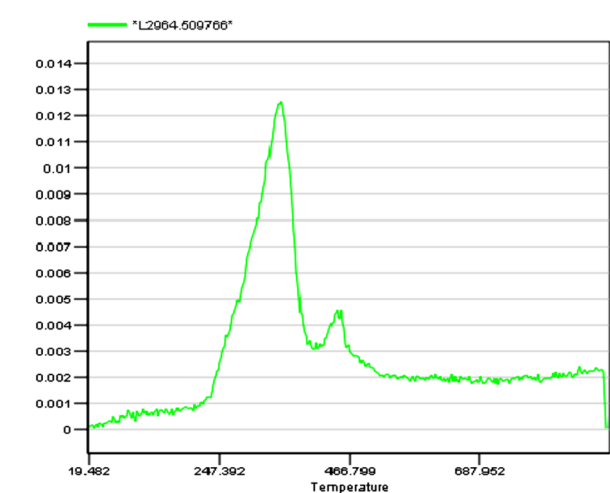
Figure S2. Trace for evolving SO₂ (1367 cm⁻¹) vs temperature (a); and trace for evolving CO₂ (2355 cm⁻¹) vs temperature (b).



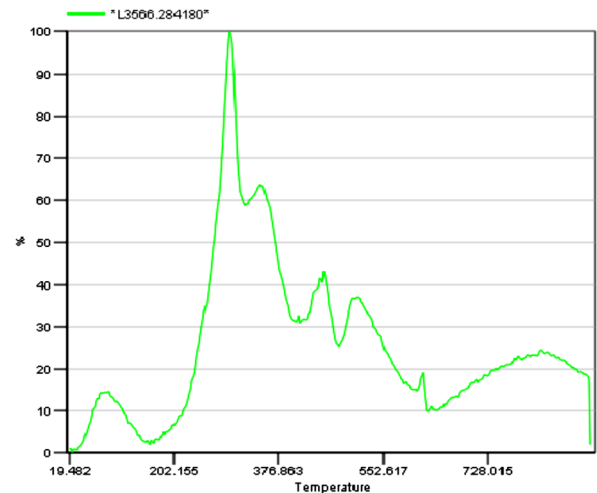
(a)



(b)

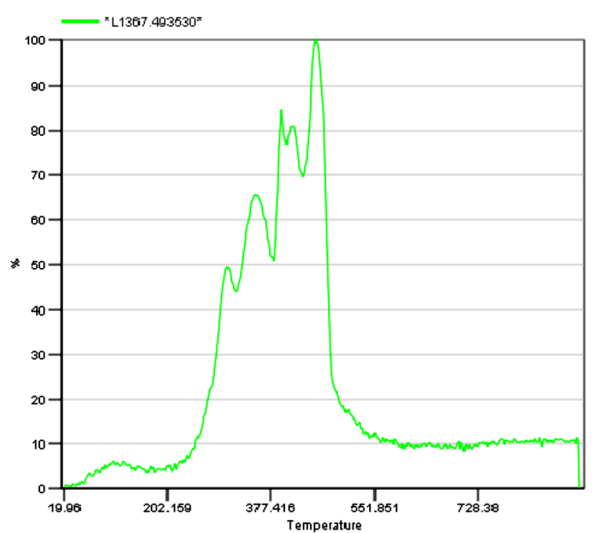


(c)

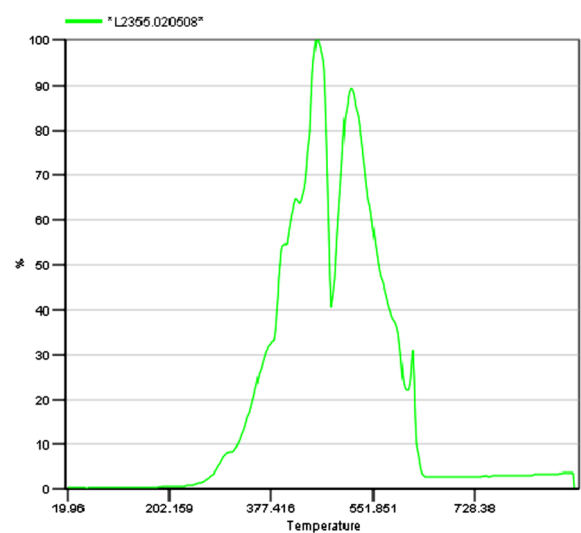


(d)

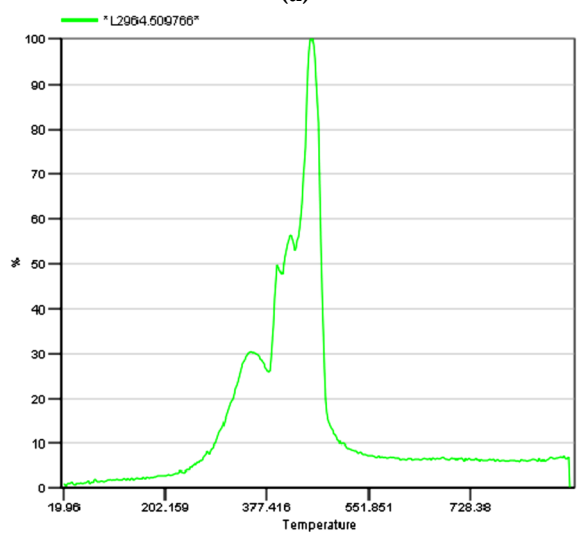
Figure S3. Trace for evolving (a) SO₂ (1367 cm⁻¹); (b) CO₂ (2355 cm⁻¹); (c) hydrocarbons (2964 cm⁻¹); and (d) H₂O (3566 cm⁻¹) vs temperature.



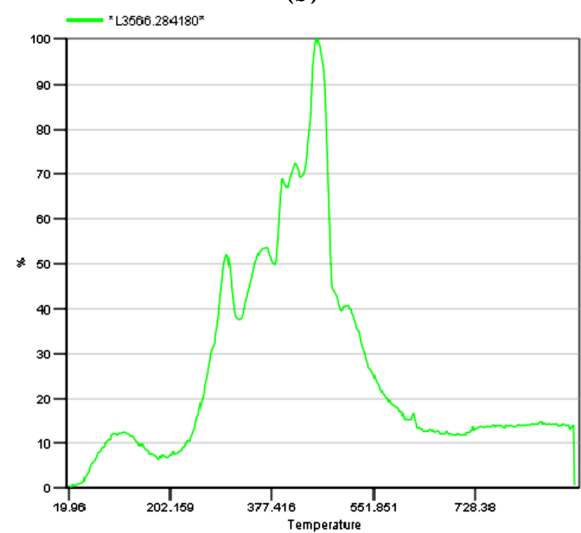
(a)



(b)



(c)



(d)

Figure S4. Trace for evolving (a) SO₂ (1367 cm⁻¹); (b) CO₂ (2355 cm⁻¹); (c) hydrocarbons (2964 cm⁻¹); and (d) H₂O (3566 cm⁻¹) vs temperature.