

Supplementary Material

Proton Conducting Organic-Inorganic Composite Membranes for All-Vanadium Redox Flow Battery

Sooraj Sreenath ^{1,2}, Nayanthara P. Sreelatha ¹, Chetan M. Pawar ^{1,2}, Vidhiben Dave ^{1,2}, Bhavana Bhatt ¹, Nitin G. Borle ¹ and Rajaram Krishna Nagarale ^{1,2,*}

¹ Electro Membrane Processes Laboratory, Membrane Science and Separation Technology Division, CSIR-Central Salt and Marine Chemicals Research Institute, Bhavnagar 364002, India; sooraj4993@gmail.com (S.S.); nayantharabiju2015@gmail.com (N.P.S.); chetanpawar085@gmail.com (C.M.P.); vidhidave009@gmail.com (V.D.); bhavanabhatt26@gmail.com (B.B.); nitinborle34@gmail.com (N.G.B.)

² Academy of Scientific and Innovative Research (AcSIR), Ghaziabad 201002, India

* Correspondence: rknagarale@csmcri.res.in

Supplementary Figures and Table

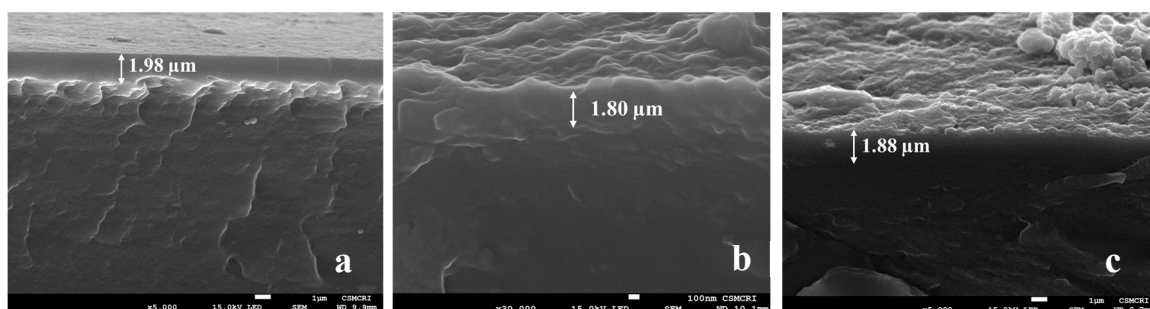


Figure S1. a-c, Cross-sectional SEM images of the membranes. PVA-SiO₂-Si, b. PVA-SiO₂-Zr and c. PVA-SiO₂-Sn.

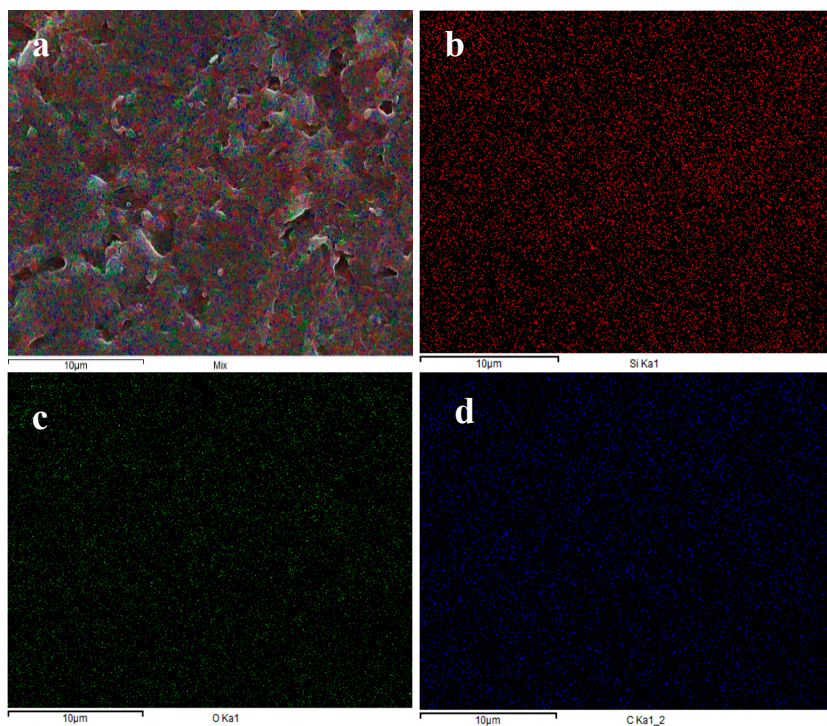


Figure S2: a. SEM image of PVA-SiO₂-Si and b–d. corresponding elemental mapping of Silica, oxygen, and carbon of PVA-SiO₂-Si.

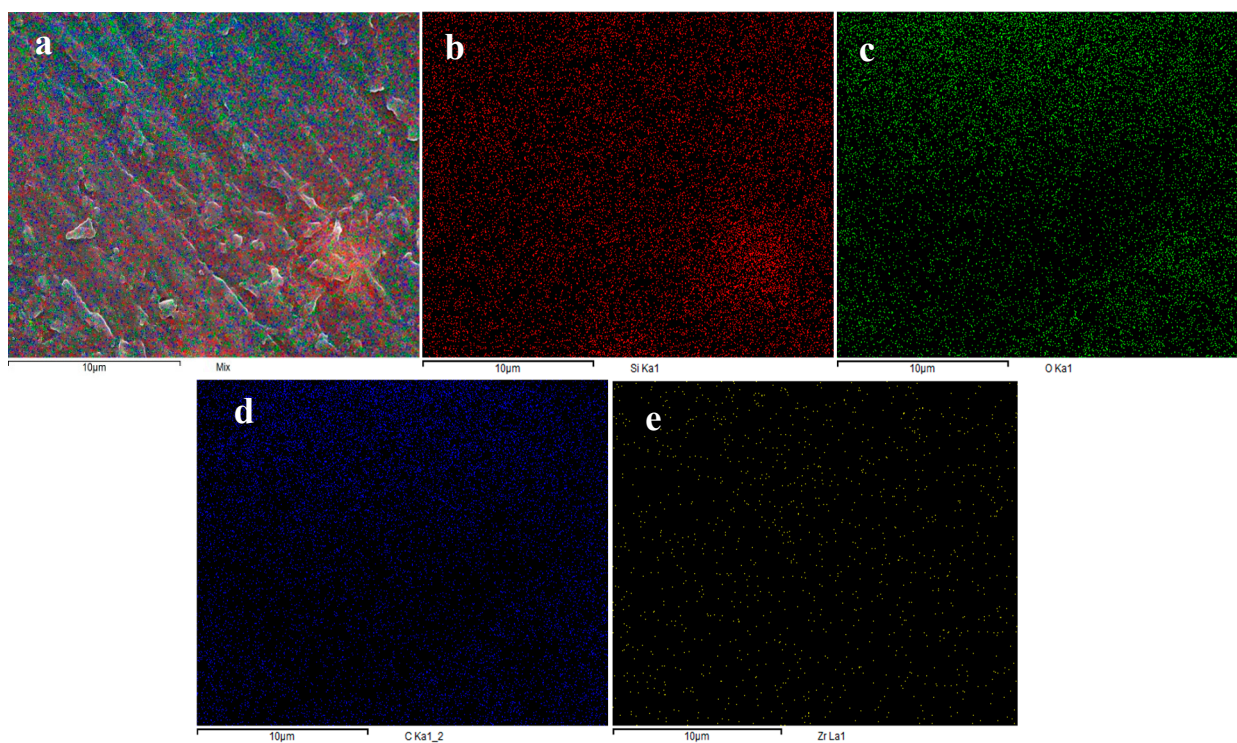


Figure S3: a. SEM image of PVA-SiO₂-Zr and b–e. corresponding elemental mapping of Silica, oxygen, carbon, and zirconium of PVA-SiO₂-Zr.

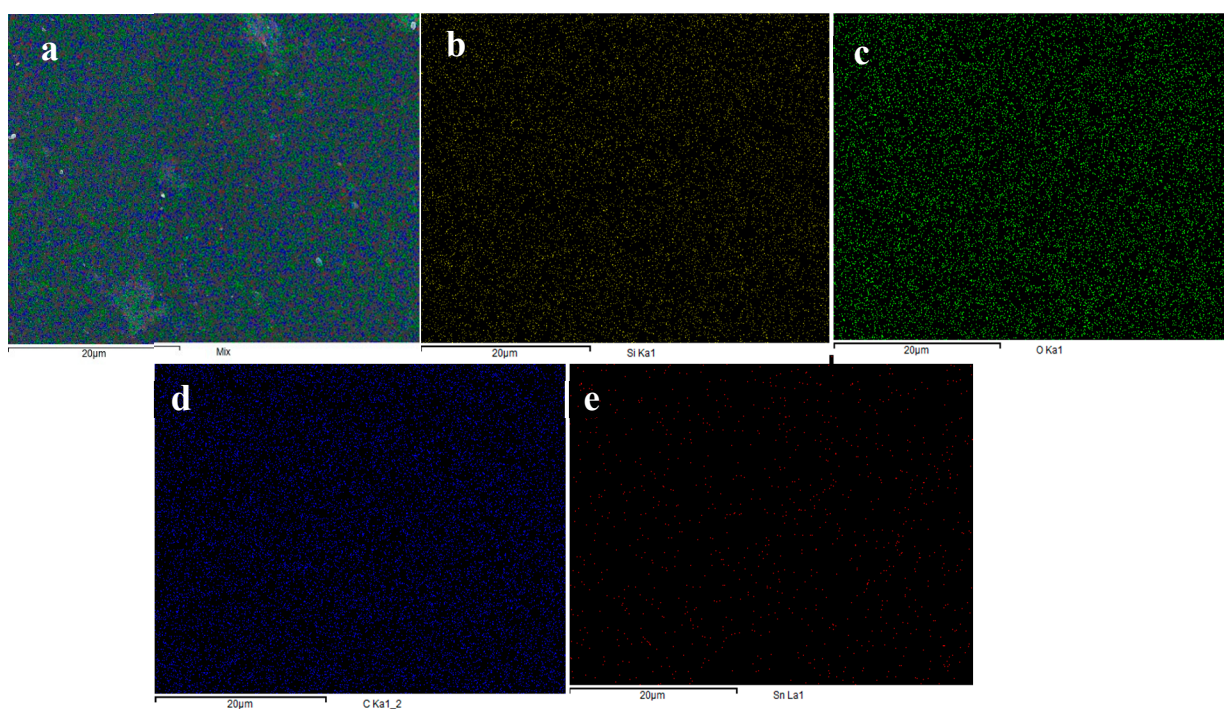


Figure S4: a. SEM image of PVA-SiO₂-Sn and b–e. corresponding elemental mapping of Silica, oxygen, carbon, and tin of PVA-SiO₂-Sn.

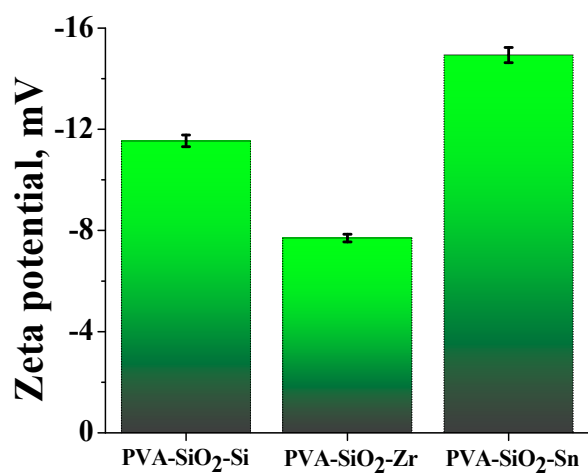


Figure S5. Zeta potential values of metal oxide coated PVA-SiO₂ membranes

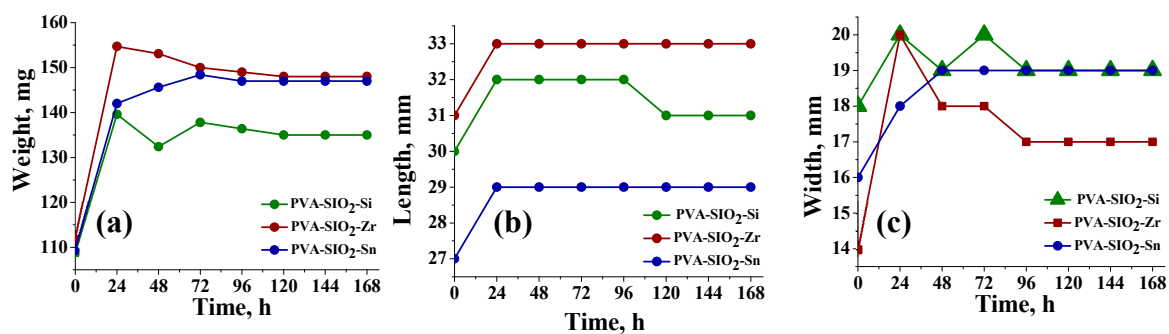


Figure S6: a. Weight; b. length and c. width of PVA-SiO₂-Si, PVA-SiO₂-Zr and PVA-SiO₂-Sn membranes as function of immersing time in 1.5 M VO₂⁺ dissolved in 2 M H₂SO₄ solutions.

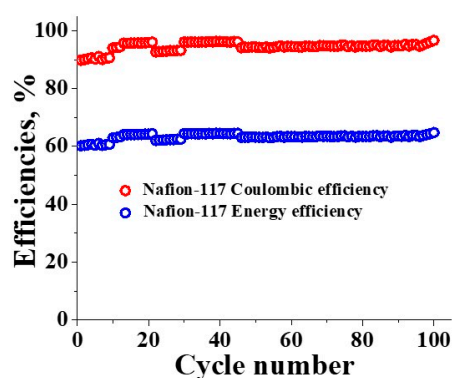


Figure S7. Cycling test of Nafion-117 at 100 mA cm⁻²

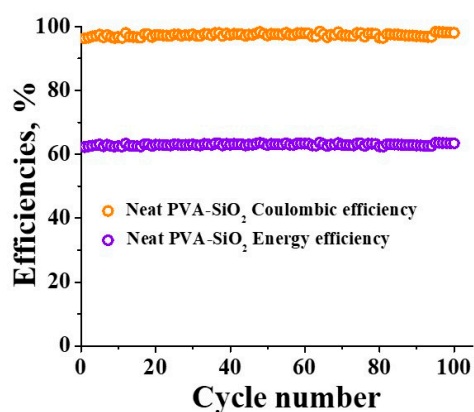


Figure S8. Cycling test of neat PVA-SiO₂ membrane at 100 mA cm⁻²

Table S1: Comparison of through-plane conductivity and sulfuric acid (2 M) uptake values of the metal oxide coated membranes before and after VRFB study.

Membranes code	Conductivity (mS cm ⁻¹)		Conductivity retention after VRFB (%)	2 M sulfuric acid uptake (%)		Water uptake retention after VRFB (%)
	Before VRFB	After VRFB		Before VRFB	After VRFB	
PVA-SiO ₂ -Si	15.00	12.90	86.00	95.0	87.0	91.57
PVA-SiO ₂ -Zr	12.28	9.95	81.02	86.0	80.0	93.02
PVA-SiO ₂ -Sn	20.27	18.94	93.43	89.0	87.0	97.75