

Supporting information

Fabrication of PCL/CMARX/GO Composite Nanofibrous Mats for Dye Adsorption: Wastewater Treatment

Mona Saad Binkadem *

Department of Chemistry, college of science, University of Jeddah, P.O. Box 80327,
Jeddah 21589, Saudi Arabia.

* Correspondence: 04100507@uj.edu.sa

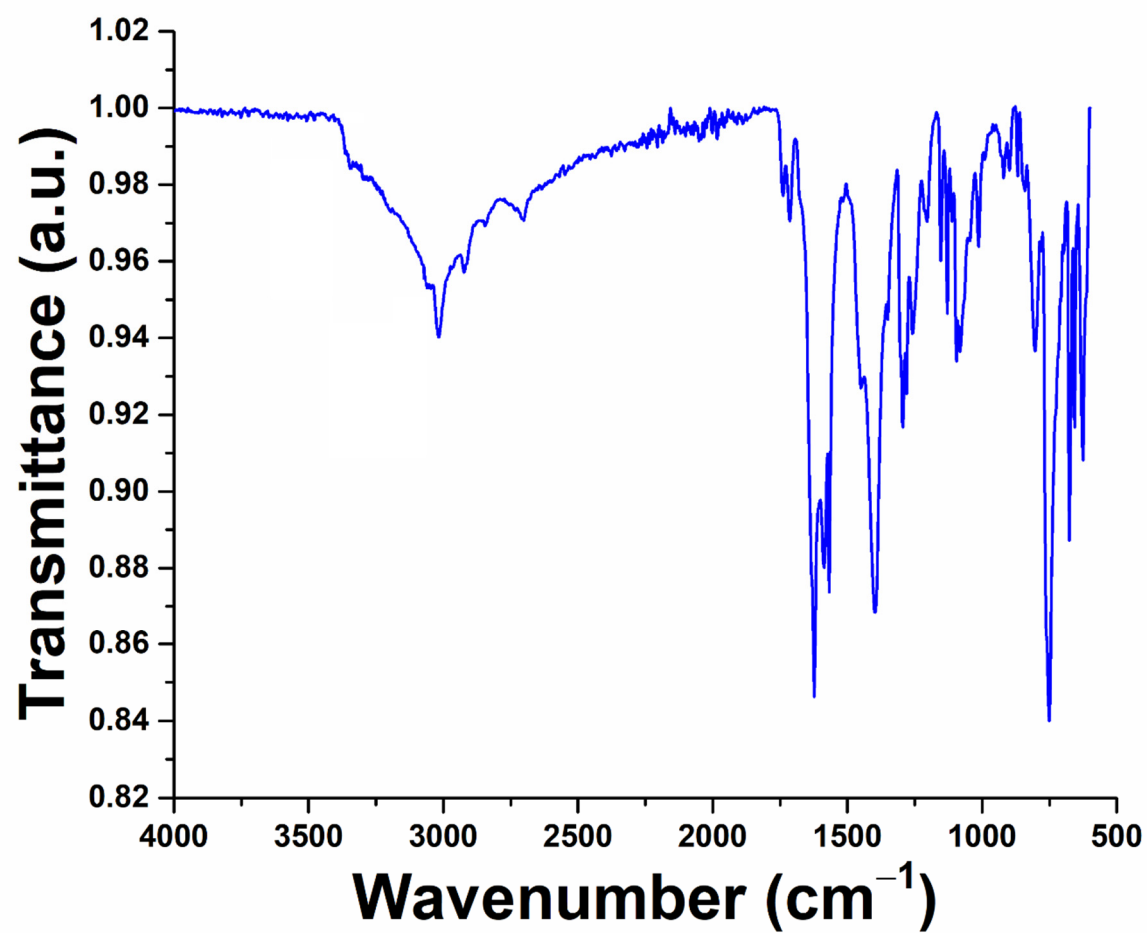


Figure S1. FTIR spectrum of PLA.

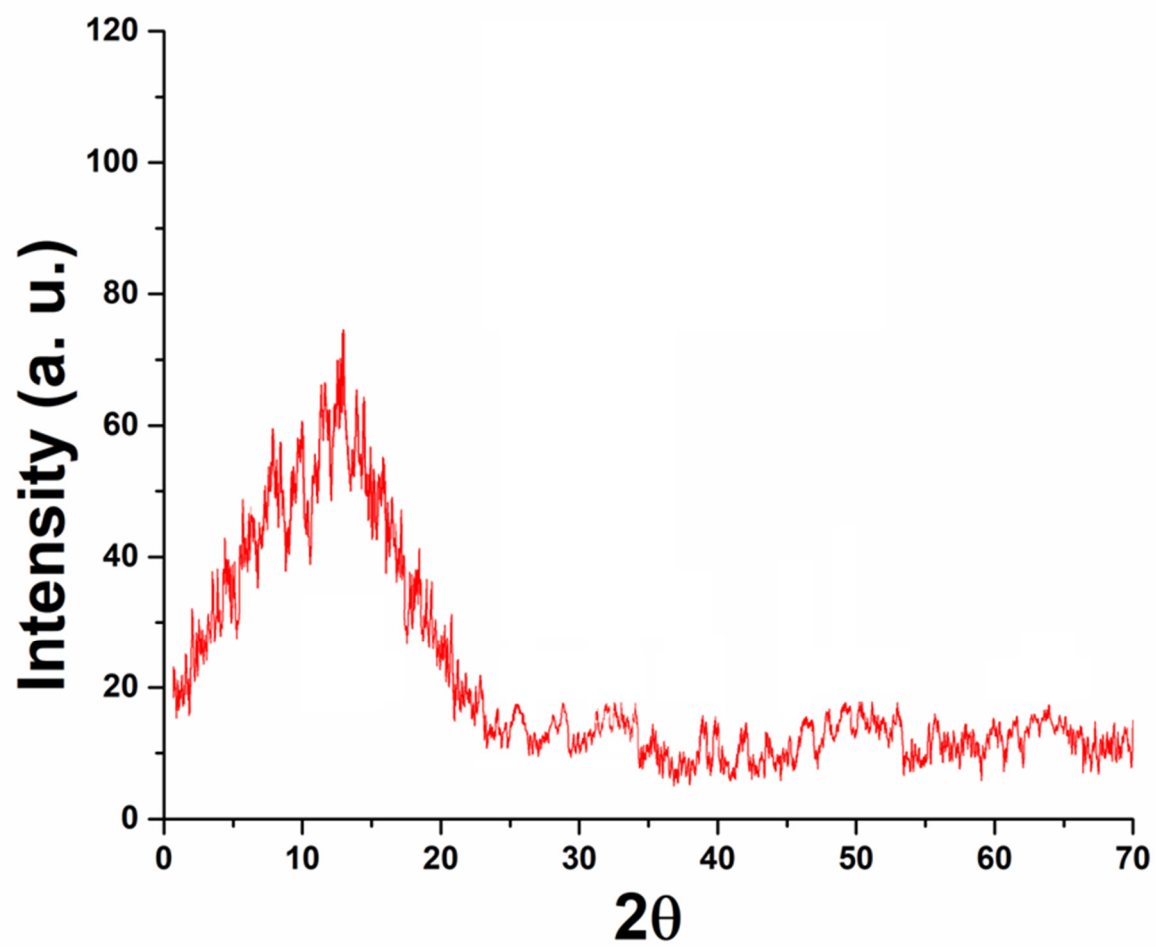


Figure S2. XRD spectrum of PCG.

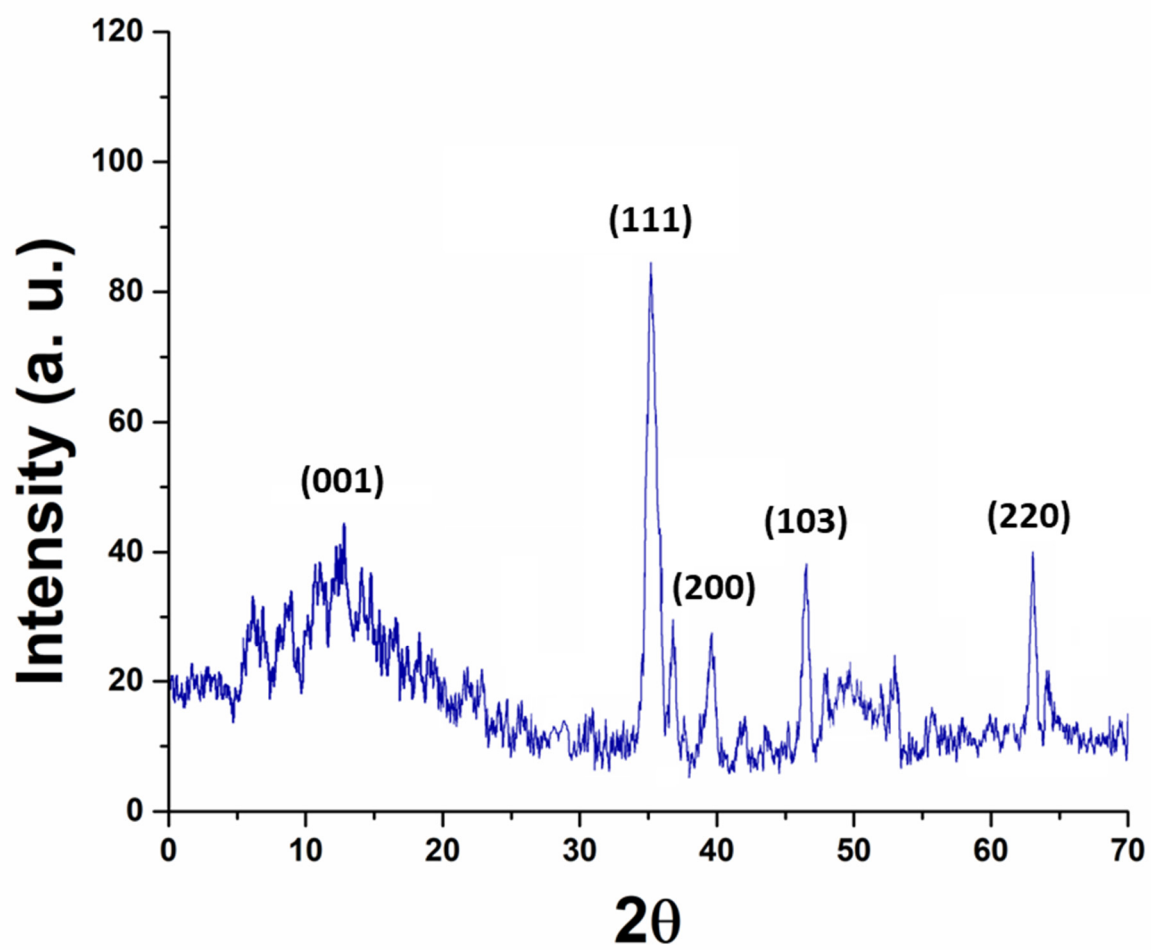


Figure S3. XRD spectrum of PCG@Ag.

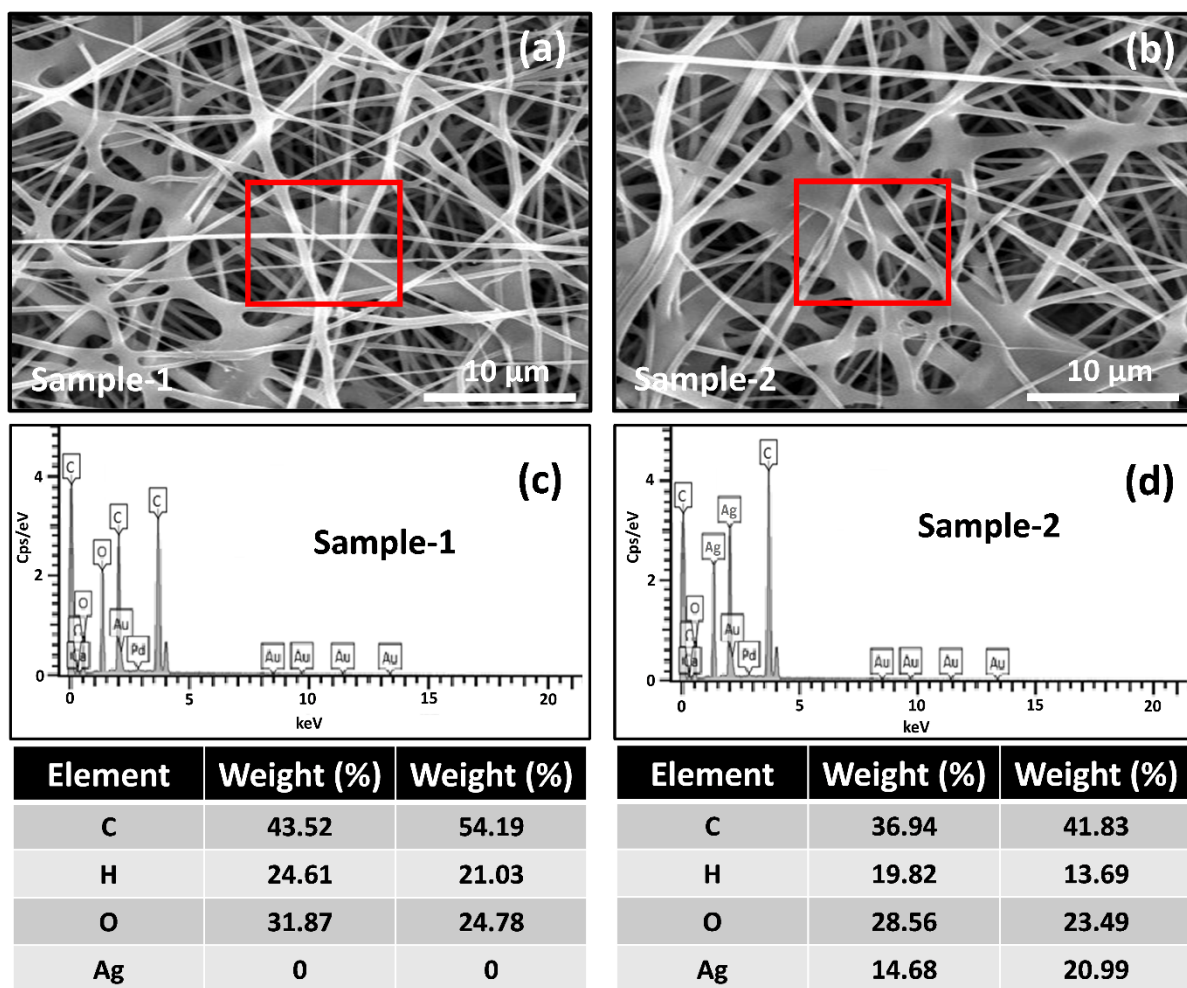


Figure S4. Surface morphologies and elemental analysis of the nanofibrous membranes (sample-1 and sample-2) by single electron microscope (SEM) and Energy Dispersive X-ray (EDX) microanalysis. (a and b) SEM analysis of sample-1 and sample-2 at 10 μm . (c and d) EDX analysis of sample-1 and sample-2 alongwith their elemental profile.