

Supplementary Material

Figure S1: Repartition of Banff diagnoses in the Protocol Kidney Biopsy (PKB)

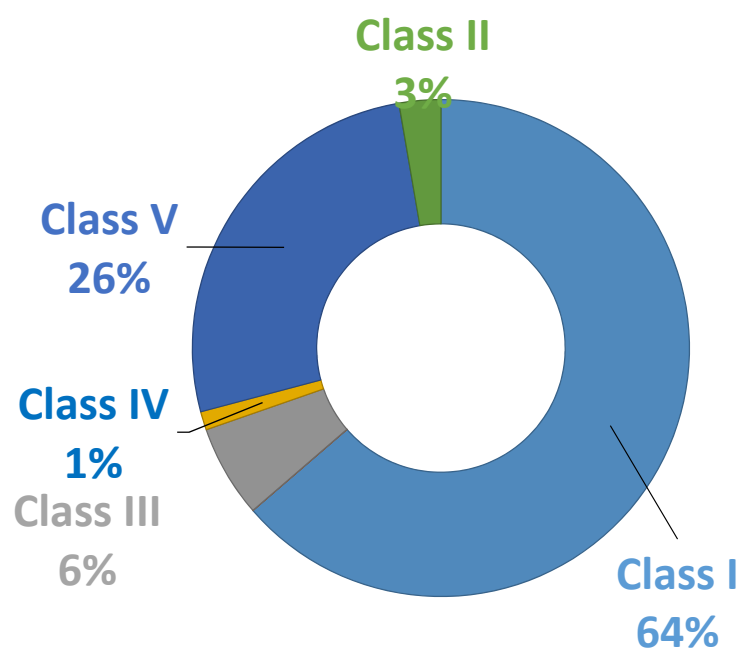


Figure S2: Graft survival with respect to ci and ct lesions. The total number of available biopsies for this evaluation is n=312 among the 333 patients with an available biopsy, due to a lack of precise ci and/or ct scores descriptions.

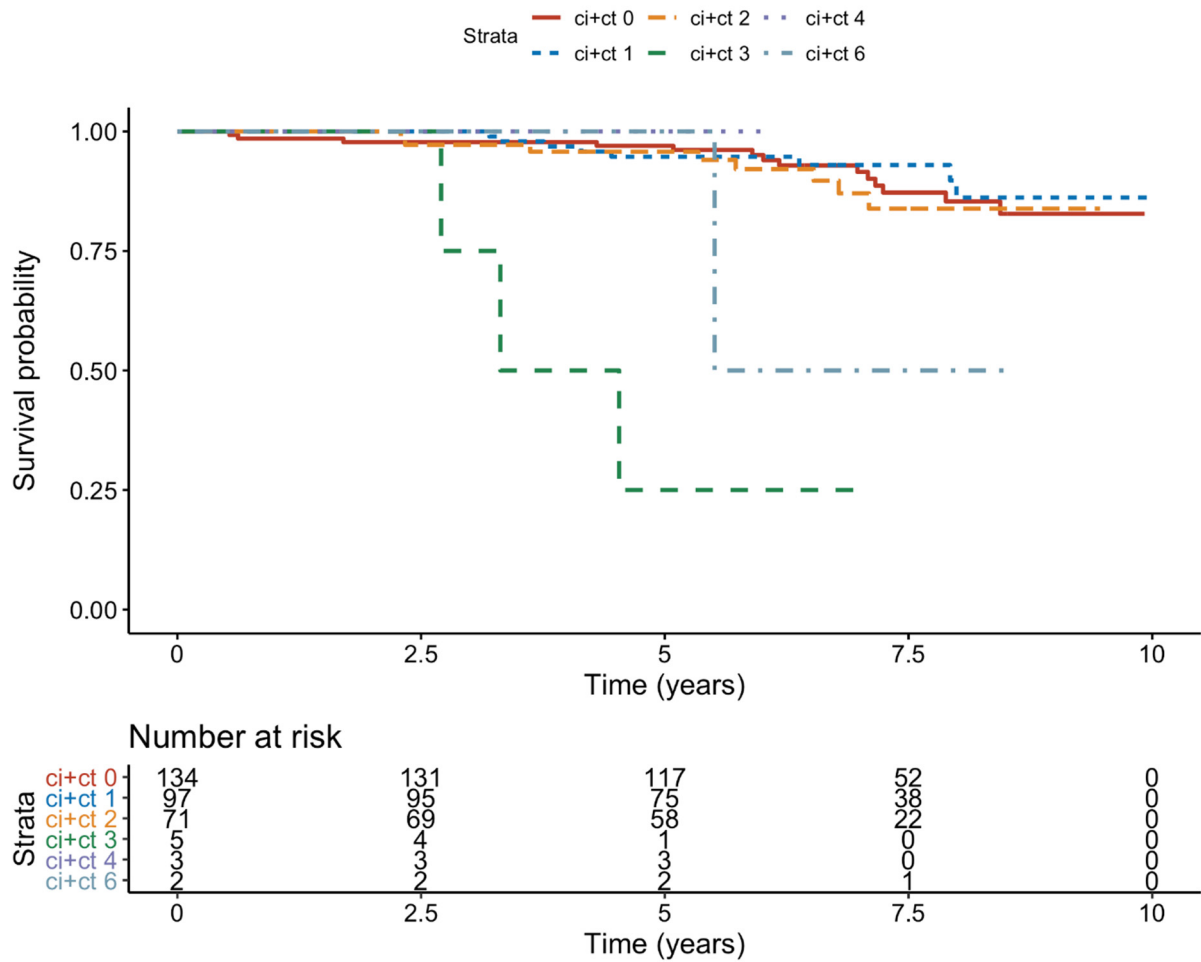


Figure S3: Graft survival with respect to cv lesions. The total number of available biopsies for this evaluation is n=312 among the 333 patients with an available biopsy, due to a lack of precise cv score descriptions.

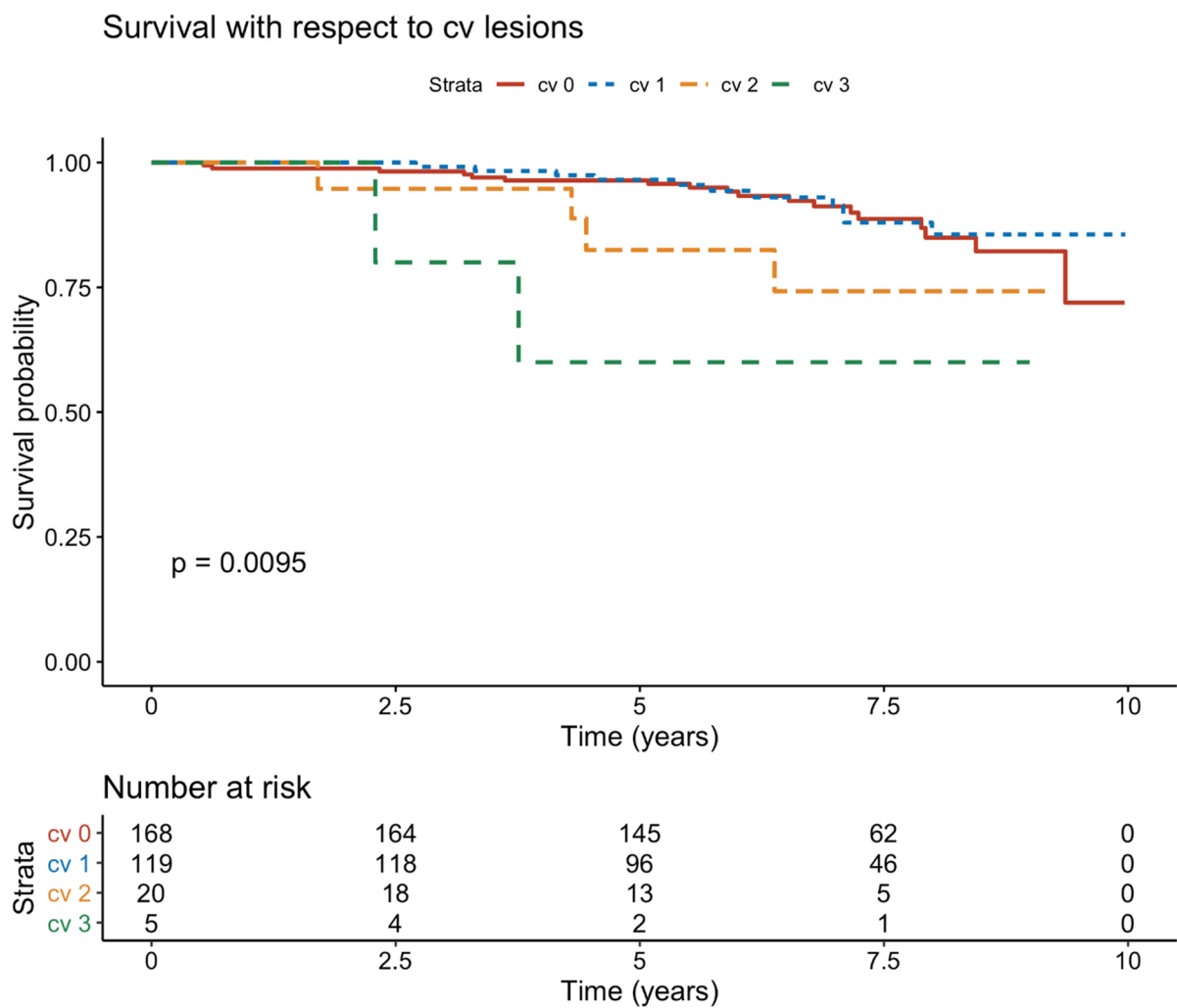


Figure S4: Graft survival for the 2009 cohort (biopsy: yes/no, PS >0.75)

