



Article

Multistate Modeling of COVID-19 Patients Using a Large Multicentric Prospective Cohort of Critically Ill Patients

Moreno Ursino ^{1,2} , Claire Dupuis ^{3,4}, Nicolò Buetti ^{4,*}, Etienne de Montmollin ^{4,5}, Lila Bouadma ^{4,5}, Dany Golgran-Toledano ⁶, Stéphane Ruckly ^{4,7}, Mathilde Neuville ⁸, Yves Cohen ^{9,10,11}, Bruno Mourvillier ¹², Bertrand Souweine ³ , Marc Gainnier ¹³, Virginie Laurent ¹⁴, Nicolas Terzi ^{15,16} , Shidasp Siami ¹⁷, Jean Reignier ¹⁸ , Corinne Alberti ^{1,19} and Jean-François Timsit ^{4,5} for the OUTCOMEREA Study Group [†]

- ¹ F-CRIN PARTNERS Platform, AP-HP, Université de Paris, Inserm, F-75010 Paris, France; moreno.ursino@inserm.fr (M.U.); corinne.alberti@inserm.fr (C.A.)
- ² INSERM, Centre de Recherche des Cordeliers, Sorbonne Université, USPC, Université de Paris, F-75006 Paris, France
- ³ Medical Intensive Care Unit, Gabriel Montpied University Hospital, 63000 Clermont-Ferrand, France; cdup83@gmail.com (C.D.); bsouweine@chu-clermontferrand.fr (B.S.)
- ⁴ Inserm U 1137, Université de Paris, Sorbonne Paris Cite, 75870 Paris, France; etienne.demontmollin@aphp.fr (E.d.M.); lila.bouadma@aphp.fr (L.B.); stephane.ruckly@gmail.com (S.R.); jean-francois.timsit@aphp.fr (J.-F.T.)
- ⁵ APHP, Medical and Infectious Diseases Intensive Care Unit, Bichat-Claude Bernard Hospital, 75018 Paris, France
- ⁶ Polyvalent ICU, Groupe Hospitalier Intercommunal Le Raincy Montfermeil, 93370 Montfermeil, France; daniele.goldgran-toledano@ght-gpne.fr
- ⁷ ICUREsearch, Statistical Department, 38160 Saint Marcellin, France
- ⁸ Polyvalent ICU, Hôpital Foch, 92150 Suresnes, France; m.neuville@hopital-foch.com
- ⁹ Intensive Care Unit, CHU Avicenne, Groupe Hospitalier Paris Seine Saint-Denis, AP-HP, 93000 Bobigny, France; yves.cohen@aphp.fr
- ¹⁰ UFR SMBH, Université Sorbonne Paris Nord, 93000 Bobigny, France
- ¹¹ INSERM, U942, F-75010, 75010 Paris, France
- ¹² Medical Intensive Care Unit, Robert Debré University Hospital, 51100 Reims, France; bmourvillier@chu-reims.fr
- ¹³ Service de Médecine Intensive Réanimation, La Timone 2 University Hospital, 13385 Marseille, France; marc.gainnier@ap-hm.fr
- ¹⁴ Medical-Surgical Intensive Care Unit, André Mignot Hospital, 78150 Le Chesnay, France; vlaurent@ch-versailles.fr
- ¹⁵ INSERM, U1042, Université Grenoble-Alpes, HP2, 38000 Grenoble, France; nterzi@chu-grenoble.fr
- ¹⁶ Médecine Intensive Réanimation, CHU Grenoble-Alpes, 38700 Grenoble, France
- ¹⁷ Polyvalent ICU, Centre Hospitalier Sud Essonne Dourdan-Etampes, 91410 Dourdan, France; shidasp.siami@ch-sudessonne.fr
- ¹⁸ Service de Médecine Intensive Réanimation, CHU de Nantes, 44000 Nantes, France; jean.reignier@chu-nantes.fr
- ¹⁹ Université de Paris, ECEVE, UMR 1123, Inserm, F-75010 Paris, France
- * Correspondence: niccolo.buetti@gmail.com; Tel.: +33-782-436-010
- [†] Group investigators@outcomerea.org. All members are cited in the Acknowledgement section.



Citation: Ursino, M.; Dupuis, C.; Buetti, N.; de Montmollin, E.; Bouadma, L.; Golgran-Toledano, D.; Ruckly, S.; Neuville, M.; Cohen, Y.; Mourvillier, B.; et al. Multistate Modeling of COVID-19 Patients Using a Large Multicentric Prospective Cohort of Critically Ill Patients. *J. Clin. Med.* **2021**, *10*, 544. <https://doi.org/10.3390/jcm10030544>

Academic Editor: Michael A. Froelich
Received: 12 December 2020
Accepted: 26 January 2021
Published: 2 February 2021

Publisher's Note: MDPI stays neutral with regard to jurisdictional claims in published maps and institutional affiliations.



Copyright: © 2021 by the authors. Licensee MDPI, Basel, Switzerland. This article is an open access article distributed under the terms and conditions of the Creative Commons Attribution (CC BY) license (<https://creativecommons.org/licenses/by/4.0/>).

Abstract: The mortality of COVID-19 patients in the intensive care unit (ICU) is influenced by their state at admission. We aimed to model COVID-19 acute respiratory distress syndrome state transitions from ICU admission to day 60 outcome and to evaluate possible prognostic factors. We analyzed a prospective French database that includes critically ill COVID-19 patients. A six-state multistate model was built and 17 transitions were analyzed either using a non-parametric approach or a Cox proportional hazard model. Corticosteroids and IL-antagonists (tocilizumab and anakinra) effects were evaluated using G-computation. We included 382 patients in the analysis: 243 patients were admitted to the ICU with non-invasive ventilation, 116 with invasive mechanical ventilation, and 23 with extracorporeal membrane oxygenation. The predicted 60-day mortality was 25.9% (95% CI: 21.8%–30.0%), 44.7% (95% CI: 48.8%–50.6%), and 59.2% (95% CI: 49.4%–69.0%) for a patient admitted in these three states, respectively. Corticosteroids decreased the risk of being invasively ventilated (hazard ratio (HR) 0.59, 95% CI: 0.39–0.90) and IL-antagonists increased the

probability of being successfully extubated (HR 1.8, 95% CI: 1.02–3.17). Antiviral drugs did not impact any transition. In conclusion, we observed that the day-60 outcome in COVID-19 patients is highly dependent on the first ventilation state upon ICU admission. Moreover, we illustrated that corticosteroid and IL-antagonists may influence the intubation duration.

Keywords: intensive unit care; acute respiratory distress disease; survival

1. Introduction

The coronavirus disease 2019 (COVID-19) epidemic has been causing health concerns worldwide since December 2019. By the end of September 2020, more than 30 million cases around the globe were reported [1]. Although some patients can be asymptomatic, in about 20% of inpatients, COVID-19 can lead to intensive care unit (ICU) admission [2]. COVID-19 acute respiratory distress syndrome (ARDS) progresses from hospital admission oxygen requirement to severe ARDS, requiring in several cases extracorporeal membrane oxygenation (ECMO), leading eventually to hospital discharge or death [3]. To date, factors influencing the clinical path of patients in the ICU are not fully elucidated and several trials are ongoing. For example, the impact of corticosteroids or tocilizumab on the need for mechanical ventilation and mortality in observational studies remains debated [4]. Our objective was to model COVID-ARDS patients' clinical path from intensive care unit admission to the day-60 outcome via a multistate model considering discharge state, death, need of non-invasive or invasive mechanical ventilation, and ECMO. Then, in an exploratory analysis, we looked for signal factors that could influence the transition from one state to another; subsequently, we evaluated the predicted impact of corticosteroid and tocilizumab/anakinra on the final outcome.

2. Experimental Section

2.1. Study Design and Data Source

We conducted a prospective observational study using data from a multicenter French database, OutcomeRea™. Data from 10 French ICUs on admission features and diagnosis, daily disease severity, iatrogenic events, nosocomial infections, vital state, and, since the COVID-19 pandemic, several specific clinical and biological data for COVID-19 patients, were prospectively recorded. Details on data collection and quality are described elsewhere [5]. The OutcomeRea™ database was declared to the "Commission Nationale de l'Informatique et des Libertés" (#999262), in accordance with French law, and this study was approved by the Institutional Review Board of Clermont-Ferrand. Informed consent was not necessary since the study did not modify patient management and data were anonymously processed.

2.2. Study Population

COVID-19 patients aged at least 18, with a laboratory-confirmed SARS-CoV-2 infection through a polymerase chain reaction (PCR) performed between 29 January 2020 and 28 May 2020, were considered for the current analysis. Patients with missing state at admission and hospital-acquired COVID-19 patients were excluded from the analysis. Patient life state was recorded daily. In addition, the following variables of ICU admission were recorded: age (year), body mass index (BMI, kg/m²), Charlson Comorbidity Index, simplified acute physiology score (SAPS II), number of days in the hospital before the ICU, number of days from the first symptom to the ICU, leucocytes (10⁹ per L), lymphocytes (10⁹ per L), C-reactive protein serum level (CRP, mg/L), sequential organ failure assessment (SOFA) score, and body temperature > 39 °C. Moreover, data on the following antimicrobials or immune-modulatory agents were routinely collected: corticosteroids, ritonavir/lopinavir, tocilizumab, anakinra, and hydroxychloroquine. The use of tocilizumab or anakinra was grouped in the same variable (i.e., IL-antagonists), due to

the low prevalence of single drug use in the ICU population. Patients were followed from ICU admission for a maximum of 60 days until death, discharge alive from hospital, or censoring. A patient was censored if he or she did not reach the maximum follow-up time, death, or hospital discharge, and in case of missing state during the follow-up; in this case, the patient was censored at the last available state.

2.3. Statistical Analysis

Categorical variables are reported as frequencies (percentages) and continuous variables as means (with SDs) or medians (with interquartile ranges (IQRs)), as appropriate. Continuous variables were categorized according to clinical meaning or by quartiles, as described in Table S1 of the Supplementary Material. Each category was coded as a nested variable, i.e., a dummy variable that takes the value of 1 if the variable is at least higher than the lowest cut-off of the category, and 0 otherwise. This coding was selected to better interpret the results after the variable selection technique, since more categories can collapse into a single one. Missing value imputations and details about which variable could not be tested are shown in the Supplementary Material.

We built a multistate model that described the individual path across various states in a continuous time (in days) setting [6,7]. The following six states were considered: (1) discharge alive from the hospital; (2) discharge alive from the ICU; (3) ICU non-invasive (i.e., ICU without mechanical ventilation: high-flow nasal oxygenation (HFNO) or continuous positive airway pressure (CPAP)); (4) ICU invasive, defined as in the ICU with invasive mechanical ventilation (barometric and positive end-expiratory pressure (PEEP) ≤ 10 or volumetric and PEEP > 10); (5) ECMO (i.e., in the ICU with ECMO); and (6) death (Figure 1). Patients could start in states 3, 4, or 5. States 1 and 6 were called absorbing states, since once the patient had entered one of them, he would not move anymore. Each day, each patient was associated with the worst state s/he encountered within that day. Seventeen possible transitions between states were modeled, using either the Nelson–Aalen estimator for the cumulative intensities (along with the associated standard errors) in the primary non-parametric analysis, or via a Cox proportional hazard model with the Breslow method for handling ties, robust variance, and transitions stratification, in an exploratory semi-parametric analysis to check possible covariate effect on transitions [8]. In this exploratory analysis, due to the small sample size available for each transition, we did not perform a formal causal inference; that is, methods such as inverse probability treatment weighting (IPTW) were not considered. Single variable analysis was first performed and covariates associated with a p -value lower or equal to 0.2 were retained for the multivariable analysis. No interaction was tested (small sample size issue) and, therefore, an additive drug effect was assumed. Covariates were added only to transitions with more than 10 events and when all covariate categories could be represented (details in Supplementary Material). A final parsimonious model was achieved using a stepwise backward–forward selection for the multivariate analysis using the BIC criterion [9]. The proportional hazards assumption was tested using the scaled Schoenfeld residuals. Due to the possible computation approximation instabilities for probabilities of state occupancy, estimated cumulative hazard functions were linearly interpolated in order to have values in a denser time space. The complete framework and formulas for probabilities of state occupancy are detailed in the Supplementary Material. A hazard ratio (HR) with a 95% confidence interval and the p -value were reported for the final model.

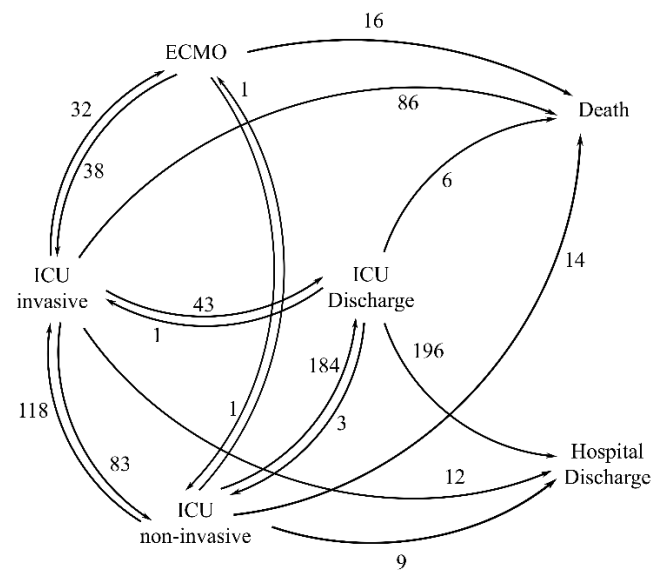


Figure 1. Multistate model representation. Each arrow corresponds to a possible transition ($n = 17$). The number of events associate with each transition is shown near to the corresponding arrow. ICU = intensive care unit, ICU non-invasive: in the ICU without mechanical ventilation; ICU invasive: in the ICU with mechanical ventilation, ECMO: extracorporeal membrane oxygenation.

The marginal effect of corticosteroids and IL-antagonists in the ICU population was predicted using a G-computation “approach.” The probabilities of state occupancy were computed for each ICU patient in the case of prescribed therapies at admission and in the counterfactual case of no therapy administered [10]. The average marginal population effect was then estimated in each of the four possible cases, i.e., corticosteroids and IL-antagonists given to the ICU population, only corticosteroids, only IL-antagonists, and neither corticosteroids nor IL-antagonists, along with the corresponding difference in state occupancy probabilities.

To compute confidence intervals for probabilities of state occupancy resulting from the exploratory analysis, a probabilistic sensitivity analysis was performed via a Monte Carlo approximation [11]. Maximum likelihood estimates by the Cox proportional hazard model were sampled from an asymptotic multivariate distribution, with the mean equal to the estimated parameters and the variance–covariance matrix given by the estimation process. One hundred Monte Carlo runs were performed, and confidence intervals were obtained using 0.025 and 0.975 percentiles. The mean sojourn time (i.e., the average length of stay at each state) was also computed.

R software (version 3.5), and SAS software (version 9.4) were used for the data analysis. The survival and mstate [12] R packages were used for the analytic statistics.

3. Results

From a population of 423 recorded COVID-19 patients in the OutcomeRea™ database, 35 patients were excluded since their state was missing at admission and six others were excluded since COVID-19 was hospital acquired. Thus, 382 patients were included in the final analysis (Table 1). Overall, 297 were male (77.7%) and their median age was 60.5 (52–70) years. The median duration from first symptoms to ICU admission was 10 (7–12) days, and the median number of days in the hospital before ICU admission was 2 (1–4) days. The patients’ characteristics and drugs administered at ICU admission are depicted in Table 1. The initial oxygenation state at ICU admission was non-invasive oxygenation for 243 (63.6%) patients, invasive ventilation for 116 (30.4%) patients, and ECMO for 23 (6.0%) patients. One hundred and twenty-five (32.7%) patients died before day 60.

Table 1. Characteristics in the ICU population ($n = 382$).

Variable	N = 382
Gender, male	297 (77.75%)
Age (year), median [Q1; Q3]	60.5 [52;70]
BMI > 30 kg/m ²	136 (35.60%)
SAPS II, median [Q1; Q3]	33 [25;44]
Charlson score > 0	234 (61.26%)
Number of days in hospital before ICU, median [Q1; Q3]	2 [1;4]
Number of days from first symptom to ICU, median [Q1; Q3]	10 [7;12]
SOFA median [Q1;Q3]	5 [4;8]
Minimum PaO ₂ /FiO ₂ ratio day 1–2, median [Q1; Q3]	105 [77;153.03]
Respiratory system compliance median [Q1; Q3] (invasively ventilated patients)	36.22 [26.61;49.03]
Leucocytes ($\times 10^9$ per L), median [Q1; Q3]	9000 [6600;12400]
CRP (mg/L), median [Q1; Q3]	158 [95.2;243]
Lymphocytes ($\times 10^9$ per L) median [Q1; Q3]	900 [600;1250]
Temperature > 39 °C	107 (28.01%)
Treatments at Day 1	
Corticosteroids	97 (25.39%)
Low dose (≤ 10 mg DXM or equivalent)	30 (7.85%)
High dose (20 mg DXM or equivalent)	67 (17.54%)
Ritonavir/lopinavir	130 (34.03%)
Tocilizumab	26 (6.81%)
Anakinra	24 (6.28%)
Hydroxychloroquine	39 (10.21%)
Heparin (therapeutic)	102 (26.70%)
State at ICU Admission	
Non-invasive (Optiflow, CPAP)	243 (63.61%)
Invasive (barometric, volumetric)	116 (30.37%)
ECMO	23 (6.02%)
Mortality Rate	
Overall day-60 mortality	125 (32.72%)

Legend: BMI: body mass index, SAPS: Simplified Acute Physiology Score, ICU: intensive care unit, SOFA: sequential organ failure assessment score, CRP: C-reactive protein level in serum, DXM: dexamethasone, CPAP: continuous positive airway pressure, PaO₂: arterial oxygen partial pressure, FiO₂: fractional inspired oxygen.

The stacked probabilities of state occupancy resulting from the non-parametric analysis are displayed in Figure 2. The predicted probability of being dead at day 60 was 25.9% (95% CI: 21.8–30.0%), 44.7% (95% CI: 48.8–50.6%), and 59.2% (95% CI: 49.4–69.0%) for a patient starting in ICU with non-invasive oxygenation, with invasive mechanical ventilation, and with ECMO, respectively. Regarding the whole ICU population, weighting mean and computing the standard deviation results according to proportion of entrance states, the predicted probability to be dead at day 60 was 33.6% (95% CI: 28.5–38.7%).

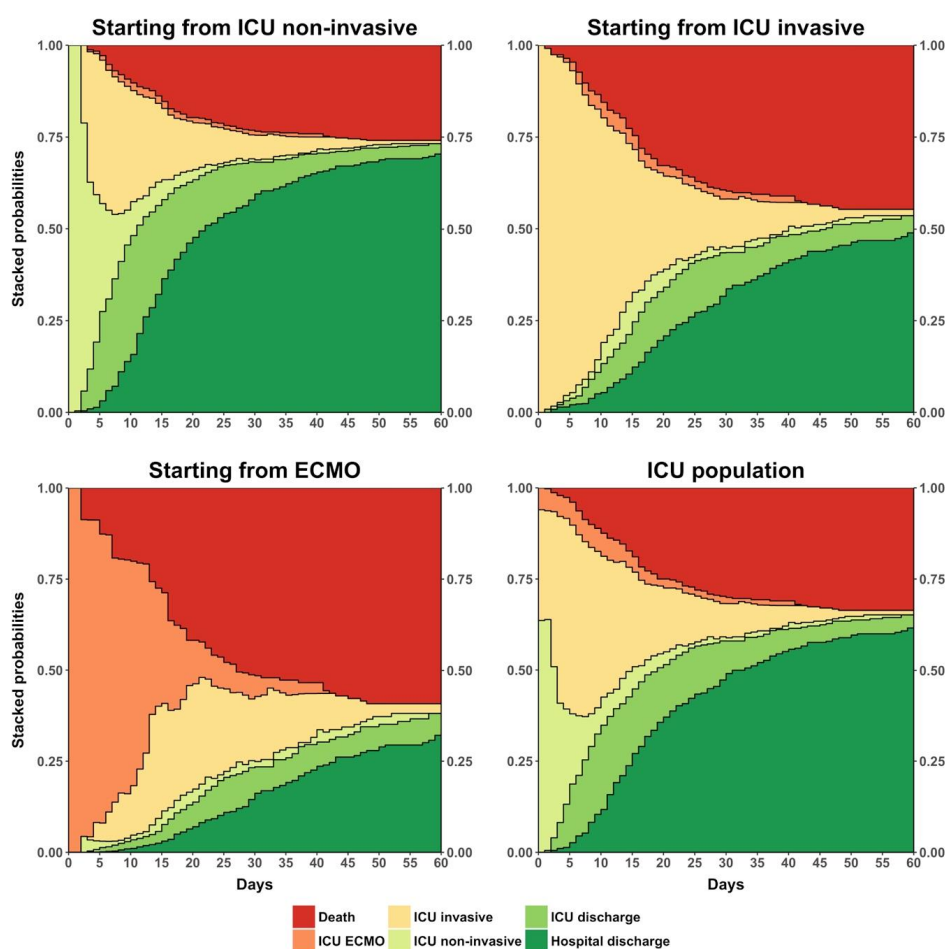


Figure 2. Stacked plots of predicted probability of state occupancy when starting from ICU non-invasive, ICU invasive, and ECMO, and in the total ICU population. Legend: ICU: intensive care unit. ICU non-invasive: in ICU without mechanical ventilation. ICU invasive: in ICU with mechanical ventilation. ECMO: extracorporeal membrane oxygenation.

Regarding the semi-parametric exploratory analysis, all results were reported in Table 2. No covariate was significantly associated with the transition from ICU invasive to hospital discharge or from ECMO to death. Briefly, age, sex, severity scores (i.e., SAPS II, SOFA, and Charlson score), inflammatory markers, and temperature were associated with several transitions. Interestingly, corticosteroids decreased the risk of being invasively ventilated (HR 0.59, 95% CI: 0.39–0.90) and IL-antagonists increased the probability of being successfully extubated (HR 1.8, 95% CI: 1.02–3.17).

Table 2. Results in term of univariable analysis and final multivariable model.

Variable	Transition Univariable Selection	Final Multivariable Model		
		Transition	Hazard Ratio (95% CI)	p-Value
Sex	16	None		
Age > 50	16	None		
Age > 60	6, 11, 12, 13, 14, 16, 17	13	0.14 (0.04, 0.48)	0.002
		14	1.55 (0.99, 2.41)	0.054
		16	9.84 (4.41, 21.97)	<0.001
Age > 70	9	9	7.5 (2.47, 22.76)	<0.001
BMI > 25	6, 7, 9	6	1.8 (1.22, 2.66)	0.003
BMI > 30	6, 13	6	0.67 (0.48, 0.93)	0.016

Table 2. Cont.

Variable	Transition Univariable Selection	Final Multivariable Model		
		Transition	Hazard Ratio (95% CI)	p-Value
SAPS II > 25	1, 6, 7, 10, 11, 12, 13, 16	1	0.66 (0.51, 0.85)	0.001
		6	0.58 (0.41, 0.82)	0.002
		7	1.66 (1.11, 2.47)	0.014
		13	5.86 (1.24, 27.64)	0.026
		16	0.23 (0.08, 0.61)	0.003
SAPS II > 33	7, 13	13	0.4 (0.16, 1.03)	0.058
SAPS II > 44	1, 9, 14	14	1.6 (1.06, 2.41)	0.025
Charlson > 0	1, 6, 10, 14	1	0.75 (0.59, 0.95)	0.017
		6	0.64 (0.49, 0.84)	0.001
		14	2.23 (1.34, 3.70)	0.002
Charlson > 2	9, 10	None		
Number of days in hospital before ICU > 2	6, 7, 11, 12, 14, 16, 17	None		
Number of days from first symptoms to ICU > 10	7, 16, 17	None		
SOFA > 4	7	7	2.39 (1.71, 3.35)	<0.001
SOFA > 5	1, 7, 17	None		
SOFA > 8	1, 11, 14, 17	11	0.19 (0.04, 0.78)	0.022
		14	1.84 (1.21, 2.81)	0.004
Leucocytes > 6000 ($\times 10^9$ per L)	12, 14, 17	None		
Leucocytes > 10,000 ($\times 10^9$ per L)	10, 14, 17	14	0.57 (0.36, 0.89)	0.014
CRP > 150	6, 12	12	0.53 (0.34, 0.81)	0.004
Lymphocytes > 1000 ($\times 10^9$ per L)	1, 6, 10, 12, 14	6	1.49 (1.13, 1.96)	0.005
Temperature > 39 °C	7	7	1.98 (1.41, 2.77)	<0.001
Corticosteroids	6, 7, 11, 14	7	0.59 (0.39, 0.90)	0.016
Ritonavir/lopinavir	1, 12	None		
Hydroxychloroquine	1, 12, 17	None		
Tocilizumab/anakinra	1, 11, 12	12	1.8 (1.02, 3.17)	0.043
Heparin (therapeutic)	6	6	0.58 (0.42, 0.81)	0.001

Legend: In the second column, the transitions in which each variable was selected as a risk factor (p -value < 0.2 in univariate analysis) are shown. Transition coding: (1) from ICU discharge to hospital discharge, (2) from ICU discharge to ICU non-invasive (no covariate tested), (3) from ICU discharge to ICU invasive (no covariate tested), (4) from ICU discharge to death (no covariate tested), (5) from ICU non-invasive to hospital discharge (no covariate tested), (6) from ICU non-invasive to ICU discharge, (7) from ICU non-invasive to ICU invasive, (8) from ICU non-invasive to ECMO (no covariate tested), (9) from ICU non-invasive to death, (10) from ICU invasive to hospital discharge, (11) from ICU invasive to ICU discharge, (12) from ICU invasive to ICU non-invasive, (13) from ICU invasive to ECMO, (14) from ICU invasive to death, (15) from ECMO to ICU non-invasive (no covariate tested), (16) from ECMO to ICU invasive, and (17) from ECMO to death. ICU: intensive care unit. ECMO: extracorporeal membrane oxygenation. ICU non-invasive: in ICU without mechanical ventilation. ICU invasive: in ICU with mechanical ventilation. BMI: body mass index. SAPS: Simplified Acute Physiology Score. SOFA: sequential organ failure assessment score. CRP: C-reactive protein.

Stacked probabilities of state occupancy resulting from the G-computation “approach” for corticosteroid and IL-antagonists are displayed in Figure S1 (Supplementary Material). The marginal difference in the probability of death at day 60 was 6.1% (95% CI: 1.8–10.1%), 2.8% (95% CI: 0.9–4.6%), and 3.7% (95% CI: 0.5–6.3%) for corticosteroids/IL-antagonists administered together, only corticosteroids, and only IL-antagonists, respectively, with respect to the cases without corticosteroid or IL-antagonist administration. The marginal predicted 60-day mortality probability was 27.3% (95% CI: 21.2–33.8%) and 33.4% (95% CI: 27.1–39.3%) when corticosteroids and IL-antagonists were administered and without their administration, respectively. When only corticosteroids were administered, the marginal probability of day-60 mortality was 30.6% (95% CI: 25–36.1%), whereas when only IL-antagonists were administered, it was 29.7% (95% CI 23.1–36.2%). The probability of state occupancy at days 10, 28, and 60 are displayed in Table 3 along with the mean sojourn time. Moreover, plots representing the probability of state occupancy along all follow-up with confidence intervals are shown in Figure S2.

Table 3. State occupancy probability and mean sojourn time resulting from the G-computation.

	With Corticosteroids and Tocilizumab/Anakinra		Without Corticosteroids and Tocilizumab/Anakinra		With Corticosteroids and without Tocilizumab/Anakinra		Without Corticosteroids and with Tocilizumab/Anakinra	
	State Occupation Probability (95% CI)	Mean Sojourn in Days (95% CI)	State Occupation Probability (95% CI)	Mean Sojourn in Days (95% CI)	State Occupation Probability (95% CI)	Mean Sojourn in Days (95% CI)	State Occupation Probability (95% CI)	Mean Sojourn in Days (95% CI)
Day 10								
Hospital discharge	13.6 (11, 17.4)	0.5 (0.1, 0.6)	12.3 (10.2, 15.7)	0.5 (0.4, 0.6)	13.5 (10.9, 17.2)	0.5 (0.4, 0.7)	12.4 (10.3, 15.8)	0.5 (0.4, 0.6)
ICU discharge	27 (21.8, 32.5)	1.4 (0.6, 1.8)	22.5 (19.2, 26.1)	1.2 (1, 1.5)	26.2 (21.4, 31.3)	1.4 (1.1, 1.7)	23.5 (19.8, 27.5)	1.2 (1, 1.6)
ICU non-invasive	11 (6.6, 15.2)	3.2 (2.7, 4.8)	7.8 (5, 10.7)	2.8 (2.4, 3.1)	9.4 (5.8, 13.5)	3.2 (2.7, 3.6)	9.7 (6.1, 13.5)	2.9 (2.5, 3.2)
ICU invasive	31.2 (22, 36.6)	3.8 (3.2, 4.3)	39.5 (31.6, 43.4)	4.5 (3.9, 4.8)	33.7 (25.3, 38.8)	3.9 (3.3, 4.4)	36.6 (27.8, 41.8)	4.4 (3.8, 4.8)
ECMO	5.7 (4.1, 11.1)	0.6 (0.5, 0.8)	6 (4.2, 12.2)	0.6 (0.5, 0.9)	5.7 (4.2, 11.2)	0.6 (0.5, 0.9)	5.9 (4.2, 12.1)	0.6 (0.5, 0.9)
Death	11.5 (9.1, 15.4)	0.5 (0.1, 0.7)	11.9 (9.6, 15.5)	0.5 (0.4, 0.7)	11.6 (9.2, 15.5)	0.5 (0.4, 0.7)	11.8 (9.6, 15.5)	0.5 (0.4, 0.7)
Day 28								
Hospital discharge	52.2 (44.3, 60.5)	7.3 (2.8, 8.6)	45 (39.4, 51.1)	6.4 (5.5, 7.6)	48.9 (42.5, 55.5)	7 (6, 8.3)	48.8 (41.8, 57.3)	6.8 (5.8, 8)
ICU discharge	13.5 (9.3, 18.4)	4.8 (3.8, 5.8)	11.6 (8.1, 15.8)	4 (3.4, 4.8)	11.8 (8.1, 16.2)	4.4 (3.7, 5.4)	13.5 (9.3, 18.4)	4.4 (3.6, 5.4)
ICU non-invasive	1.7 (0.7, 2.8)	4.2 (3.4, 7.1)	1.3 (0.7, 2.1)	3.5 (2.9, 4.1)	1.3 (0.7, 2.2)	3.9 (3.3, 4.7)	1.7 (0.7, 2.7)	3.9 (3.1, 4.6)
ICU invasive	6.5 (3.5, 10)	6.5 (5, 9.6)	11.3 (8, 14)	8.4 (7, 9.4)	9.6 (6.5, 12.2)	7.3 (5.7, 8.3)	7.8 (4.5, 12.3)	7.6 (6.1, 8.9)
ECMO	1.5 (0.4, 5.2)	1.1 (0.8, 2.2)	2 (0.6, 6.4)	1.2 (0.8, 2.4)	1.8 (0.6, 5.8)	1.1 (0.8, 2.3)	1.6 (0.5, 5.6)	1.1 (0.8, 2.3)
Death	24.6 (19.4, 30.4)	4 (1.9, 5.1)	28.8 (23.4, 34.1)	4.4 (3.6, 5.5)	26.6 (21.7, 31.7)	4.2 (3.4, 5.2)	26.6 (21.1, 32.2)	4.2 (3.4, 5.3)
Day 60								
Hospital discharge	68.4 (60.9, 75.1)	27.5 (17.1, 31.2)	60.9 (54.1, 67.3)	24.1 (21.1, 27)	64.2 (57.5, 69.9)	25.8 (22.8, 28.7)	65.7 (58.1, 73.4)	26 (22.6, 29.9)
ICU discharge	3.2 (1.6, 5.5)	6.7 (5.1, 9.8)	3.4 (1.8, 5.8)	5.9 (4.6, 7.6)	3.2 (1.7, 5.6)	6.3 (4.9, 8.1)	3.4 (1.7, 5.8)	6.4 (4.9, 8.3)
ICU non-invasive	0.3 (0.1, 0.6)	4.6 (3.7, 8.3)	0.3 (0.1, 0.6)	3.9 (3.2, 4.6)	0.3 (0.1, 0.6)	4.3 (3.5, 5.1)	0.3 (0.1, 0.6)	4.2 (3.3, 5)
ICU invasive	0.6 (0.2, 1.4)	7.4 (5.5, 13)	1.7 (1.1, 2.6)	10.1 (8.3, 11.4)	1.5 (1, 2.2)	8.7 (6.8, 10)	0.7 (0.2, 1.7)	8.6 (6.8, 10.6)
ECMO	0.2 (0, 1.7)	1.3 (0.8, 3.2)	0.3 (0, 2)	1.5 (0.9, 3.6)	0.3 (0, 1.8)	1.4 (0.9, 3.3)	0.2 (0, 1.8)	1.4 (0.8, 3.3)
Death	27.3 (21.2, 33.8)	12.5 (8.6, 15.4)	33.4 (27.1, 39.3)	14.6 (11.9, 17.4)	30.6 (25, 36.1)	13.5 (11.1, 16.2)	29.7 (23.1, 36.2)	13.4 (10.6, 16.4)

Legend. ICU: intensive care unit. ECMO: extracorporeal membrane oxygenation. ICU non-invasive: in ICU without mechanical ventilation. ICU invasive: in ICU with mechanical ventilation. CI: confidence interval. Mean sojourn time: mean number of days spent in each state.

4. Discussion

In a multicenter prospective cohort of ICU patients admitted during the first COVID-19 pandemic phase in France, using a multistate model, we found that the day-60 outcome is highly dependent on the first ventilation state upon ICU admission. The day-60 death rate estimate was 33.6%, varying from 25.9% in patients with non-invasive oxygenation on admission, 46.1% in patients under invasive mechanical ventilation on admission, and 60.3% in patients under ECMO. We found that transitions could be associated with well-known risk factors (i.e., age, Charlson score, SOFA score, inflammatory parameters). Moreover, corticosteroids seemed to decrease the risk of being invasively ventilated, and IL-antagonists to increase the chance of being successfully extubated. Using a G-computation approach, we also estimated the beneficial effect of corticosteroid and IL-antagonist therapy on day-60 mortality. The day-60 predicted estimate of mortality was 33.4% (95% CI: 27.1–39.3%) without immune-modulatory therapy and 27.3% (95% CI: 21.2–33.8) with the combination of corticosteroids and IL-antagonists.

Multistate models provide a reliable analysis of outcomes in severely ill patients and a clear visual presentation of the clinical path of COVID-19 patients [13]. This modeling approach also permits an understanding of possible influencing factors and in which part of the path they may intervene. Two recent meta-analyses revealed that approximately 28% and 30% of patients admitted to ICU with a severe form of COVID-19 died [14,15]. Our findings were in line with the results of these meta-analyses, with an estimated mortality of 33.6% in this specific setting. Moreover, our results were similar to a recent nationwide analysis from U.S. hospitals that illustrated that the variability in mortality was associated with various clinical state at ICU admission and several specific patient characteristics (e.g., age and sex) or severity of illness score (i.e., SOFA score [16]).

We used a new statistical approach based on high-quality collected data to provide further evidence of signals in favor of immune-modulating therapies in severely ill COVID-19 patients. First, corticosteroids appeared to reduce the probability of invasive mechanical ventilation. This is in line with two randomized control trials (RCTs) that investigated corticosteroids versus a placebo and showed a benefit of corticosteroids in patients regarding the probability of being intubated [17,18]. The effect on mortality of corticosteroids in COVID-19 patients remains an open issue. On one hand, a recent meta-analysis showed an advantage of corticosteroids on mortality [16]; the majority of the efficacy data on corticosteroids came from a large RCT in the UK in which dexamethasone reduced the 28-day mortality among hospitalized patients compared to the standard of care alone [19]. On the other hand, several RCTs and a large cohort showed a non-significant impact on mortality of corticosteroids [18,20,21].

Second, IL-antagonists given at ICU admission appeared to increase the probability of being successfully extubated. Although blocking the inflammatory pathway has been hypothesized to prevent COVID-19 progression, the efficacy of IL-antagonists in COVID-19 remains debated in the literature. A recent meta-analysis including RCTs and observational studies showed that tocilizumab may reduce the risk of mechanical ventilation [4]. Low-certainty evidence from observational studies suggests an association between tocilizumab and lower mortality [4] that was then confirmed in a preliminary report by an RCT [22]. This was confirmed by other previous meta-analyses, including mostly observational studies [23,24]. Observational studies that investigated anakinra in COVID-19 patients showed that use was associated with lower mortality [25]. To our knowledge, there are no published data assessing a link between the number of ventilator-free days and anakinra.

Third, our study suggested that interrupting the inflammatory cascade may be a potential therapeutic target for severe COVID-19. Immunomodulation may influence cytokine release syndrome: In this context, an elevated serum concentration of interleukin-6 was observed and was associated with higher levels of SARS-CoV-2 viremia, progression to mechanical ventilation, and death [26–29]. Indeed, pooling data on immunomodulatory agents (i.e., corticosteroid, tocilizumab, and anakinra), we predicted a 6% survival benefit. This effect was already described in another small trial that showed that a course of high-

dose methylprednisolone, followed by tocilizumab if needed, may accelerate respiratory recovery, lower hospital mortality, and reduce the likelihood of invasive mechanical ventilation [30]. Moreover, another large cohort study showed that the use of corticosteroids in addition to tocilizumab therapy decreased in-hospital mortality [31]. By contrast, a meta-analysis on tocilizumab that included mostly observational studies did not show any additive effects if corticosteroids and tocilizumab were administered together [24]. Our findings should be interpreted with caution: We performed an observational study and residual confounding factors cannot be excluded. However, we are convinced that the combination of immunomodulatory agents should be prioritized in RCT.

Fourth, we observed that therapeutic heparin decreased the probability of being discharged from ICU non-invasive to ICU discharge. This result should be interpreted with caution. COVID-19 causes an endothelial dysfunction following endotheliitis after the direct invasion of endothelial cells [32,33] and, moreover, it can lead to a prothrombotic state secondary to the strong inflammatory response to infection [34]. These mechanisms lead to an extensive immunothrombosis: For these reasons, especially severe patients are more prone to developing thrombosis or pulmonary embolism [33,35,36], which are associated with severe COVID-19 and high mortality. Therefore, it is not surprisingly that anticoagulated (i.e., treated with heparin) COVID-19 patients in our analysis may have a worse prognosis.

Our study has several limitations. First, our analysis was carried on a small sample size regarding the limited number of events for each transition. For this reason, (i) several variables were not represented in all transitions; (ii) we were not able to test any interaction, especially between the various treatments, and, therefore, an additive drug effect was supposed; and (iii) formal causal inference techniques, such as the IPTW, were not considered. Indeed, the G-computation approach was used to predict the possible magnitude of the variable effect on day-60 mortality, and not to generate counterfactual data to be re-analyzed. Second, the model included only covariates measured at ICU admission (or at the first two days of ICU when missing at baseline), thus excluding time-dependent covariates. In this setting, as potential therapy initiation, discontinuation, or switches that may occur later during follow-up are ignored, we focused on an “intent-to-treat” effect. Third, the center effect could not be tested since it would lead to an over-parameterization. Fourth, we did not test differences between the different doses of corticosteroids; moreover, tocilizumab and anakinra were pooled in the same category, thus simplifying categories of immunomodulatory agents. We did not pool together IL-antagonists and corticosteroids, since corticosteroids influence a wider range of pathophysiological processes than IL-antagonists and could bring a very dispersive variable. Fifth, we used an underlying Markov assumption when defining the transition intensity; the probability of transition depends only on the time and the actual state. This hypothesis was considered a reasonable compromise between the complexity of the model and the small sample size of the cohort with respect to the number of transitions. Sixth, we could not investigate the D-dimer effects due to the high percentage of missing data in our dataset.

Finally, all results (G-computation included) should be interpreted in the context of a large cohort of ICU in France, thus mitigating the generalization of our results.

5. Conclusions

Using a multistate model based on prospectively collected data from 10 ICUs, we observed that the day-60 outcome in COVID-19 patients is highly dependent upon the first ventilation state upon ICU admission. Moreover, we illustrated that corticosteroids and IL-antagonists may influence the intubation duration and, when administered together, may favorably impact the 60-day mortality.

Supplementary Materials: The following are available online at <https://www.mdpi.com/2077-0383/10/3/544/s1>, Statistical methods details, missing values and imputation procedures, covariate categorization table and supplementary result figures: Supplementary Material of “Multistate modeling of COVID-19 patients using a large multicentric prospective cohort of critically ill patients.” Table S1:

Patients' characteristic and missing data, Figure S1: Stacked plot of predicted probabilities of state occupancy resulting from G-computation, Figure S2: Probability of state occupancy plots.

Author Contributions: Conceptualization, J.-F.T. and C.A.; methodology, M.U.; software, S.R. and M.U.; validation, C.D., N.B. and J.-F.T.; formal analysis, M.U.; investigation, J.-F.T.; resources, J.-F.T. and C.A.; data curation, S.R., B.S., E.d.M., L.B., D.G.-T., M.N., Y.C., B.M., M.G., V.L., N.T., S.S. and J.R.; writing—original draft preparation, M.U., N.B. and J.-F.T.; writing—review and editing, M.U., and N.B.; visualization, M.U. and C.D.; supervision, J.-F.T.; project administration, J.-F.T. and S.R.; funding acquisition, J.-F.T. All authors have read and agreed to the published version of the manuscript.

Funding: Buetti is currently receiving a Mobility grant from the Swiss National Science Foundation (grant numbers: P400PM_183865 and P4P4PM_194449) and a grant from the Bangerter-Rhyner Foundation. These grants support his fellowship in Paris and Geneva.

Institutional Review Board Statement: The OutcomeRea™ database was declared to the “Commission Nationale de l'Informatique et des Libertés” (#999262), in accordance with French law, and this study was approved by the Institutional Review Board of Clermont-Ferrand.

Informed Consent Statement: Informed consent was not necessary since the study did not modify patient management and data were anonymously processed.

Data Availability Statement: The data and R scripts presented in this study are available on request from the corresponding author. The data are not publicly available due to ethical restrictions.

Acknowledgments: The fellowship of NB was supported by the Swiss National Science Foundation (grant number: P400PM_183865 and P4P4PM_194449) and a grant from the Bangerter-Rhyner Foundation. The authors thank C. Feger (MD, EMIBiotech) for her editorial support. OUTCOMEREA Study Group: Jean-François Timsit, Elie Azoulay, Maïté Garrouste-Orgeas, Jean-Ralph Zahar, Bruno Mourvillier, Michael Darmon, Christophe Clec'h, Corinne Alberti, Stéphane Ruckly, Sébastien Bailly, Aurélien Vannieuwenhuyze, Romain Hernu, Christophe Adrie, Carole Agasse, Bernard Allaouchiche, Olivier Andreumont, Pascal Andreu, Laurent Argaud, Claire Ara-Somohano, Elie Azoulay, François Barbier, Deborah Boyer, Jean-Pierre Bedos, Thomas Baudry, Jérôme Bedel, Julien Bohé, Lila Bouadma, Jeremy Bourenne, Noël Brule, Cédric Brétonnière, Frank Chemouni, Christine Cheval, Julien Carvelli, Elisabeth Coupez, Martin Cour, Claire Dupuis, Etienne de Montmollin, Loa Dopeux, Anne-Sylvie Dumenil, Jean-Marc Forel, Marc Gannier, Charlotte Garret, Dany Goldgran-Tonedano, Steven Grangé, Antoine Gros, Hédia Hamed, Akim Haouache, Romain Hernu, Tarik Hissem, Vivien Hong Tuan Ha, Sébastien Jochmans, Jean-Baptiste Joffredo, Hatem Kallel, Guillaume Lacave, Virgine Laurent, Alexandre Lautrette, Clément Le bihan Eric Magalhaes, Virgine Lemiale, Guillaume Marcotte, Jordane Lebut, Maxime Lugosi, Sibylle Merceron, Benoît Misset, Mathild Neuville, Laurent Nicolet, Johanna Oziel, Laurent Papazian, Juliette Patrier, Benjamin Planquette, Aguila Radjou, Marie Simon, Romain Sonnevile, Jean Reignier, Bertrand Souweine, Carole Schwebel, Shidasp Siami, Romain Sonnevile, Nicolas Terzi, Gilles Troché, Marie Thuong, Guillaume Thierry, Marion Venot, Sondes Yaacoubi, Olivier Zambon, Julien Fournier, Stéphanie Bagur, Mireille Adda, Vanessa Vindrieux, Sylvie de la Salle, Pauline Enguerrand, Vincent Gobert, Stéphane Guessens, Helene Merle, Nadira Kaddour, Boris Berthe, Samir Bekkhouche, Kaouttar Mellouk, Mélaine Lebrazic, Carole Ouisse, Diane Maugars, Christelle Aparicio, Igor Theodose, Manal Nouacer, Veronique Deiler, Fariza Lamara, Myriam Moussa, Atika Mouaci, and Nassima Viguier.

Conflicts of Interest: The authors disclose that they do not have any conflict of interest. Timsit received fees for lectures with 3M, Merck, Pfizer, and Biomerieux; he received research grants from 3M, Merck, Pfizer, Biomerieux, and Medimune; and he participated in advisory boards by 3M, Merck, Bayer Pharma, Nabriva, Medimune, Pfizer, and Gilead. Souweine reports fees from MSD, SANOFI, LABORATOIRE AGUETTANT, and non-financial support from TTM BARD outside the submitted work. Terzi reports fees from Pfizer outside the submitted work.

References

1. World Health Organization. Available online: <https://covid19.who.int/> (accessed on 30 November 2020).
2. Petrilli, C.M.; Jones, S.A.; Yang, J.; Rajagopalan, H.; O'Donnell, L.; Chernyak, Y.; Tobin, K.A.; Cerfolio, R.J.; Francois, F.; Horwitz, L.I. Factors associated with hospital admission and critical illness among 5279 people with coronavirus disease 2019 in New York City: Prospective cohort study. *BMJ* **2020**, m1966. [CrossRef] [PubMed]

3. Cummings, M.J.; Baldwin, M.R.; Abrams, D.; Jacobson, S.D.; Meyer, B.J.; Balough, E.M.; Aaron, J.G.; Claassen, J.; Rabbani, L.E.; Hastie, J.; et al. Epidemiology, clinical course, and outcomes of critically ill adults with COVID-19 in New York City: A prospective cohort study. *Lancet* **2020**, *395*, 1763–1770. [[CrossRef](#)]
4. Tleyjeh, I.M.; Kashour, Z.; Damlaj, M.; Riaz, M.; Tlayjeh, H.; Altannir, M.; Altannir, Y.; Al-Tannir, M.; Tleyjeh, R.; Hassett, L.; et al. Efficacy and safety of tocilizumab in COVID-19 patients: A living systematic review and meta-analysis. *Clin. Microbiol. Infect.* **2020**, S1198743X2030690X. [[CrossRef](#)]
5. Zahar, J.-R.; Timsit, J.-F.; Garrouste-Orgeas, M.; Français, A.; Vesim, A.; Descorps-Declere, A.; Dubois, Y.; Souweine, B.; Haouache, H.; Goldgran-Toledano, D.; et al. Outcomes in severe sepsis and patients with septic shock: Pathogen species and infection sites are not associated with mortality. *Crit. Care Med.* **2011**, *39*, 1886–1895. [[CrossRef](#)]
6. Andersen, P.K.; Keiding, N. Multi-state models for event history analysis. *Stat. Methods Med. Res.* **2002**, *11*, 91–115. [[CrossRef](#)]
7. Putter, H.; Fiocco, M.; Geskus, R.B. Tutorial in biostatistics: Competing risks and multi-state models. *Stat. Med.* **2007**, *26*, 2389–2430. [[CrossRef](#)]
8. Beyersmann, J.; Allignol, A.; Schumacher, M. *Competing Risks and Multistate Models with R; Use R!* Springer: New York, NY, USA, 2012; ISBN 978-1-4614-2034-7.
9. Raffalovich, L.E.; Deane, G.D.; Armstrong, D.; Tsao, H.-S. Model selection procedures in social research: Monte-Carlo simulation results. *J. Appl. Stat.* **2008**, *35*, 1093–1114. [[CrossRef](#)]
10. Gran, J.M.; Lie, S.A.; Øyeflaten, I.; Borgan, Ø.; Aalen, O.O. Causal inference in multi-state models—sickness absence and work for 1145 participants after work rehabilitation. *BMC Public Health* **2015**, *15*, 1082. [[CrossRef](#)]
11. Williams, C.; Lewsey, J.D.; Briggs, A.H.; Mackay, D.F. Cost-effectiveness Analysis in R Using a Multi-state Modeling Survival Analysis Framework: A Tutorial. *Med. Decis. Making* **2017**, *37*, 340–352. [[CrossRef](#)]
12. De Wreede, L.C.; Fiocco, M.; Putter, H. mstate: An R Package for the Analysis of Competing Risks and Multi-State Models. *J. Stat. Softw.* **2011**, *38*. [[CrossRef](#)]
13. Hazard, D.; Kaier, K.; Von Cube, M.; Grodd, M.; Bugiera, L.; Lambert, J.; Wolkewitz, M. Joint analysis of duration of ventilation, length of intensive care, and mortality of COVID-19 patients: A multistate approach. *BMC Med. Res. Methodol.* **2020**, *20*, 206. [[CrossRef](#)] [[PubMed](#)]
14. Chang, R.; Elhusseiny, K.M.; Yeh, Y.-C.; Sun, W.-Z. COVID-19 ICU and Mechanical Ventilation Patient Characteristics and Outcomes—A Systematic Review and Meta-analysis. In Review. *medRxiv* **2020**. [[CrossRef](#)]
15. Abate, S.M.; Ahmed Ali, S.; Mantfardo, B.; Basu, B. Rate of Intensive Care Unit admission and outcomes among patients with coronavirus: A systematic review and Meta-analysis. *PLoS ONE* **2020**, *15*, e0235653. [[CrossRef](#)] [[PubMed](#)]
16. Gupta, S.; Hayek, S.S.; Wang, W.; Chan, L.; Mathews, K.S.; Melamed, M.L.; Brenner, S.K.; Leonberg-Yoo, A.; Schenck, E.J.; Radbel, J.; et al. Factors Associated With Death in Critically Ill Patients With Coronavirus Disease 2019 in the US. *JAMA Intern. Med.* **2020**, *180*, 1436. [[CrossRef](#)] [[PubMed](#)]
17. The RECOVERY Collaborative Group. Dexamethasone in Hospitalized Patients with Covid-19—Preliminary Report. *N. Engl. J. Med.* **2020**, NEJMoa2021436. [[CrossRef](#)]
18. Tomazini, B.M.; Maia, I.S.; Cavalcanti, A.B.; Berwanger, O.; Rosa, R.G.; Veiga, V.C.; Avezum, A.; Lopes, R.D.; Bueno, F.R.; Silva, M.V.A.O.; et al. Effect of Dexamethasone on Days Alive and Ventilator-Free in Patients with Moderate or Severe Acute Respiratory Distress Syndrome and COVID-19: The CoDEX Randomized Clinical Trial. *JAMA* **2020**, *324*, 1307. [[CrossRef](#)] [[PubMed](#)]
19. The WHO Rapid Evidence Appraisal for COVID-19 Therapies (REACT) Working Group; Sterne, J.A.C.; Murthy, S.; Diaz, J.V.; Slutsky, A.S.; Villar, J.; Angus, D.C.; Annane, D.; Azevedo, L.C.P.; Berwanger, O.; et al. Association Between Administration of Systemic Corticosteroids and Mortality Among Critically Ill Patients With COVID-19: A Meta-analysis. *JAMA* **2020**, *324*, 1330. [[CrossRef](#)]
20. Jeronimo, C.M.P.; Farias, M.E.L.; Val, F.F.A.; Sampaio, V.S.; Alexandre, M.A.A.; Melo, G.C.; Safe, I.P.; Borba, M.G.S.; Netto, R.L.A.; Maciel, A.B.S.; et al. Methylprednisolone as Adjunctive Therapy for Patients Hospitalized with Coronavirus Disease 2019 (COVID-19; Metcovid): A Randomized, Double-blind, Phase IIb, Placebo-controlled Trial. *Clin. Infect. Dis.* **2020**, ciaa1177. [[CrossRef](#)]
21. Bartoletti, M.; Marconi, L.; Scudeller, L.; Pancaldi, L.; Tedeschi, S.; Giannella, M.; Rinaldi, M.; Bussini, L.; Valentini, I.; Ferravante, A.F.; et al. Efficacy of corticosteroid treatment for hospitalized patients with severe COVID-19: A multicentre study. *Clin. Microbiol. Infect.* **2020**, S1198743X20305632. [[CrossRef](#)]
22. The REMAP-CAP Investigators; Gordon, A.C. Interleukin-6 Receptor Antagonists in Critically Ill Patients with Covid-19—Preliminary Report. *Intensive Care and Critical Care Medicine.* *medRxiv* **2021**. [[CrossRef](#)]
23. Zhao, J.; Cui, W.; Tian, B. Efficacy of tocilizumab treatment in severely ill COVID-19 patients. *Crit. Care* **2020**, *24*, 524. [[CrossRef](#)] [[PubMed](#)]
24. Malgic, J.; Schoones, J.W.; Pijls, B.G. Decreased Mortality in Coronavirus Disease 2019 Patients Treated with Tocilizumab: A Rapid Systematic Review and Meta-analysis of Observational Studies. *Clin. Infect. Dis.* **2020**, ciaa1445. [[CrossRef](#)] [[PubMed](#)]
25. Putman, M.; Chock, Y.P.E.; Tam, H.; Kim, A.H.J.; Sattui, S.E.; Berenbaum, F.; Danila, M.I.; Korsten, P.; Sanchez-Alvarez, C.; Sparks, J.A.; et al. Antirheumatic Disease Therapies for the Treatment of COVID-19: A Systematic Review and Meta-Analysis. *Arthritis Rheumatol.* **2020**, art.41469. [[CrossRef](#)]

26. Chen, X.; Zhao, B.; Qu, Y.; Chen, Y.; Xiong, J.; Feng, Y.; Men, D.; Huang, Q.; Liu, Y.; Yang, B.; et al. Detectable Serum Severe Acute Respiratory Syndrome Coronavirus 2 Viral Load (RNAemia) is Closely Correlated with Drastically Elevated Interleukin 6 Level in Critically Ill Patients with Coronavirus Disease 2019. *Clin. Infect. Dis.* **2020**, *71*, 1937–1942. [[CrossRef](#)] [[PubMed](#)]
27. Lin, A.; He, Z.-B.; Zhang, S.; Zhang, J.-G.; Zhang, X.; Yan, W.-H. Early Risk Factors for the Duration of Severe Acute Respiratory Syndrome Coronavirus 2 Viral Positivity in Patients with Coronavirus Disease 2019. *Clin. Infect. Dis.* **2020**, *71*, 2061–2065. [[CrossRef](#)]
28. Herold, T.; Jurinovic, V.; Arnreich, C.; Lipworth, B.J.; Hellmuth, J.C.; Von Bergwelt-Baildon, M.; Klein, M.; Weinberger, T. Elevated Levels of IL-6 and CRP Predict the Need for Mechanical Ventilation in COVID-19. *J. Allergy Clin. Immunol.* **2020**, *146*, 128–136. [[CrossRef](#)]
29. Del Valle, D.M.; Kim-Schulze, S.; Huang, H.-H.; Beckmann, N.D.; Nirenberg, S.; Wang, B.; Lavin, Y.; Swartz, T.H.; Madduri, D.; Stock, A.; et al. An Inflammatory Cytokine Signature Predicts COVID-19 Severity and Survival. *Nat. Med.* **2020**, *26*, 1636–1643. [[CrossRef](#)]
30. Ramiro, S.; Mostard, R.L.M.; Magro-Checa, C.; Van Dongen, C.M.P.; Dormans, T.; Buijs, J.; Gronenschild, M.; De Kruif, M.D.; Van Haren, E.H.J.; Van Kraaij, T.; et al. Historically controlled comparison of glucocorticoids with or without tocilizumab versus supportive care only in patients with COVID-19-associated cytokine storm syndrome: Results of the CHIC study. *Ann. Rheum. Dis.* **2020**, *79*, 1143–1151. [[CrossRef](#)]
31. Rubio-Rivas, M.; Ronda, M.; Padullés, A.; Mitjavila, F.; Riera-Mestre, A.; García-Forero, C.; Iriarte, A.; Mora, J.M.; Padullés, N.; Gonzalez, M.; et al. Beneficial effect of corticosteroids in preventing mortality in patients receiving tocilizumab to treat severe COVID-19 illness. *Int. J. Infect. Dis.* **2020**, *101*, 290–297. [[CrossRef](#)]
32. Varga, Z.; Flammer, A.J.; Steiger, P.; Haberecker, M.; Andermatt, R.; Zinkernagel, A.S.; Mehra, M.R.; Schuepbach, R.A.; Ruschitzka, F.; Moch, H. Endothelial Cell Infection and Endotheliitis in COVID-19. *Lancet* **2020**, *395*, 1417–1418. [[CrossRef](#)]
33. Ackermann, M.; Verleden, S.E.; Kuehnel, M.; Haverich, A.; Welte, T.; Laenger, F.; Vanstapel, A.; Werlein, C.; Stark, H.; Tzankov, A.; et al. Pulmonary Vascular Endothelialitis, Thrombosis, and Angiogenesis in Covid-19. *N. Engl. J. Med.* **2020**, *383*, 120–128. [[CrossRef](#)] [[PubMed](#)]
34. McGonagle, D.; O'Donnell, J.S.; Sharif, K.; Emery, P.; Bridgewood, C. Immune Mechanisms of Pulmonary Intravascular Coagulopathy in COVID-19 Pneumonia. *Lancet Rheumatol.* **2020**, *2*, e437–e445. [[CrossRef](#)]
35. CRICS TRIGGERSEP Group (Clinical Research in Intensive Care and Sepsis Trial Group for Global Evaluation and Research in Sepsis); Helms, J.; Tacquard, C.; Severac, F.; Leonard-Lorant, I.; Ohana, M.; Delabranche, X.; Merdji, H.; Clere-Jehl, R.; Schenck, M.; et al. High Risk of Thrombosis in Patients with Severe SARS-CoV-2 Infection: A Multicenter Prospective Cohort Study. *Intensive Care Med.* **2020**, *46*, 1089–1098. [[CrossRef](#)] [[PubMed](#)]
36. Klok, F.A.; Kruip, M.J.H.A.; Van der Meer, N.J.M.; Arbous, M.S.; Gommers, D.; Kant, K.M.; Kaptein, F.H.J.; Van Paassen, J.; Stals, M.A.M.; Huisman, M.V.; et al. Confirmation of the High Cumulative Incidence of Thrombotic Complications in Critically Ill ICU Patients with COVID-19: An Updated Analysis. *Thromb. Res.* **2020**, *191*, 148–150. [[CrossRef](#)] [[PubMed](#)]