

The mechanism and operation method of attenuation imaging

ATI is determined by data obtained using TOSHIBA®i800 (Toshiba, Tokyo, Japan) ultrasound equipment and is manipulated by technicians who are not aware of the re-sults of other reports.

ATI protocol

- (1) At least 5 valid data points will be collected.
- (2) The success rate is over 60%.
- (3) Every R2 value is 0.9 or greater, and data points are recorded.
- (4) The interquartile range is less than 30% of the median ATI.

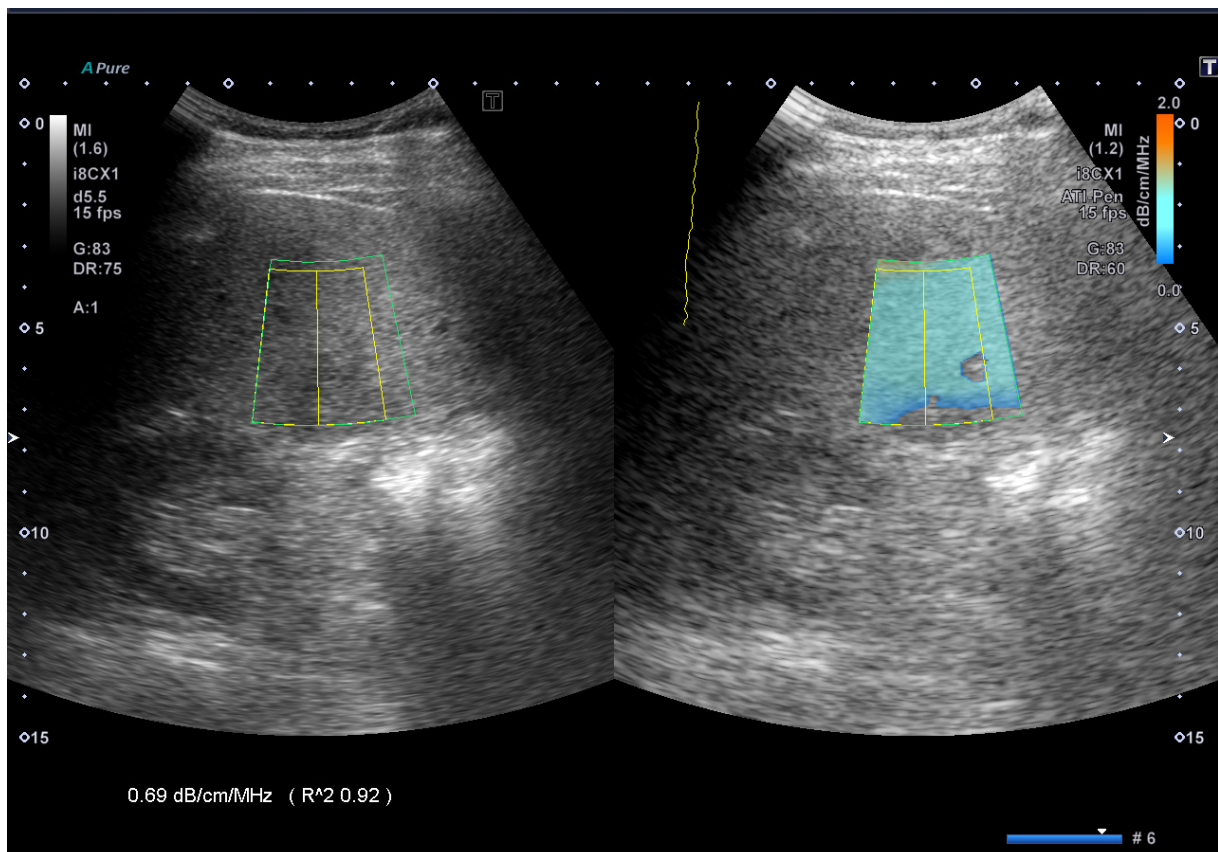


Figure S2. Case 1: biopsy-proven steatosis grade 0 with attenuation imaging 69 db/mm/MHz

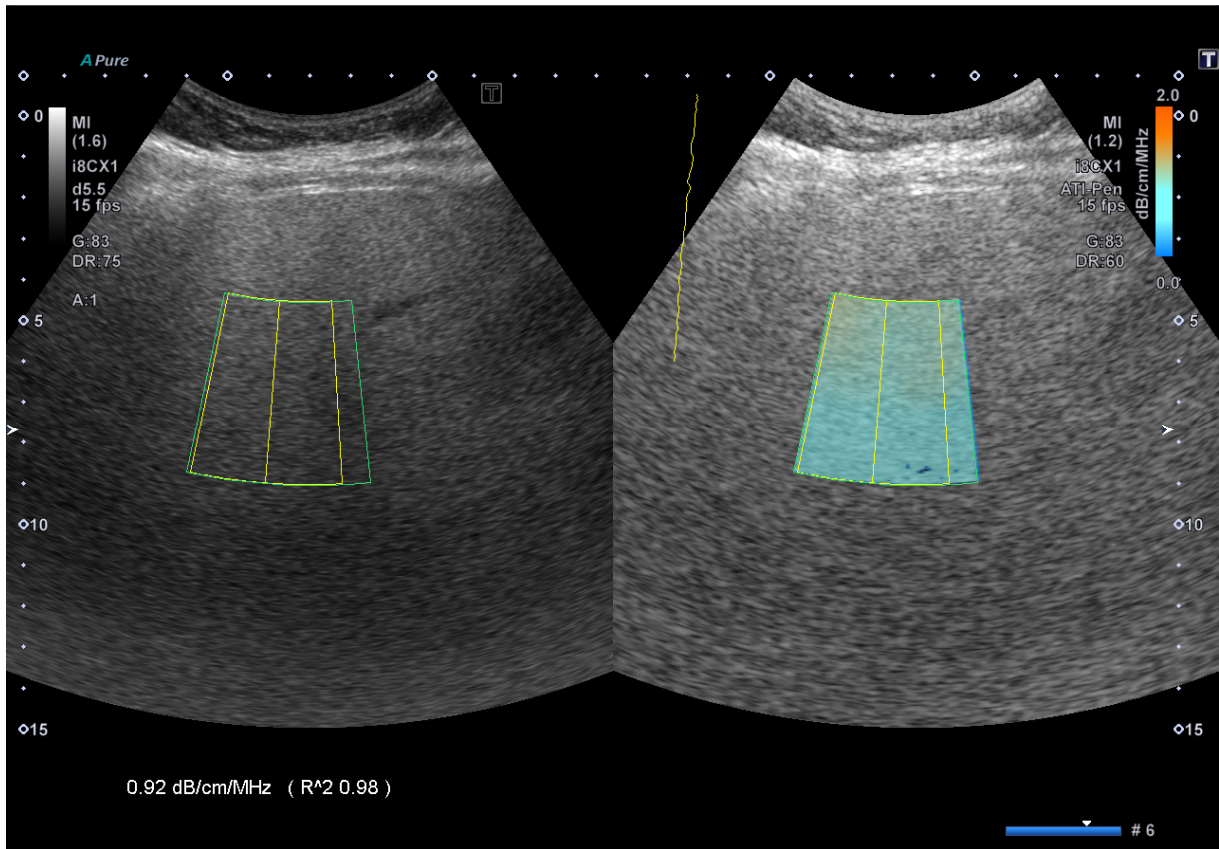


Figure S3. Case 2: biopsy-proven steatosis grade 2 with attenuation imaging 92 db/mm/MHz

All the related knowledge of attenuation imaging with TOSHIBA®i800 (Toshiba, Tokyo, Japan) is in this link:

<https://1drv.ms/p/s!Auav2ZIZkZSmpGTnNRDMkIN9vwnd>

And also in youtube:

<https://youtu.be/7Fw9msBRvbw>