

Supplement Table S1. Sepsis-Induced Coagulopathy (SIC) score ,platelets and international normalized ratio (INR) numeric values.

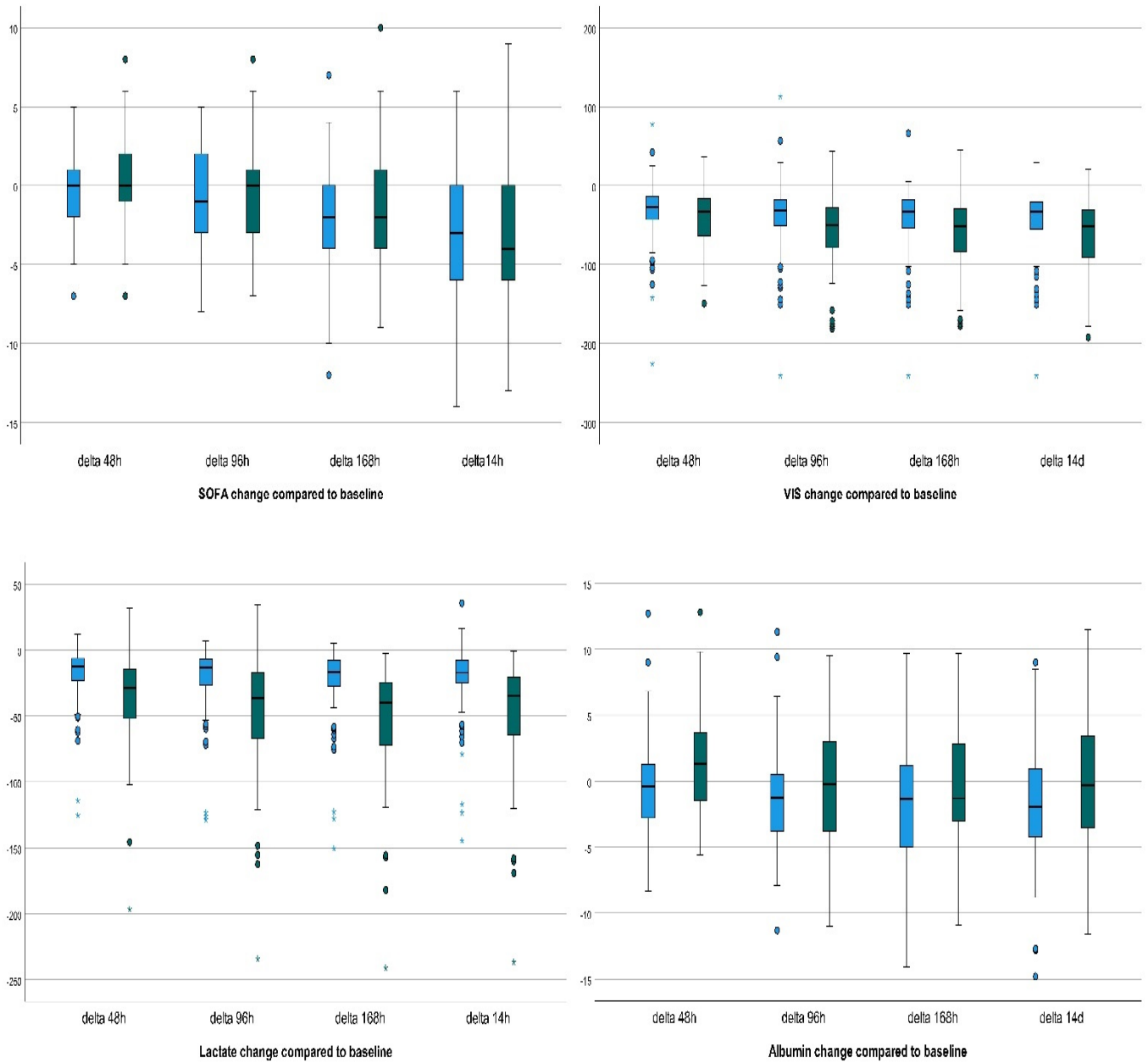
entire cohort					
	SIC baseline	SIC 48h	SIC 96h	SIC 168h	SIC 14d
no Plasma	3 (2 ;4)	3 (2 ;4)	3 (2 ;4)	2 (2 ;4)	3 (2 ;3)
Plasma	3 (3 ;5)	4 (3 ;5)	4 (3 ;5)	4 (3 ;5)	3 (2 ;4)
	INR baseline	INR 48h	INR 96h	INR 168h	INR 14d
no Plasma	1,19 (1,12 ;1,35)	1,11 (1,025 ;1,2)	1,135 (1,08 ;1,24)	1,135 (1,06 ;1,19)	1,16 (1,09 ;1,275)
Plasma	1,345 (1,19 ;1,49)	1,26 (1,12 ;1,54)	1,22 (1,1 ;1,44)	1,235 (1,14 ;1,435)	1,185 (1,105 ;1,275)
	Platelets baseline	Platelets 48h	Platelets 96h	Platelets 168h	Platelets 14d
no Plasma	188 (121 ;288)	146,5 (89,5 ;243)	152 (83 ;244)	186,5 (113 ;340)	263 (116,5 ;354,5)
Plasma	146,5 (68 ;219,5)	77 (44 ;134)	70 (40 ;132)	84 (44,5 ;173,5)	140 (65 ;310,5)
matched cohort					
	SIC baseline	SIC 48h	SIC 96h	SIC 168h	SIC 14d
no Plasma	3 (3 ;4)	3 (2 ;4)	3 (2 ;4)	2 (2 ;4)	3 (2 ;4)
Plasma	3 (3 ;4)	4 (3 ;5)	4 (3 ;5)	4 (3 ;5)	3 (2 ;4)
	INR baseline	INR 48h	INR 96h	INR 168h	INR 14d
no Plasma	1,19 (1,11 ;1,31)	1,12 (1,04 ;1,27)	1,14 (1,08 ;1,25)	1,14 (1,09 ;1,19)	1,185 (1,06 ;1,3)
Plasma	1,34 (1,18 ;1,45)	1,22 (1,12 ;1,44)	1,18 (1,09 ;1,4)	1,23 (1,11 ;1,41)	1,17 (1,11 ;1,26)
	Platelets baseline	Platelets 48h	Platelets 96h	Platelets 168h	Platelets 14d
no Plasma	185 (99 ;256)	135 (82 ;216)	123 (75 ;204)	176 (97 ;340)	233,5 (101 ;354)
Plasma	172 (71 ;231)	92,5 (55 ;148)	83 (48 ;139)	90,5 (54 ;190)	149 (67 ;310)

Supplement Table S2. Additional sepsis source and microbiologic information; GUI: Genitourinary infection.

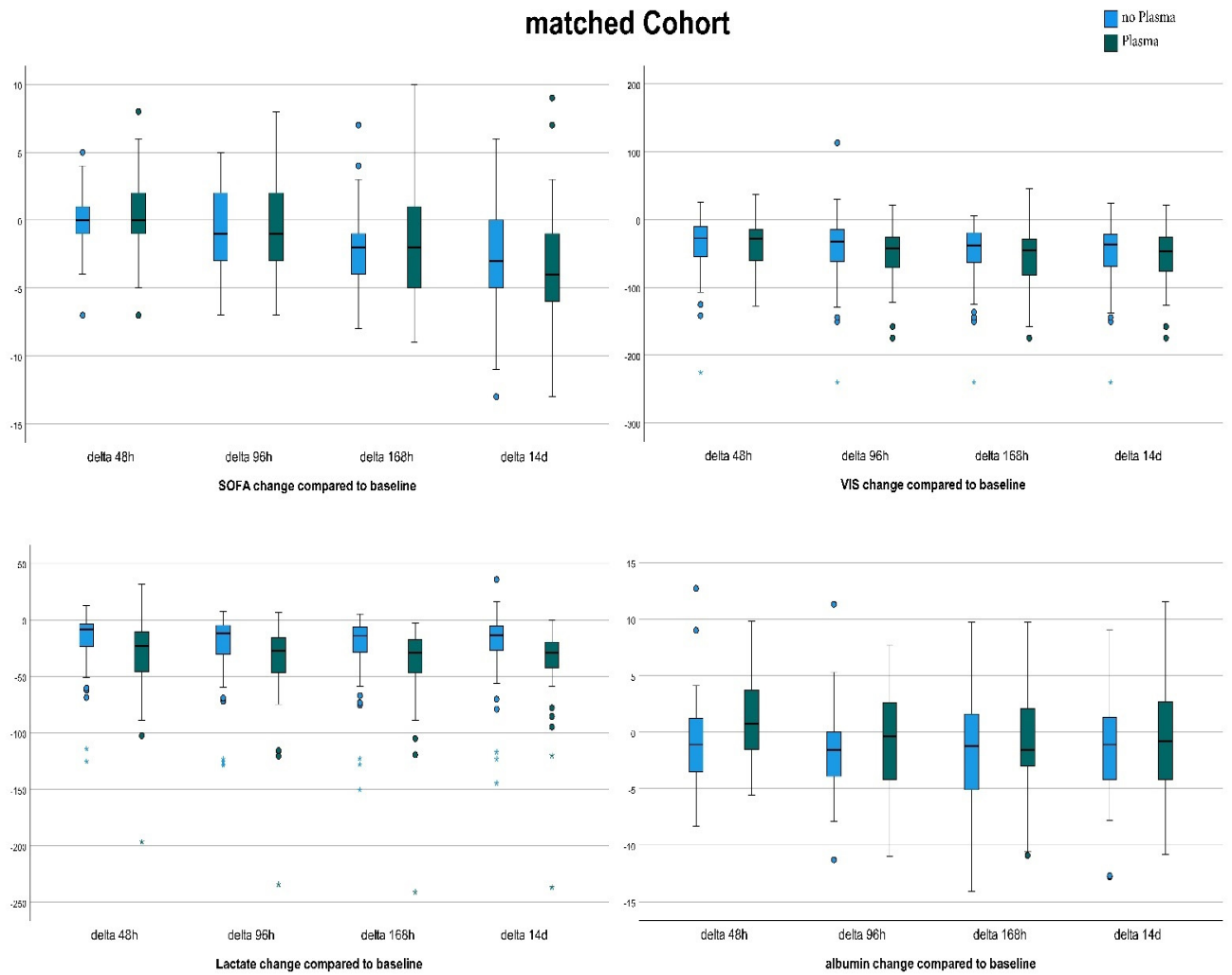
		unmatched cohort		matched cohort	
Focus		no Plasma	Plasma	no Plasma	Plasma
	pulmonary	27 (16,8%)	7 (7%)	15 (21,1%)	4 (5,6%)
	abdominal	111 (68,9%)	81 (81%)	49 (69%)	57 (80,3%)
	GUI	12 (7,5%)	6 (6%)	3 (4,2%)	5 (7%)
	vascular	4 (2,5%)	4 (4%)	1 (1,4%)	3 (4,2%)
	unknown	4 (2,5%)	2 (2%)	2 (2,8%)	2 (2,8%)
	catheter associated	2 (1,2%)	0 (0%)	1 (1,4%)	0 (0%)
	cardiac	1 (0,6%)	0 (0%)	17 (23,9%)	5 (7%)
		no Plasma	Plasma	no FFP	FFP
	positive source control	134 (83,2%)	91 (91%)	54 (76,1%)	66 (93%)
	surgical source control	124 (77%)	88 (88%)	49 (69%)	63 (88,7%)
	previous antibiotic treatment	71 (44,1%)	37 (37%)	23 (32,4%)	14 (19,7%)
primary positive sample		no Plasma	Plasma	no Plasma	Plasma
	no positive sample	10 (6,2%)	8 (8%)	4 (5,6%)	3 (4,2%)
	blood culture	62 (38,5%)	26 (26%)	27 (38%)	21 (29,6%)
	tracheal sample	36 (22,4%)	13 (13%)	17 (23,9%)	11 (15,5%)
	wound swab	4 (2,5%)	7 (7%)	4 (5,6%)	5 (7%)
	drain sample	24 (14,9%)	14 (14%)	8 (11,3%)	14 (19,7%)
	rectal/ fecal sample	3 (1,9%)	7 (7%)	2 (2,8%)	2 (2,8%)
	intraoperative swab	17 (10,6%)	21 (21%)	8 (11,3%)	12 (16,9%)
	catheter tip	3 (1,9%)	2 (2%)	0 (0%)	1 (1,4%)
	urin	2 (1,2%)	2 (2%)	1 (1,4%)	2 (2,8%)
primary identified germ		no Plasma	Plasma	no Plasma	Plasma
	escherichia coli	49 (30,4%)	22 (22%)	23 (32,4%)	14 (19,7%)
	klebsiella pneumoniae	14 (8,7%)	5 (5%)	6 (8,5%)	5 (7%)
	staphylococcus aureus	10 (6,2%)	4 (4%)	3 (4,2%)	4 (5,6%)
	enterococcus faecium	15 (9,3%)	9 (9%)	9 (12,7%)	6 (8,5%)
	VRE	3 (1,9%)	12 (12%)	2 (2,8%)	9 (12,7%)
	peusomonas aeruginosa	8 (5%)	4 (4%)	3 (4,2%)	2 (2,8%)
	other	52 (32,3%)	36 (36%)	21 (29,6%)	28 (39,4%)
secondary positive sample		no Plasma	Plasma	no Plasma	Plasma
	blood culture	24 (14,9%)	8 (8%)	9 (12,7%)	8 (11,3%)
	tracheal sample	33 (20,5%)	11 (11%)	16 (22,5%)	8 (11,3%)
	wound swab	10 (6,2%)	6 (6%)	6 (8,5%)	3 (4,2%)
	drain sample	22 (13,7%)	8 (8%)	9 (12,7%)	8 (11,3%)
	rectal/ fecal sample	6 (3,7%)	4 (4%)	0 (0%)	2 (2,8%)
	intraoperative swab	23 (14,3%)	17 (17%)	11 (15,5%)	11 (15,5%)
	catheter tip	3 (1,9%)	2 (2%)	1 (1,4%)	1 (1,4%)
	urin	4 (2,5%)	6 (6%)	1 (1,4%)	4 (5,6%)
secondary identified germ		no Plasma	Plasma	no Plasma	Plasma
	escherichia coli	18 (11,2%)	12 (12%)	10 (14,1%)	8 (11,3%)
	klebsiella pneumoniae	8 (5%)	2 (2%)	2 (2,8%)	1 (1,4%)
	staphylococcus aureus	3 (1,9%)	2 (2%)	0 (0%)	2 (2,8%)
	enterococcus faecium	15 (9,3%)	6 (6%)	8 (11,3%)	5 (7%)
	VRE	14 (8,7%)	4 (4%)	1 (1,4%)	2 (2,8%)
	peusomonas aeruginosa	11 (6,8%)	2 (2%)	9 (12,7%)	2 (2,8%)
	other	57 (35,4%)	34 (34%)	24 (33,8%)	25 (35,2%)
Primary Antibiotics		no Plasma	Plasma	no Plasma	Plasma
	Piperacillin	57 (35,4%)	19 (19%)	24 (33,8%)	17 (23,9%)
	Meropenem	93 (57,8%)	68 (68%)	38 (53,5%)	42 (59,2%)
	other	11 (6,8%)	13 (13%)	9 (12,7%)	12 (16,9%)

entire Cohort

no Plasma
Plasma



Supplement Figure S1. Septic shock parameters change compared to baseline in the entire cohort. No statistical analysis was performed, these figures are for reference only SOFA: Sepsis related Organ Failure Assessment Score; VIS: Vasoactive Inotropic Score.



Supplement Figure S2: *Septic shock parameters change compared to baseline in the matched cohort.* No statistical analysis was performed, these figures are for reference only SOFA: Sepsis related Organ Failure Assessment Score; VIS: Vasoactive Inotropic Score.