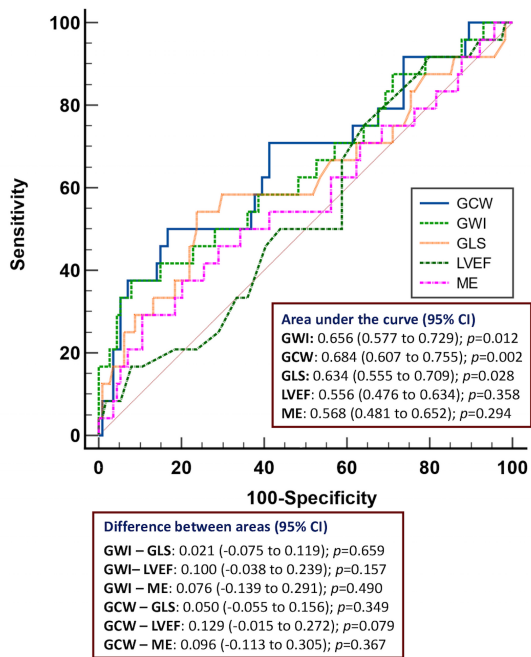
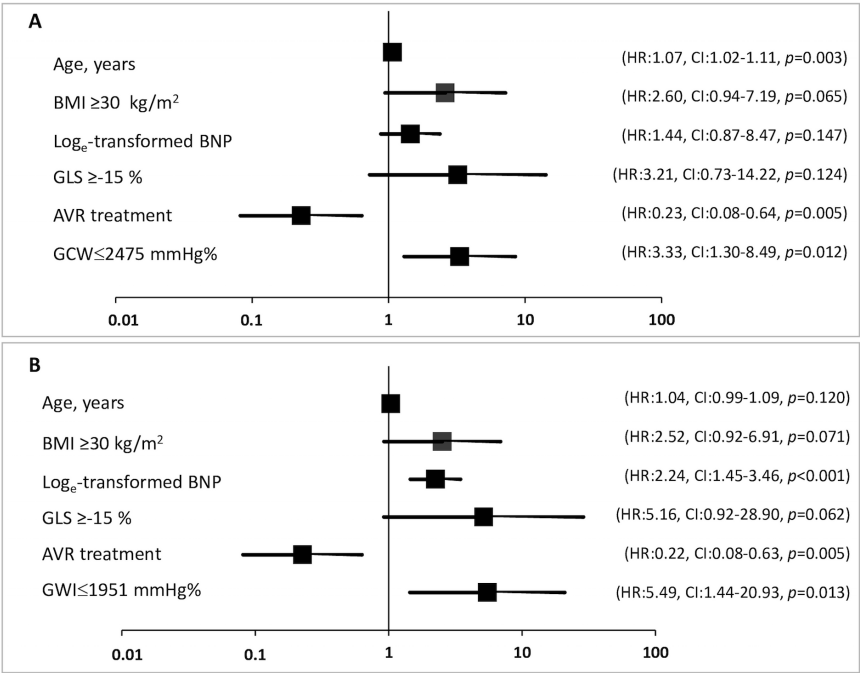


Supplementary Figure S1



Receiver operator characteristics (ROC) curves for global work index (GWI), global constructive work (GCW), global longitudinal strain (GLS), left ventricular ejection fraction (LVEF) and mechano-energetic efficiency (ME). CI = confidence interval

Supplementary Figure S2



Forest plot showing the HR (bold square) and 95% Confidence Intervals (CI) for each variable in the final Cox multivariate model. Lower GCW (**A**) and GWI (**B**) values are associated with significantly higher risks of all-cause mortality.