

Supplementary

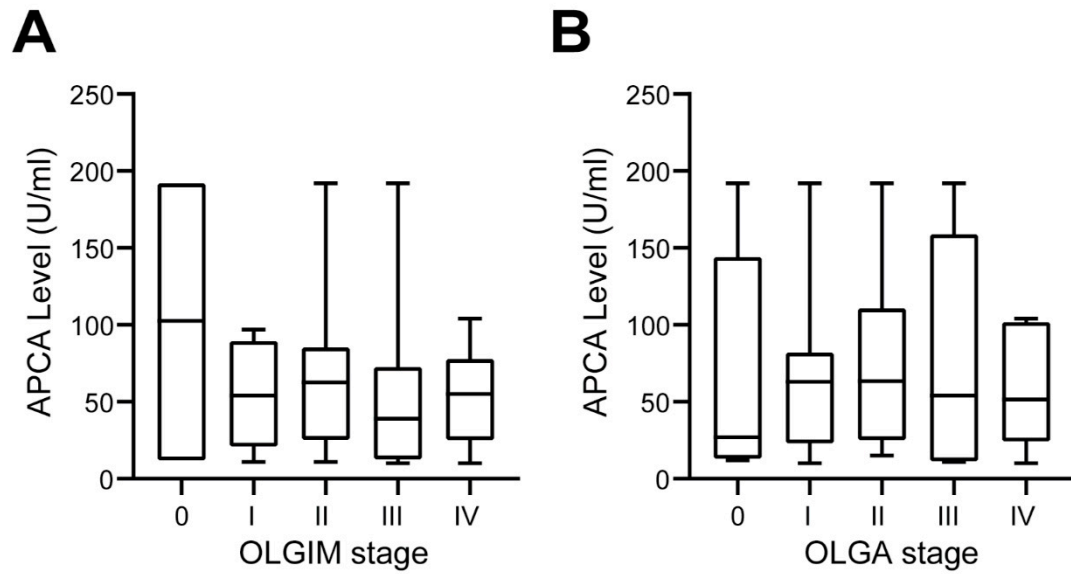
Table S1. Detailed clinical findings of APCA positive cases.

Characteristics	Autoimmune gastritis (N = 46)
Diagnosis of H. pylori infection	
≥ 30 EIU / < 30 EIU	18/28 (39.1%/60.9%)
Associated disorders	
Hashimoto's thyroiditis, N (%)	7 (15.2%)
Graves' disease, N (%)	2 (4.3%)
Rheumatoid arthritis, N (%)	2 (4.3%)
Low Vitamin B12, N (%) *	25 (54.3%)
Pernicious anemia, N (%) †	7 (15.2%)
Associated pathology feature	
Enterochromaffin-like cell hyperplasia, N (%)	19 (41.3)

*Low vitamin B12 were defined as vitamin B12 < 400 pmol/L

†Vitamin B12 deficiency were defined as vitamin B12 < 145 pmol/L

Supplementary Figure S1



Supplementary Figure S1. Serum concentration of APCA did not correlate with the worst OLGIM score detected during longitudinal follow-up (A, $r=-0.1$; $p=0.39$) or the worst OLGA stage (B, $r=0.01$; $p=0.96$).