

Table S1. The diagnostic performance of serum AsAGP according to fibrosis stages of CHB patients comparing healthy control.

	CHB with F0-1 versus. Healthy control	CHB with F2 versus healthy control	CHB with F3 versus healthy control
AUC (95% CI)	0.610 (0.503 - 0.717)	0.513 (0.342 - 0.684)	0.685 (0.562 – 0.809)
Optimal cut-off ($\mu\text{g/ml}$)	0.896	1.001	0.926
Sensitivity	84.6%	62.5%	82.6%
Specificity	50%	60.3%	54.4%

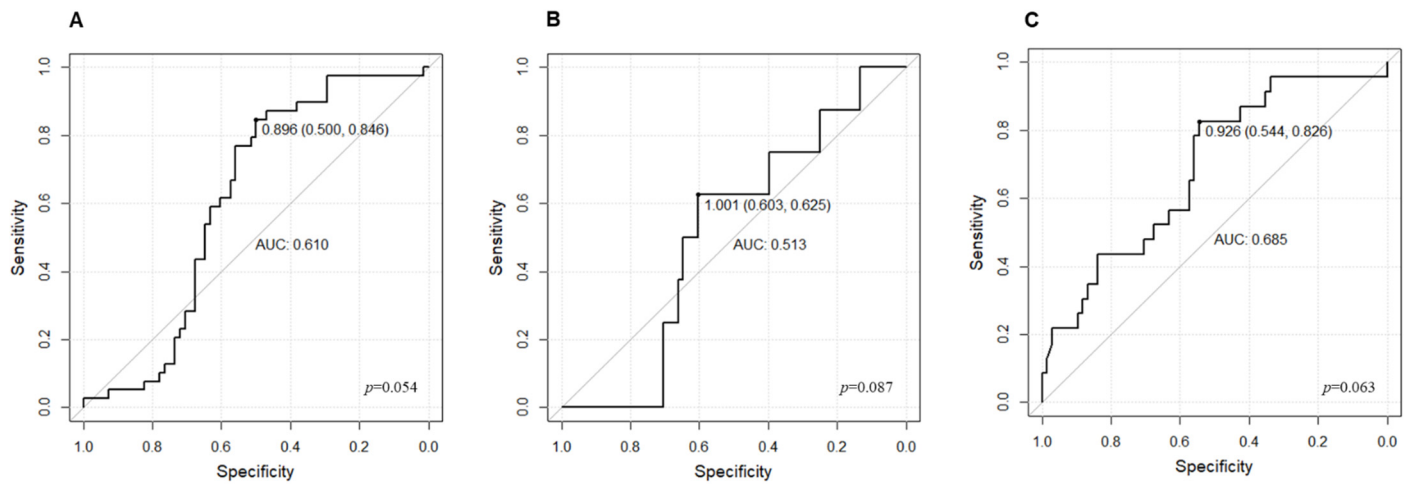


Figure S1. The AUROC of serum AsAGP level for differentiating liver fibrosis stages in CHB patients comparing healthy control. A; CHB F0-1 versus healthy control, B; CHB F2 versus healthy control, C; CHB F3 versus healthy control.

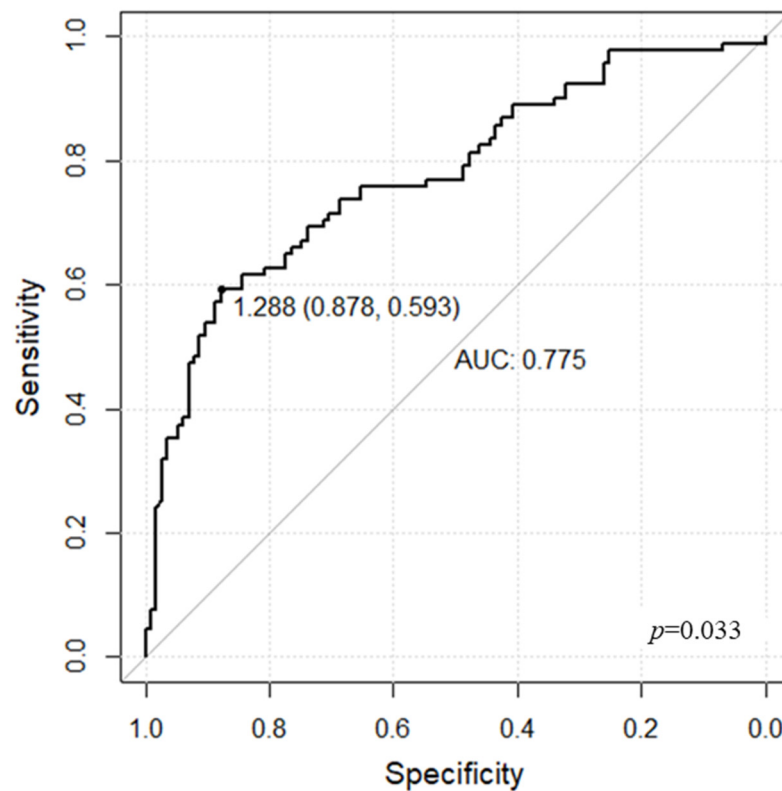


Figure 2. The AUROC of serum AsAGP level for differentiating advanced fibrosis in CHB patients comparing healthy control.