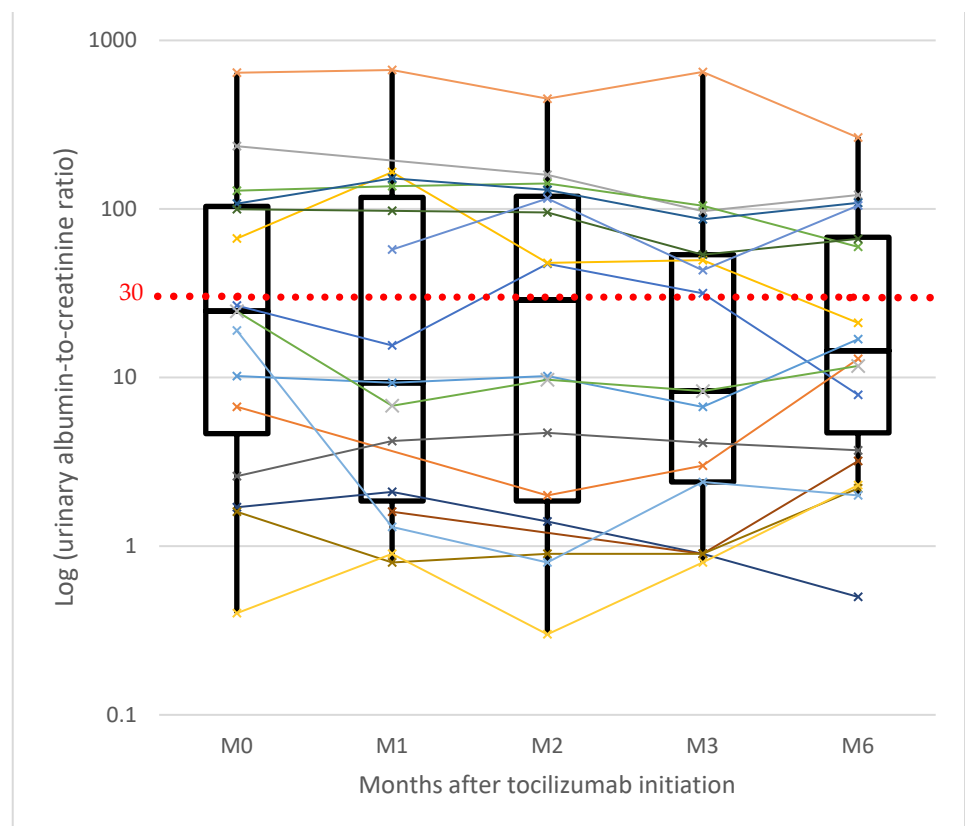




**Table S1.** Characteristics of seven patients with simultaneous tocilizumab measurements in the blood and urine.

	Age (years)	Sex	Dose (mg)	Route of administration	TCZ plasma concentration (mg/L)	TCZ urinary concentration (mg/L)	ACR (mg/mmol)	GFR (mL/mn/1.73m <sup>2</sup> )
1	41	Male	162	SC	67.9	<1	/	31
2	73	Male	552	IV	37.5	<1	10	39
3	54	Male	736	IV	40.5	<1	41.8	36
4	31	Male	162	SC	75.8	<1	67.5	/
5	61	Female	480	IV	36.2	<1	31.5	35
6	46	Male	608	IV	35.9	<1	343.9	25
7	77	Female	162	SC	124	2.9	948.8	30

IV: intravenous, SC: subcutaneous, TCZ: tocilizumab, ACR: urinary albumin-to-creatinine ratio, GFR: glomerular filtration rate



**Figure S1.** Temporal evolution of the urinary albumin-to-creatinine ratio (ACR) before tocilizumab administration (M0) and at M1, M2, M3 and M6 after tocilizumab administration. Each colored line represents one patient. Box plots represent the medians and 25<sup>th</sup>-75<sup>th</sup> percentile. The red dotted line represents the threshold value of macroalbuminuria (ACR = 30 mg/mmol). Friedman test,  $\chi^2 = 3.83$ ,  $p = 0.430$ .