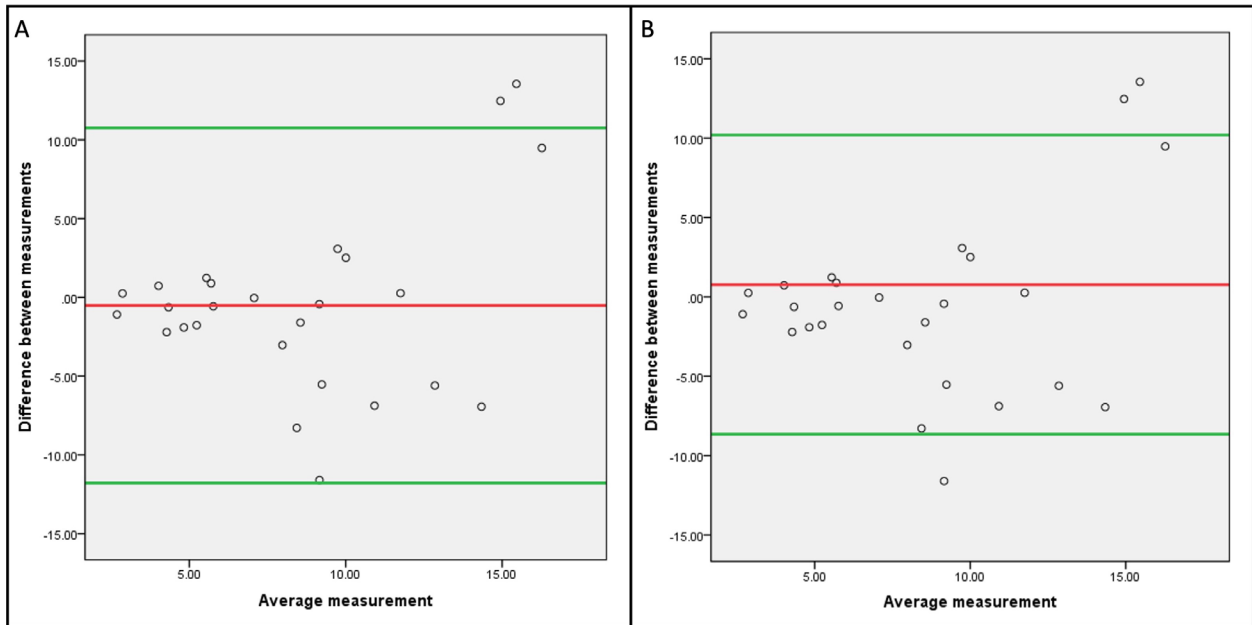


## Supplemental Material



**Supplemental Figure S1.** Bland-Altman plot of NIBUT measurements without a face mask. **A:** In the 1<sup>st</sup> and 3<sup>rd</sup> sessions the average difference was -0.52, suggesting a small average difference between one measurement versus the other. **B:** In the 2<sup>nd</sup> and 4<sup>th</sup> sessions the average difference was 0.77, suggesting a small average difference between one measurement versus the other.