

Supplementary Materials

Supplementary Table S1. Univariate and multivariate logistic regression analyses for the presence of Renal Parenchyma Attenuation (RPA) below 24 HU in CT of hospitalized patients with COVID-19.

| | UNIVARIATE MODEL | | | MULTIVARIATE MODEL | | |
|-------------------------|------------------|-----------|-------|--------------------|------------|--------------|
| | Odds Ratio | 95% CI | P | Odds Ratio | 95% CI | p |
| Age, years | 0.98 | 0.94–1.02 | 0.293 | | | |
| Male gender | 1.40 | 0.48–4.04 | 0.534 | | | |
| Charlson index | 0.98 | 0.76–1.26 | 0.869 | | | |
| Hypertension | 1.36 | 0.52–3.55 | 0.535 | | | |
| Diabetes | 0.56 | 0.11–2.81 | 0.482 | | | |
| Chronic kidney disease | 1.22 | 0.15–0.98 | 0.048 | 0.24 | 0.02–2.32 | 0.218 |
| Creatinine, mg/dl | 0.31 | 0.08–1.24 | 0.099 | 0.38 | 0.06–2.38 | 0.300 |
| Acute kidney injury | 1.08 | 0.82–5.77 | 0.105 | 3.88 | 1.17–12.92 | 0.027 |
| Ground glass opacities | 4.20 | 0.89–19.8 | 0.070 | 3.78 | 0.73–19.6 | 0.113 |
| Perirenal fat stranding | 0.41 | 0.15–1.12 | 0.083 | 0.49 | 0.15–1.60 | 0.241 |

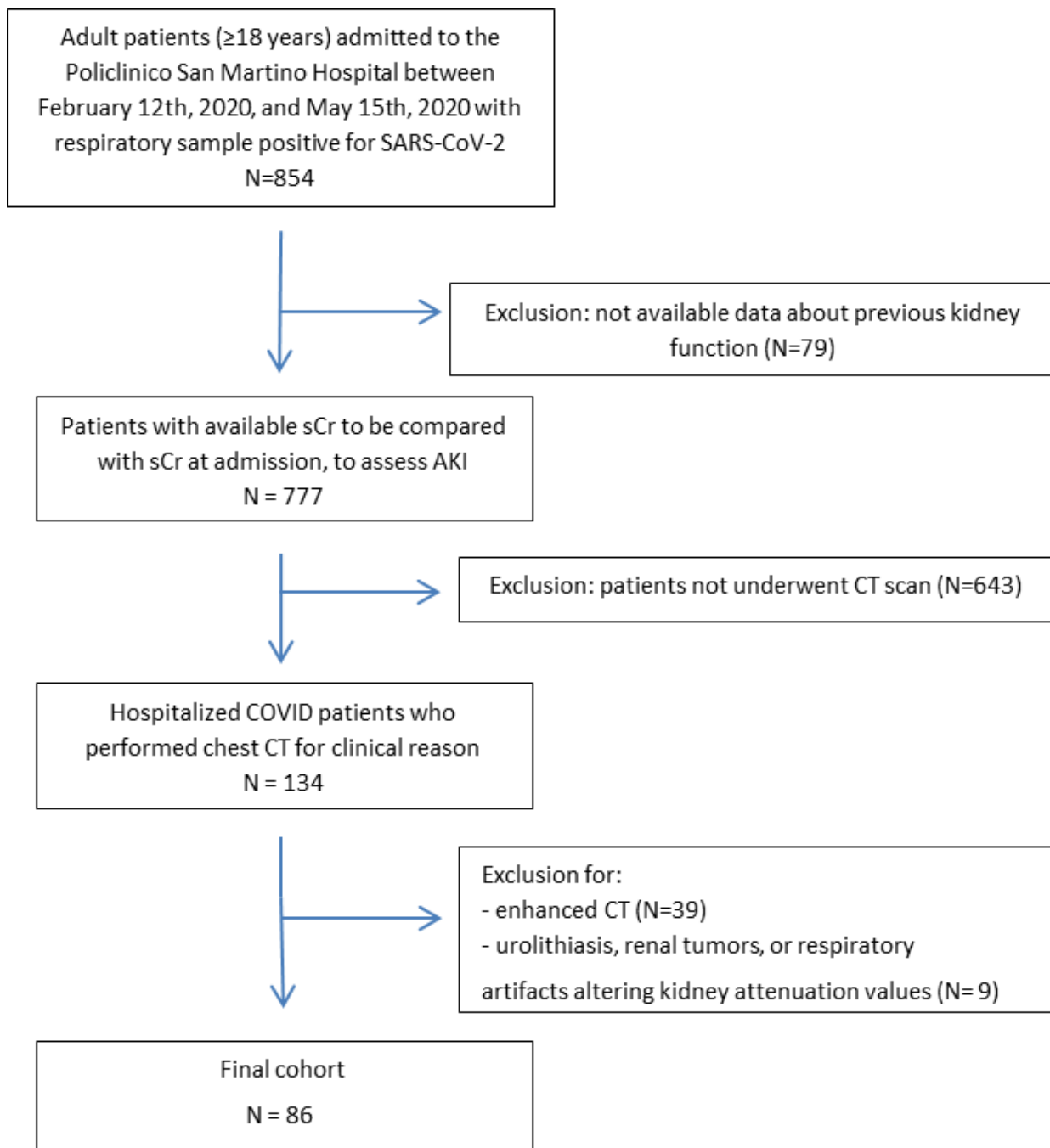
Abbreviations: CI, confidence intervals; HU, Hounsfield units.

Supplementary Table S2. Univariate and multivariate logistic regression analyses for the presence of perirenal fat stranding (PFS) in CT of hospitalized patients with COVID-19.

| | UNIVARIATE MODEL | | | MULTIVARIATE MODEL | | |
|------------------------|------------------|------------|--------------|--------------------|------------|-------|
| | Odds Ratio | 95% CI | P | Odds Ratio | 95% CI | p |
| Age, years | 1.06 | 1.01–1.10 | 0.006 | 1.04 | 0.99–1.09 | 0.073 |
| Male gender | 3.59 | 1.28–10.10 | 0.015 | 2.14 | 0.63–7.28 | 0.220 |
| Charlson index | 1.10 | 0.85–1.41 | 0.466 | | | |
| Hypertension | 3.57 | 1.25–10.18 | 0.017 | 1.49 | 0.43–5.14 | 0.531 |
| Diabetes | 5.10 | 0.61–42.14 | 0.130 | | | |
| Heart failure | 2.54 | 0.29–22.34 | 0.401 | | | |
| Creatinine, mg/dl | 12.48 | 1.95–79.65 | 0.008 | 4.86 | 0.74–31.63 | 0.098 |
| Acute kidney injury | 1.29 | 0.50–3.38 | 0.598 | | | |
| RPA <24 HU | 1.01 | 0.98–1.03 | 0.466 | | | |
| Chronic kidney disease | 2.61 | 0.68–9.96 | 0.159 | | | |

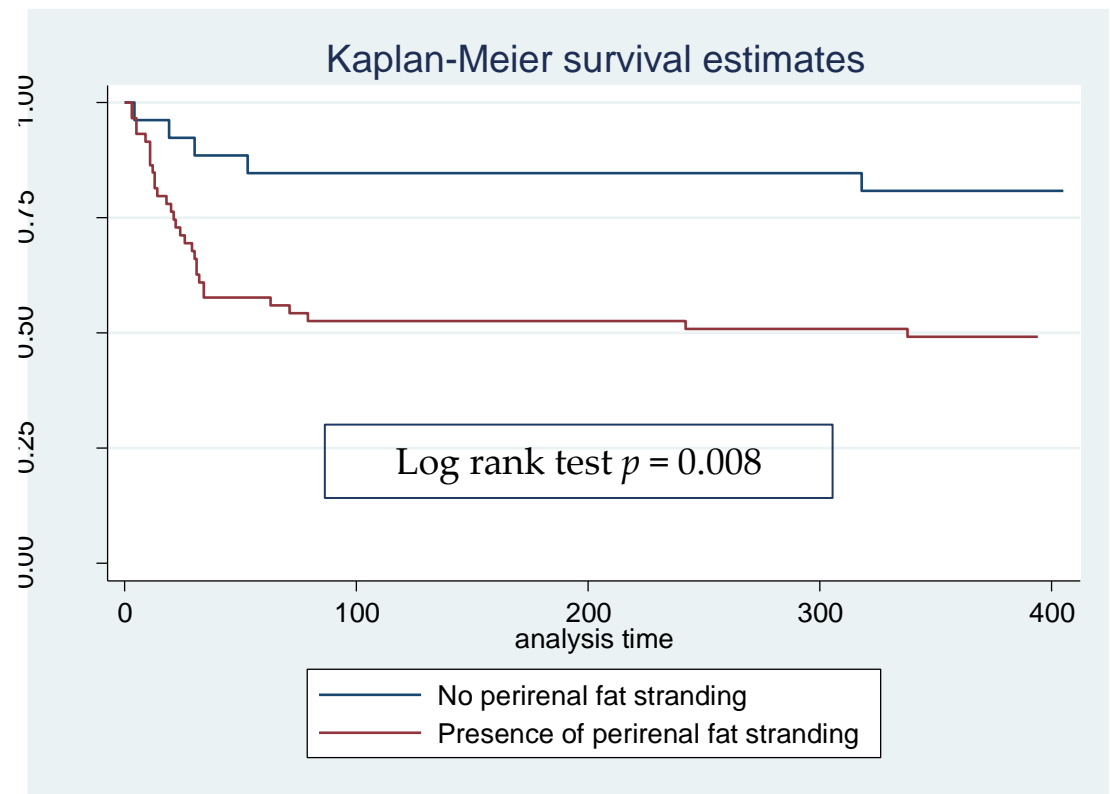
Abbreviations: CI, confidence intervals; RPA, renal parenchyma attenuation; HU, Hounsfield units.

Supplementary Figure S1. Flow diagram for selection of study patients.

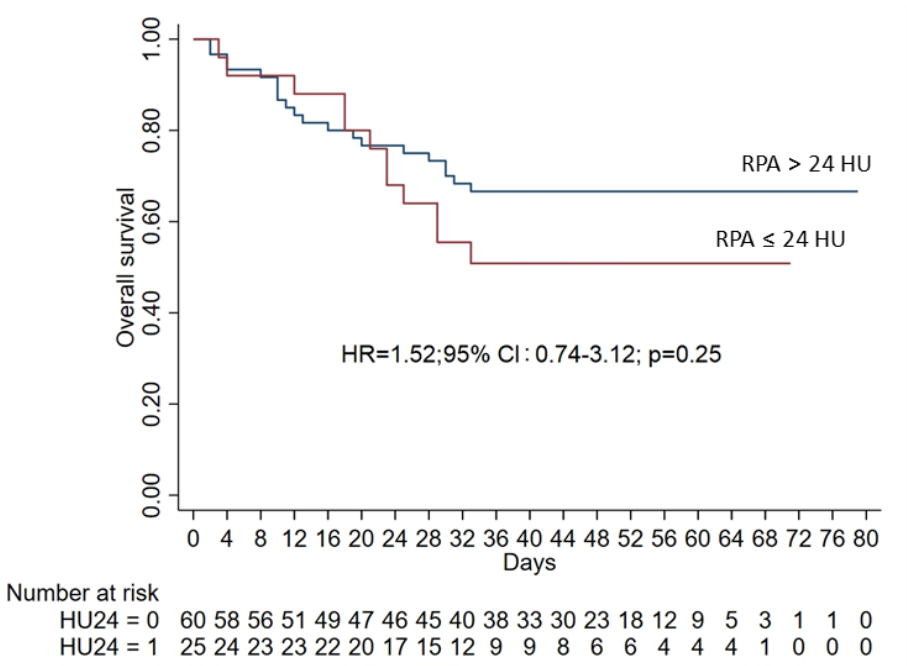


Abbreviations: sCr, serum creatinine; AKI, acute kidney injury; CT, computed tomography.

Supplementary Figure S2. Kaplan Maier curves of survival for 9 months death of hospitalized COVID-19 patients on the basis of the presence of CT perinephric fat stranding (PFS).



Supplementary Figure S3. Kaplan Maier curves of survival for hospitalized COVID-19 patients on the basis of AKI-specific cut off of Renal Parenchyma Attenuation (RPA).



Abbreviations: HR, hazard ratio; CI, confidence intervals; RPA, renal parenchyma attenuation; HU, Hounsfield units.