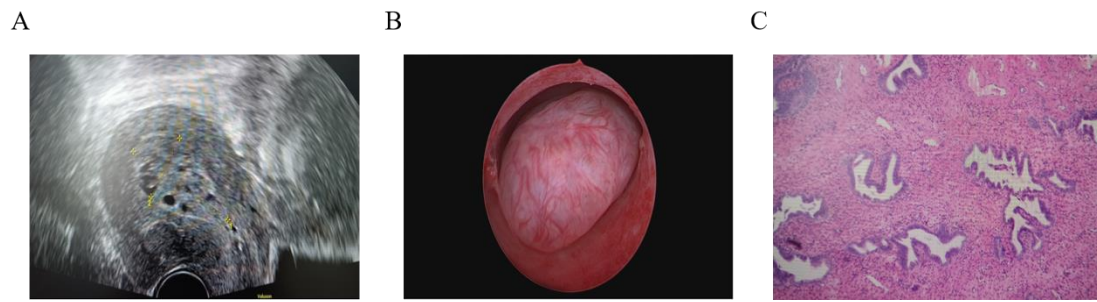


**Table S1** Immunohistochemical markers of APA in our study

Immunohistochemical staining					
% (N)					
Glandular	ER (+)	94.8% (92/97)	Stromal	CD10 (-)	89.5% (34/38)
	PR (+)	94.8% (92/97)		p16 (+)	86.9% (53/61)
	Ki-67 < 30% (+)	51.5% (51/99)		h-caldesmon (-)	66.7% (2/3)
	Mutation-type p53	59.5% (47/79)		Desmin (+)	75.0% (3/4)
	PTEN (+)	18.8% (3/16)		Vimentin (+)	88.9% (16/18)
	CDX2 (+)	50.0% (1/2)			
	MLH1 (+)	96.4% (27/28)			
	MSH2 (+)	96.4% (27/28)			
	MSH6 (+)	96.4% (27/28)			
	PMS2 (+)	96.4% (27/28)			

### Supplementary figure and figure legends



**Figure S1** Representative image of APA in our study.

(A) Representative ultrasound image, (B) Representative hysteroscopic image, (C) Representative microscopic appearance (H&E stain).