



Table S1. Primary and key secondary outcomes of included studies reporting late mortality. Abbreviations: AV block—atrioventricular block; CVD—cardiovascular death; HTX—heart transplantation; other—see Figure 2.

Study	SCD	CVD	HTX	Long-term mortality (or equivalent events in total)	SVT incidence (%)	AV block incidence (%)	Pacemaker implantation incidence (%)	NYHA Class > II incidence (%)	SVD incidence (%)	SVR incidence (%)	Reintervention incidence (%)	Annual long-term mortality (%/year)
<i>Adachi et al.</i>	0	2	0	2	N/A	N/A	N/A	18.8	N/A	50	37.5	0.1
<i>Auer et al.</i>	0	9	0	9	30.2	N/A	26	19.8	17.7	49	N/A	1.4
<i>Bjarke et al.</i>	2	17	0	19	7.9	16.8	0	N/A	24.8	N/A	1	2.8
<i>Bogers et al.</i>	0	7	3	10	N/A	N/A	41.4	21.9	70	62.5	37.5	1.7
<i>Horer et al.</i>	0	6	2	8	N/A	16.1	26.8	N/A	22	4.9	35.7	1.1
<i>Kapa et al.</i>	10	3	0	13	N/A	N/A	N/A	N/A	43.4	60.5	N/A	1.8
<i>Marathe et al.</i>	0	0	1	1	N/A	31.6	36.8	5.3	N/A	N/A	21.2	0.1 Anatomic Repair 0.2 Fontan Repair
<i>McCombe et al.</i>	5	1	1	6	15.4	35.9	20.5	N/A	12.8	56	N/A	0.4
<i>Prieto et al.</i>	0	9	3	12	N/A	32.5	N/A	N/A	30	42.5	N/A	0.6
<i>Tocharoenchok et al.</i>	0	3	0	3	9.1	N/A	N/A	9.1	N/A	9	27.3	0.6

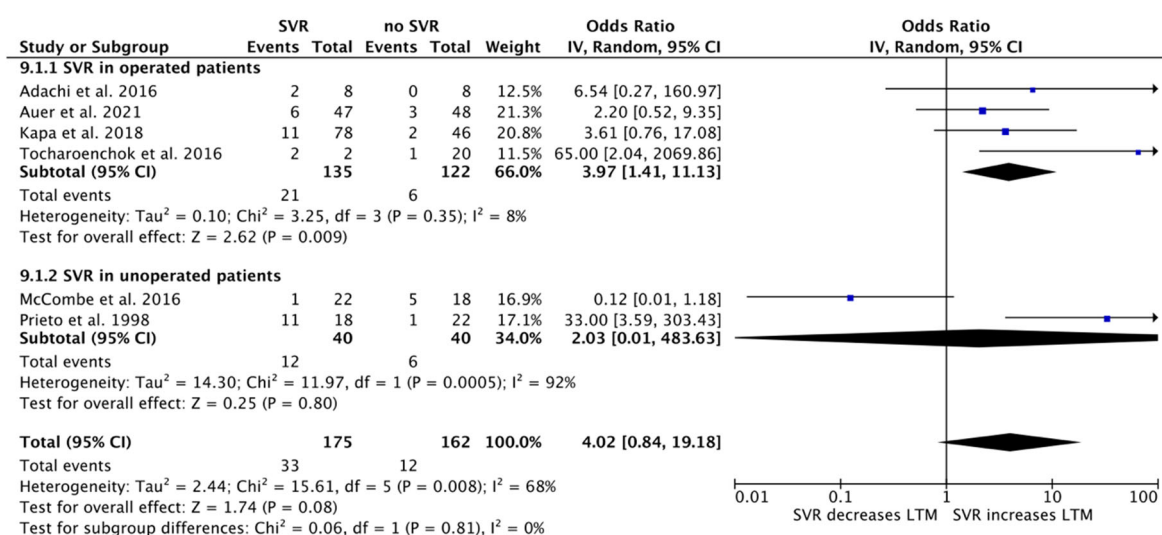


Figure S1. Sensitivity analysis for systemic valve regurgitation.

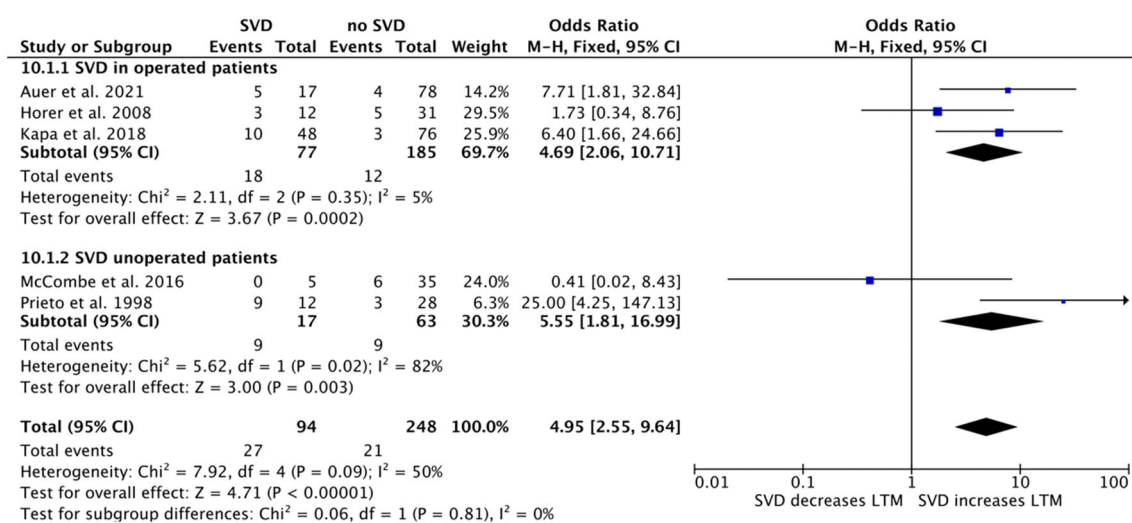


Figure S2. Sensitivity analysis for systemic ventricle dysfunction.

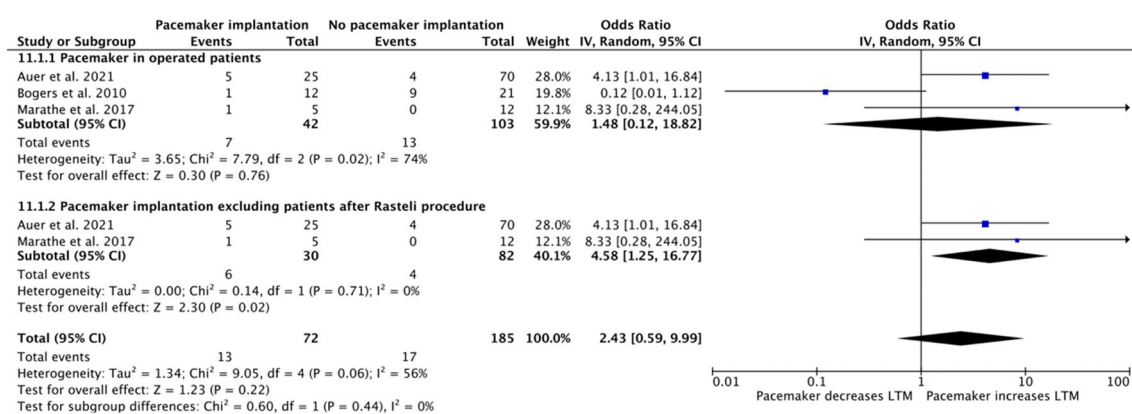


Figure S3. Sensitivity analysis for pacemaker implantation.