

Supplementary Figures

Dietary Counseling Outcomes in Patients with Lung Cancer in an Upper-Middle-Income Country: An Open-Label Randomized Controlled Trial

Busyamas Chewaskulyong ^{1,*}, Haritchanan Malairungsakul ², Supawan Buranapin ³,
Panas Jesadaporn ⁴, Thanika Ketpueak ¹, Thatthan Suksombooncharoen ¹ and Chaikut Charoentum ¹

¹ Division of Medical Oncology, Department of Internal Medicine, Faculty of Medicine, Chiang Mai University, Chiang Mai 50200, Thailand; thanika.k@cmu.ac.th (T.K.); thatthan.s@cmu.ac.th (T.S.); chaikut.charoentum@cmu.ac.th (C.C.)

² Division of Gastroenterology, Department of Internal Medicine, Faculty of Medicine, Chiang Mai University, Chiang Mai 50200, Thailand; haritchm@gmail.com

³ Division of Endocrinology and Metabolism, Department of Internal Medicine, Faculty of Medicine, Chiang Mai University, Chiang Mai 50200, Thailand; supawan.b@cmu.ac.th

⁴ Division of Geriatric Medicine, Department of Internal Medicine, Faculty of Medicine, Chiang Mai University, Chiang Mai 50200, Thailand; panas.j@cmu.ac.th

* Correspondence: bchewask@gmail.com; Tel.: +66-53935482-5

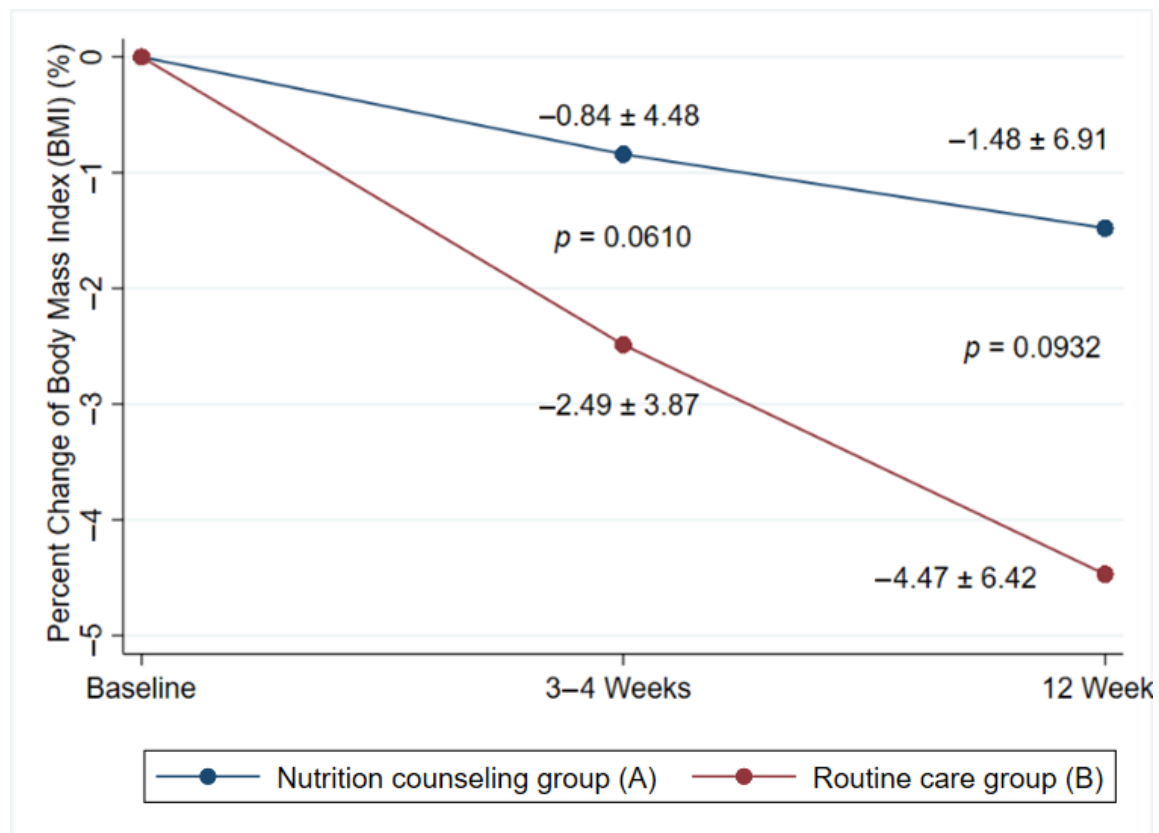


Figure S1: Percent Change of Body Mass Index (BMI).

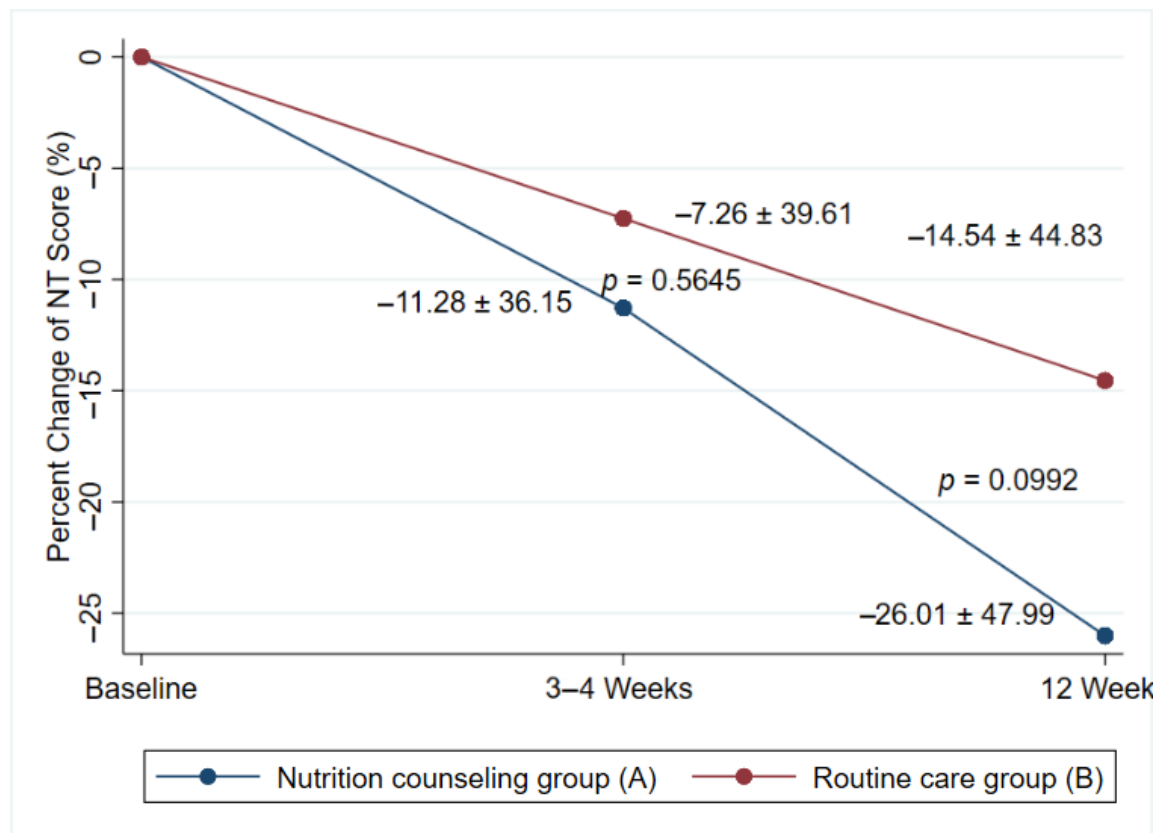


Figure S2: Percent Change of Nutrition Score.

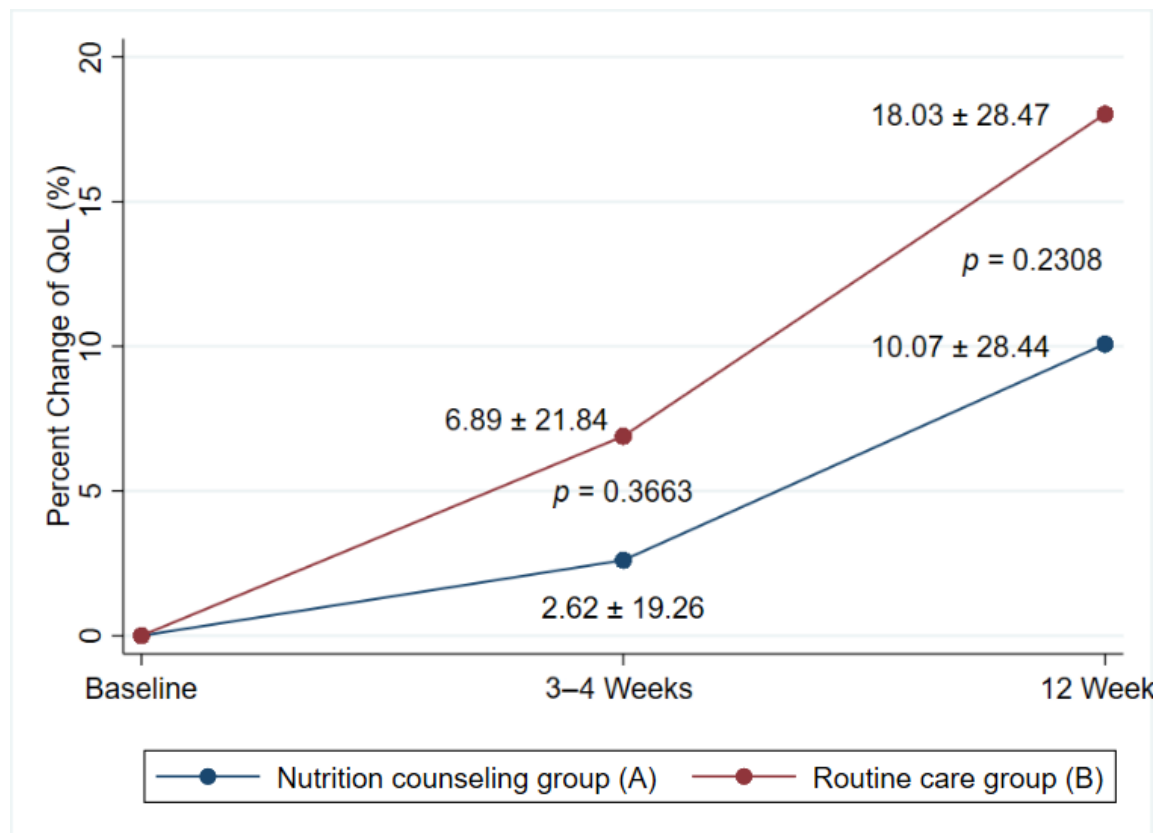


Figure S3: Percent Change of Quality of Life.

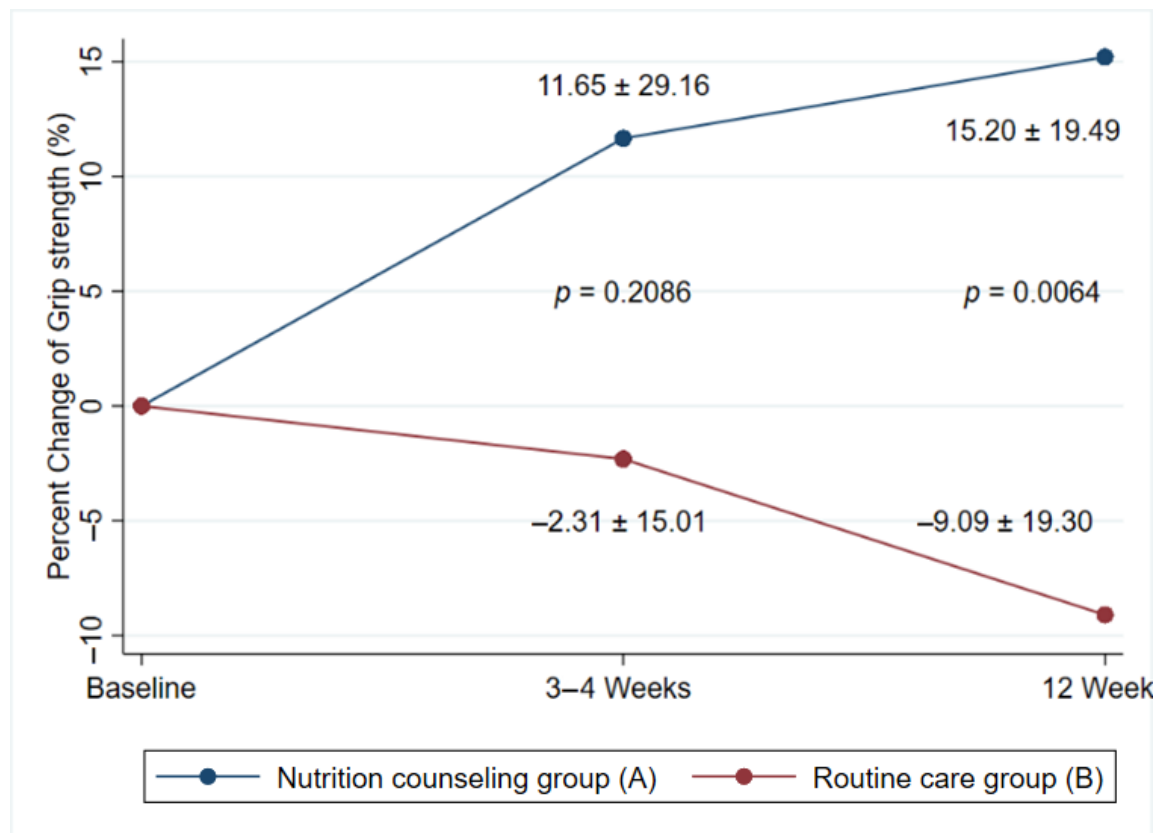


Figure S4: Percent Change of Grip Strength.

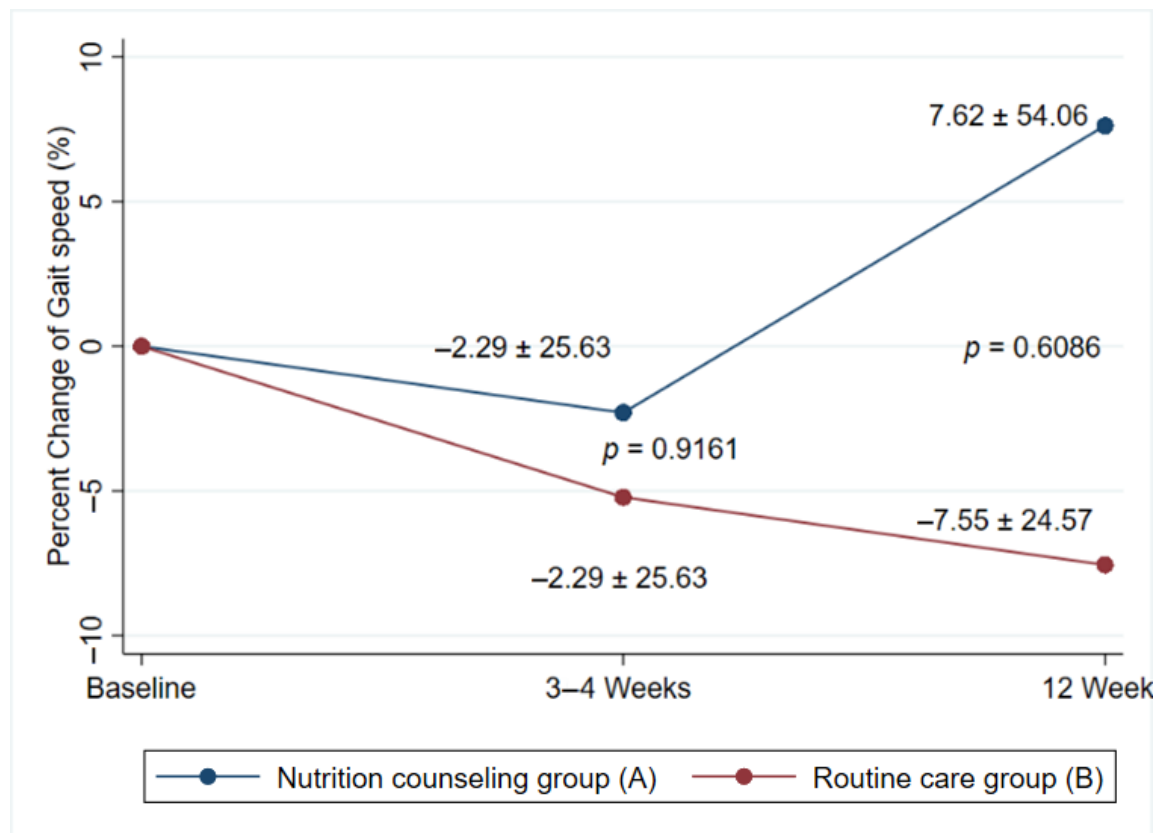


Figure S5: Percent Change of Gait Speed.

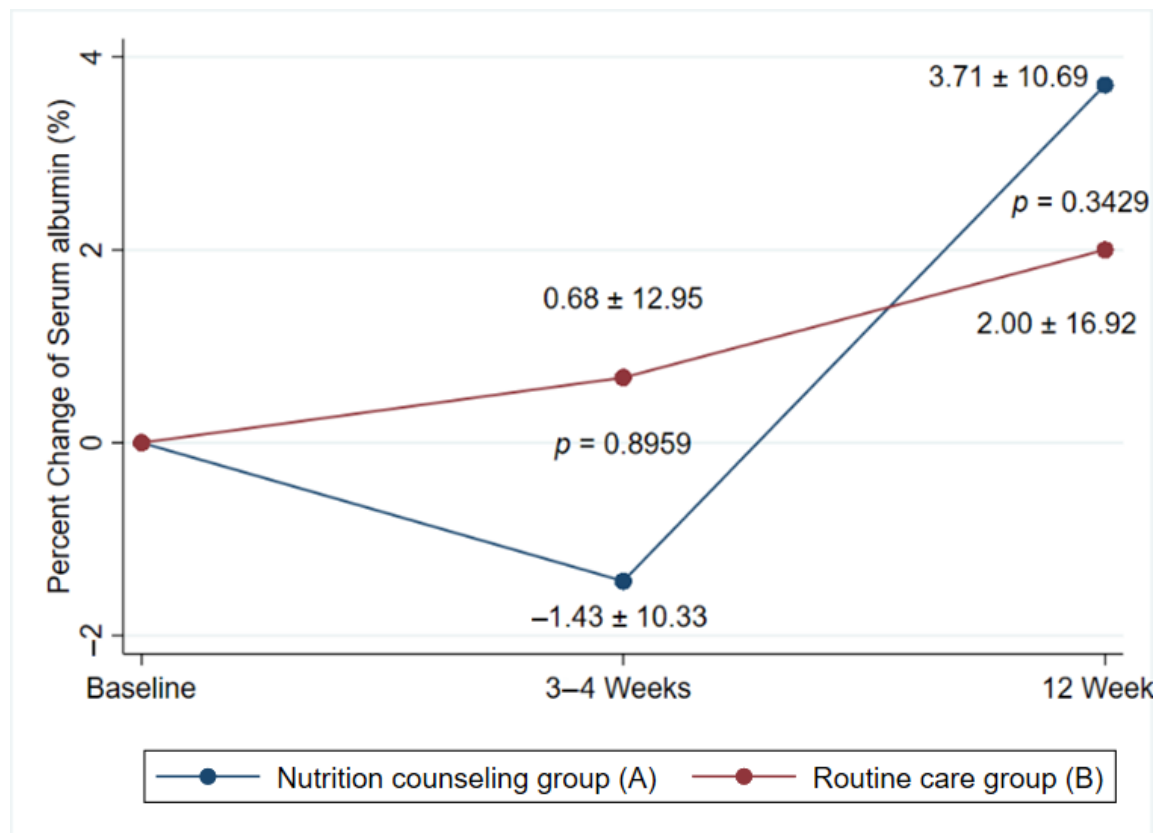


Figure S6: Percent Change of Serum Albumin.

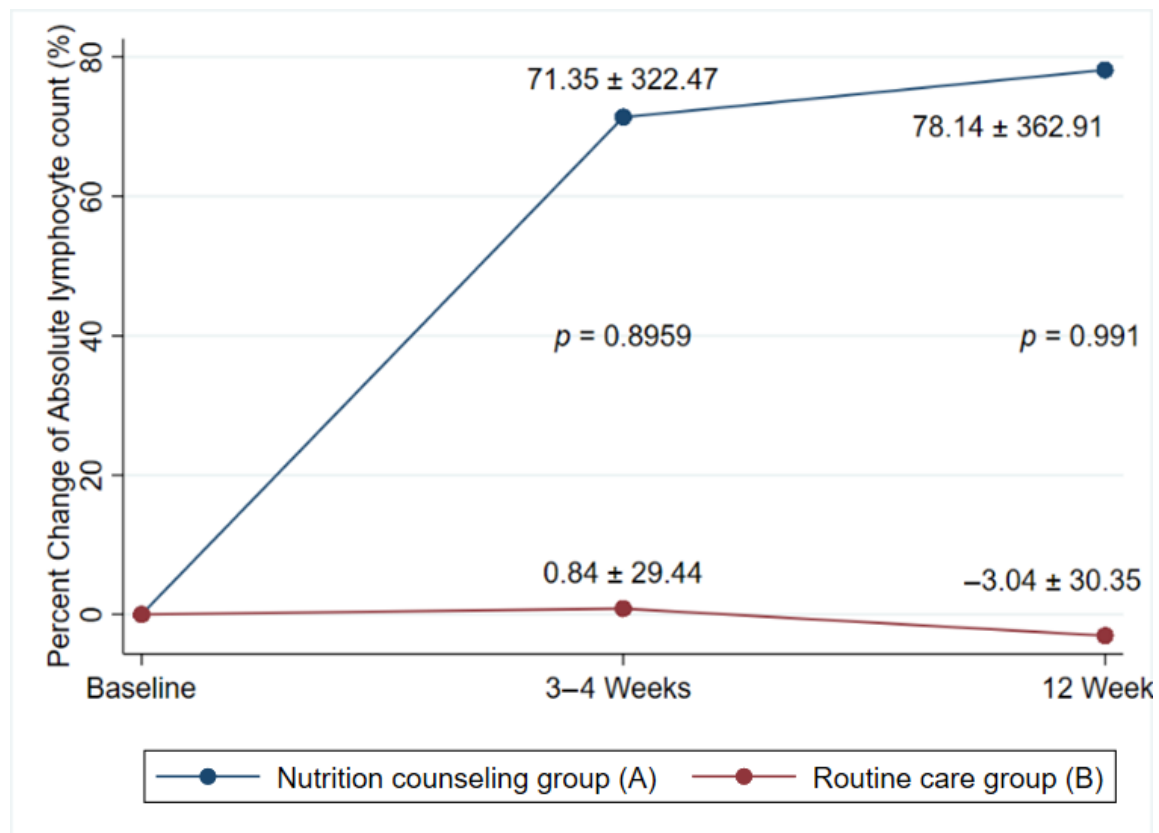


Figure S7: Percent Change of Absolute Lymphocyte Count.

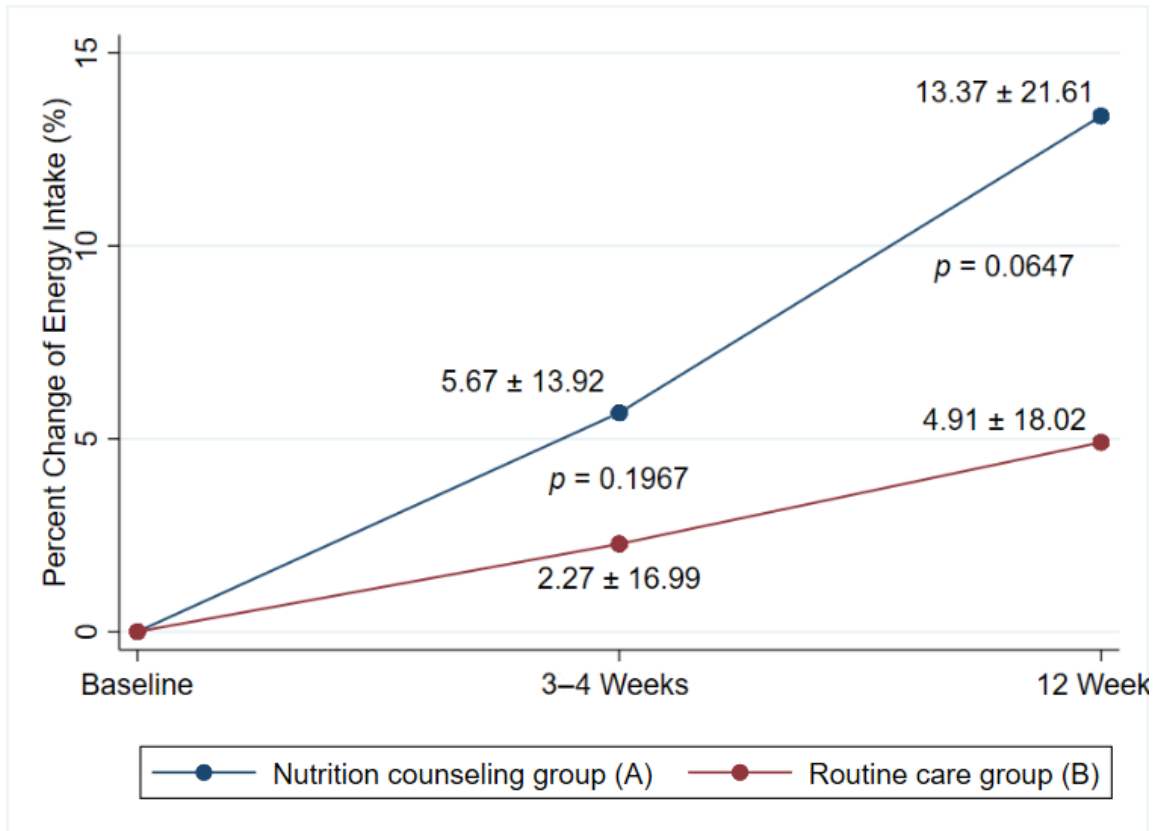


Figure S8: Percent Change of Energy Intake.

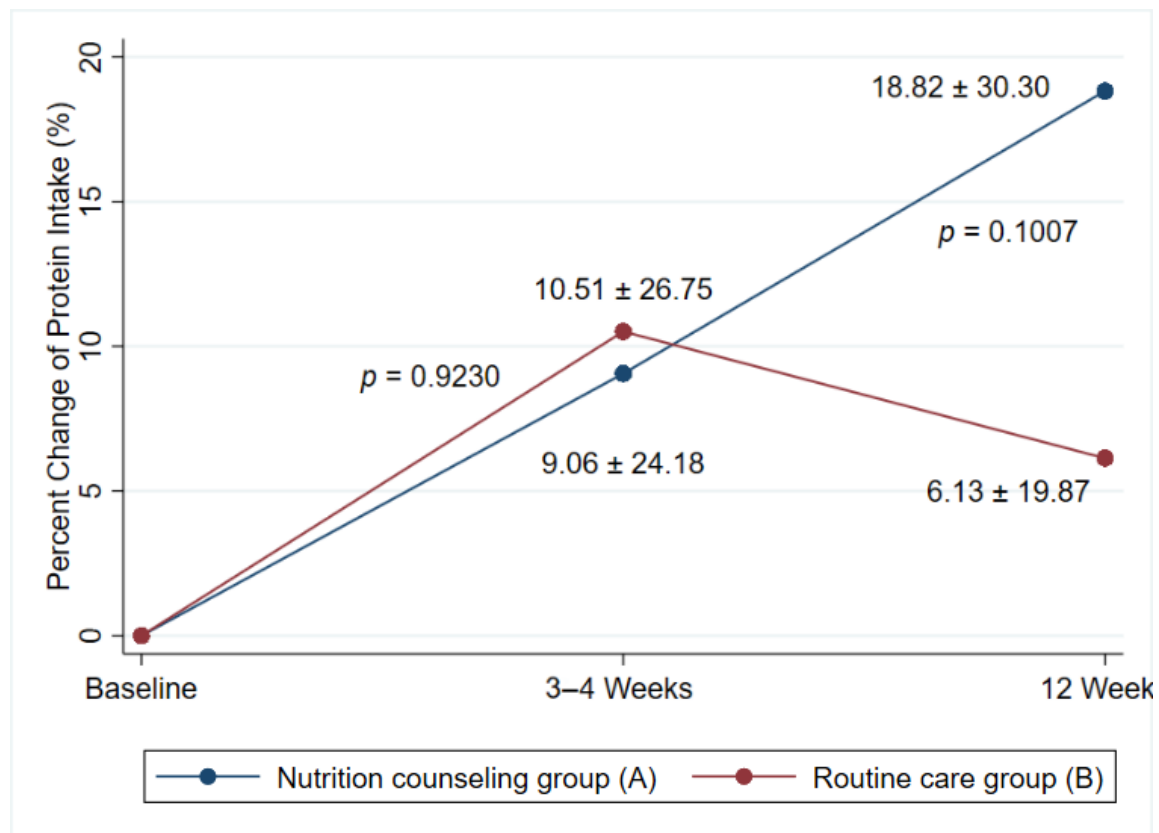


Figure S9: Percent Change of Protein Intake.

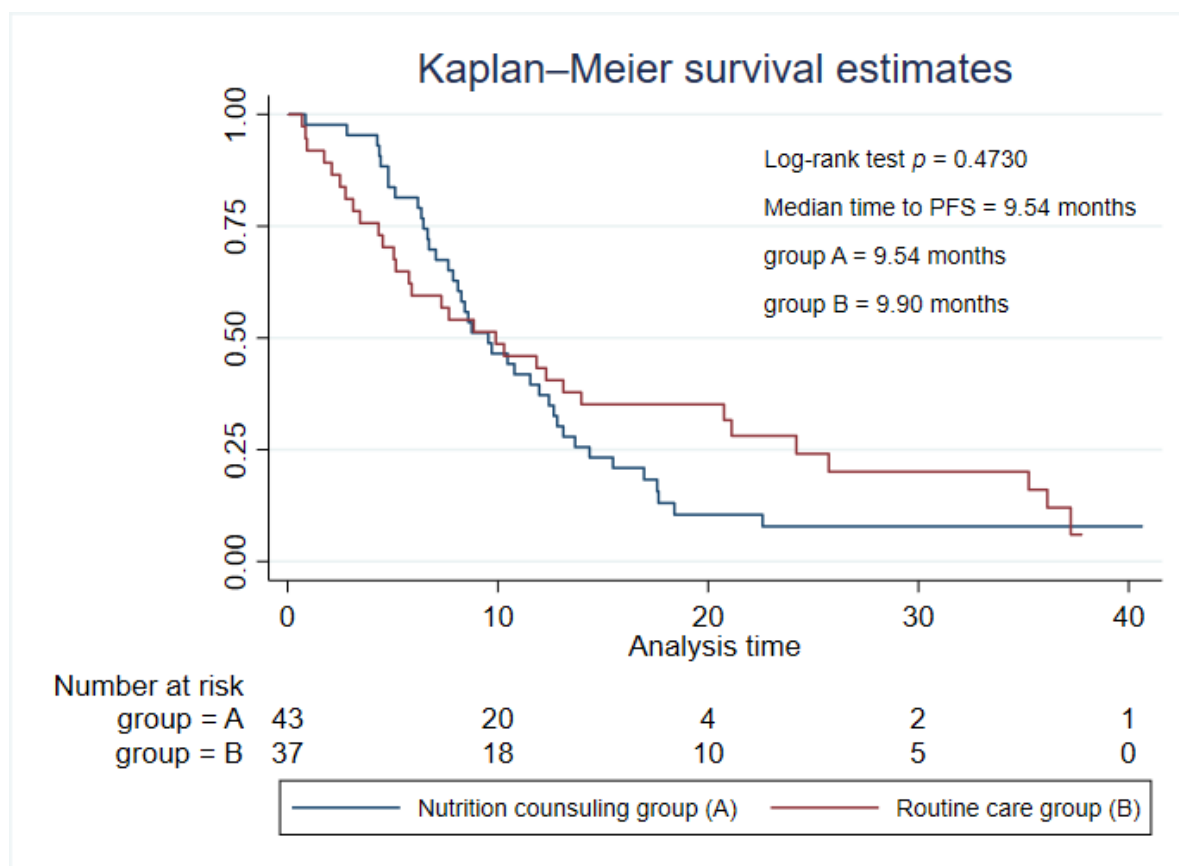


Figure S10: Progression-free Survival.

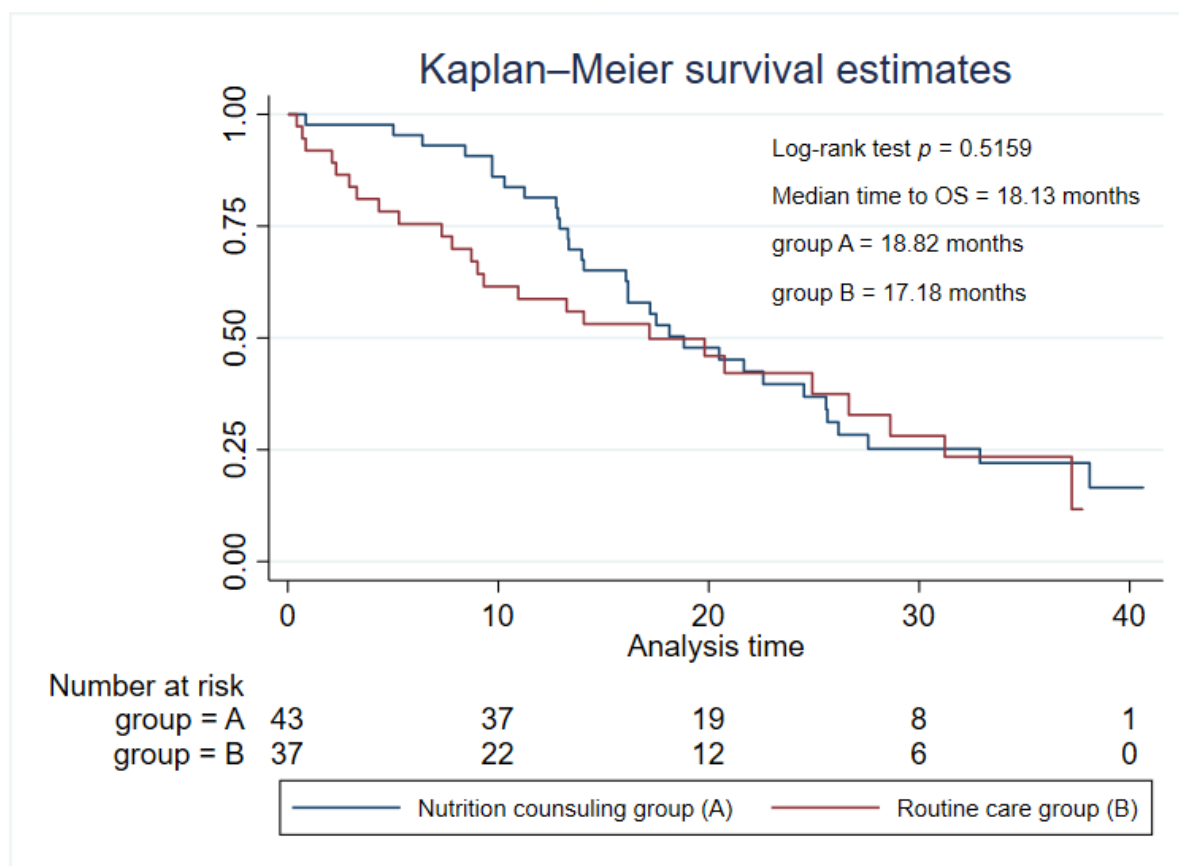


Figure S11: Overall Survival.