

Supplementary Materials for Article

## Molecular and functional cargo of plasma-derived exosomes in patients with Hereditary Hemorrhagic Telangiectasia

**Table S1:** Curaçao criteria met by individual patients of the studied HHT cohort at the time of their first consultation in our department, on which diagnosis was based.

ID	Curaçao criteria				Number of fulfilled criteria	Genetic testing
	Epistaxis	Telangiectasia	Family history	AVM		
#1	x	x	x	-	3	ENG
#2	x	x	x	-	3	SMAD4
#3	x	x	x	-	3	-
#4	x	x	x	PUL	3	-
#5	x	x	x	-	4	-
#6	x	x	x	-	3	-
#7	x	x	x	-	3	-
#8	x	x	x	-	3	-
#9	x	x	x	-	3	-
#10	x	x	unclear	-	2,	-
#11	x	x	x	-	3	-
#12	x	x	unclear	-	2	-
#13	x	x	x	-	3	-
#14	x	x	x	HEP	4	-
#15	x	x	x	-	3	-
#16	x	x	x	HEP	4	-
#17	x	x	x	-	3	-
#18	x	x	x	-	3	-
#19	x	x	x	-	3	-
#20	x	x	x	-	3	-

AVM = arterio-venous malformations, PUL = pulmonary, HEP = hepatic

**Table S2:** Detailed interventions for individual patients of the studied HHT cohort.

ID	Interventions						Total
	Laser therapy	Septal splint	Cauterization	Complete nasal closure (Young's procedure)	Clipping A. sphenopalatina	Ligation A. carotis externa, tracheostomy	
#1	7 (nose, lips)	-	-	-	-	-	7
#2	12 (nose)	-	-	-	-	-	12
#3	10 (nose, lips)	1	-	-	-	-	11
#4	6 (nose)	-	-	-	-	-	6
#5	2 (nose, face)	2	-	-	-	-	4
#6	47 (nose)	-	1	-	-	-	48
#7	36 (nose, face)	-	3	2	-	-	41
#8	1 (face)	-	-	-	-	-	1
#9	-	-	-	-	-	-	0
#10	16 (nose)	1	-	-	-	-	17
#11	-	1	-	2	-	-	3
#12	-	-	-	-	-	-	0
#13	-	-	-	-	-	-	0
#14	2 (nose, mouth)	2	4	-	1	-	9
#15	57 (nose)	1	-	-	-	-	58
#16	2 (nose)	-	-	-	-	-	2
#17	-	-	-	-	-	-	0
#18	26	4	1	-	1	2	34
#19	-	-	-	-	-	-	0
#20	-	-	-	-	-	-	0
<b>Total</b>	<b>224</b>	<b>12</b>	<b>9</b>	<b>4</b>	<b>2</b>	<b>2</b>	<b>253</b>

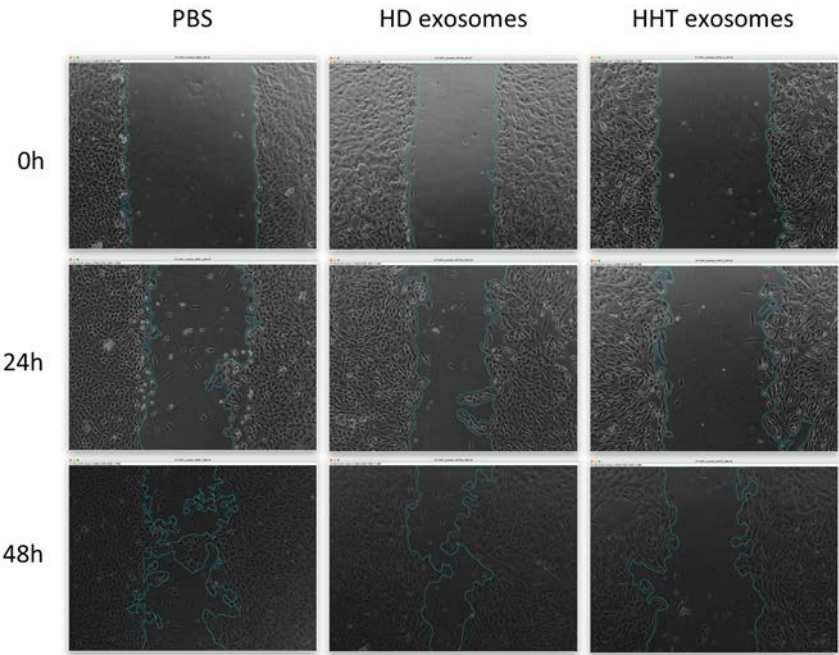


Figure S1: Migration of HUVECs after exosome incubation.