

Supplementary Material

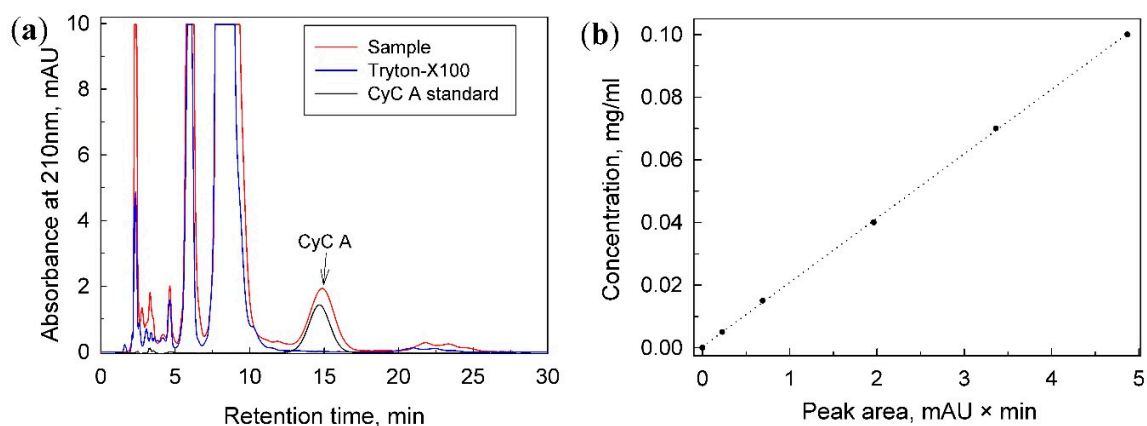


Figure S1. Representative chromatograms are present in section (a). Triton X-100 was used for liposome disruption and CyC A release. CyC A standard and Triton X-100 working solutions were diluted in acetonitrile. The calibration curve demonstrates a linear detection system response to concentration over the range 0.005 - 0.1 mg/mL, $R^2 = 0.9998$ (b).

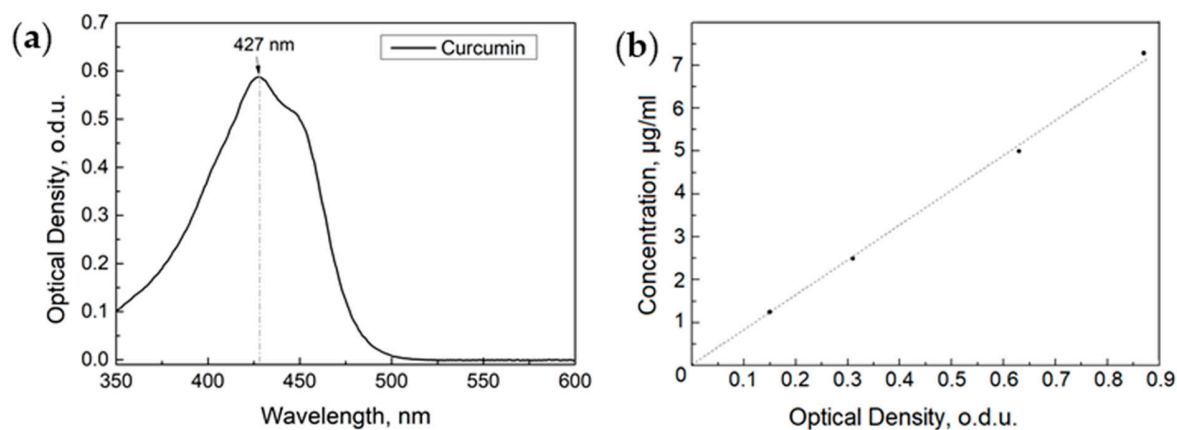


Figure S2. The absorption spectrum of curcumin, prepared in ethanol (0.2 mg/ml) and 40 times diluted in water/Triton X-100 (11:2 v/v) mixture (a). 4 different curcumin standard solutions were prepared within 1-7 µg/ml range and optical density values at 427 nm were plotted as a function of concentration (b). A linear dotted curve is a fitted mathematical curve. $R^2 = 0.9985$.

Table S1. Schirmer test results of each rabbit before CFA induction expressed in wetted length of ophthalmic strip.

Rabbit Eyes	Rabbit 1	Rabbit 2	Rabbit 3	Rabbit 4	Rabbit 5	Rabbit 6	Rabbit 7	Rabbit 8	Rabbit 9
Right eye OD, mm	11.5	8.5	7	10	3	6	12	7	6
Left eye OS, mm	15.5	6.5	6	4.5	3	4.5	7.5	6.5	4.5