

Supplementary Materials:

Dialysis patients' evaluation of lung edema at home using a mobile-phone tele-ultrasound application, a pilot study

Itamar Ben Shitrit, MPH, ^{a,b,c}, Aviya Kedmi, MD, ^{a,c}, Khaled El Haj, MD^c, Amit Kosto^{a,c}, Ofri Karni, MD^a, Sharon Einav, MD, MSc^d, Tomer Poleg^a, Ariel Avraham Hasidim, MD, MPH^{e,f}, Noa Bineth, MD^c, Tomer Gat, MD^{a,c}, Alla Shnaider, MD^g, Orli Barad^b, Lior Fuchs, MD^{a,c}

^a Joyce and Irving Goldman Medical School, Faculty of Health Sciences, Ben-Gurion University of the Negev, Beer-Sheva, Israel.

^b Clinical Research Center, Soroka University Medical Center, Faculty of Health Sciences, Ben-Gurion University of the Negev, Beer-Sheva, Israel

^c Medical Intensive Care Unit, Soroka University Medical Center, Faculty of Health Sciences, Ben-Gurion University of the Negev, Beer-Sheva, Israel.

^d Maccabi Healthcare System, Sharon Region, and Hebrew University Faculty of Medicine, Jerusalem, Israel

^e Department of Pediatrics A, Schneider Children's Medical Center of Israel, Petah Tikva, Israel

^f Sackler Faculty of Medicine, Tel Aviv University, Tel Aviv, Israel

^g Department of Nephrology, Soroka University Medical Center, Beer-Sheva 8457108, Israel

Figure S1 – The home device (Pulsenmore Ltd., Omer, Israel)



Figure S2 - "Zone 1" anterior chest wall position for self-scan



Figure S3- Quality score matrices

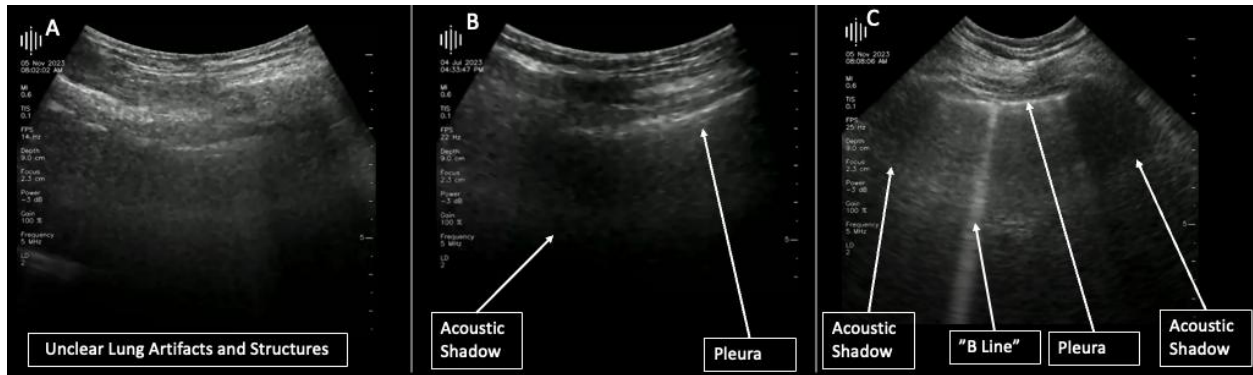


Figure S3 presents a visual representation of the scoring system used to evaluate lung ultrasound image quality. Panel A is assigned a non-reliable score due to the inability to interpret the image, as indicated by the unclear visualization of the pleura and ribs. Image B is given a reliable score, where the pleura is discernible, but the image clarity of the ribs or the pleura line is suboptimal, or there is only one visible rib with a pleura on both sides. Image C presents a highly reliable score, demonstrating an ideal ultrasound image with two ribs showing characteristic acoustic shadows and a clear, uninterrupted pleural line between them.