

Figure S1a.

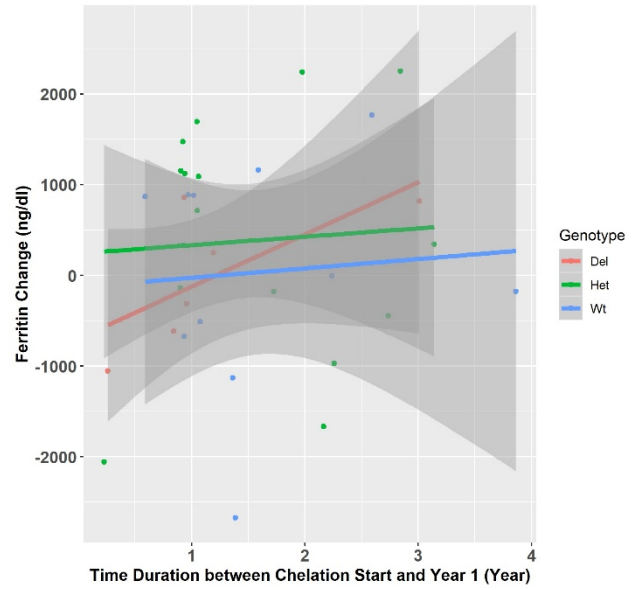


Figure S1b

Supplemental

Figure 1. Serum ferritin according to *GSTM1* genotype groups. S1a) Baseline serum ferritin is variable for similar transfusion burden and not significantly different in three genotype groups ($p=0.29$) S1b) Mean change in serum ferritin was not significantly different among the three different genotypes ($p=0.11$) but followed with minimal increase in WT group as compared to *GSTM1* homozygous and heterozygous deletion groups.

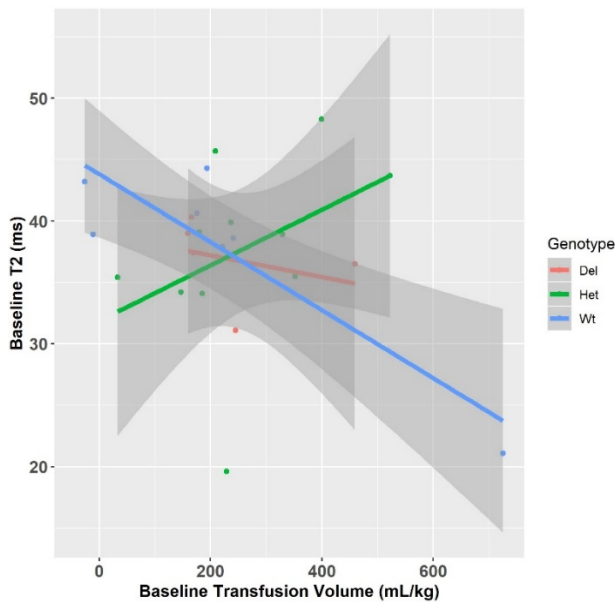


Figure S2a.

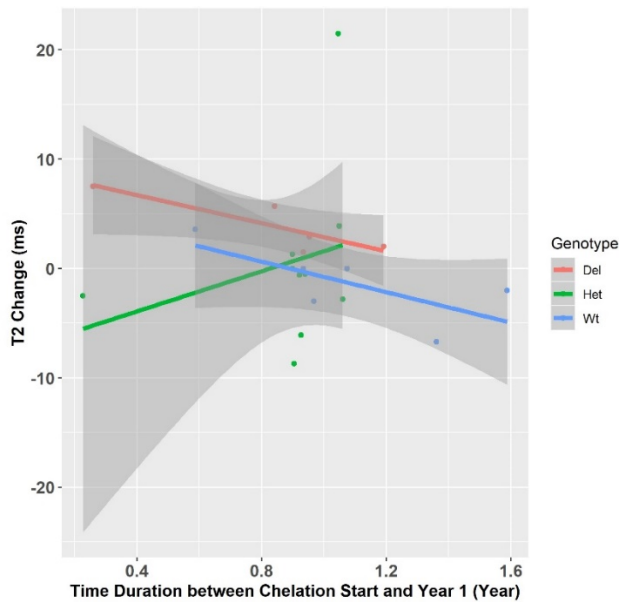


Figure S2b.

Supplemental Figure 2. Heart T2* according to *GSTM1* genotypes. S2a) Baseline heart T2* was not significantly different among the three different genotype groups. S2b) Mean change in heart T2* was not significantly different three different genotype groups ($p=0.11$).