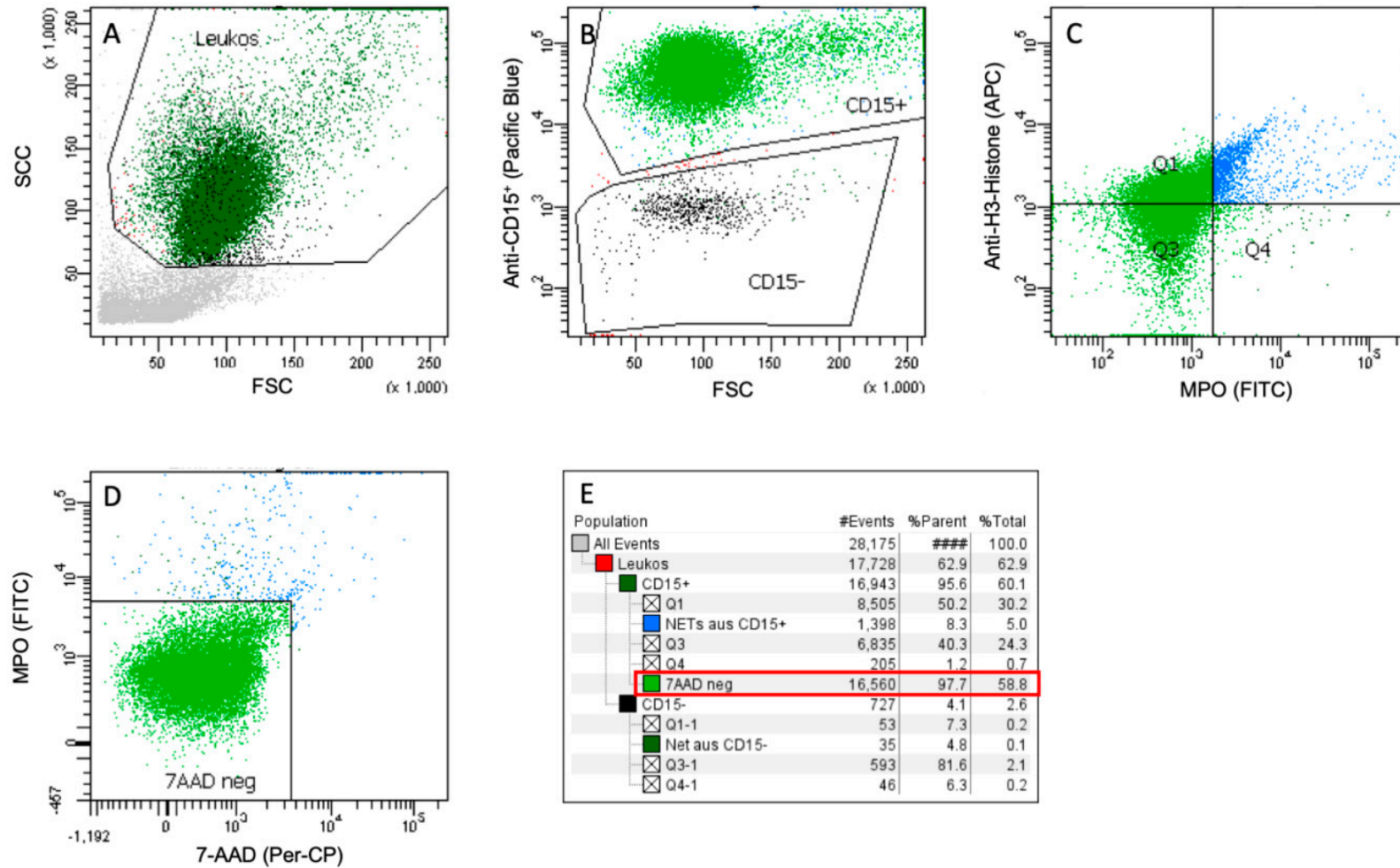
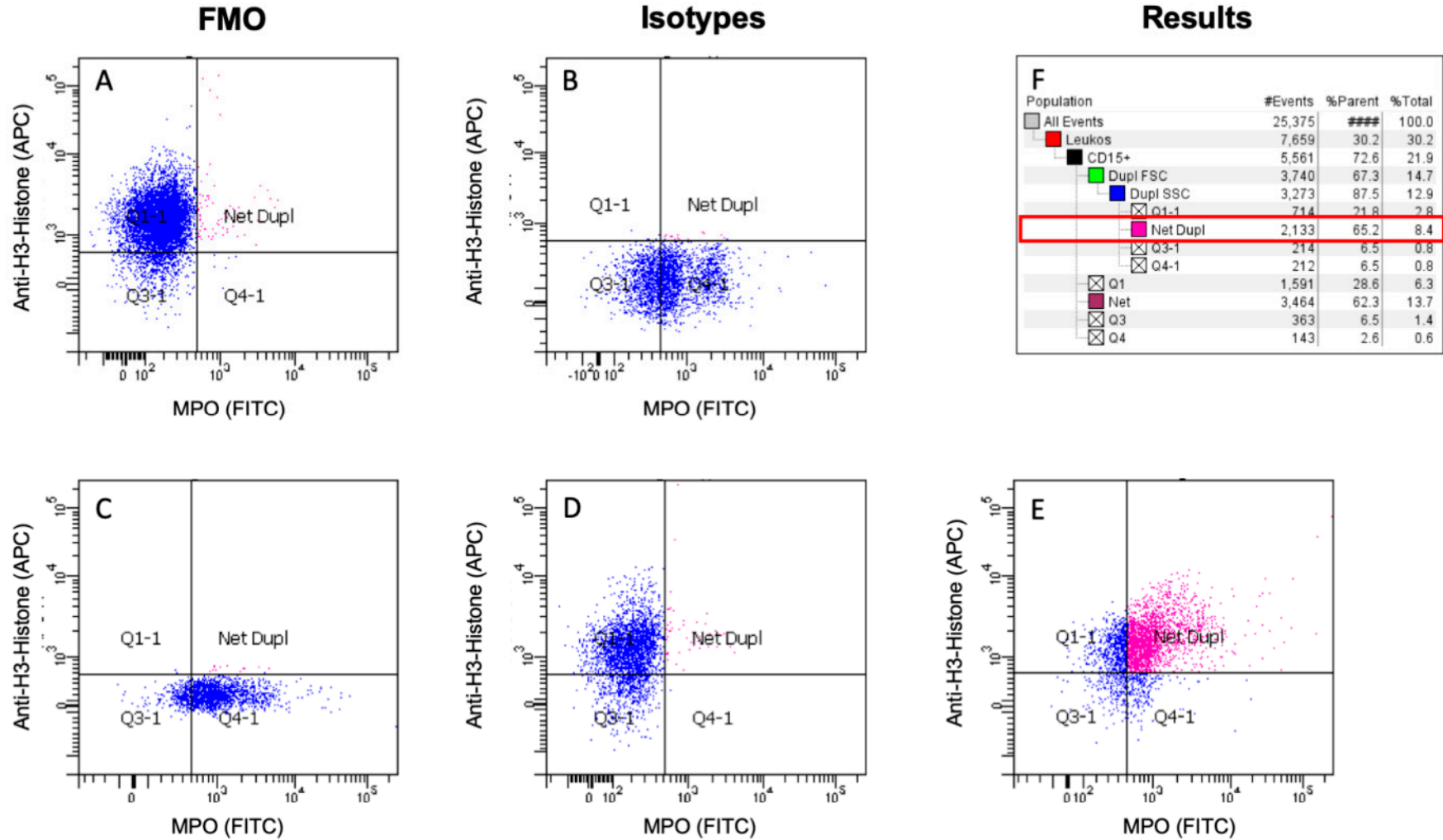


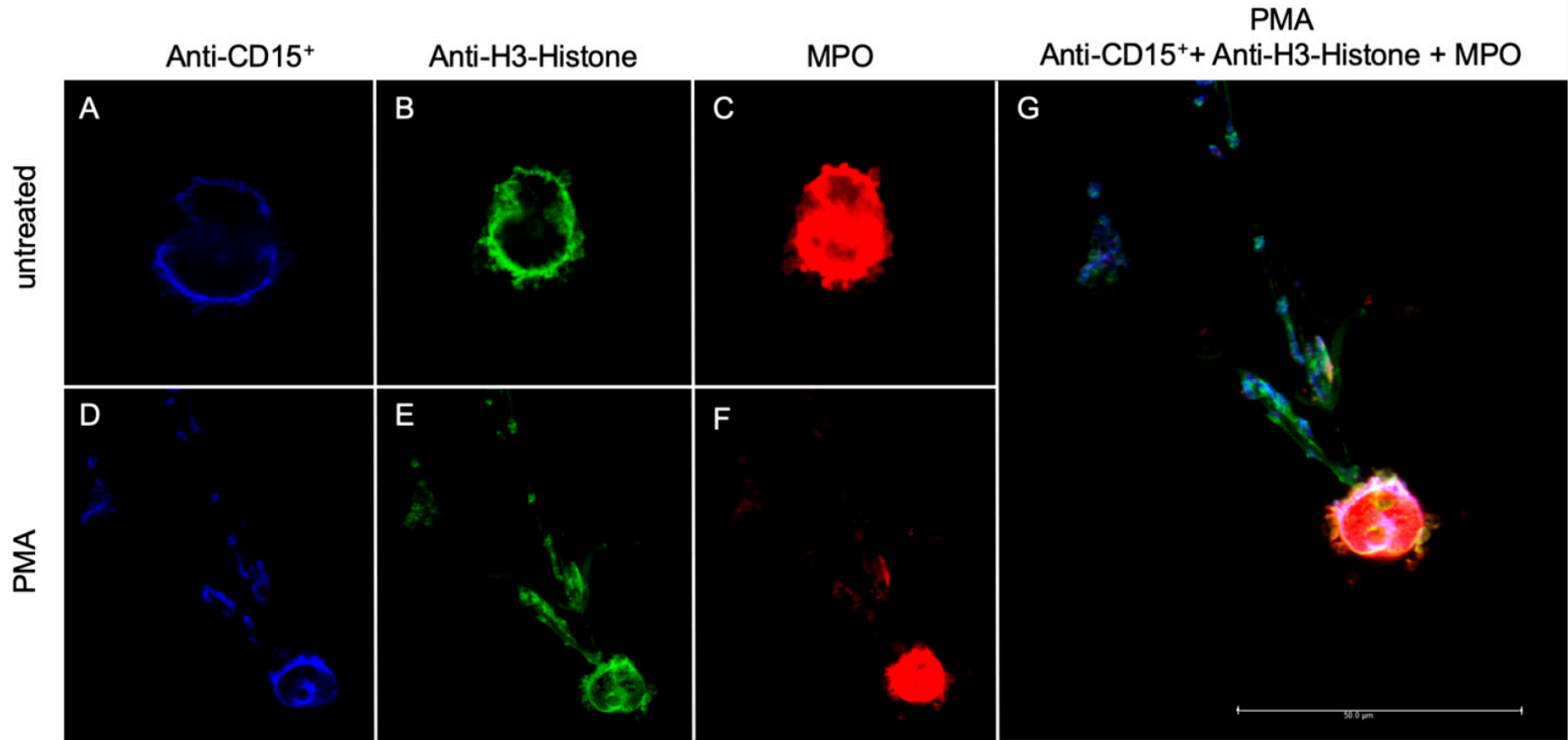
Supplement 1 Demonstration of preliminary tests with 7-AAD in order to prove vitality of neutrophils (red box). First, leucocytes were targeted (A) and identified as CD15⁺ cells (B). Then, MPO- and anti-H3-Histone-positive cells were defined as surrogates for NETs (C). 7-AAD negative cells represent vital cells (D) and are quantified to a high proportion (E). Abbreviations: APC: Allophycocyanin; FITC: Fluorescein isothiocyanate; FSC: Forward Scatter; MPO: Myeloperoxidase; NETs: Neutrophil Extracellular Traps; SSC: Side Scatter, 7-AAD: 7-aminoactinomycin.



Supplement 2 Comparison of FMO and isotype controls. FMO (A,C) and isotypes (B,D) show comparable gating results. PMA leads to a strong activation of NET release (E). Results are shown in percentage of gated neutrophils (F). Abbreviations: APC: Allophycocyanin; FITC: Fluorescein isothiocyanate; FMO: Fluorescence-minus-one; FSC: Forward Scatter; MPO: Myeloperoxidase; NETs: Neutrophil Extracellular Traps; PMA: phorbol 12-myristate 13-acetate; SSC: Side Scatter.



Supplement 3 Fluorescence microscopy of native and PMA stimulated neutrophils. Native neutrophils are shown in the upper row with marked stainings (A–C), while in the lower row, NET-releasing neutrophils are shown after PMA stimulation with the accordant stainings (D–F). NETs show a typical comet tail configuration. G displays the overlay of all staining antibodies. Abbreviations: MPO: Myeloperoxidase; NETs: Neutrophil Extracellular Traps; PMA: phorbol 12-myristate 13-acetate.



Supplement 4 Results of thrombelastography. Data are shown as median (IQR). Abbreviations: CFT: Clot Firmness Time; CT: Clotting Time; LI60: Lysis Index after 60 min; MCF: Mean Clot Firmness.

	Septic Shock		Cardiac Surgery		Major Abdominal Surgery		Control Patients	
EXTEM CFT (sec)	onset	44 (37.8-64.8)	Preop	55.5 (48.8-67.5)	Preop	54 (45.5-63.3)	Ctrl	60 (55.8-71.3)
	24 h	40 (36.8-68.3)	Postop	69.5 (56.5-82.5)	Postop	58 (47.8-72.3)		
	72 h	48 (40-55)	24 h	56.5 (48.5-62)	24 h	52 (48-62.5)		
			72 h	43.5 (41-46)	72 h	48 (40.5-55)		
EXTEM CT (sec)	onset	84 (76.3-97.5)	Preop	62.5 (58.8-67.5)	Preop	66 (60-69.3)	Ctrl	68 (65-78.3)
	24 h	78.5 (67.5-96.3)	Postop	80.5 (72.8-82)	Postop	70.5 (60.8-73)		
	72 h	81 (69-100)	24 h	71.5 (67.3-79.8)	24 h	68 (57-77)		
			72 h	73.5 (61-87)	72 h	77 (62.5-85.5)		
EXTEM LI60 (%)	onset	95 (91.8-97)	Preop	93 (90.5-94.5)	Preop	92.5 (91-94.3)	Ctrl	92.5 (89.5-94-3)
	24 h	95 (93.5-99)	Postop	94.5 (93.8-97)	Postop	94.5 (93-96)		
	72 h	95 (94-97)	24 h	91 (90-95)	24 h	93 (90-93.8)		
			72 h	90 (90-92.3)	72 h	91 (88.5-93)		
EXTEM MCF (mm)	onset	73.5 (65.8-80)	Preop	67.5 (65-71.3)	Preop	67 (66.3-73)	Ctrl	68 (64.5-70)
	24 h	74.5 (63.8-77)	Postop	64.5 (60.8-69.5)	Postop	68 (66.5-71.3)		
	72 h	74 (69-77)	24 h	69 (65.8-70.5)	24 h	70 (67-71)		
			72 h	75 (72-76.3)	72 h	72 (70-73.5)		
INTEM CFT (sec)	onset	52.5 (39.5-82.3)	Preop	58.5 (44-66.5)	Preop	55 (46-65)	Ctrl	66.5 (53-76.3)
	24 h	48 (37-71.3)	Postop	89 (72-114.5)	Postop	53 (50-64.5)		
	72 h	51 (46-62)	24 h	59 (50-65.3)	24 h	52 (46-66)		
			72 h	45 (41.8-47)	72 h	47 (42.5-55)		
INTEM CT (sec)	onset	197 (164.5-262.8)	Preop	181.5 (156-193.3)	Preop	186 (134-201.3)	Ctrl	189 (150.8-215.8)
	24 h	206.5 (174-238.3)	Postop	265 (211-323)	Postop	158 (142.8-169.8)		
	72 h	219 (192-293)	24 h	193 (161.3-205.8)	24 h	171 (153-195)		
			72 h	179 (151.3-206.5)	72 h	172 (153.5-215)		
INTEM LI60 (%)	onset	96 (92.5-98)	Preop	92 (90-93.5)	Preop	90.5 (89-92.3)	Ctrl	90.5 (88.5-93)

	24 h 72 h	96 (93.5-98) 96 (93-99)	Postop 24 h 72 h	93 (91.5-96) 90 (88-93) 90 (88-92)	Postop 24 h 72 h	93 (91-95) 91 (89.3-93) 90 (86-91)		
INTEM MCF (mm)	onset 24 h 72 h	71.5 (63.8-76) 71.5 (63.5-77.3) 72 (67-75)	Preop Postop 24 h 72 h	64.5 (62-68.5) 61 (56.5-62.5) 66.5 (63-68.3) 72 (68.8-74)	Preop Postop 24 h 72 h	65.5 (62-69.3) 66 (65-68) 66 (63-69) 68 (66.5-70.5)	Ctrl	66 (60.8-67)
FIBTEM CFT (sec)	onset 24 h 72 h	64 (46.5-164) 59.5 (41.5-103) 68 (51-120)	Preop Postop 24 h 72 h	137 (76-341.3) 285.5 (131.3-580.8) 121.5 (84.8-452) 51 (44-60.8)	Preop Postop 24 h 72 h	130 (71-272.5) 340.5 (197.5-627.5) 178 (108.5-308.3) 65 (55.5-76.5)	Ctrl	202 (111.5-362.8)
FIBTEM CT (sec)	onset 24 h 72 h	67 (62.3-71) 77.5 (69-96) 76 (66-92) 83 (73-93)	Preop Postop 24 h 72 h	60.5 (55.3-65) 74.5 (69.3-85.8) 70 (61.8-81.8) 68.5 (65.5-73.5)	Preop Postop 24 h 72 h	62 (57.5-69.3) 65.5 (55.5-71) 68 (61-78.5) 68 (58.5-79)	Ctrl	214472.6 (136124.2-296626.7)
FIBTEM LI60 (%)	onset 24 h 72 h	100 (99-100) 100 (100) 100 (99-100)	Preop Postop 24 h 72 h	100 100 100 100	Preop Postop 24 h 72 h	100 100 100 100	Ctrl	100 (100)
FIBTEM MCF (mm)	onset 24 h 72 h	35.5 (25-40) 35.5 (26-43.3) 33 (24-39)	Preop Postop 24 h 72 h	23 (18-26.3) 17 (14-22.3) 24 (20-28) 36 (33.8-40)	Preop Postop 24 h 72 h	23 (19.8-29) 21 (17.8-23) 25 (21.5-26.5) 33 (30-34)	Ctrl	21.5 (16.8-24)
NATEM CFT (sec)	onset 24 h 72 h	209 (164.5-388.5) 188 (120-344) 256 (155-543)	Preop Postop 24 h 72 h	144.5 (123-214.3) 202 (150-244) 220 (143.5-291.8) 172.5 (132.5-383.3)	Preop Postop 24 h 72 h	139.5 (106-150.3) 118.5 (87.8-201.5) 155 (131.5-236) 129.5 (94.3-220.3)	Ctrl	153.5 (143.3-185.8)
NATEM CT (sec)	onset	719 (529.5-1009)	Preop	629 (516.3-700.3)	Preop	529.5 (507.8-627.5)	Ctrl	639.5 (544.5-678.3)

	24 h 72 h	757 (561-889) 830 (546-1030)	Postop 24 h 72 h	643 (604.5-801.5) 619.5 (550.3-769) 603.5 (559.8-767)	Postop 24 h 72 h	474 (382-597.5) 611 (536-687) 497 (455-774.5)		
NATEM LI60 (%)	onset 24 h 72 h	99 (95-100) 99 (96.5-100) 99 (96.5-100)	Preop Postop 24 h 72 h	92.5 (89.2-95) 94 (91-95) 92 (90-96) 94.5 (91-98.3)	Preop Postop 24 h 72 h	91.5 (90-94.3) 95 (93-96.3) 92 (90-93.3) 92 (89-96)	Ctrl	92 (92-95)
NATEM MCF (mm)	onset 24 h 72 h	67 (56.5-73) 67 (53.5-78) 71 (55-75)	Preop Postop 24 h 72 h	58 (55.8-63.3) 56 (47-59.5) 60.5 (56-64.5) 70 (67-77)	Preop Postop 24 h 72 h	61.5 (56.8-66.5) 61 (56.3-66) 61 (55.5-64.5) 69 (64.5-72.5)	Ctrl	58.5 (56.8-62.3)

