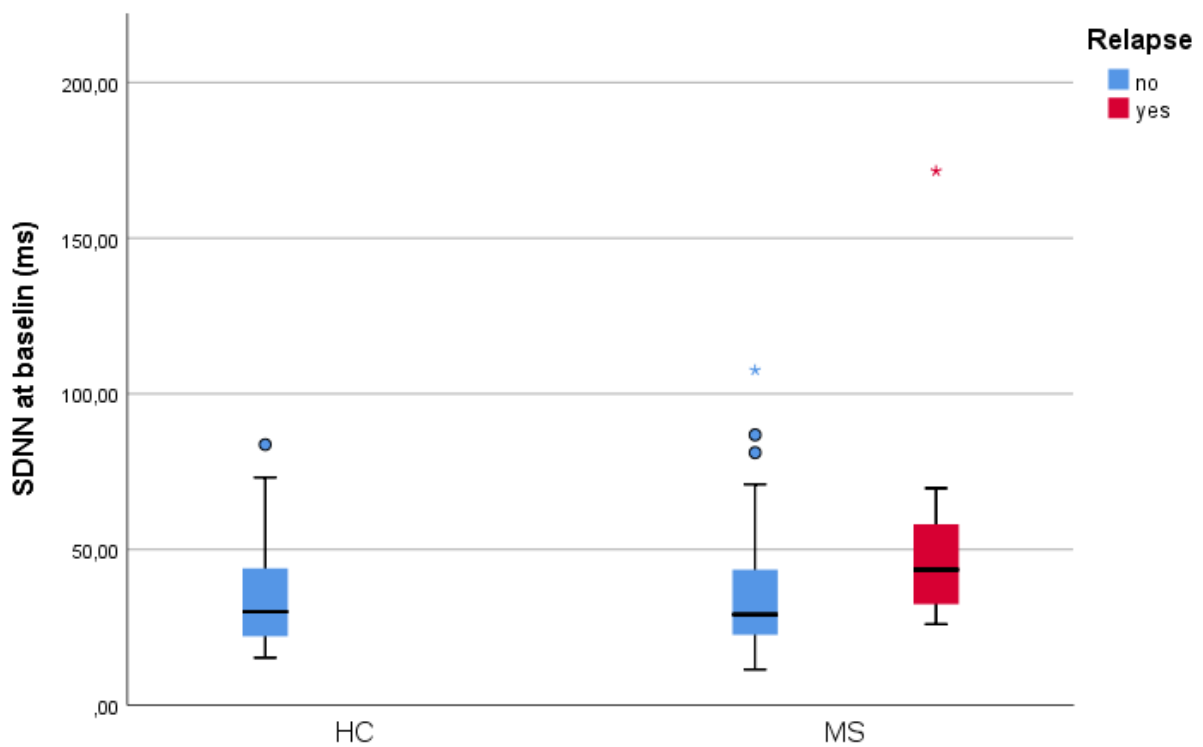




1 **Supplementary files**



2

3 **Figure S1.** Boxplot illustrating the distribution of SDNN at baseline between HC and MS participants,
4 depending on whether they had a self-reported relapse during the twelve-month follow-up
5 (Independent samples t test, $F = 0.190$, $p = 0.005$). HC: healthy controls. MS: multiple sclerosis. SDNN:
6 standard deviation of each normal-to-normal interbeat interval.

7