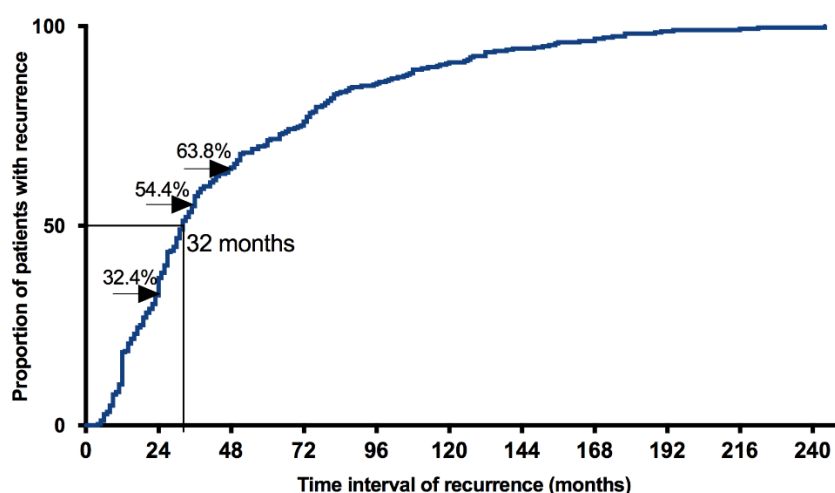


Article

# Recurrence patterns after surgery in patients with different endometriosis subtypes: a long-term hospital-based cohort study

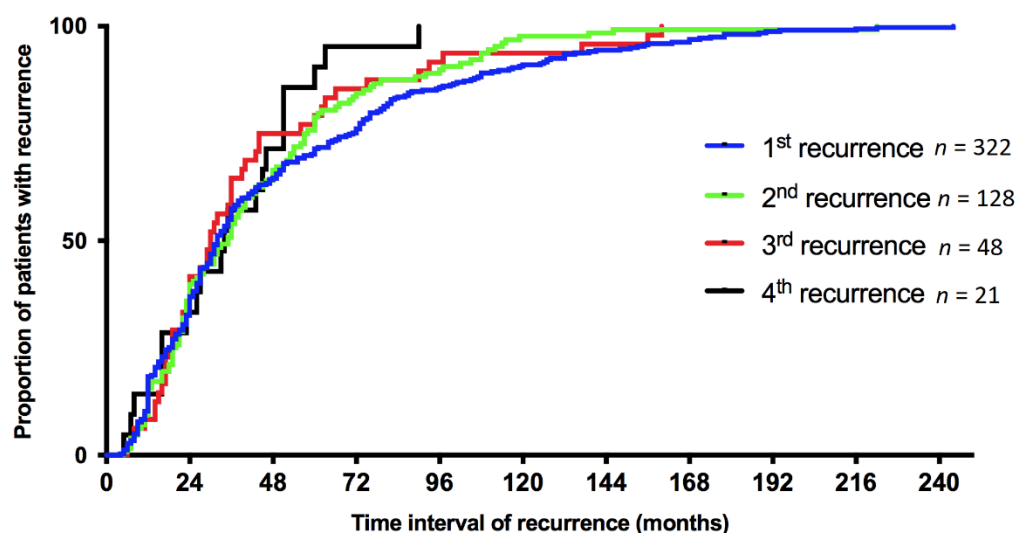
## Supplemental tables and figures

Figure S1. Time to first recurrence for all patients ( $n = 322$ )



**Legend Fig S1:** The median time to recurrence is 32 months. The black arrows show the percentage of patients with recurrence at 24 months, 36 and 48 months, respectively.

Figure S2. Time to first, second, third and fourth recurrence



**Legend Fig. S2:** The time from the first to second (1<sup>st</sup> recurrence), second to third (2<sup>nd</sup> recurrence), third to fourth (3<sup>rd</sup> recurrence) and fourth to fifth (4<sup>th</sup> recurrence) surgery is illustrated in different colors. The median time to the first, second, third and fourth recurrent surgery is 32, 35, 30 and 34 months, respectively. No statistically significant difference was observed.

**Table S1.** Evolution of endometriosis from second to third surgery.

<b>Second surgery \ Third surgery</b>	SUP ( <i>n</i> = 11); median time to recurrence (min-max)	OMA ( <i>n</i> = 48); median time to recurrence (min-max)	DIE ( <i>n</i> = 32); median time to recurrence (min-max)
SUP	6 (54.5%); 40.5 (9-125)	3 (10.7%); 112 (23-119)	7 (21.9%); 27 (7-61)
OMA	0 (0%)	25 (52.1%); 35 (8-222)	9 (28.1%); 29 (12-89)
DIE	5 (45.5%); 23 (13-70)	17 (35.4%); 43 (6-114)	15 (46.9%); 54 (12-146)
Unknown subtype	0	3 (6.2%); 21 (5-38)	1 (3.1%); 23

**Note:** In each cell, the number of cases evolving into SUP, OMA, DIE or unknown lesion subtype at recurrent surgery and their percentage is given. Abbreviations: SUP, superficial peritoneal endometriosis; OMA, ovarian endometrioma; DIE, deep infiltrating endometriosis; Min-Max, Minimum-Maximum

**Table S2.** Evolution of endometriosis from third to fourth surgery.

<b>Third surgery \ Fourth surgery</b>	SUP ( <i>n</i> = 8); median time to recurrence (min-max)	OMA ( <i>n</i> = 15); median time to recurrence (min-max)	DIE ( <i>n</i> = 13); median time to recurrence (min-max)
SUP	4 (50%); 29 (11-90)	1 (6.7%); 137	2 (15.4%); 46 (30-62)
OMA	1 (12.5%); 17	9 (60.0%); 17 (6-156)	5 (38.5%); 39 (27-93)
DIE	3 (37.5%); 29 (24-160)	5 (33.3%); 32 (15-63)	6 (46.2%); 40 (24-141)
Unknown	0	0	0

**Note:** In each cell, the number of cases evolving into SUP, OMA, DIE or unknown lesion subtype at recurrent surgery and their percentage is given. Abbreviations: SUP, superficial peritoneal endometriosis; OMA, ovarian endometrioma; DIE, deep infiltrating endometriosis; Min-Max, Minimum-Maximum

