



1 *Supplementary materials*

2 **Gender, albuminuria and chronic kidney disease**
3 **progression in treated diabetic kidney disease**

4 **Beatriz Fernandez-Fernandez^{1,2}, Ignacio Mahillo¹, Jinny Sanchez-Rodriguez^{1,2}, Sol Carriazo^{1,2},**
5 **Ana B Sanz^{1,2}, Maria Dolores Sanchez-Niño^{1,2} and Alberto Ortiz^{1,2*}**

6 ¹ IIS-Fundacion Jimenez Diaz-Universidad Autonoma de Madrid and Fundacion Renal Iñigo Alvarez de
7 Toledo-IRSIN, Madrid, Spain

8 ² REDINREN, Madrid, Spain

9 * Correspondence: aortiz@fjd.es; Tel.: +91-5550-48-00

10

Table S1. Baseline medications; n (%).

Medication	Total n=261	Men n=170	Women n=91	P
RAS blockade	246 (94.3)	162 (95.3)	84 (92.3)	0.48
ACE inhibitor	107(40.6)	72 (42.4)	35 (38.5)	0.63
ARB	170(65.1)	115 (67.6)	55 (60.4)	0.33
Anti-aldosterone	15 (5.7)	11 (6.5)	4 (4.4)	0.68
Diuretics	160 (61.3)	105 (61.8)	55 (60.4)	0.94
Statins	217 (83.1)	140 (82.4)	77 (84.6)	0.77
Pentoxifylline	4 (1.5)	3 (1.8)	1 (1.1)	1
Any vitamin D	101 (38.7)	67 (39.4)	34 (37.4)	0.74
Phosphate binders	32 (12.3)	18 (10.6)	14 (15.4)	0.35

11 RAS: renin-angiotensin syndrome; ACE angiotensin converting enzyme; ARB: angiotensin receptor blocker.

12

13

Table S2. Key baseline laboratory values.

Laboratory value	n	Total	Men	Women	p
Leucocytes (10 ³ /ul)	261	8302±2720	8283±2244	8297±3497	0.56
Hemoglobin (g/dl)	261	13.37±1.73	13.79±1.69	12.57±1.52	0.000
Mean corpuscular volume (fl)	261	90.4 [87.3-93.9]	90.5 [87.9-93.4]	90 [85.7-93.4]	0.23
Transferrin saturation (%)	257	22 [17-29]	24 [18-30]	20 [18-26]	0.003
Ferritin (ng/ml)	259	84 [48.5-178.5]	103 [53-188.5]	70 [32.5-140.2]	0.009
Vitamin B12 (pg/ml)	234	412 [307-560]	400 [307-511]	431 [295-572]	0.5
Folic Acid (pg/ml)	229	7.11 [4.78-10.3]	6.65 [4.73-9.47]	7.86 [5.13-11.66]	0.024
Glucose (mg/dl)	261	143±54	132 [109-166]	133 [101-173]	0.90
HbA1C (%)	260	7.6±1.36	7.63±1.32	7.57±1.4	0.71
Uric acid (mg/dl)	260	6.58±1.67	6.72±1.54	6.334±1.88	0.056
Albumin (g/dl)	259	4.11±0.38	4.2±0.6	4.1±0.4	0.49
Total Cholesterol (mg/dl)	261	156.8±38.4	152.9±36.6	155±39.5	0.017
LDL Cholesterol (mg/dl)	256	85±31	81±32.5	79±34	0.86
HDL Cholesterol (mg/dl)	256	45±13	40±12	48±19	0.000
Triglycerides (mg/dl)	261	142±103	121.5±73	121±68	0.81
CRP (mg/dl)	149	0.28 [0.11-0.75]	0.25[0.07-0.66]	0.35[0.14-1.1]	0.21
Sodium (mmol/L)	260	139.59±2.98	139.5±3.05	139.7±2.8	0.65
Potassium (mmol/L)	260	4.65±0.47	4.65±0.46	4.64±0.47	0.76
Total CO ₂ (mmol/l)	229	26.90±3.88	27.04±3.95	26.65±3.75	0.38
Diuresis (mL)	244	1855.7±592.6	1918.2±628.8	1732.3±494.6	0.022
Urinary Sodium (mmol/24h)	228	154±69	164.3±71.4	136.8±62.5	0.0037
Urinary Potassium (mmol/24h)	228	61.58±23.38	64.82±24.55	55.23±19.54	0.0035
Serum calcium corrected (mg/dl)	260	9.39±0.43	9.37±0.41	9.43±0.47	0.27
Serum phosphate (mg/dl)	258	3.64±0.56	3.60±0.58	3.72±0.53	0.39
PTH (pg/ml)	254	57.5 [39.6-92.6]	56.7 [35.2-92.15]	59.5 [42.35-98.9]	0.18
Serum magnesium (mg/dl)	239	1.9±0.43	1.92±0.27	1.88±0.25	0.29
1.25 (OH) ₂ Vitamin D (pg/mL)	141	30.1±11.1	30.2±11.4	30.1±10.4	0.99
25 OH Vitamin D (ng/ml)	255	18.2±10.6	19.08±9.24	16.53±12.70	0.0002
Alkaline phosphatase (UI/l)	260	88.1±41.0	83.28±29.98	97.17±55.83	0.0045
Urinary calcium (mg/24h)	221	48.15 [27.22-107.95]	48.37 [28-111.12]	48.9 [25.5-98.1]	0.56
FE calcium (%)	232	0.77 [0.37-1.19]	0.73 [0.38-1.18]	0.88 [0.36-1.3]	0.28
Urinary phosphate (mg/24h)	221	621.09±252.81	670.02±264.49	521.89±193.84	<0.0001
FE phosphate (%)	229	22.4±11.5	12.5±12.5	20.28±8.91	0.075
Urinary magnesium (mg/24h)	222	72.12±41.7	77.58±45.23	60.96±30.78	0.0008
FE Mg magnesium (%)	229	5.08±3.53	5.20±3.88	4.86±2.71	0.69

14 CRP: C reactive protein; UACR: urinary:albumin creatinine ratio; SBP: systolic blood pressure; ; FE:
 15 fractional excretion.

16 **Table S3a.** Multivariate model for prediction of rapid progression in women, adding UACR to the
 17 best multivariate model.

Variable	Coef.	OR	95% CI	P
Folic acid (pg/ml)	-0.192	0.826	(0.587-0.978)	0.121
SBP (mmHg)	0.078	1.082	(1.030-1.161)	0.000
UACR (mg/g)	0.001	1.001	(1.046-3.521)	0.242
FE Mg (%)	-0.478	0.620	(0.372-0.918)	0.020
Uric Acid (mg/dl)	0.607	1.835	(1.046-3.521)	0.035
Constant	-14.014			0.009

18 UACR: urinary:albumin creatinine ratio; SBP: systolic blood pressure; FE: fractional excretion.

19

20 **Table S3b.** Multivariate model for prediction of rapid progression in women replacing folic acid
 21 by UACR as a predictor.

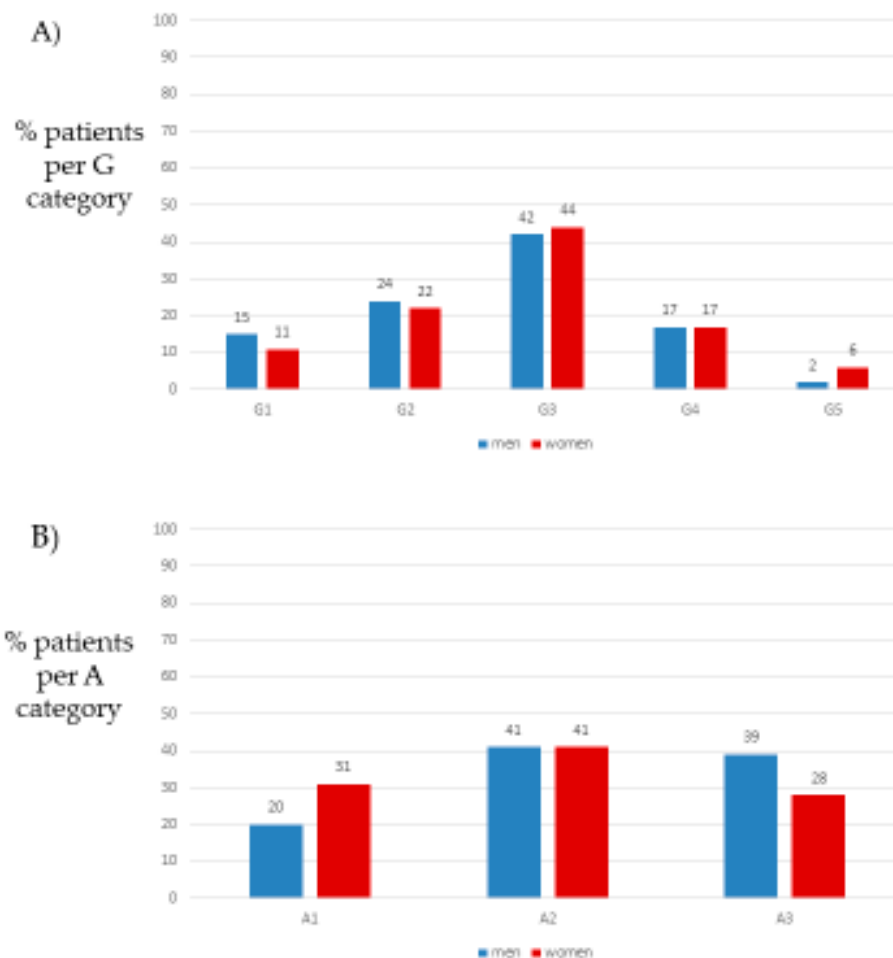
Variable	Coef.	OR	95% CI	P
UACR (mg/g)	0.001	1.001	(1.000-1.003)	0.016
SBP (mmHg)	0.086	1.09	(1.029-1.150)	<0.0001
FE Mg (%)	-0.518	0.596	(0.352-0.890)	0.009
Uric Acid (mg/dl)	0.638	1.892	(1.098-3.568)	0.022
Constant	-16.96			0.002

22 UACR: urinary:albumin creatinine ratio; SBP: systolic blood pressure; FE: fractional excretion.

23

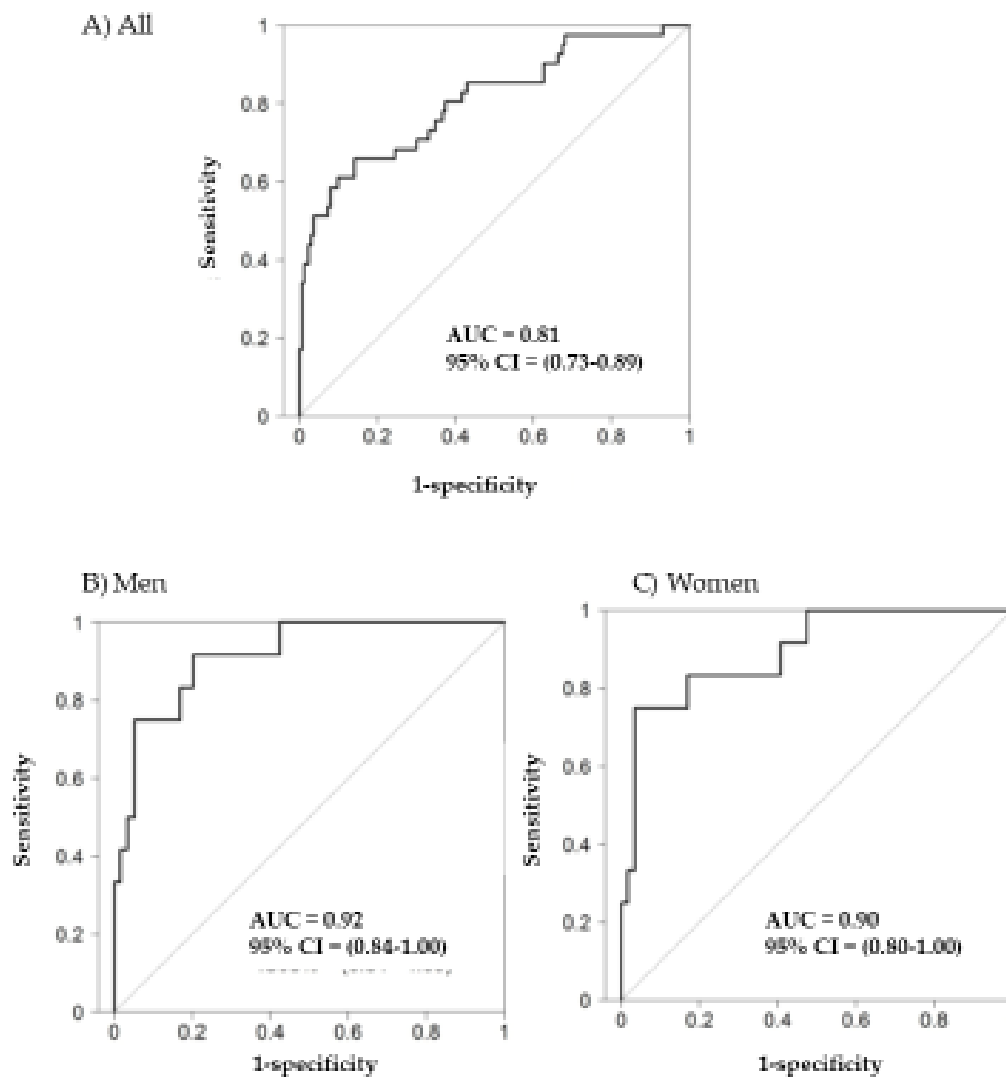
24 Supplementary figures:

Figure S1. Distribution of men and women in CKD eGFR G and albuminuria A categories at baseline



25 **Figure S1. Distribution of men and women in CKD eGFR G and albuminuria A**
 26 **categories at baseline. A)** Percentage of men and women per CKD eGFR G category. **B)**
 27 Percentage of men and women per CKD albuminuria A category. G and A categories defined
 28 as per KDIGO 2012. Percentages referred to the total number of men and the total number
 29 of women, respectively.

Figure S2. ROC for best multivariable model predictor of rapid progression



30 **Figure S2. ROC for best baseline multivariable model predictor of rapid progression.** Area under
 31 the curve (AUC) of the receiver operating characteristic (ROC) for prediction of rapid progression
 32 (defined as loss of eGFR >5 ml/min/1.73 m²/year according to KDIGO 2012 by the best baseline
 33 multivariable model. **A)** All patients. **B)** Men. **C)** Women.

34