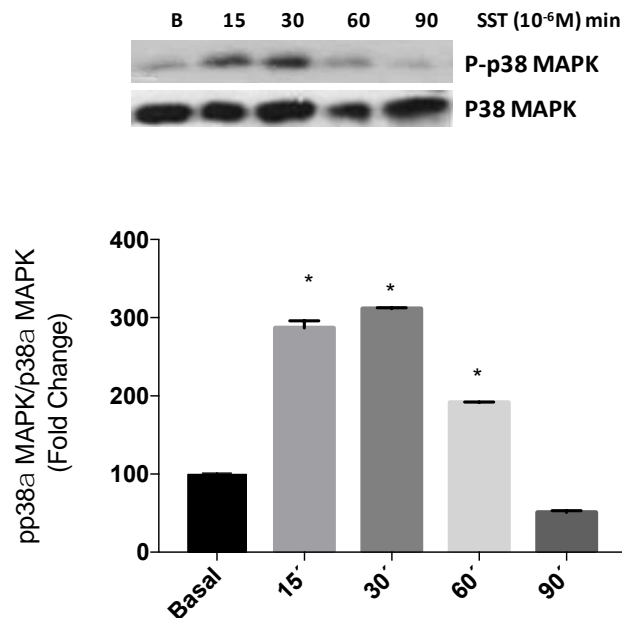


**Figure S1.** Blots of Figure 6B were quantified by scanning densitometry and the results are mean  $\pm$  SEM (n = 5 independent experiments). The fold change relative to the Basal condition is shown. \*  $p \leq 0.05$  vs. Basal; #  $p \leq 0.05$  vs. LPS; \$  $p \leq 0.05$  vs. SST (two-way ANOVA followed by Bonferroni *t*-test).



**Figure S2.** Direct effect of SST in the activation of p38 $\alpha$  MAPK in microglial cells. Bv.2 cells were stimulated with 10<sup>-6</sup> M SST for the indicated time-periods. Protein extracts were analyzed by Western blot with antibodies against phosphorylated p38 $\alpha$  MAPK and p38 $\alpha$  MAPK. Representative autoradiograms are shown. Blots were quantified by scanning densitometry, and the results are mean  $\pm$  SEM (n = 3 independent experiments). The fold change relative to the Basal condition is shown. \*  $p \leq 0.05$  vs. Basal (untreated cells) (two-way ANOVA followed by Bonferroni *t*-test).