

Supplementary Material

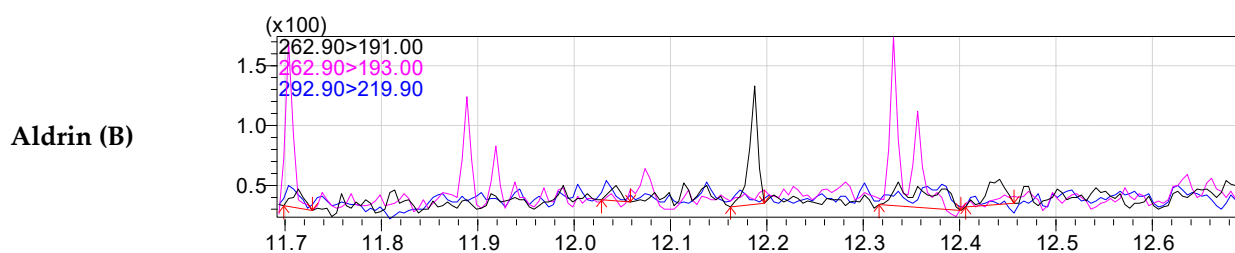
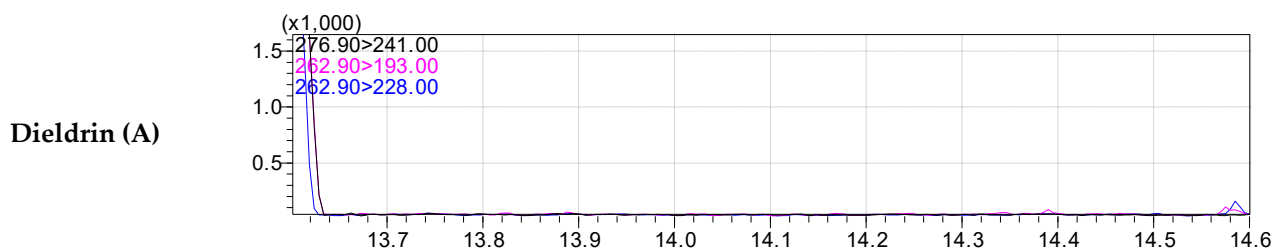


Figure 1. MRM chromatograms of dieldrin (A) and aldrin (B) in blank soil sample.

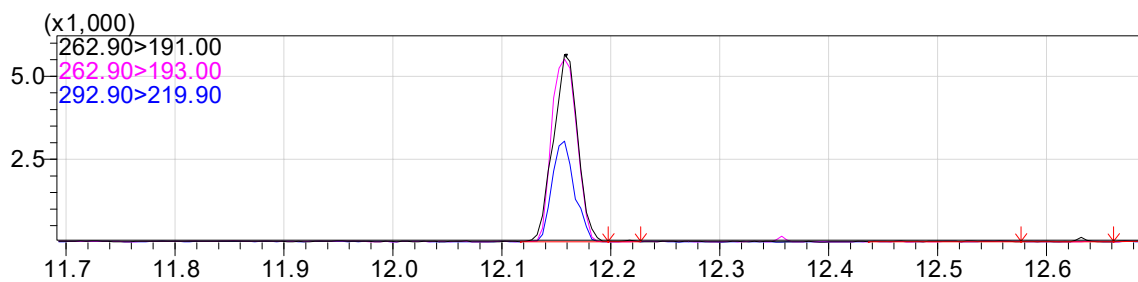


Figure 2. MRM chromatogram of aldrin standard solution in acetone (at 0.005 mg L⁻¹).

Table 1. Parameters used in exposure cancer and no-cancer risk assessments.

Parameter		Value	Reference
IRS	Adults	100	[1]
	Children	200	
SA	Adults	5700	[1]
	Children	2800	
AF	Adults	0.07	[1]
	Children	0.2	
BW	Adults	70	[1]
	Children	15	
ABS		0.1	[1]
EF		350	[1]
ED	Adults	24	[1]
	Children	6	
AT	Non-cancer risk	365×ED	[1]
	Cancer risk	25550	
PEF		1.36×10 ⁹	[1]
BAF		0.11	[2]
IRF		201000	[3]
CF		10 ⁻⁶	[1]
CSFo		16	[1]
ABSGI		1	[1]
IUR		4.6×10 ⁻⁶	[1]
SIRaa		114	[1]
SDCFaa		361	[1]
RfDo		0.00005	[1]

Table 2. Dieldrin PECsoil (mg/kg) values in the range of 0-20000 days, after application.

Time (days)	PECsoil (mg/kg)
0	12
1	11.995
2	11.991
4	11.982
7	11.968
14	11.936
21	11.905
28	11.873
50	11.774
100	11.553
365	10.447
1000	8.208
2000	5.614
10000	0.269
15000	0.040
17500	0.016
20000	0.006

References

1. US-EPA-IRIS. <https://www.epa.gov/iris/basic-information-about-integrated-risk-information-system>. Available online: (accessed on 2 November 2020).
2. US-EPA. U.S. EPA. (2005). Guidance for developing ecological soil screening levels [EPA Report]. (OSWER Directive 9285.7-55). Washington, DC: Office of Solid Waste and Emergency Response Available online: (accessed on 2 November 2020).
3. WHO/FAO. Report of a joint World Health Organization/ Food and Agriculture Organization expert consultation. Diet, nutrition and the prevention of chronic disease. Technical Report series 916. **2003**.