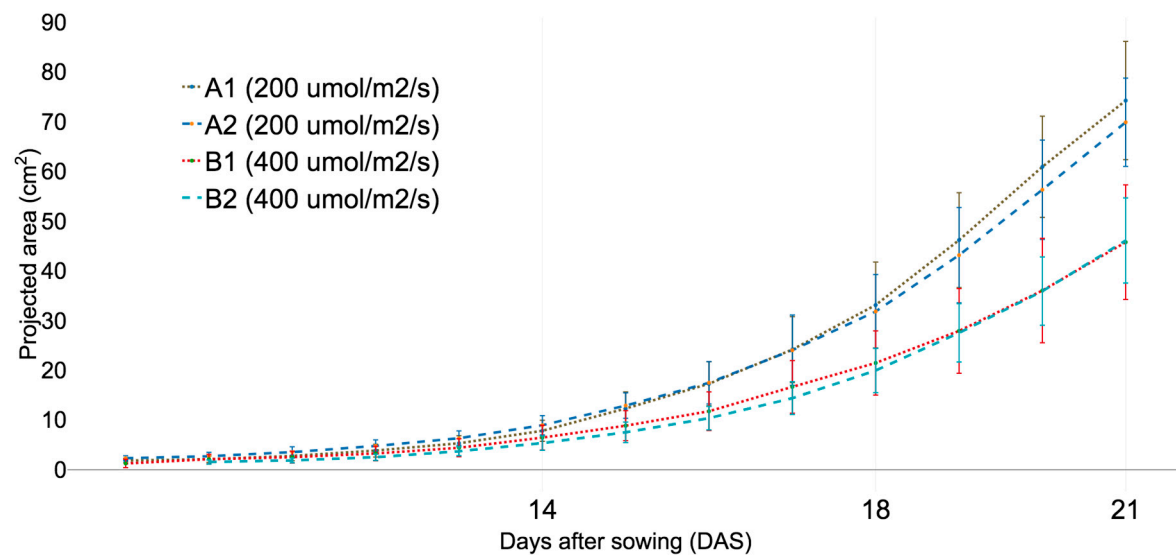


## Supplementary Materials



**Supplementary Figure S1.** Comparing the growth pattern of a green lettuce between the two lighting conditions. The results are presented as the mean of eight samples for each tray at different conditions. Each tray had a lighting condition of 200  $\mu\text{mol ms}^{-1} \text{s}^{-1}$  (A1) with replication (A2) and a lighting condition at 400  $\mu\text{mol l ms}^{-1} \text{s}^{-1}$  (B1) with replication (B2).

