

Supplementary Materials:

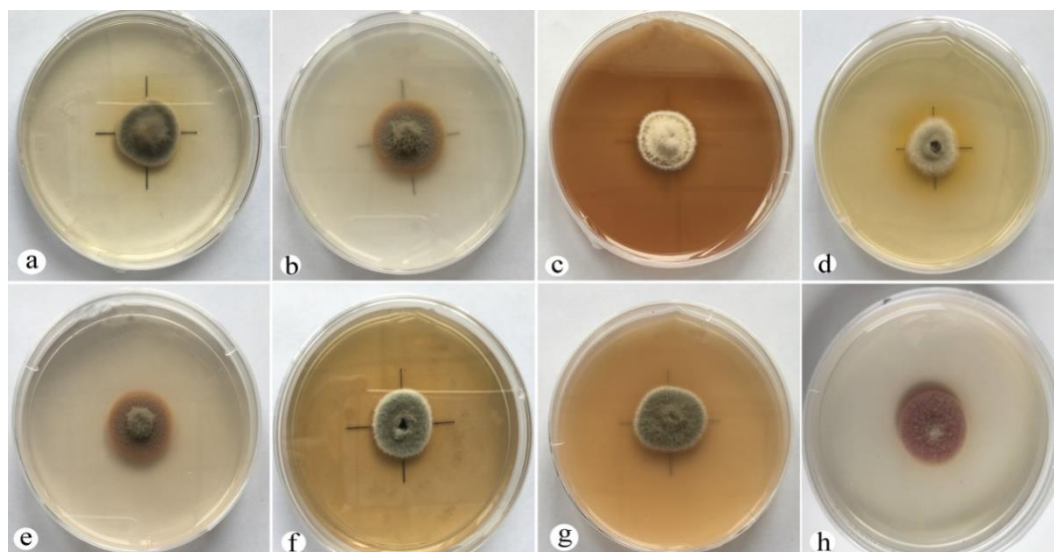


Figure S1: Morphology and characters of *P. radicina* after one week of cultivation on eight media. Colony morphology on (a) potato dextrose agar (PDA), (b) oatmeal agar (OA), (c) pine needle agar (PNA), (d) malt extract agar (MEA), (e) potato carrot agar (PCA), (f) cherry decoction agar (CHA), (g) V8 juice agar (V8A) and (h) alfalfa root decoction agar (ARDA).

Table S1. Effect of temperature on *P. radicina* germination and mycelium growth.

Temperature (°C)	Mycelium growth	Spore germination rate (%)
35	+ ¹	15.12±3.35
40	+	6.77±1.76
41	+	0.00±0.00
42	+	/ ²
43	+	/
44	+	/
45	+	/
50	+	/
51	+	/
52	+	/
53	+	/
54	+	/
55	-	/
60	-	/

¹ "+" means the mycelium of *P. radicina* were able to grow, "-" means the non-growth of mycelium.

² "/" means that the conidia of *P. radicina* were unable to germinate.