

Examining the Impact of Long-Term Industrialization on the Trace Metal Contaminants Distribution in Seawater of the Pula Bay, Croatia

Ozren Grozdanić ¹, Ana-Marija Cindrić ², Iva Finderle ¹ and Dario Omanović ^{2,*}

¹ Teaching Public Health Institute of Istrian Region, Nazorova 23, 52100 Pula, Croatia; analitika@zzjziz.hr (O.G.); ivafinderle@gmail.com (I.F.)

² Ruđer Bošković Institute, Bijenička 54, 10000 Zagreb, Croatia; ana-marija.cindric@irb.hr (A.-M.C); omanovic@irb.hr (D.O.)

Table S1. Maximum and „bottom“ sampling depths at sampling stations for all the sampling campaigns.

Site	Max. depth
PU-1	34.9
PU-2	37.7
PU-3	31.5
PU-4	36.4
PU-5	23.6
PU-6	25.0
PU-7	26.2
PU-8	26.9
PU-9	6.7
PU-10	23.4
PU-11	22.5
PU-12	23.2
PU-13	17.0
PU-14	18.2
PU-15	21.1
PU-16	16.7
PU-17	10.5
PU-18	13.1
PU-19	7.5
PU-20	11.0

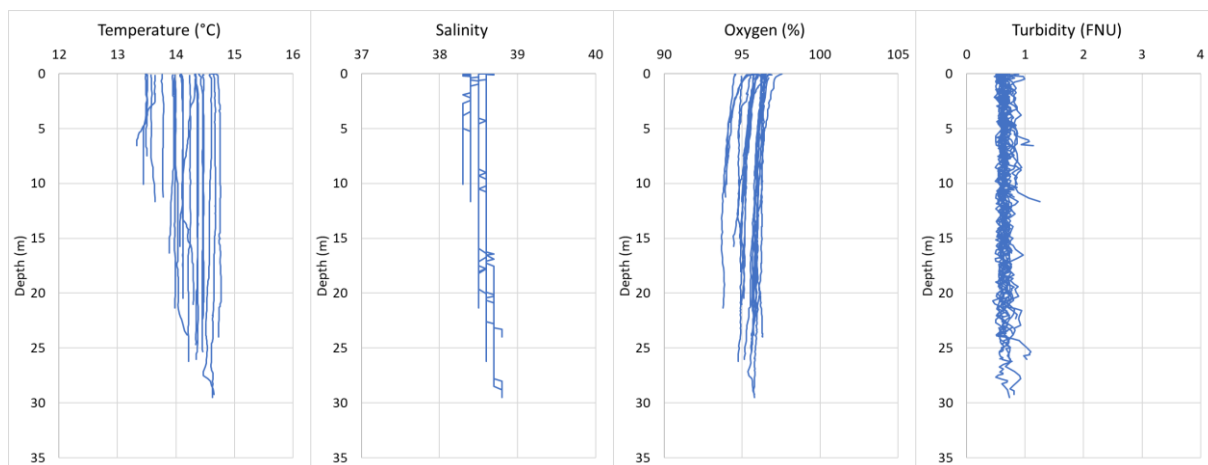


Figure S1. Temperature, salinity, oxygen saturation and turbidity profiles taken during November 2021 campaign.

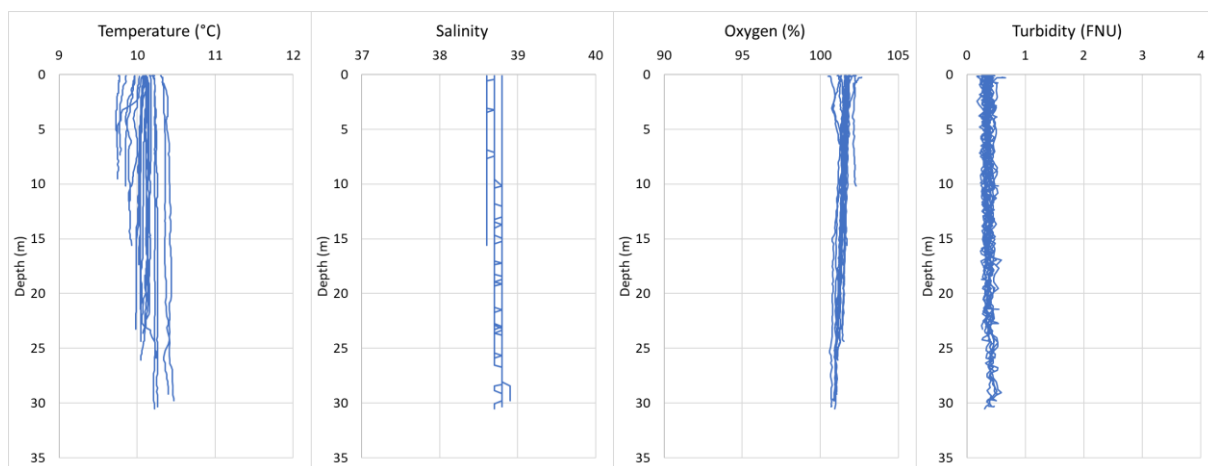


Figure S2. Temperature, salinity, oxygen saturation and turbidity profiles taken during March 2022 campaign.

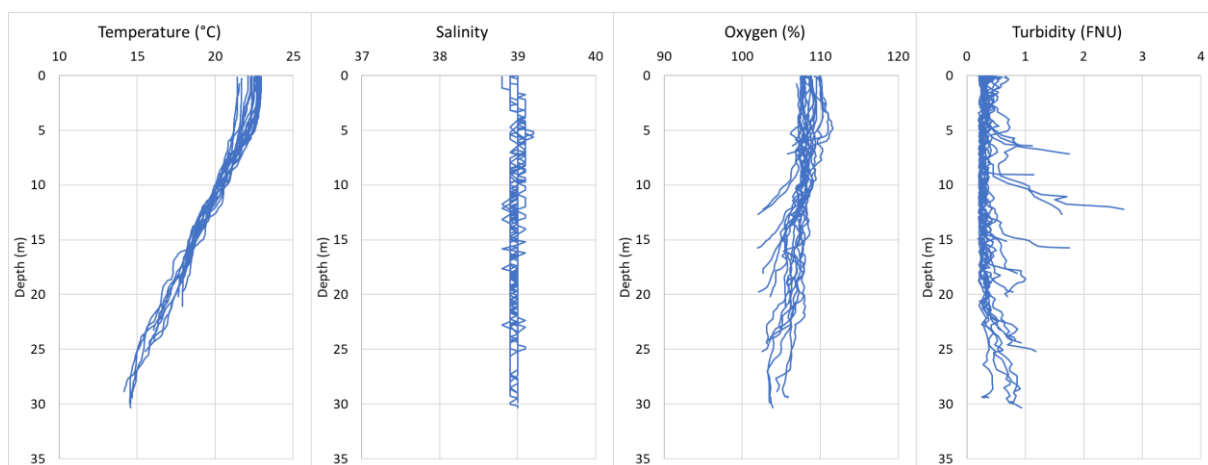


Figure S3. Temperature, salinity, oxygen saturation and turbidity profiles taken during June 2022 campaign.

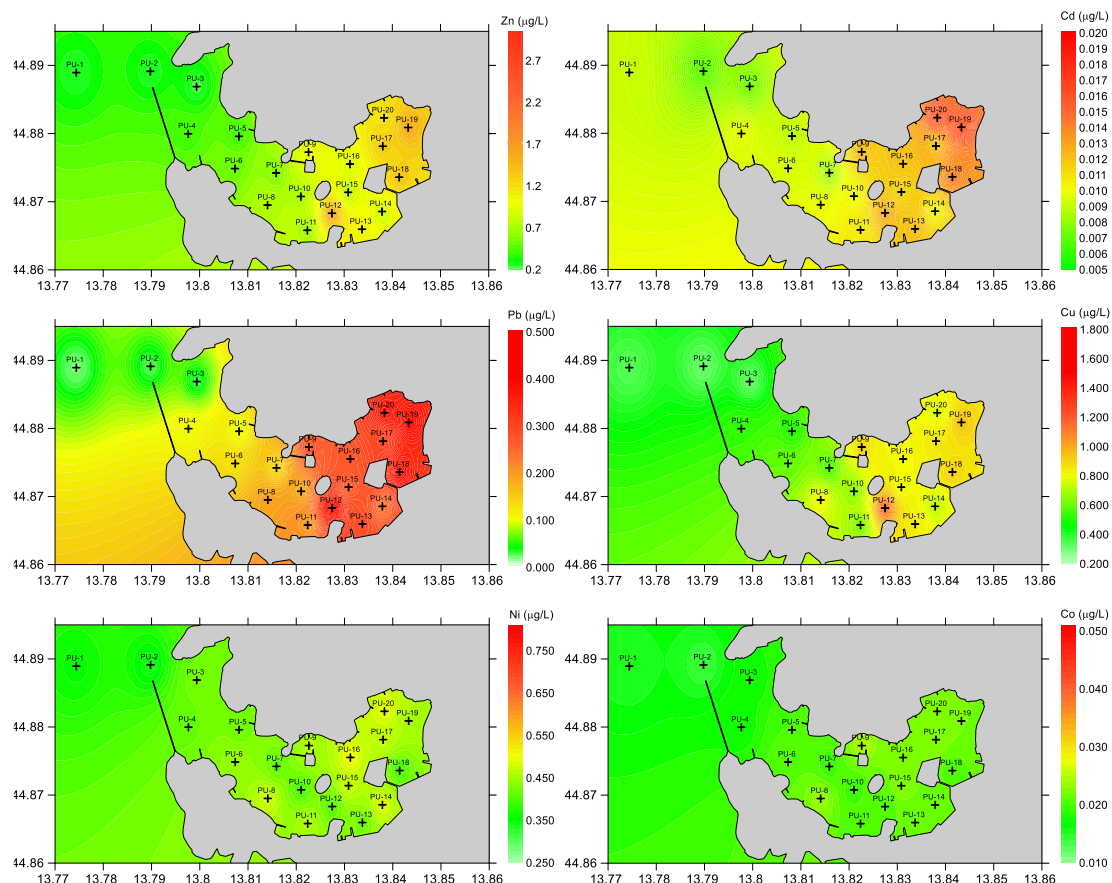


Figure S4. Spatial variability of dissolved TMs measured ins samples taken during November 2021 campaign in surface layer. Metals are indicated on each map.

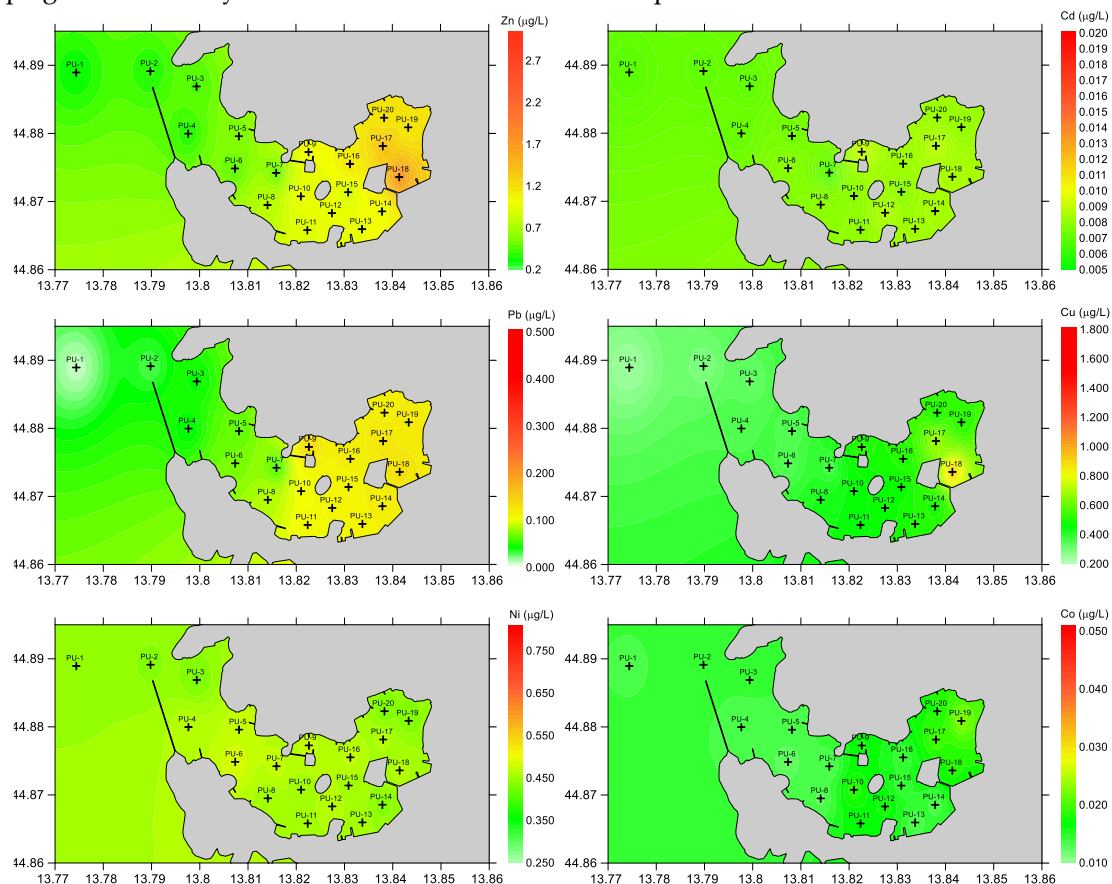


Figure S5. Spatial variability of dissolved TMs measured ins samples taken during March 2022 campaign in surface layer. Metals are indicated on each map.

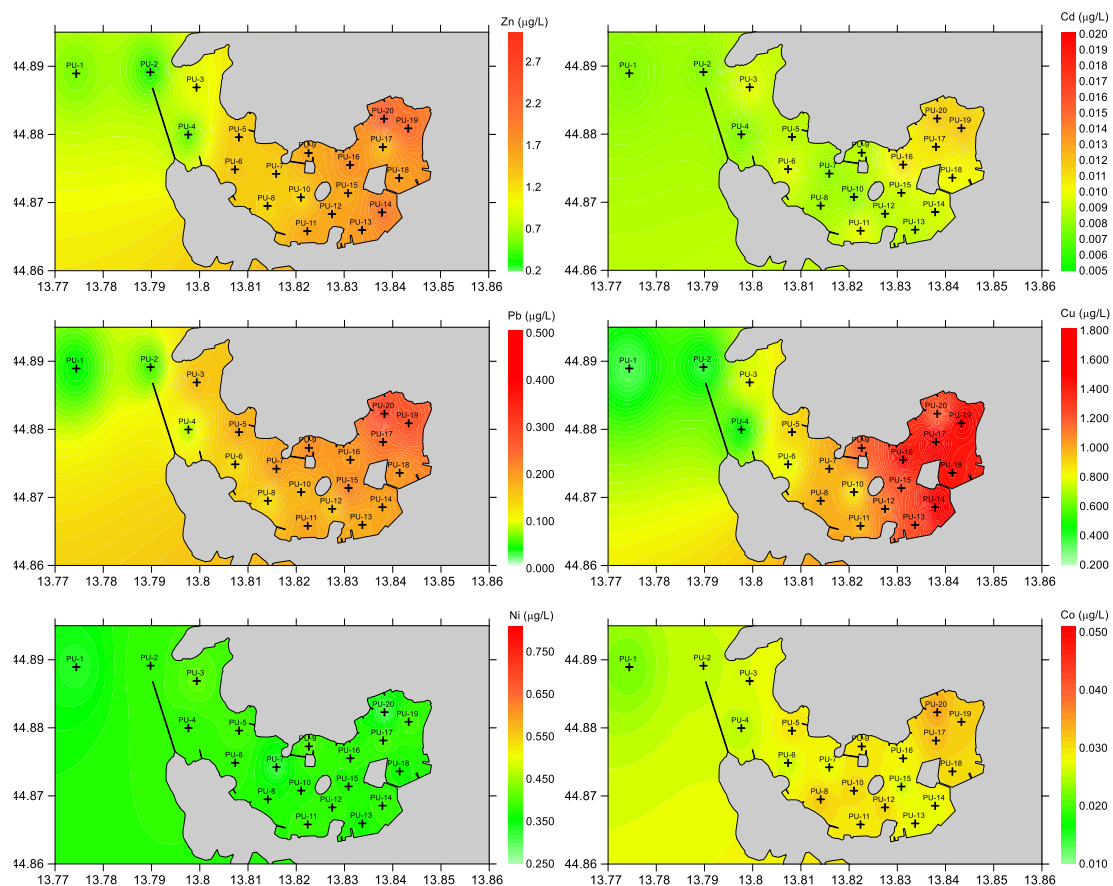


Figure S6. Spatial variability of dissolved TMs measured ins samples taken during June 2022 campaign in surface layer. Metals are indicated on each map.

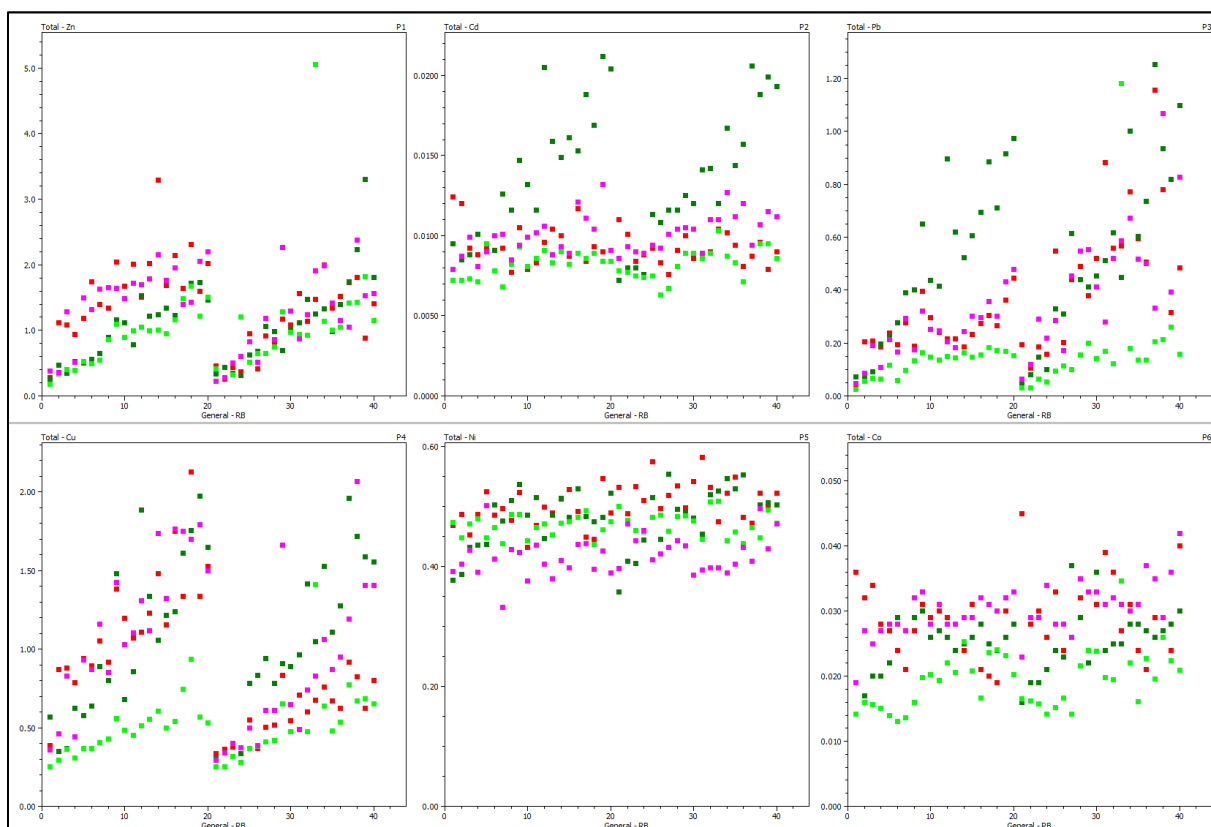
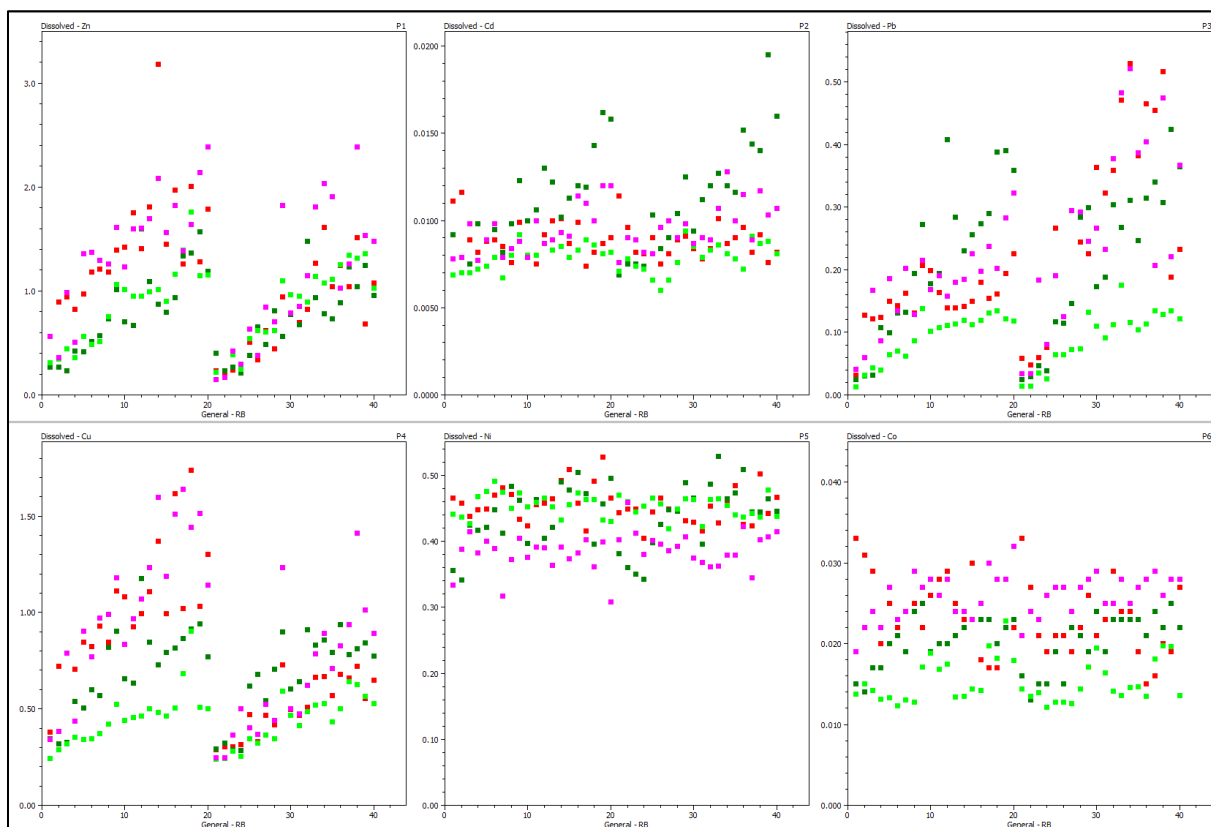


Figure S7. Dissolved (upper panel) and total (lower panel) concentrations of analyzed TMs for every campaign in both sampled layers: 1-20 surface layer, 21-40 bottom layer. Color code: red - July 2021, dark green – November 2021, light green - March 2022, fuchsia – June 2022.

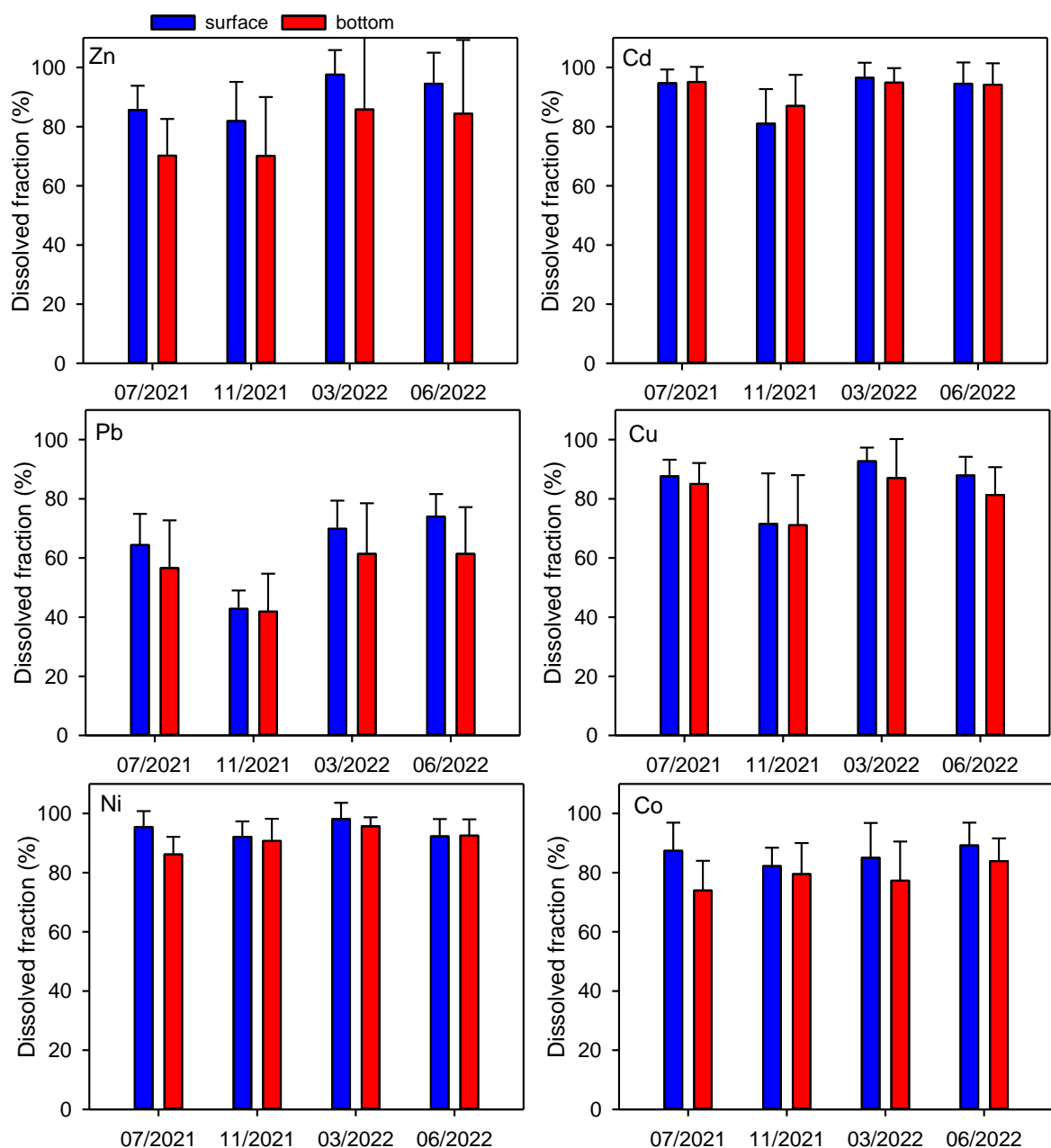


Figure S8. Dissolved fraction of analyzed TMs for each campaign in both sampled layers.

Table S2. Environmental quality standards for metals in marine waters.

		Zn (µg/L)	Cd (µg/L)	Pb (µg/L)	Cu (µg/L)	Ni (µg/L)	Co (µg/L)
AA-EQS		-	0.2	1.3	-	8.6	-
ANZECC DGV Level of species protection (%)	99%	3.3	0.7	2.2	0.3	7	0.005
	95%	8	5.5	4.4	1.3	70	1
	90%	12	14	6.6	3	200	14
	80%	21	36	12	8	560	150
USEPA – CCC		81	7.9	8.1	3.1	8.1	-
DGT-EQS		-	0.18	3.08	-	0.12	-

