

Comparative Analysis of Floc Measurement Setups for Characterizing Settling Velocities and Size Distributions

W. Ali¹, A. Kirichek², A.J. Manning^{1,3,4}, and C. Chassagne¹

¹Section of Environmental Fluid Mechanics, Department of Hydraulic Engineering, Faculty of Civil Engineering and Geosciences, Delft University of Technology, Stevinweg 1, 2628 CN Delft, the Netherlands

²Section of Rivers, Ports, Waterways and Dredging Engineering, Department of Hydraulic Engineering, Faculty of Civil Engineering and Geosciences, Delft University of Technology, Stevinweg 1, 2628 CN Delft, the Netherlands

³School of Biological and Marine Sciences, University of Plymouth, Plymouth, United Kingdom

⁴Coasts and Oceans Group, HR Wallingford, Wallingford, United Kingdom

January 22, 2025

Supplementary material

1 Experimental methods

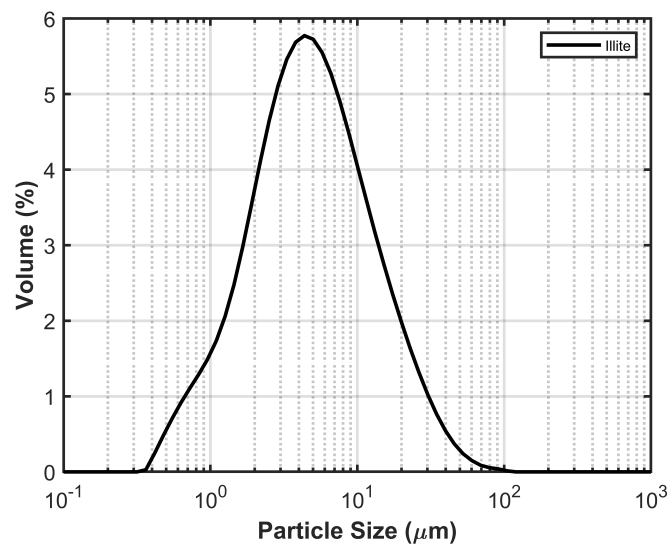


Figure S1: Particle size distribution of an unflocculated illite suspension, measured using the set-up described in S2.

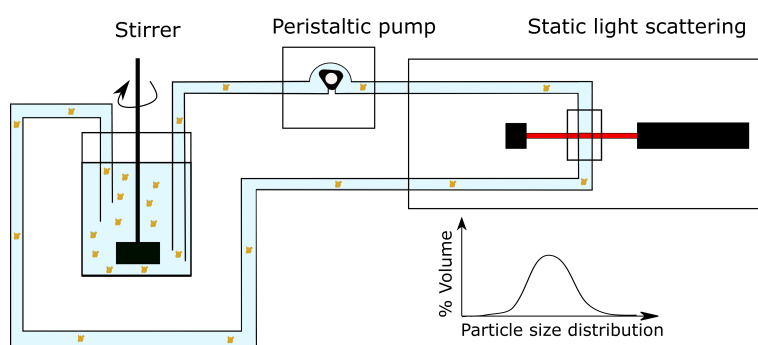


Figure S2: Schematic of Malvern Master Sizer 2000 setup [58].

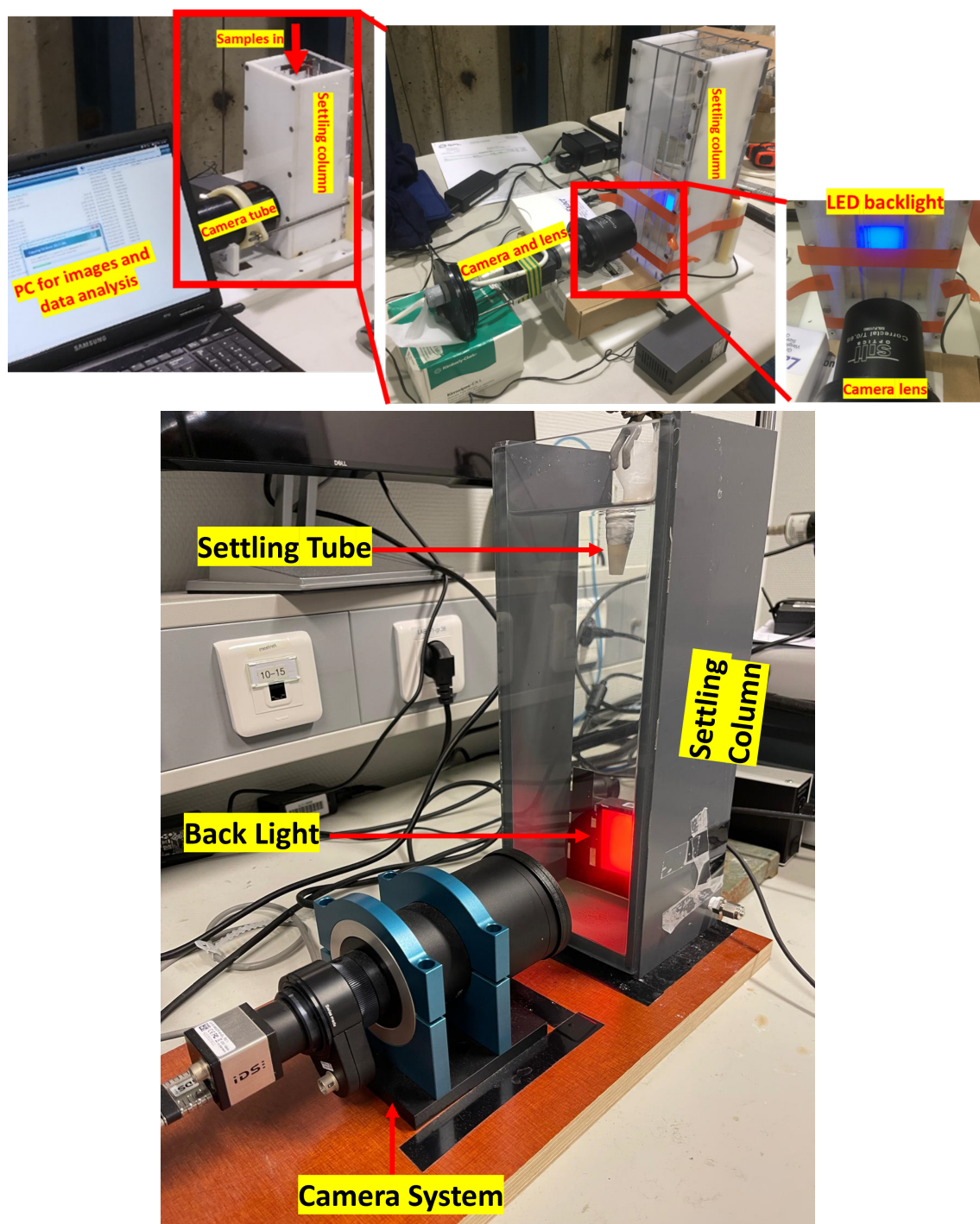


Figure S3: (Top) Picture of LabSFLOC-2 (Bottom) Picture of FLOCCAM.

Parameter	Value	Unit
pH	7.9-8.2	-
Bicarbonate (HCO ₃)	120-130	mg/L
Sulphate (SO ₄)	42-45	mg/L
Sodium (Na)	33-35	mg/L
Calcium (Ca)	44-45	mg/L
Magnesium (Mg)	6.9-7.3	mg/L
Chloride (Cl)	46-48	mg/L

Table S1: Tap water specifications.

2 Results

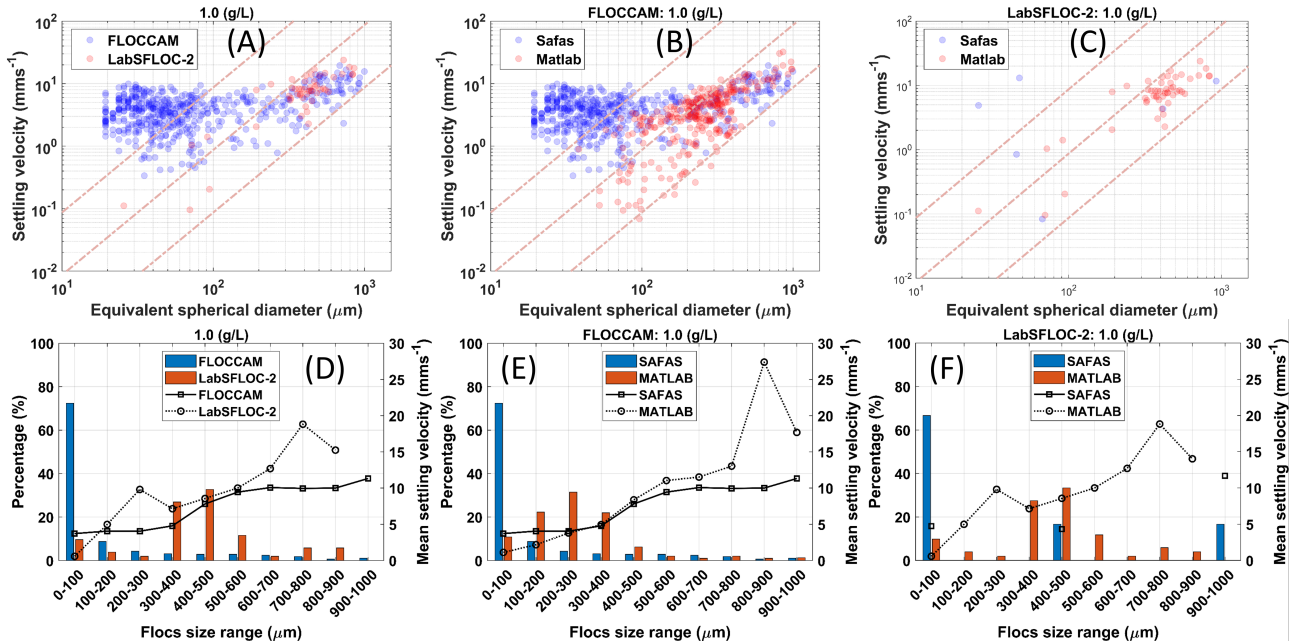


Figure S4: Comparison of floc size and settling velocities for 1 g/L illite clay suspension flocculated using 2.5 mg/g anionic polyacrylamide.

5

5

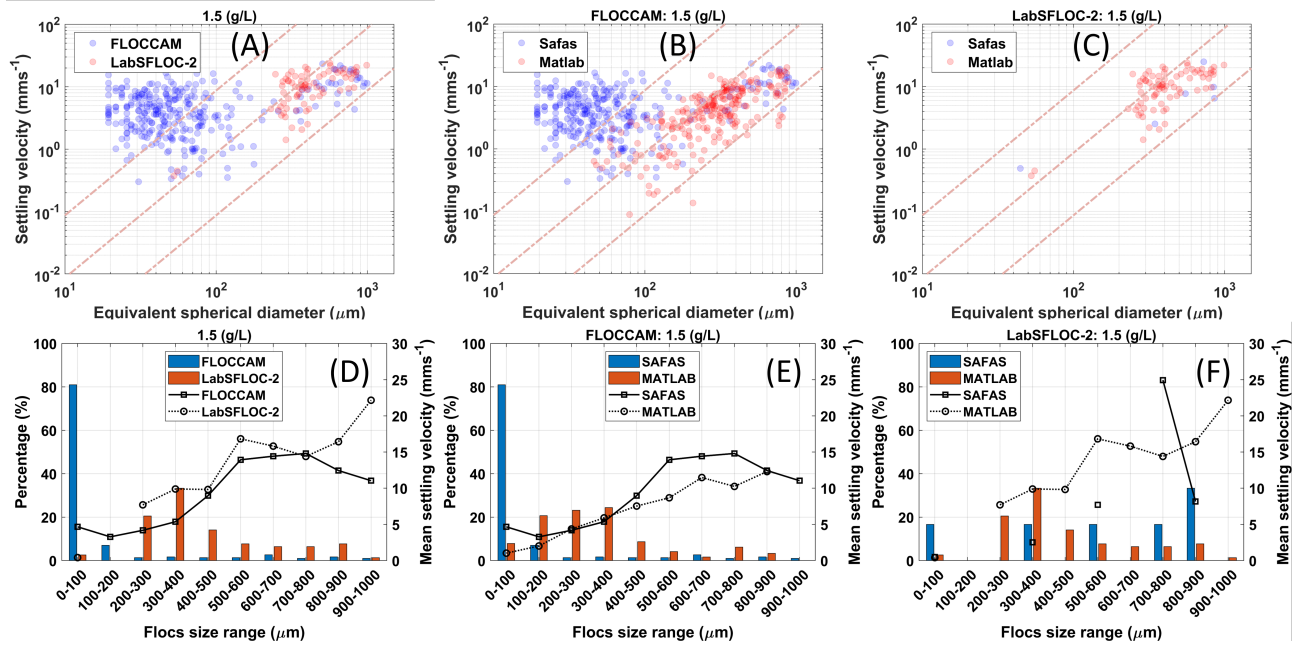


Figure S5: Comparison of floc size and settling velocities for 1.5 g/L illite clay suspension flocculated using 2.5 mg/g anionic polyacrylamide.