

Article

Simulation of Ice-Propeller Collision with Cohesive Element Method

Li Zhou ¹, Feng Wang ², Feng Diao ³, Shifeng Ding ^{1,*}, Hao Yu ⁴ and Yang Zhou ⁴

¹ School of Naval Architecture and Ocean Engineering, Jiangsu University of Science and Technology, Zhenjiang 212003, China; zhouli209@hotmail.com

² School of Naval Architecture, Ocean and Civil Engineering, Shanghai Jiao Tong University, Shanghai 200240, China; wangfeng0630@hotmail.com

³ Shanghai branch, China Ship Scientific Research Center, Shanghai 200011, China; diaofeng@702sh.com

⁴ Chin Shipbuilding Industry Corporation Limited, Beijing 100044, China; yugong9281224@163.com (H.Y.); zhouyang@cssc.net.cn (Y.Z.)

* Correspondence: 15001945469@163.com

Received: 29 July 2019; Accepted: 25 September 2019; Published: 2 October 2019



Abstract: The existence of ice in ice-covered waters may cause damage to the propeller of polar ships, especially when massive ice floes are submerged around the hull. This paper aims to simulate an interaction process of a direct ice collision with a propeller based on the cohesive element method. A constitutive law is applied to model the ice material. The model of ice material is validated against model test results. The resulting impact loads acting on the contact surfaces and the corresponding ice block velocity are calculated in the time domain. The ice crushing, shearing and fracture failures are reproduced in the simulation. The convergence study with three meshing sizes of ice block is performed. To carry out a parametric study, five parameters are selected for analysis. These parameters are composed of rotational speed, direction of the propeller, initial speed of the ice block, contact position, and area between the ice and the propeller. The results show that the ice loads are affected by the five factors significantly. Ice loads tend to increase by decreasing the rotational speed, increasing the initial ice speed and the contact area, and changing the rotational direction from clockwise to counterclockwise. The effect of the contact position on the impact loads is relatively complex, depending on rotational speeds of the propeller.

Keywords: propeller-ice collision; ice loads; cohesive element; ice failure

1. Introduction

Arctic shipping has become increasingly attractive due to the huge economic value compared to traditional sea routes. Polar ships or ice-strengthened ships are expected to navigate in the ice-covered seas safely and efficiently. However, sea ice as a solid material may endanger the hull structure and the propeller. For hull design, some regulations or codes are used to ensure that the strength of the hull is high enough to resist ice impact. As for the propeller, this often interacts with underwater ice floes, which is not easily observed in different realistic operation modes. The resulting ice load of dynamic ice-propeller interaction is not clear and should be investigated further.

In general, there are two kinds of ice-propeller interactions. The first one is indirect interaction. An ice block keeps away from the propeller and does not contact the propeller directly. It only affects the flow field around the propeller and thus makes propulsion efficiency decline to some degree. The second one is direct interaction. The propeller may mill or collide with an ice block depending on many factors such as the contact position, the size of ice block, the movement of the ice block, the rotational speeds of the propeller, and so on.

Direct propeller-ice interaction has been studied in many ways. For the ice-propeller milling process, the ice block remains still and the propeller moves towards the ice with a certain rotational speed. Some scale model tests of propeller milling with ice were performed to measure ice loads [1–5]. The numerical simulation for ice-propeller milling were also tried. Wang et al. [6,7] applied a numerical method to predict ice milling load. Ye et al. [8] and Wang et al. [9] simulated an ice-strengthened propeller-ice milling process and analyzed the main factors that may affect the ice load significantly with peridynamics theory.

Another type of direct interaction is called an ice-propeller collision, under which ice block moves freely in 6 degrees of freedom (dofs) during the interaction. Brouwer et al. [10] tried a model test to measure ice impact on a propeller in 6 dofs. However, it is hard to implement the test since main factors influencing the load were not easily controlled. Simple theoretical methods were used to calculate the impact loads during the collision [11,12]. The limitation is that dynamic rotation of the propeller and the full contact of blades with an ice block were not considered in the calculation. As the development of computation, numerical simulations have gradually been used for propeller–ice collision analysis with some commercial software. Khan et al. [13] applied a numerical method to study the impact load for an ice-propeller collision. The method was also validated with the measured results from experiments. Hu [14] developed a propeller–ice collision model in the commercial software LS-DYNA (Livermore Software Technology Corporation, Livermore, CA, USA). The ice block model was built by the smoothed particle hydrodynamic (SPH) method while the blade model was made by the finite element Lagrange method. The results show that it is difficult to reproduce the rational fracture and damage of an ice block.

The mechanism of ice-propeller interaction is not well understood so far. To give insight into the collision process, a rational propeller–ice collision model is built by using the cohesive element method to simulate the interaction. The structure of the propeller is assumed to be rigid and the ice block could move freely during the collision. The phenomenon of different ice failure modes is reproduced with simulated ice loads in the time domain. The convergence and parametric study are performed to analyze the main parameters that would affect the impact of ice loads.

2. Numerical Model

The failure patterns of ice include crushing and fracture when the ice blocks hit on the propeller blade. The traditional finite element method (FEM) method is based on the continuous medium hypothesis, which finds it difficult to solve these dis-continuous problems. Thus, cohesive element method (CEM) is introduced to solve the occurrence of ice fracture during the interaction between ice and propeller.

The CEM is developed from the cohesive zone model (CZM), which is one of the FEM simulations. Hillerborg et al. [15] firstly proposed CZM to simulate the crack propagation on an unreinforced concrete beam. Subsequently, many researchers used CEM for simulating the fracture of sea ice [16–18]. CEM showed good performance in solving those questions. There are 2 kinds of elements to model ice in CEM, bulk elements and cohesive elements (see Figure 1). Bulk elements are used to simulate the ice block while the cohesive elements are used to construct the internal faces between two neighboring bulk elements [19–22].

In CEM simulation, linear softening model is a traction-separation law which is the most commonly applied. The corresponding function is written as follows [23],

$$T = \begin{cases} \frac{T_0}{\delta_n^1} \delta_n & 0 \leq \delta_n < \delta_n^1 \\ \frac{T_0}{(\delta_n^f - \delta_n^1)} (\delta_n^f - \delta_n) & \delta_n^1 \leq \delta_n < \delta_n^f \\ 0 & \delta_n \geq \delta_n^f \end{cases} \quad (1)$$

$$S = \begin{cases} \frac{S_0}{\delta_\tau^1} \delta_\tau & 0 \leq \delta_\tau < \delta_\tau^1 \\ \frac{S_0}{(\delta_\tau^f - \delta_\tau^1)} (\delta_\tau^f - \delta_\tau) & \delta_\tau^1 \leq \delta_\tau < \delta_\tau^f \\ 0 & \delta_\tau \geq \delta_\tau^f \end{cases} \quad (2)$$

where T and S denote cohesive forces in normal and tangential direction; δ_n and δ_τ denote crack separations in normal and tangential direction; T_0 and S_0 denote failure stress in normal and tangential directions; δ_n^1 and δ_τ^1 denote corresponding crack separations; δ_n^f and δ_τ^f denote maximum crack separations.

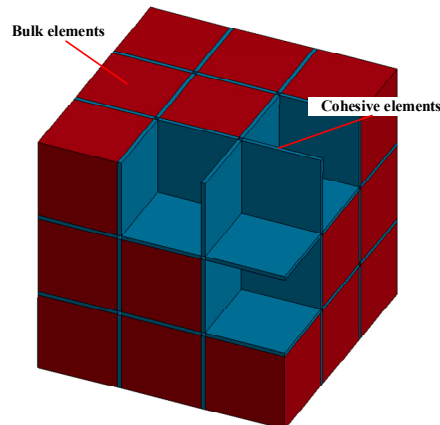


Figure 1. Element types of cohesive element method (CEM).

The relationship between normal separation and cohesive force is presented in Figure 2. For mode I fracture, cohesive force T increases linearly with the growth of crack separation δ_n under impact at the first stage. When it reaches up to maximum stress T_0 , the crack starts to occur from this moment. As δ_n continues to increase, the ice stiffness shows linear softening with expansion of the crack. When T drops to zero, maximum crack separations δ_n^f is achieved, where the cohesive element fails with adjacent bulk elements separated. The fracture energy GIC is released during this process, which is calculated as the area of the traction-separation curve.

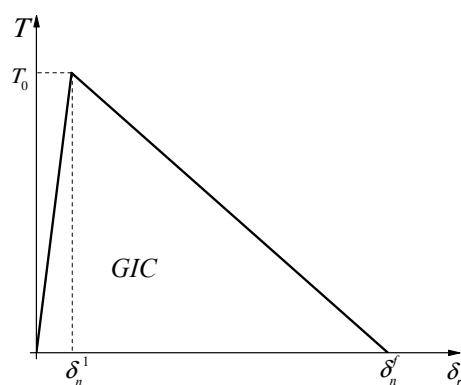


Figure 2. Relationship between cohesive force and crack separation for model I fracture.

Local crushing should be taken into consideration in the ice-propeller interaction process as well in addition to fracture and crack. Usually, mesh size with FEM simulation is so large that it cannot capture the local crushing due to the difficulty of explicitly modelling microscopic failure. A constitutive law based on elastoplastic linear softening was used and has been validated effectively [18,20]. The corresponding hardening curve is given in Figure 3, where σ_γ is compressive strength as initial crushing point. Crushed strain ϵ_c is derived after going through a linear softening phase. The ice

material could be taken as completely crushed afterwards. When it advances to failure strain ϵ_f , the ice element fails and is deleted from the original ice block. This constitutive law is used in the present simulation.

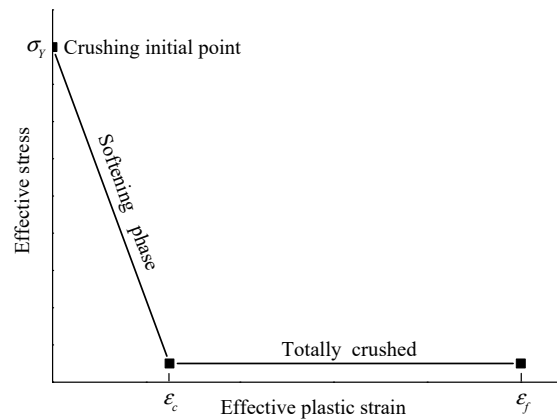


Figure 3. Elastoplastic constitutive law given.

3. Numerical Model of Ice-Propeller Collision

Figure 4 shows a full-scale ice-propeller collision model made with software LS-DYNA. The propeller will rotate at a constant speed $\omega_p = 2$ rps anticlockwise, while the ice block will move towards the back of the blade along the negative direction of the x-axis. The blades were designed with reference to Stone Marine Meridian series [23–25]. There were ice-strengthened by increasing the thickness for navigation in ice. There are 4 blades in total. The diameter for each blade is 4.12 m. The mean-pitch/diameter ratio and expanded blade area ratio are 0.76 and 0.669, respectively. The structural model of the propeller and its meshing are presented in Figure 5. It is assumed that no deformation occurs to the propeller under ice block impact. The material of the propeller is taken as rigid steel with properties given in Table 1.

The model of the ice block was made as cubic with a length of 66 mm, as shown in Figure 6. The ice block constituted hexahedral ice bulk elements and cohesive elements which are attached to bulk elements. An elastoplastic constitutive law of ice bulk elements is applied to simulate local ice-crushing failure against structures. The cohesive elements are used to simulate fracture failure of ice. The material of the ice block is shown in Table 2.

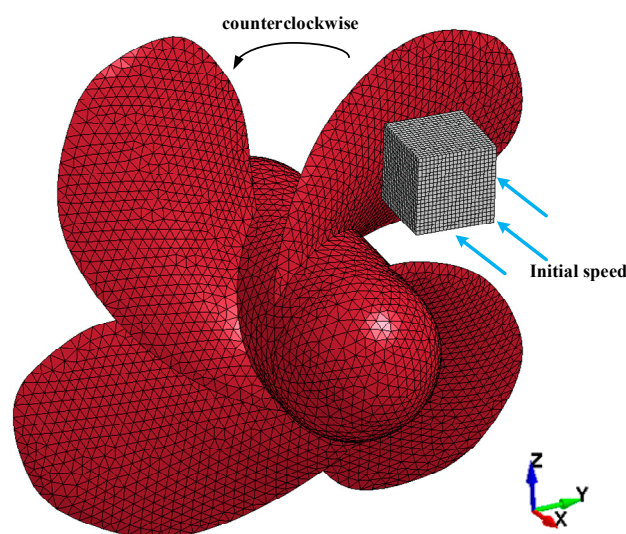


Figure 4. The numerical model of ice block impacting propeller.

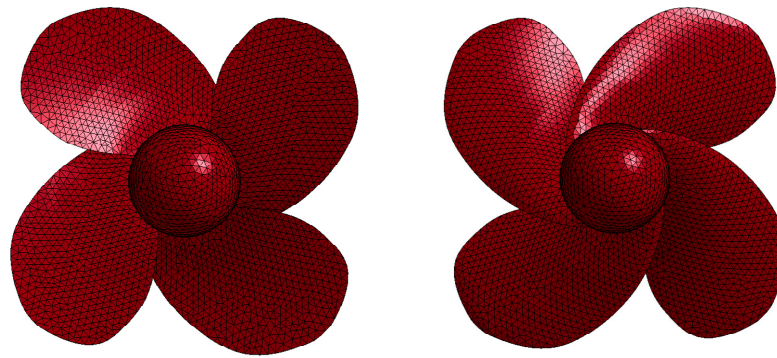


Figure 5. The model and mesh division of the propeller (Left: blade face; Right: blade back).

Table 1. The material parameters of the propeller.

Items	Value
Density (kg/m ³)	7850
Elastic modulus (GPa)	200
Poisson ratio	0.3

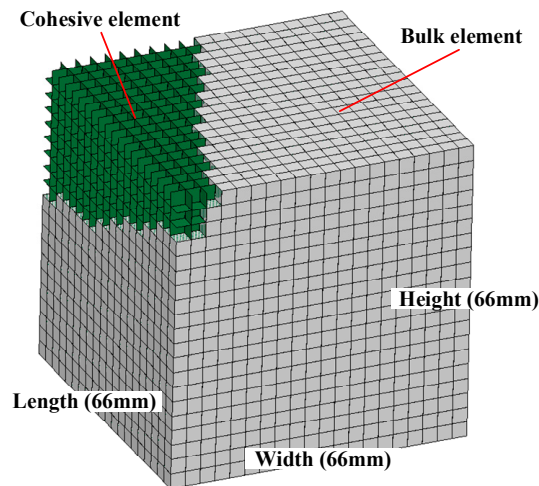


Figure 6. The model and mesh division of the ice block.

Table 2. The material parameters of ice bulk elements and cohesive elements.

Bulk Elements		Cohesive Elements	
Items	Value	Items	Value
Density (kg/m ³)	910	Density (kg/m ³)	910
Elastic modulus (GPa)	5	Elastic modulus (GPa)	5
Poisson ratio	0.3	T_0 /Tensile strength (MPa)	1.0
Compressive strength (MPa)	2.0	S_0 /Shear strength (MPa)	1.0
Crushed strain ϵ_c	0.35	GIC/Fracture energy in mode I (J/m ²)	30
Failure strain ϵ_f	0.5	GIIC/Fracture energy in mode II (J/m ²)	30

All motions except rotation around x -axial are restricted. The motions of ice in all 6 dofs are set free without any constrain, which are analogue to ice collision with the blades. The built-in function of CONTACT-ERODING-NODES-TO-SURFACE in LS-DYNA is customized to detect the contact between the ice block and blades and thus calculate the contact force. The friction coefficient of the ice-blade is set to 0.2. The ice-ice contact is detected by the function of CONTACT-ERODING-SINGLE-SURFACE. The friction coefficient for ice–ice contact is set to 0.1. The explicit integral algorithm is used in LS-DYNA. The time step is determined by the minimum size of finite elements automatically and there is no need to define it by users.

4. Validation Study

4.1. Numerical Validation of Ice Material

The relationship of pressure and area curve is often used to validate the modelling of the ice material. The numerical calibration is based on the ice cone crushing tests carried out by Kim et al. [23]. The constant velocities (1 mm/s and 100 mm/s) are used to simulate the impact action between steel indenter and ice cone, as shown in Figure 7. The dimension of the steel indenter is about 400 mm × 400 mm and the diameter of the ice cone is 250 mm.

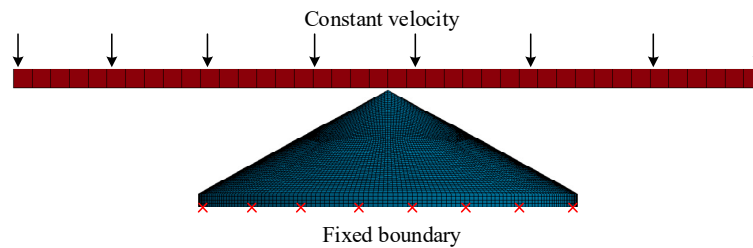


Figure 7. The model of ice-cone crushing tests.

Figure 8 gives the comparison between the numerical results of the presented method and the experimental results at different impact velocities. The simulation results show the same trend of the experimental results, i.e., the pressure curves decrease rapidly with the increase of nominal contact area, and the distributions of the scattered points are close to exponential form. The comparison also shows that the simulation results fit well with the experimental results. The difference is less than 20%, while the pressure-area curves between 800 to 1200 shows a consistent trend.

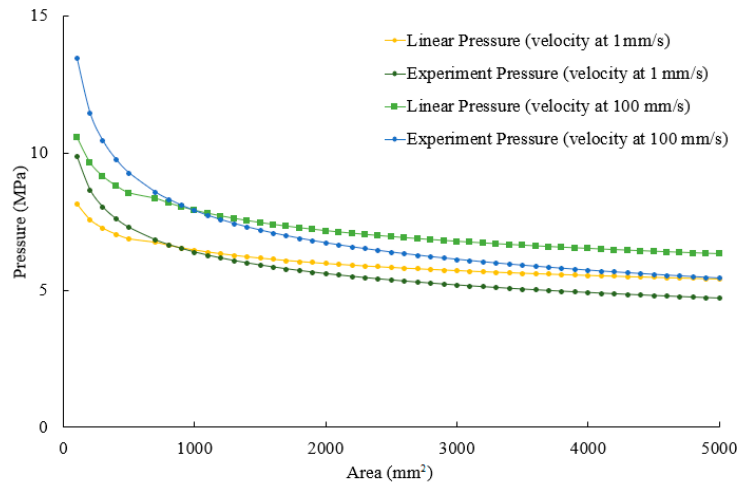


Figure 8. Comparison of pressure-area relationships between simulations and experiments.

4.2. Validation of Ice-Propeller Milling

Ice-propeller milling is also a kind of direct ice-propeller interaction scenario where the ice block is fixed and a rotating propeller will mill against ice with a certain speed. Since there is no public test data of ice-propeller collisions used for numerical simulation comparison, validation of the numerical ice-propeller milling process is presented as an alternative. Wang et al. [5] carried out a series of ice-propeller milling tests in the ice basin in Canada. In numerical simulation, the propeller model and ice block are set to be as the same as those used in the test as shown in Figure 9. The other input parameters could refer to Wang et al. [25].

The impact force and the moment from both numerical simulation and measurement are shown in the time domain with a duration of one second in Figure 10. Five peaks occur apparently for the two

lines. Generally speaking, the simulation and the experimental results coincide well with each other. These peaks are extracted for comparison between the simulation and model test. Table 3 presents the comparison result for each peak value and mean value. The discrepancy between simulation and experiment is 0.4% for mean peak load and 9.1% for mean peak moments, which shows that the present simulation method is effective and reasonable.

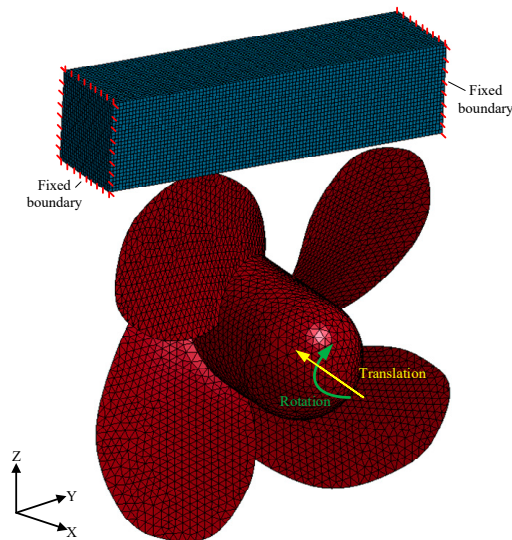
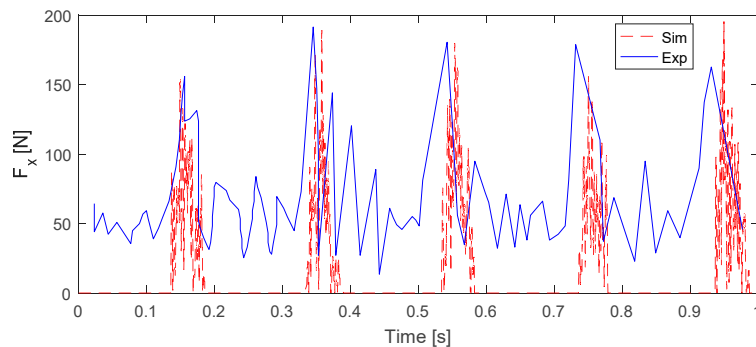
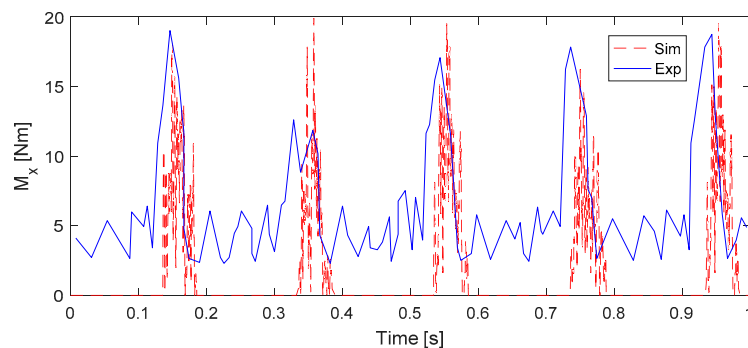


Figure 9. The configuration of ice-propeller milling.



(a)



(b)

Figure 10. Simulated and measured ice loads during ice-milling process. (a) Force comparison between the simulation and the model test. (b) Torsional moment comparison between the simulation and the model test.

Table 3. Comparison of peak ice force and moment.

Peak	Force			Moment		
	Simulation (N)	Experiment (N)	Error	Simulation (Nm)	Experiment (Nm)	Error
Peak 1	151.6	155.9	-2.8%	17.95	19.02	-5.6%
Peak 2	189.3	191.5	-1.2%	19.92	12.61	57.9%
Peak 3	179.8	180.5	-0.4%	19.52	17.07	14.4%
Peak 4	156.8	178.8	-12.3%	16.24	17.84	-8.9%
Peak 5	195.4	162.7	20.0%	19.51	18.75	4.1%
Mean	174.6	173.9	0.4%	18.62	17.06	9.1%

5. Convergence Study

The simulation results may be sensitive to the meshing size of ice block. Therefore, we have to study the influence of meshing size in this section to show the reliability of present simulation method. Three kinds of meshing sizes, namely coarse, medium and dense, are selected. The sizes are $d/80$, $d/120$ and $d/150$ respectively.

The simulations of ice block-blade collision with different ice-block meshing are performed in the time domain. The corresponding time series of axial force F_x and moment M_x are plotted in Figure 11. The collision process lasts around 0.05 second. Within the interaction, the ice block crushes against the surface of the blade and then leaves. It is clear from Figure 11 that the impact load increases in an oscillatory way and decreases afterwards. The amplitudes and mean forces are close for three cases with different meshing sizes. The mean, standard deviation and peak values for ice loads are calculated and summarized in Table 2. The relative errors of the simulated results with dense meshing are also included in brackets. It is found from Table 4 that there is no big difference between simulated results using dense mesh and medium. The differences regarding mean, standard deviation and peak forces are less than 0.4%, 1.5% and 3.0%. The simulation results converge well as the mesh size decreases. Considering the accuracy and efficiency of computation, it is suggested to use a medium mesh of ice block in the following simulations.

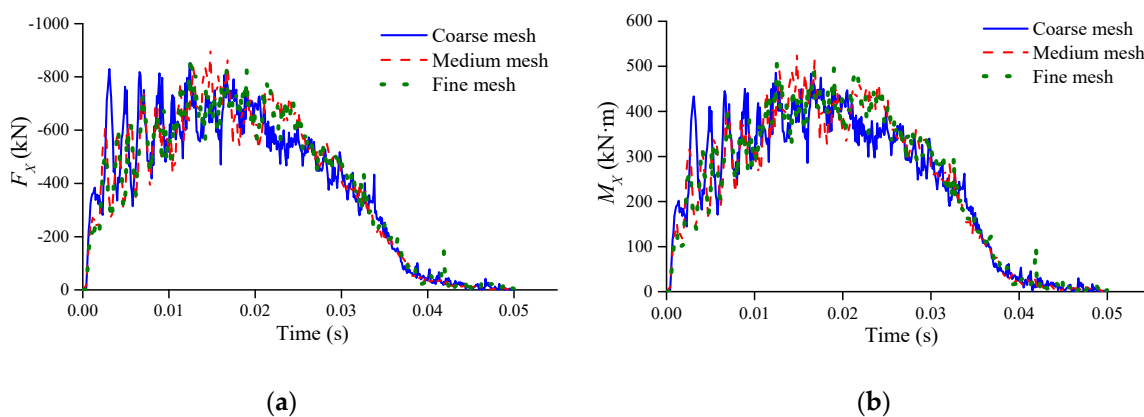


Figure 11. Time histories of ice loads for cases with different meshes. (a) The F_x with different meshes. (b) The M_x with different meshes.

Table 4. Comparison of ice loads for cases with different meshes.

Mesh	F_x (kN)			M_x (kN·m)		
	Mean	StDev	Peak	Mean	StDev	Peak
Coarse	-388 (0.8%)	264 (2.7%)	-852 (3.3%)	234 (1.7%)	154 (4.3%)	486 (4.3%)
Medium	-390 (0.3%)	272 (1.5%)	-907 (3.0%)	237 (0.4%)	163 (1.2%)	529 (4.1%)
Dense	-391 (-)	268 (-)	-881 (-)	238 (-)	161 (-)	508(-)

Figure 12 presents three stress nephograms for an ice block at time instants of 0.01, 0.03 and 0.05 s. Clearly, we can observe the process of ice colliding and leaving off the blade. There is no obvious crack and fracture failure inside the ice block. The main failure mode is local crushing and shearing under high strain rate during the mutual interaction. Massive pulverized ice pieces tend to splash around the interaction surface due to crushing and shearing actions.

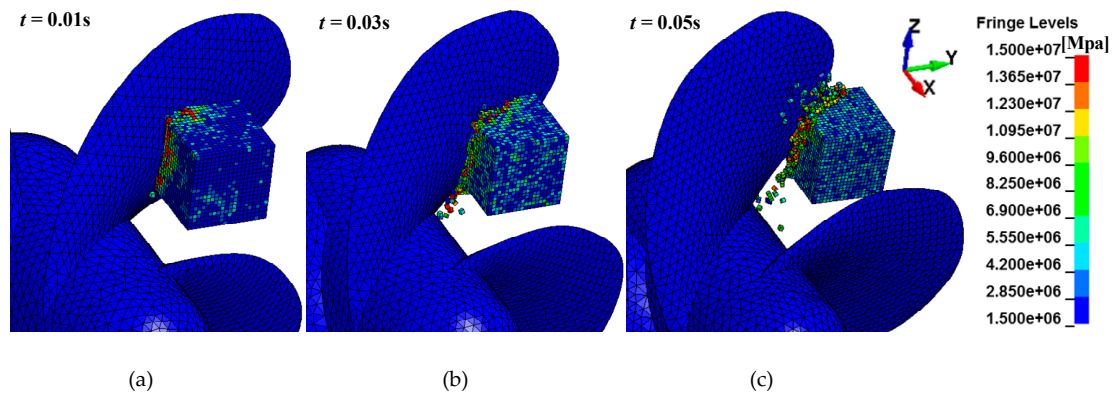


Figure 12. Stress nephograms during dynamic propeller-ice impacting process. (a) The ice impact simulation at 0.01s. (b) The ice impact simulation at 0.03s. (c) The ice impact simulation at 0.05s.

A time series of ice speeds in three directions is shown in Figure 13. It can be seen that the ice speed in the x direction decreases quickly during interaction with the blade and becomes steady after leaving away. At the same time, the ice speeds in both y and z direction are no longer zero due to the ice-crushing effect. The resulting speed in the y direction is larger than z direction. The acceleration of ice block is relatively large during 0.01~0.02 s because of significant impact between ice and blade. As shown in Figure 11, the force increases to the maximum. As the ice speed in the x direction decreases and the ice speed in the y direction increase, the trend of the ice block leaving off the blade becomes accelerative. When the ice starts to move away, the impact load drops with minor contact area.

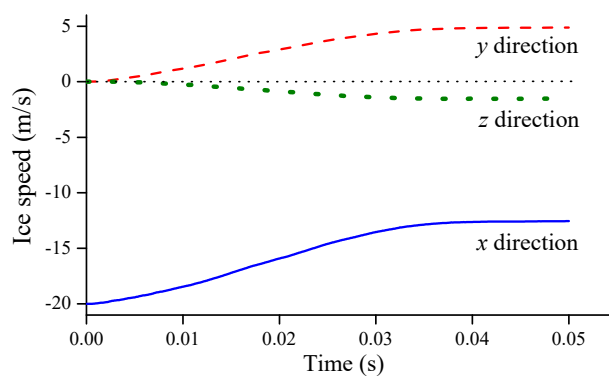


Figure 13. Variations of ice speed in three directions with time.

6. Parametric Study

This section focuses on the main factors which affect the simulation results. These factors include the rotational speed of the propeller, the rotational direction, the initial ice speed, the collision position and the contact area of the ice-propeller. The basic case has been given in Section 5. Only one factor is varied for analysis. The others are kept the same as those used in the basic case.

6.1. Effect of Rotational Speed

The influence of rotational speed of the propeller on impact load is then studied. The rotational speeds of 1 rps, 1.5rps, 2 rps, 2.5rps and 3 rps are selected for analysis. It is taken as 2 rps in the basic

case. The propeller rotates anticlockwise in these cases. The time domains simulated ice load F_x and moment M_x with different rotational speeds are presented in Figure 14. It can be found that rotational speed affects dynamic ice loads significantly. As the rotation speed increases, the ice load decreases in general. The comparison among the maximum ice loads related to different rotational speeds is also shown in Figure 14. The results illustrate the ice load (F_x and M_x) decreases with the increase of ice rotational speeds.

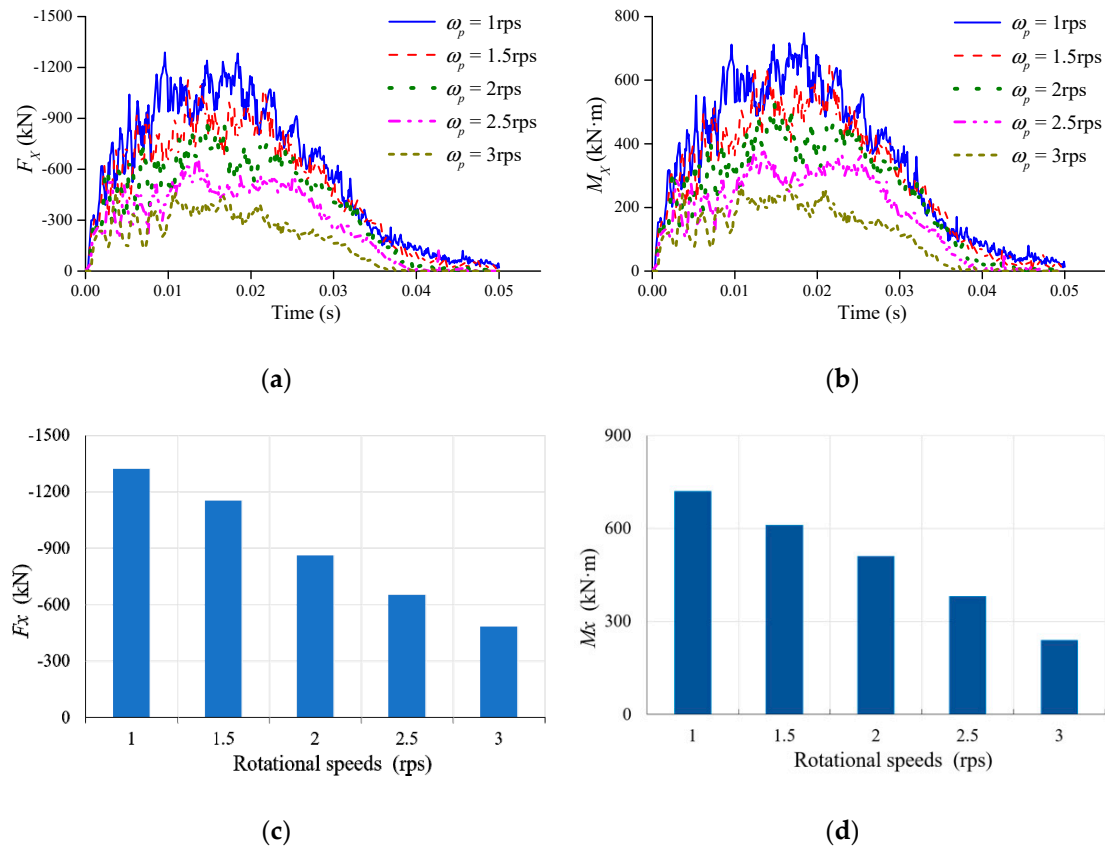


Figure 14. Time series of ice load F_x and M_x based on simulations with different rotation speeds. (a) The F_x with different rotation speeds. (b) The M_x with different rotation speeds. (c) The maximum F_x with different rotation speeds. (d) The maximum M_x with different rotation speeds.

Figure 15 gives the illustration of the ice block during interaction with the blades. When the propeller rotates anticlockwise, there exists an ice speed V_p along the negative y-axis at any contact point. The normal component of the ice speed V_p to the contact surface is defined as V_{pc} . The initial ice speed is V_i in the minus x direction. Its normal component is expressed with V_{ic} . Then the relative crushing speed between the ice block and blade ΔV_c is equal to $V_{ic} - V_{pc}$. The higher ΔV_c is, the higher the impact load becomes. As the propeller rotates fast, the speed component V_{pc} tends to ascend. This will lead to a decrease of the relative crushing speed ΔV_c and the resulting ice load.

The time series of ice block velocity in the x direction under different rotational speeds of the propeller is shown in Figure 16. Clearly, the ice block speed drops quickly with slow rotation of the propeller. This is mainly attributed to severe compression and high impact load acting on the ice block. The ice speed drops slowly at a high rotational speed of the propeller.

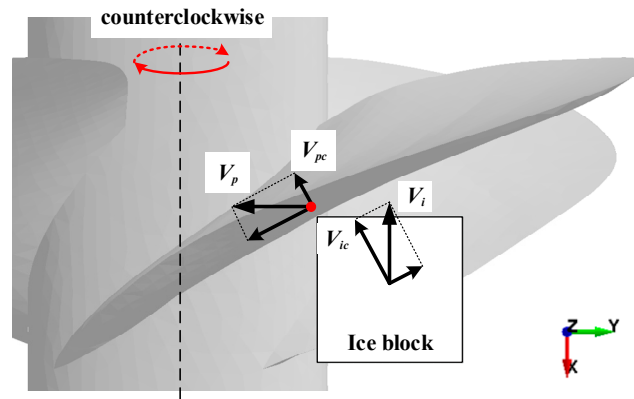


Figure 15. Schematic diagram of the speed during propeller–ice impacting process.

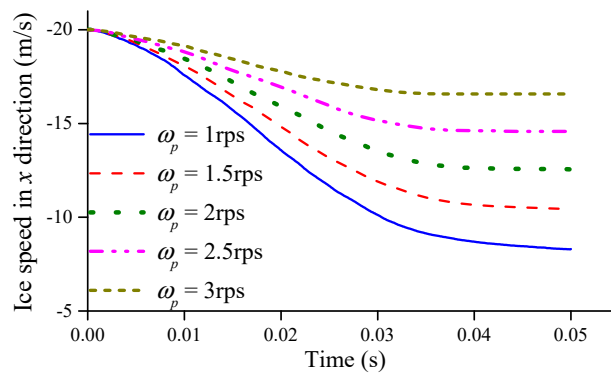


Figure 16. Time series of ice speed in the x direction based on simulations with different rotation speeds.

6.2. Effect of Rotational Direction

Rotational direction of the propeller is set to be anticlockwise in the basic study. This may affect the ice load as well and needs to be studied. The rotational direction is changed to clockwise with speeds of 1, 2 and 3 rps. Figure 17 shows the time series of the ice load F_x and moment M_x from the simulated case with different rotational speeds. It is found that ice force increases to peak value quickly and decreases slowly to zero. The peak ice force tends to increase as the rotational speed increase when the propeller rotates clockwise. This is totally opposite to the phenomenon observed from the basic case. It is interesting to see that the rate of ice force declines with high rotational speed more than that with low rotational speed.

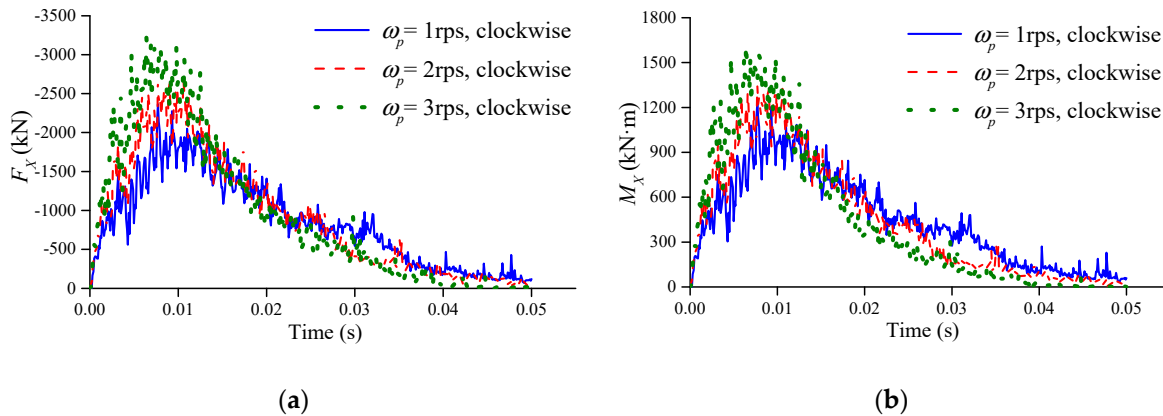


Figure 17. Time series of ice load F_x and M_x based on simulations with different rotation speeds for clockwise rotation. (a) The F_x with different rotation speed. (b) The M_x with different rotation speeds.

A schematic of ice block speed during collision with the propeller is presented in Figure 18. It could be seen that the relative crushing speed ΔV_c could be expressed by adding V_{ic} and V_{pc} . The crushing interaction of ice and blades becomes more severe when the rotational speed increases, which results in an increasing of ice load at loading stage. A time series of ice block speed in the x direction under different rotational speeds is plotted in Figure 19, which shows that the higher the rotational speed is, the faster ice block speed drops. It should be noted that the ice speed changes from negative to positive at around 0.03 s for two cases with rotational speeds at 2 and 3 rps, which means the ice block moves in an opposite direction under blade impact. However, movement direction of the ice block for the 1 rps case is kept the same as the original. This contributes to a higher ice load compared to the other cases.

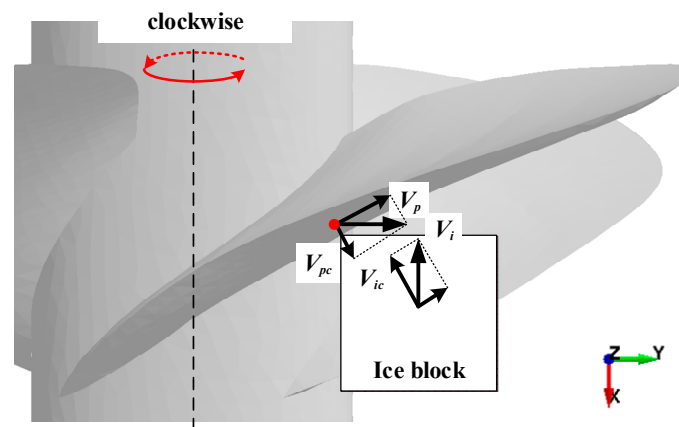


Figure 18. Schematic diagram of the speed during propeller–ice impacting process for clockwise rotation.

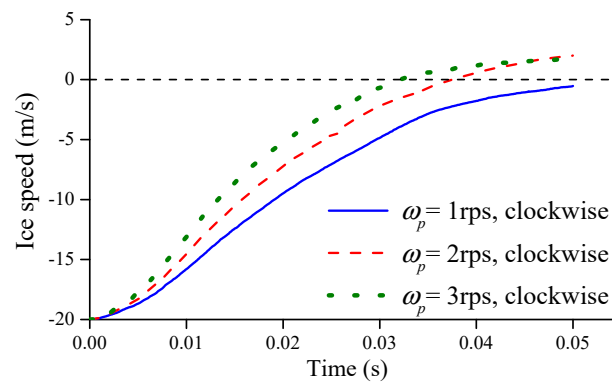


Figure 19. Time series of ice speed in the x direction based on simulations with different rotation speeds for clockwise rotation.

It shows a time series of ice loads under clockwise and anticlockwise rotation of the propeller with the same speed in Figure 20. It is observed that ice load is obviously higher in the clockwise case than anticlockwise. Moreover, the discrepancy increases as the rational speed increases.

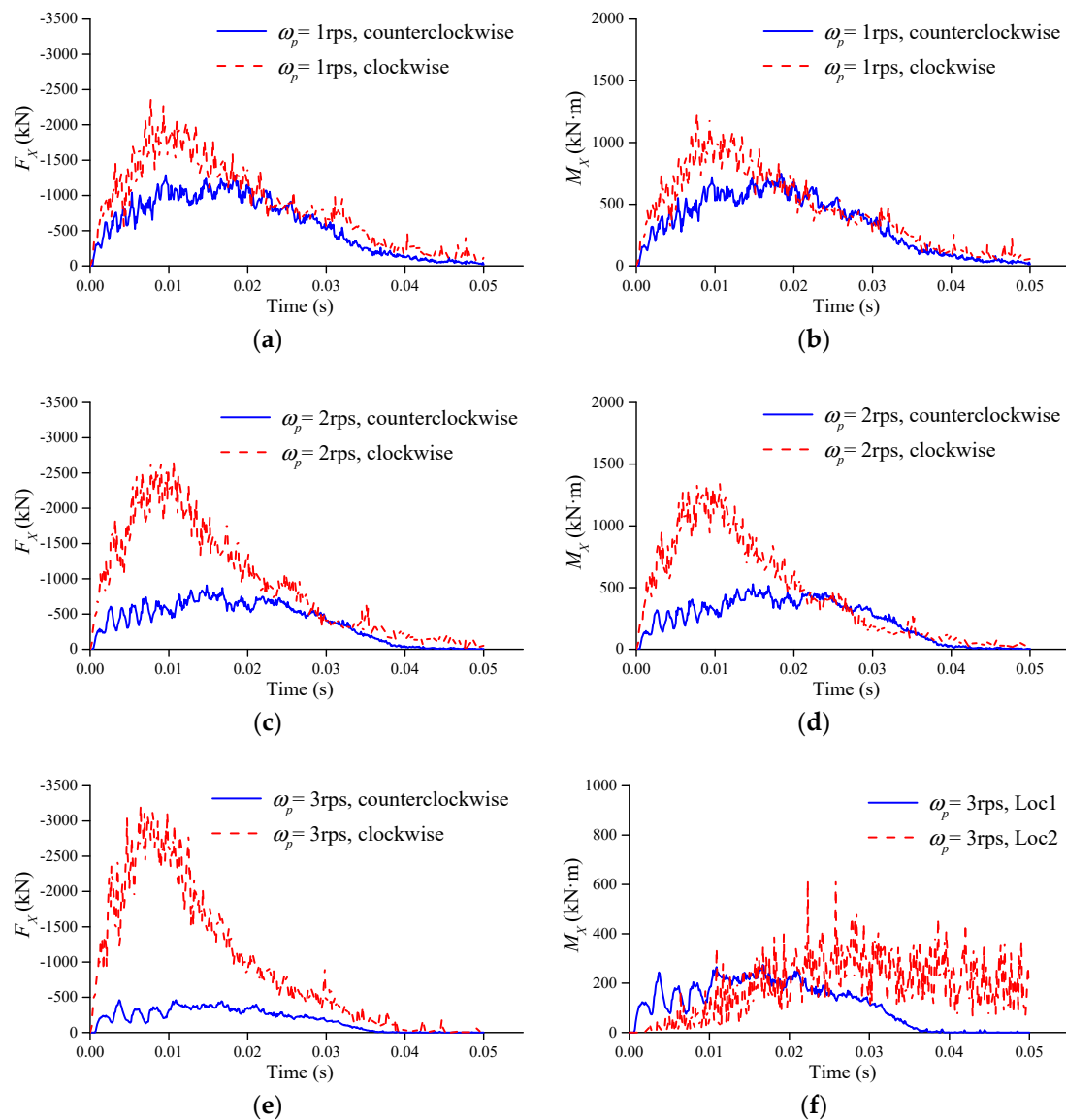


Figure 20. Time series of ice load F_x and M_x based on simulations with different rotation directions. (a) The F_x with 1 rps. (b) The M_x with (c) The F_x with 2 rps. (d) The M_x with 2 rps (e) The F_x with 3 rps. (f) The M_x with 3 rps.

6.3. Effect of Initial Ice Block Speed

The effect of the initial ice speed on the ice load exposed to the propeller is studied using five initial speeds. They are 10, 15, 20, 25 and 30 m/s, where 20 m/s is applied in the basic case. Figure 21 presents the time series of ice loads F_x and M_x from simulations with different initial ice speeds. It is clear that the ice load is very sensitive to the initial ice speed. As the initial speed increases, the ice crushing impact on the blades becomes more and more intense, which leads to a significant increase of ice loads at both loading and unloading periods. It is noted that using very low initial ice speed such as 10 m/s will give very low ice load even down to zero. The comparison among the maximum ice loads related to different ice initial speeds is also shown in Figure 21. The results illustrate the ice load (F_x and M_x) increases with the ice initial speeds rapidly.

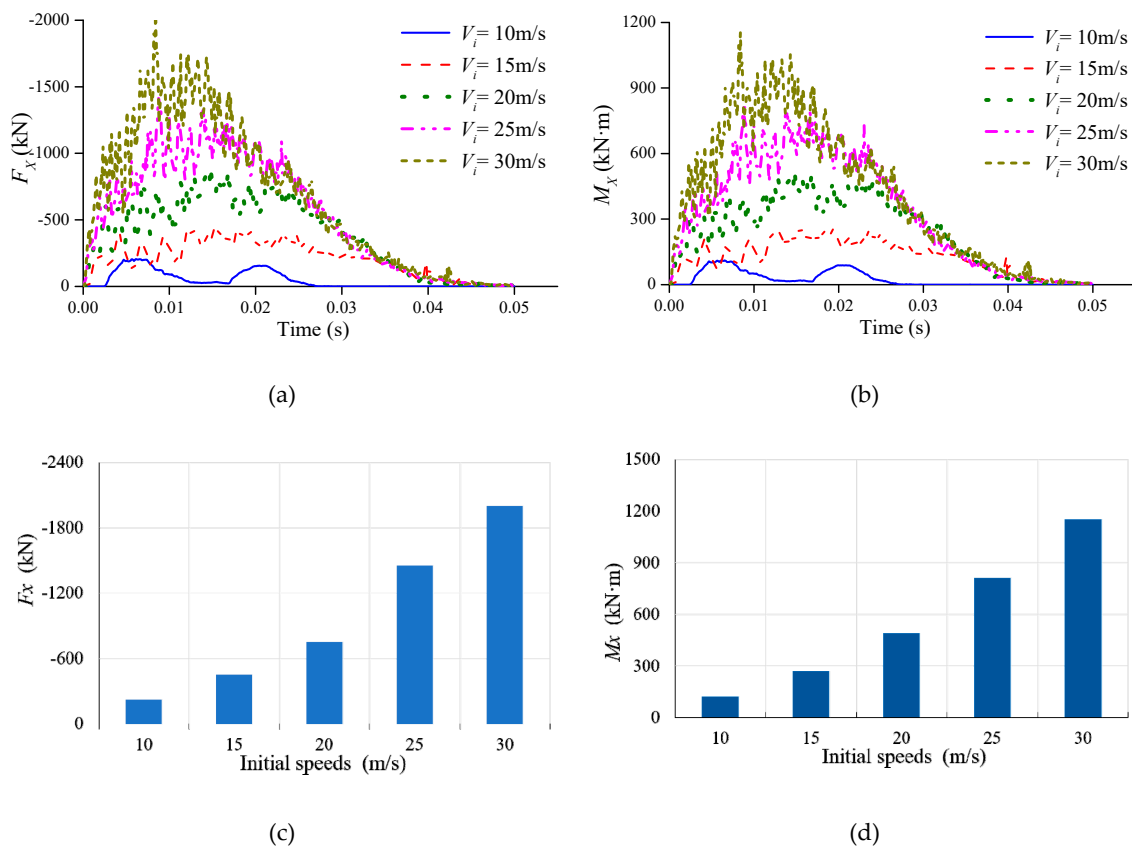


Figure 21. Time series of ice load F_x and M_x based on simulations with different ice initial speeds. (a) The F_x with different initial speeds. (b) The M_x with different speeds. (c) The maximum F_x with different initial speeds. (d) The maximum M_x with different initial speeds.

Figure 22 shows the trace of simulated ice forces for cases with different initial ice speeds. The rate of ice speed decline turns large as the initial speed increases. When the initial speed is set to 10 m/s, the ice speed is not affected too much. According to the simulation results, the relative ice and blade speed in the normal direction is calculated as $\Delta V_c = V_{ic} - V_{pc} \approx 0.187$ m/s, which is pretty low and thus could only produce ice load at a low level.

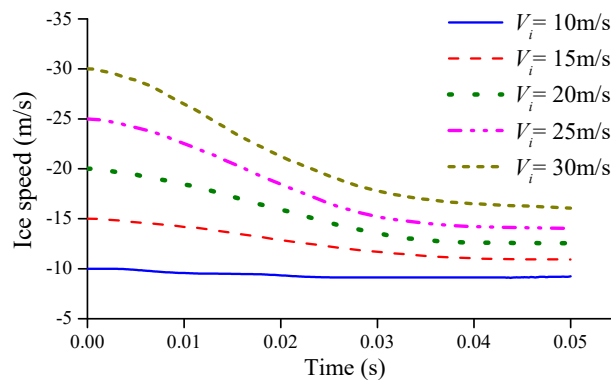


Figure 22. Time series of ice speed in the x direction based on simulations with different ice initial speeds.

6.4. Effect of Contact Position

The influence of ice contact position with the propeller on the ice load is studied. As shown in Figure 23, the contact position Loc1, which is marked by blade surface interaction with the ice block, is set as the initial position for the basic case. Then it is changed to Loc2, where blade edge collides with

ice block. In this section, Loc2 is used with three rotational speeds of 1, 2 and 3 rps in the simulation. Figure 24 presents the simulation results in the time domain, where the ice failure mode against the rotating propeller changes from crushing to milling. The ice block is fractured clearly under the cutting effect of the blade edge. This effect could be observed more severely as the ice rotational speed increases. The ice block is completely fragmented and cut in half in the condition of 3 rps rotational speed at 0.05 s.

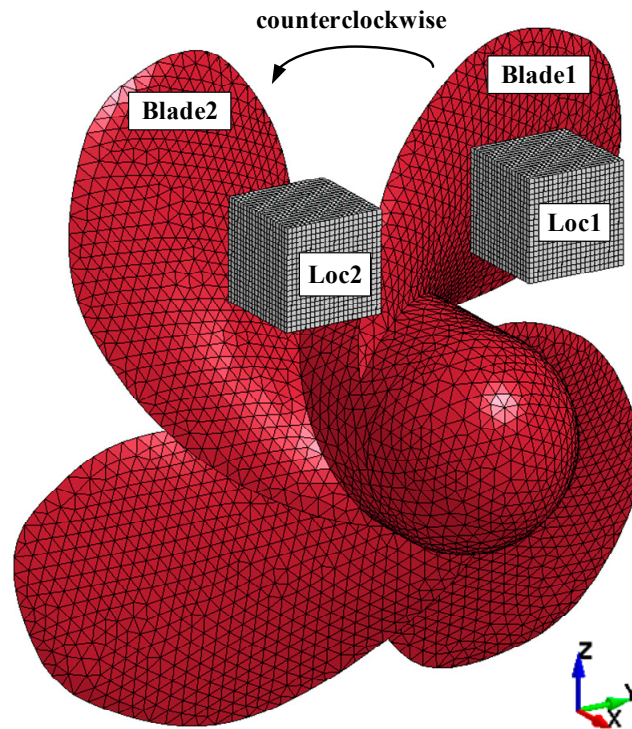


Figure 23. Numerical model of propeller-ice impacting at different collision locations.

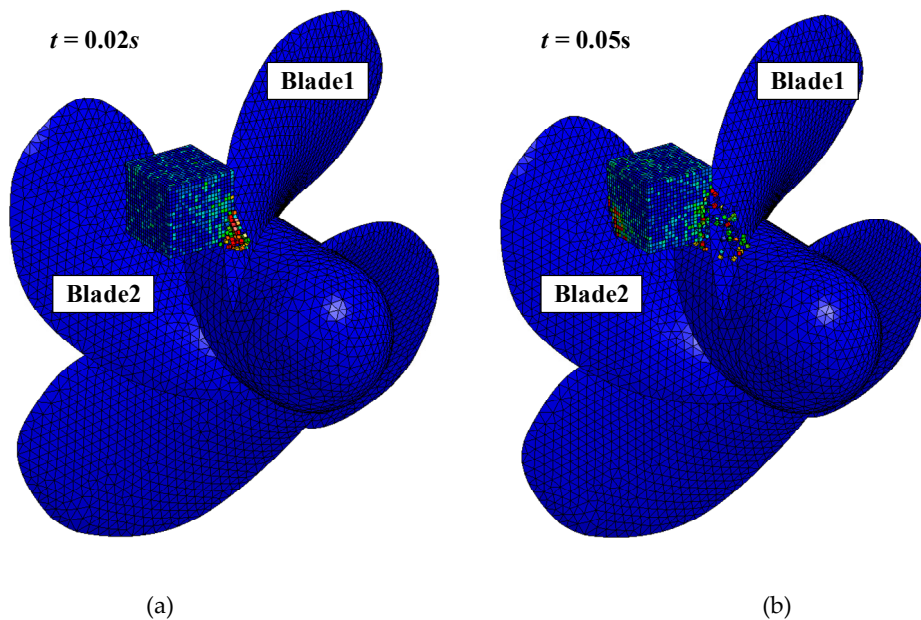


Figure 24. Cont.

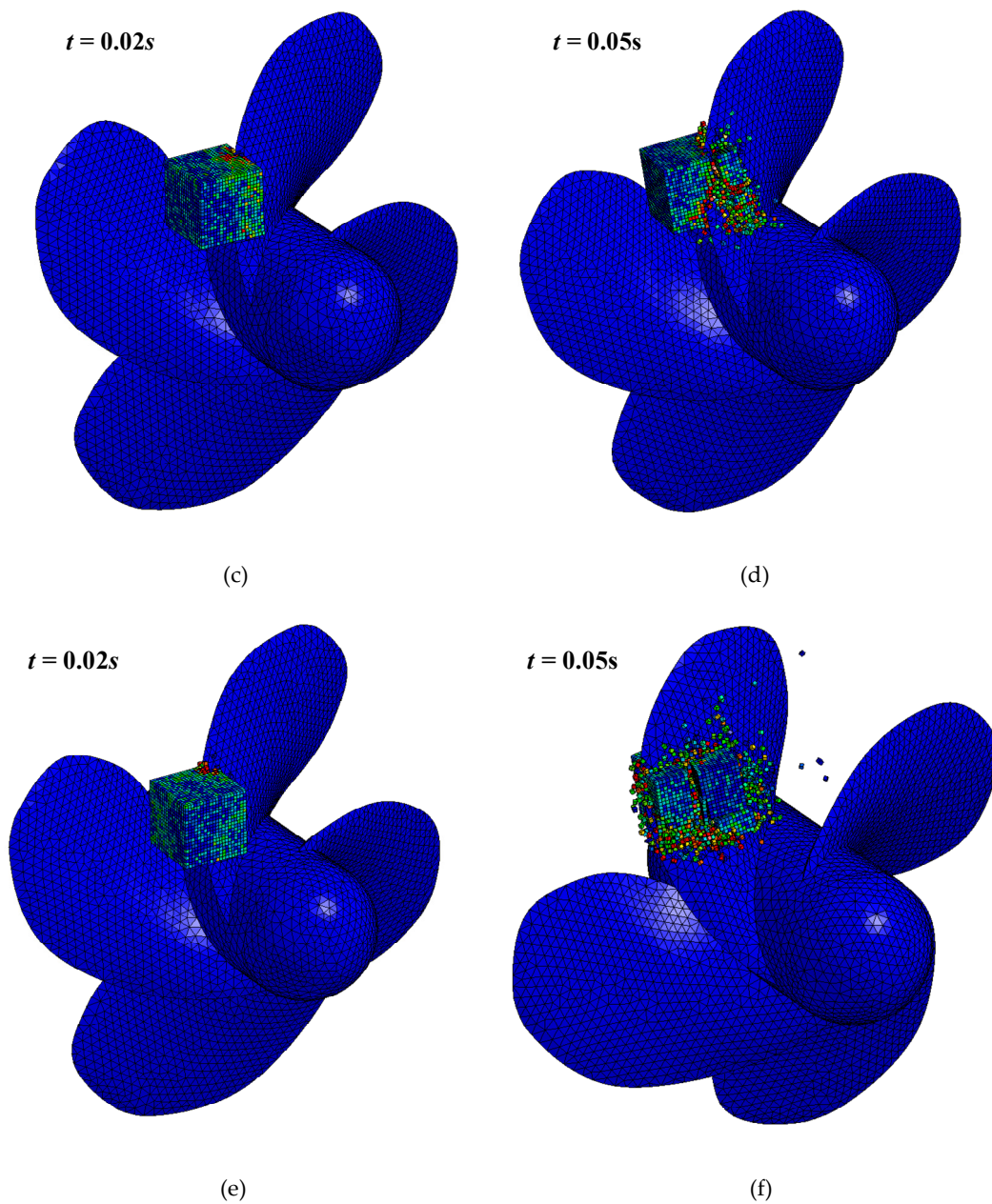


Figure 24. Stress nephograms of simulations for collision location at Loc2 with different rotation speeds. (a) The ice impact simulation at 0.02 s with 1 rps. (b) The ice impact simulation at 0.05 s with 1 rps. (c) The ice impact simulation at 0.02 s with 2 rps. (d) The ice impact simulation at 0.05 s with 2 rps. (e) The ice impact simulation at 0.02 s with 3 rps. (f) The ice impact simulation at 0.05 s with 3 rps.

Figure 25 shows the time series of ice loads F_x and moment M_x for cases with the same rotational speeds and different contact positions. We can find that ice loads acting on Loc1 are higher than that on Loc2 with the rotational speed of 1 rps, which means that the crushing effect is dominant over the milling effect. As the rotational speed increases, the ice load on Loc2 augments rapidly. When the speed increases to 3 rps, the ice load on Loc2 exceeds the ice load on Loc1. It should be noted that under the 1 rps condition, the ice load on Loc2 rises again after 0.037 s, which seems abnormal. The ice block gets milled with the blade 1 at first. The ice block does not leave off the blade 1 before it crushes with a second blade due to slow rotation of the propeller. This could be observed clearly from Figure 24a. The coming interaction with the blade 2 makes the ice load increase.

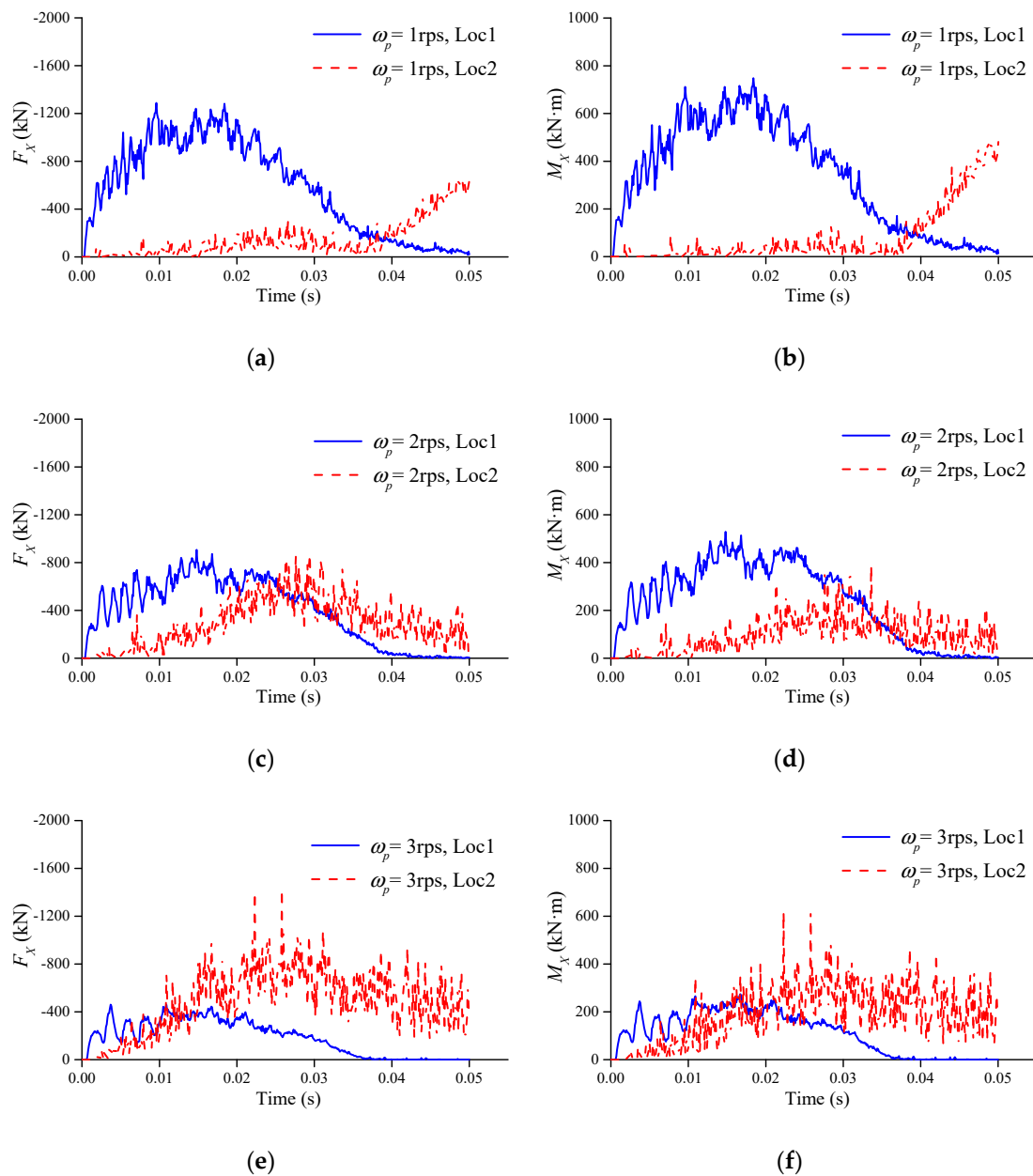


Figure 25. Time series of ice load F_x and M_x based on simulations with different collision locations. (a) The F_x with 1 rps. (b) The M_x with 1 rps. (c) The F_x with 2 rps. (d) The M_x with 2 rps. (e) The F_x with 3 rps. (f) The M_x with 4 rps.

Figure 26 shows the evolution of ice block speed in the x direction at the location of Loc2 with different propeller rotation speeds. It is clear that ice block speed drops rapidly as the milling impact increases. The sudden drop of ice block speed for the 1 rps case at 0.037 s is also found in Figure 26. This is also due to increased impact load when colliding with both blades 1 and 2.

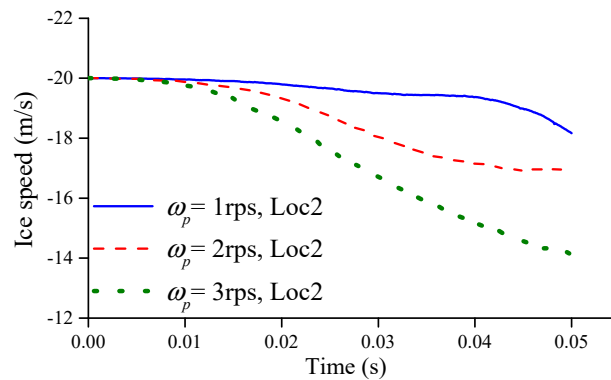


Figure 26. Time series of ice speed in the x direction based on simulations with different rotation speeds for collision location at Loc2.

6.5. Effect of Ice-Propeller Contact Area

In order to study the effect of ice-propeller contact area, we build up three types of ice block with different shape and the same weight as well as volume for simulation. Cube ice block is used in the basic study. Two other shapes are in pyramid as shown in Figure 27. Figure 28 shows the time series of ice loads F_x and moment M_x for cases using different ice blocks. The results show that the ice loads exposed to cube, paramid1 and pyramid 2 are in descending order. This means that the ice load increases as the contact area increases. Figure 29 shows the evolution of ice block speed in the x direction using different ice blocks. It is found that ice block speed drops rapidly as the contact area between ice and propeller increases. The stress nephograms for three ice block collisions at 0.04s are given in Figure 30, where the crushing phenomenon could be clearly observed.

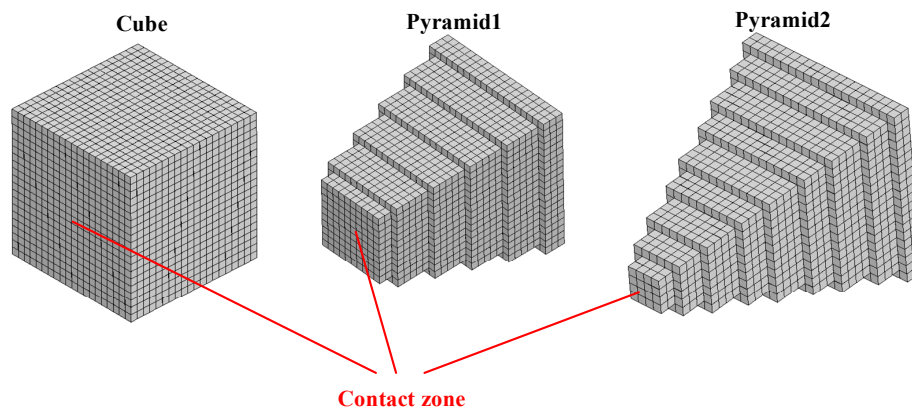


Figure 27. The models of three blocks with different shapes.

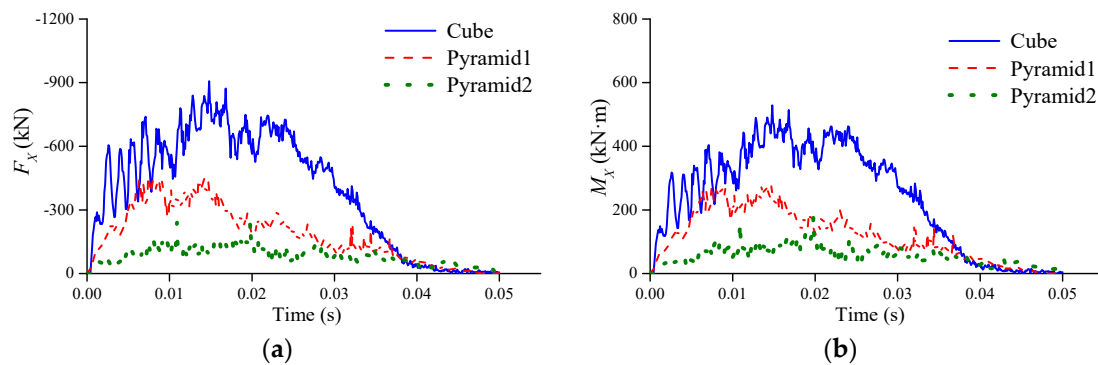


Figure 28. Time series of ice load F_x and M_x based on simulations with different ice blocks. (a) The F_x with different ice blocks. (b) The M_x with different ice blocks.

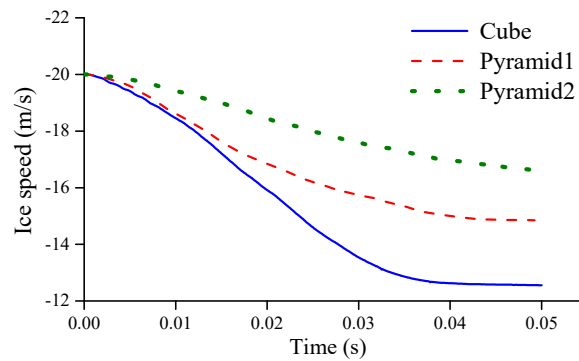


Figure 29. Time series of ice speed in the x direction based on simulations with different ice blocks.

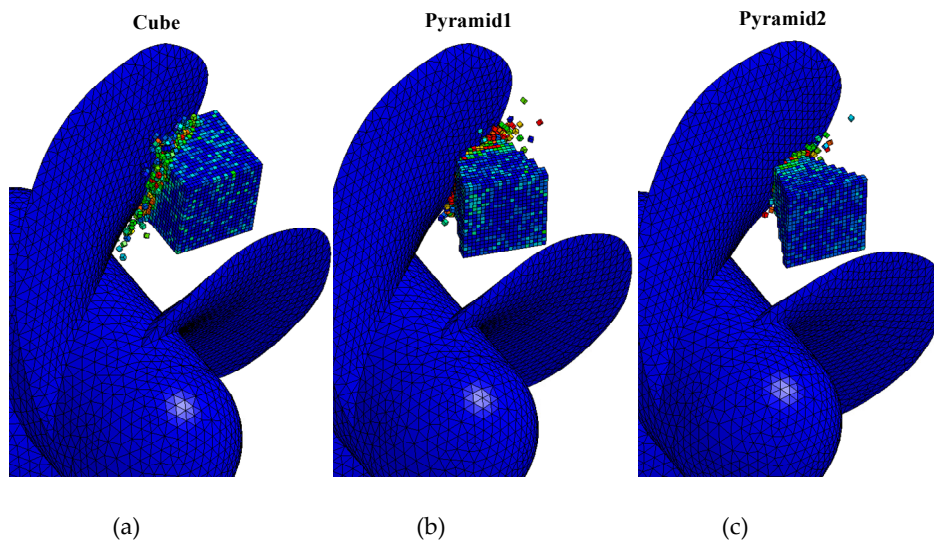


Figure 30. Stress nephograms of simulations for ice blocks with different shapes. (a) Impact simulation with cube ice block. (b) Impact simulation with pyramid1 ice block. (c) Impact simulation with pyramid2 ice block.

7. Conclusions

In this paper, a numerical tool based on cohesive element method is applied to simulate an ice-propeller collision process with the assistance of commercial finite element software LS-DYNA. The convergence study with respect to the meshing size of the ice block is conducted. Then, the effects of the rotation speed and the direction of the propeller, the contact position, the initial ice speed and the contact area of the ice on the resulting impact ice load are analyzed in detail. The main conclusions are summarized as follows:

- (1) Different ice-failure modes could be observed in the simulation under the crushing and shearing action.
- (2) Ice loads are influenced by using different ice meshing sizes to some extent. The dynamics of simulated ice loads become weak as the meshing size decreases.
- (3) Based on the parametric study, the ice loads are significantly affected by all five factors considered. The dominant ice loads increase by decreasing rotational speed, increasing initial ice speed and contact area and changing rotational direction from clockwise to counterclockwise.
- (4) When ice interacts with the edge of the blade under low rotational speed of the propeller, an ice milling phenomenon occurs. It is possible that two blades will interact with the ice block simultaneously under slow rotation of the propeller. As the rotational speed increases, the ice load acting on the blade surface will exceed the milling load on the blade edge.

The simulation results show the present numerical method could capture the ice failure mode and calculate the ice-propeller collision loads. It is beneficial to understand the propeller-ice collision process. However, all conclusions have been drawn according to the present simulation tool. The simulation is expected to be refined in the future.

Author Contributions: Conceptualization, L.Z.; methodology, L.Z.; software, L.Z.; formal analysis, L.Z. and F.W.; investigation, L.Z.; resources, F.D.; data curation, S.D.; writing—original draft preparation, L.Z. and F.W.; writing—review and editing, H.Y.; visualization, Y.Z.; supervision, L.Z.; project administration, L.Z.; funding acquisition, L.Z. and S.D.

Funding: This research was funded by the National Natural Science Foundation of China, grant number 51809124, 51911530156; Natural Science Foundation of Jiangsu Province of China, grant number BK20170576; Natural Science Foundation of the Higher Education Institutions of Jiangsu Province of China, grant number 17KJB580006; State Key Laboratory of Ocean Engineering (Shanghai Jiao Tong University), grant number 1704 and 1807.

Conflicts of Interest: The authors declare no conflicts of interest.

References

1. Veitch, B. Predictions of Ice Contact Forces on a Marine Screw Propeller during the Propeller-ice Cutting Process. *Acta Polytech. Scandi-Navica Mech. Eng. Ser.* **1995**, *118*, 116–119.
2. Searle, S.; Veitch, B.; Bose, N. Ice-class propeller performance in extreme conditions. *Trans. Soc. Nav. Archit. Mar. Eng.* **1999**, *107*, 127–152.
3. Moores, C.; Veitch, B.; Bose, N.; Jones, S.J.; Carlton, J. Multi-component blade load measurements on a propeller in Ice. *Trans. Soc. Nav. Archit. Mar. Eng.* **2002**, *110*, 169–188.
4. Akinturk, A.; Jones, S.J.; Duffy, D.; Rowell, B. Ice loads on azimuthing podded propulsors. In Proceedings of the 23rd International Conference on Offshore Mechanics and Arctic Engineering, New York, NY, USA, 20–25 June 2004; pp. 903–910.
5. Wang, J.; Akinturk, A.; Jones, S.J.; Bose, N.; Kim, M.C.; Chun, H.H. Ice loads acting on a model podded propeller blade. *J. Offshore Mech. Arct. Eng.* **2005**, *129*, 236–244. [[CrossRef](#)]
6. Wang, J.; Akinturk, A.; Bose, N. Numerical prediction of model podded propeller-ice interaction loads. In Proceedings of the 25th International Conference on Offshore Mechanics and Arctic Engineering, Hamburg, Germany, 4–9 June 2006; pp. 667–674.
7. Wang, J.; Akinturk, A.; Bose, N. Numerical prediction of propeller performance during propeller-ice interaction. *Mar. Technol.* **2009**, *46*, 123–139.
8. Ye, L.Y.; Wang, C.; Chang, X.; Zhang, H.Y. Propeller-ice contact modeling with peridynamics. *Ocean Eng.* **2017**, *139*, 54–64. [[CrossRef](#)]
9. Wang, C.; Xiong, W.P.; Chang, X.; Ye, L.Y.; Li, X. Analysis of variable working conditions for propeller-ice interaction. *Ocean Eng.* **2018**, *156*, 277–293. [[CrossRef](#)]
10. Brouwer, J.; Hagesteijn, G.; Bosman, R. Propeller-Ice Impacts Measurements with a Six-Component Blade Load Sensor. In Proceedings of the Third International Symposium on Marine Propulsors smp'13, Tasmania, Australia, 5–8 May 2013.
11. Wind, J. The dimensioning of high power propeller systems for arctic ice breakers and icebreaking vessels. *Int. Shipbuild. Prog.* **1984**, *31*, 131–148. [[CrossRef](#)]
12. Kannari, P. *Ice Loads on Propellers in Baltic Conditions*; MARC Report D-103; Helsinki University of Technology: Espoo, Finland, 1994. (In Finnish)
13. Khan, A.G.; Hisette, Q.; Streckwall, H. Numerical investigation of propeller-ice interaction effects. In Proceedings of the 28th International Ocean and Polar Engineering Conference, Sapporo, Japan, 10–15 June 2018.
14. Hu, Z.K.; Gui, H.B.; Xia, P.P.; Wang, J.X. Finite Element Analysis of Ship Propeller Strength under Ice Loads. *Ship Eng.* **2013**, *35*, 12–15.
15. Hillerborg, A.; Modéer, M.; Petersson, P.E. Analysis of crack formation and crack growth in concrete by means of fracture mechanics and finite elements. *Cem. Concr. Res.* **1976**, *6*, 773–781. [[CrossRef](#)]
16. Konuk, I.; Yu, S. A cohesive element framework for dynamic ice-structure interaction problems: Part III—Case studies. In Proceedings of the 29th International Conference on Offshore Mechanics and Arctic Engineering, Shanghai, China, 6–11 June 2010; pp. 801–809.

17. Lu, W.; Lubbad, R.; Løset, S. Simulating ice-sloping structure interactions with the cohesive element method. *J. Offshore Mech. Arct. Eng.* **2014**, *136*, 031501. [[CrossRef](#)]
18. Wang, F.; Zou, Z.J.; Zhou, L.; Ren, Y.Z.; Wang, S.Q. A simulation study on the interaction between sloping marine structure and level ice based on cohesive element model. *Cold Reg. Sci. Technol.* **2018**, *149*, 1–15. [[CrossRef](#)]
19. Serdar, T.I.; Ankush, K.; Jeom, K.P. A new constitutive equation on ice materials. *Ships Offshore Struct.* **2017**, *12*, 610–623.
20. Hilding, D.; Forsberg, J.; Gürtner, A. Simulation of ice action loads on offshore structures. In Proceedings of the 8th European LS-DYNA Users Conference, Strasbourg, France, 23–24 May 2011; pp. 1–12.
21. Jonas, W.; Sandro, E.; Henry, P.; Sören, E. The influence of the bow design on structural response due to ice loading. *Ships Offshore Struct.* **2018**, *13* (Suppl. 1), 302–311.
22. Mi, Y.; Crisfield, M.A.; Davies, G.A.O.; Hellweg, H.B. Progressive delamination using interface elements. *J. Compos. Mater.* **1998**, *32*, 1246–1272. [[CrossRef](#)]
23. Emerson, A.; Sinclair, L. Propeller design and model experiments. *Trans. North East Coast Inst. Eng. Shipbuild.* **1978**, *94*, 199–234.
24. Kim, H.; Daley, C.; Colbourne, B. A numerical model for ice crushing on concave surfaces. *Ocean Eng.* **2015**, *106*, 289–297. [[CrossRef](#)]
25. Wang, F.; Zou, Z.; Zhou, L.; Wang, Y.; Yu, H.; Zhang, H. Numerical simulation of ice milling loads on propeller blade with cohesive element method. *Brodogradnja* **2019**, *70*, 109–128. [[CrossRef](#)]



© 2019 by the authors. Licensee MDPI, Basel, Switzerland. This article is an open access article distributed under the terms and conditions of the Creative Commons Attribution (CC BY) license (<http://creativecommons.org/licenses/by/4.0/>).