

# Anomalous Oceanic Conditions in the Central and Eastern North Pacific Ocean during the 2014 Hurricane Season and Relationships to Three Major Hurricanes

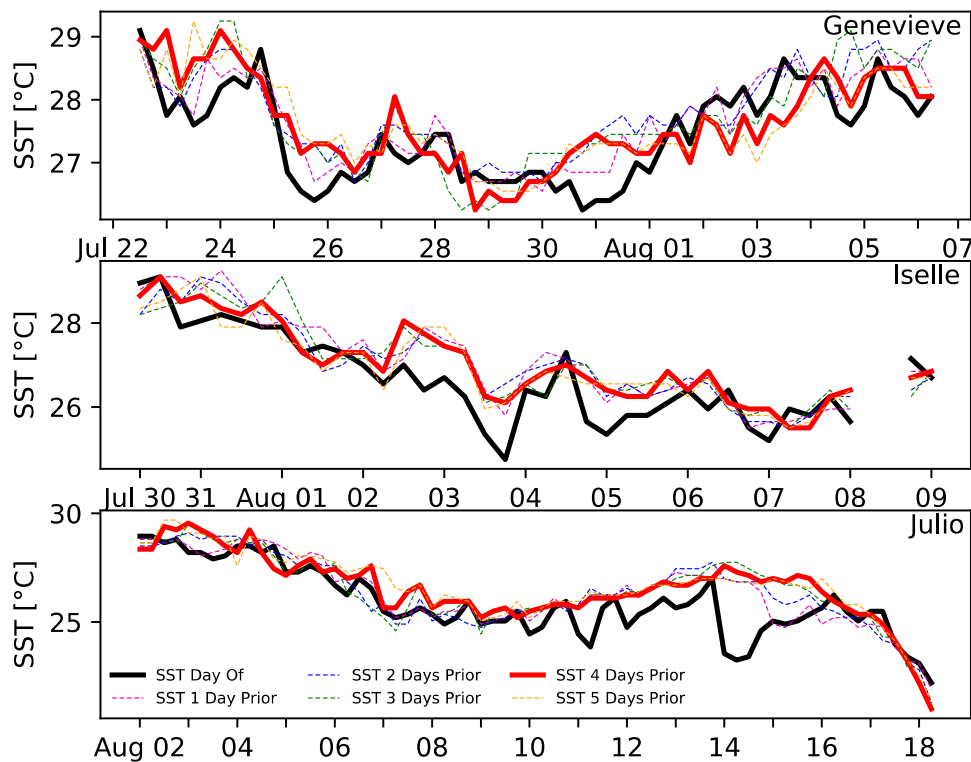
Victoria L. Ford <sup>1,2,\*</sup>, Nan D. Walker <sup>1</sup> and Iam-Fei Pun <sup>3</sup>

<sup>1</sup> Department of Oceanography and Coastal Sciences, Coastal Studies Institute Earth Scan Laboratory, Louisiana State University, Baton Rouge, LA 70803; [nanwalker@gmail.com](mailto:nanwalker@gmail.com)

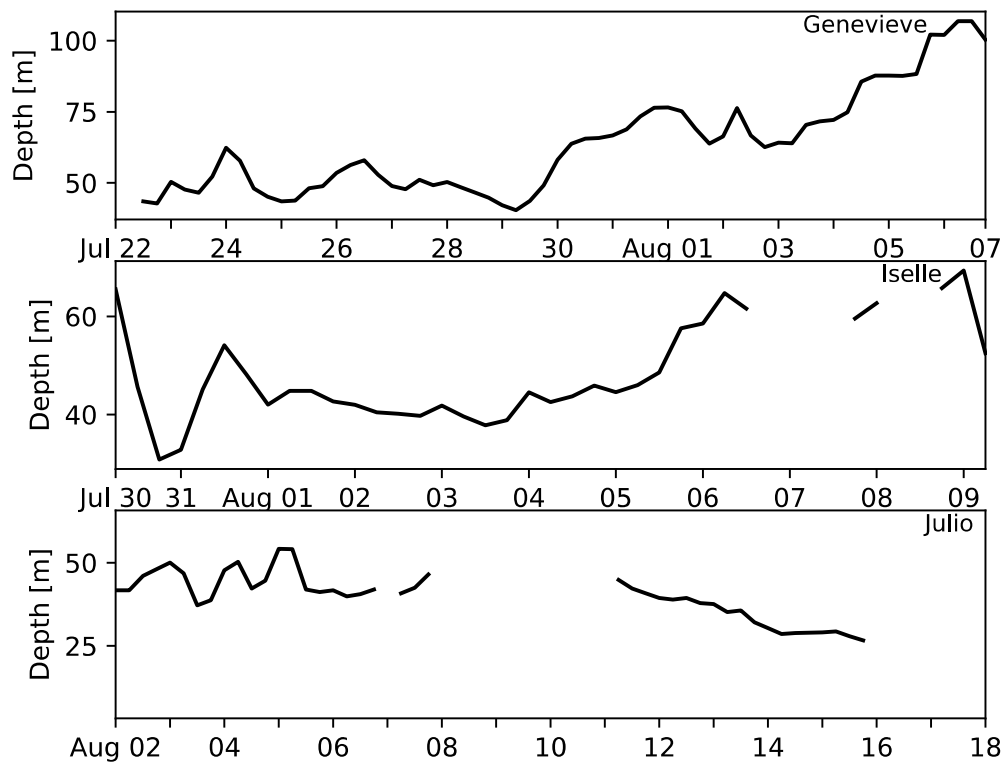
<sup>2</sup> Now at: Climate Science Lab, Department of Geography, Texas A&M University, College Station, TX 77845

<sup>3</sup> Graduate Institute of Hydrological and Oceanic Sciences, National Central University, Taoyuan, Taiwan; [ipun@ncu.edu.tw](mailto:ipun@ncu.edu.tw)

\* Correspondence: [victoriaford@tamu.edu](mailto:victoriaford@tamu.edu)



**Figure S1.** Along-track SST for Hurricanes Genevieve (top), Iselle (middle), and Julio (bottom) at 0 to 5 days prior to data extraction. Day of data (0 days prior) highlighted in thick black line, while 4 days prior outlined in thick red line.



**Figure S2.** Along-track depth of the 26°C isotherm for Hurricanes Genevieve (top), Iselle (middle), and Julio (bottom). Gaps in coverage indicate along-track position where depth of the 26°C isotherm is not applicable: SSTs less than 26°C or landfall event (marked for Iselle).