

Article

A Conceptual Model for Geo-Online Exploratory Data Visualization: The Case of the COVID-19 Pandemic

Anna Bernasconi ^{1,*}  and Silvia Grandi ² ¹ Dipartimento di Elettronica, Informazione e Bioingegneria, Politecnico di Milano, 20133 Milan, Italy² Dipartimento di Scienze Statistiche “P. Fortunati”, Alma Mater Studiorum Università di Bologna, 40126 Bologna, Italy; s.grandi@unibo.it

* Correspondence: anna.bernasconi@polimi.it

Abstract: Responding to the recent COVID-19 outbreak, several organizations and private citizens considered the opportunity to design and publish online explanatory data visualization tools for the communication of disease data supported by a spatial dimension. They responded to the need of receiving instant information arising from the broad research community, the public health authorities, and the general public. In addition, the growing maturity of information and mapping technologies, as well as of social networks, has greatly supported the diffusion of web-based dashboards and infographics, blending geographical, graphical, and statistical representation approaches. We propose a broad conceptualization of Web visualization tools for geo-spatial information, exceptionally employed to communicate the current pandemic; to this end, we study a significant number of publicly available platforms that track, visualize, and communicate indicators related to COVID-19. Our methodology is based on (i) a preliminary systematization of actors, data types, providers, and visualization tools, and on (ii) the creation of a rich collection of relevant sites clustered according to significant parameters. Ultimately, the contribution of this work includes a critical analysis of collected evidence and an extensive modeling effort of Geo-Online Exploratory Data Visualization (Geo-OEDV) tools, synthesized in terms of an Entity-Relationship schema. The COVID-19 pandemic outbreak has offered a significant case to study how and how much modern public communication needs spatially related data and effective implementation of tools whose inspection can impact decision-making at different levels. Our resulting model will allow several stakeholders (general users, policy-makers, and researchers/analysts) to gain awareness on the assets of structured online communication and resource owners to direct future development of these important tools.

Keywords: COVID-19; conceptual modeling; dashboards; web-based GIS; crisis communication



Citation: Bernasconi, A.; Grandi, S. A Conceptual Model for Geo-Online Exploratory Data Visualization: The Case of the COVID-19 Pandemic. *Information* **2021**, *12*, 69. <https://doi.org/10.3390/info12020069>

Academic Editor: Davide Buscaldi
Received: 31 December 2020
Accepted: 29 January 2021
Published: 6 February 2021

Publisher’s Note: MDPI stays neutral with regard to jurisdictional claims in published maps and institutional affiliations.



Copyright: © 2021 by the authors. Licensee MDPI, Basel, Switzerland. This article is an open access article distributed under the terms and conditions of the Creative Commons Attribution (CC BY) license (<https://creativecommons.org/licenses/by/4.0/>).

1. Introduction

By addressing public institutions—from a global to a local scale—the World Health Organization (WHO) Guidelines [1] acknowledge that communication expertise has become essential to outbreak control, as much as epidemiological training and laboratory analysis practices. Indeed, failing in communication might significantly increase the possibility to delay the outbreak control, undermining public trust and compliance, leading to unnecessarily prolonged economic, social, and political turmoil. Ultimately, mistakes in outbreak communication might weaken the rapid containment of an epidemic (i.e., limitation of mortality rates and of related socio-economic/environmental impacts [2,3]). Among the communication tools that address WHO’s guidelines—despite not specifically cited—geographical visualizations can be acknowledged as highly significant since they can solidly support an assessment of the spatial distribution and diffusion patterns spanning a variety of cultures, political systems, as well as levels of education/economic development [1].

During an emergency, communication that takes place through visualization tools responds to multiple perspectives: first, it answers the need for instant information from

the whole research community and the public health (and other) authorities, in order to understand, monitor, and plan actions and policies. Second, it addresses the general public by implementing the principle of transparency and targeting the sense of curiosity and socialization of emotions. Third, data visualization can appease the sense of fear and uncertainty of people, typical of periods of crisis. Moreover, as in the general case of risk management, geographical visualization addresses the risk communication principles, because it can strengthen the population's risk awareness and can motivate precautionary actions.

In this scenario, the geographical mapping of outbreaks phenomena deals with the challenges of representing risks in a way that people can understand and interpret correctly (see in [4]). For instance, to inform the public about flood risks, the EU Flood Directive 2007/60/EC [5] encourages the use of flood maps; similarly, even if not directly specifying the use of cartographic representation, WHO Outbreak communication guidelines [1] strongly encourage trust-building, transparency, understanding of people's needs, and planning.

In response to the coronavirus disease (COVID-19) outbreak, several organizations, as well as private citizens, considered the opportunity to design and publish a set of geography-related visualization instruments—addressed in this paper as the broad category named *Geo-spatial Online Explanatory Data Visualization* (Geo-OEDV) tools—for the communication of disease data supported by the spatial dimension. Indeed, mapping spatial aspects of diseases helps people to unravel puzzling aspects of disease outbreaks [6]. This interestingly applies also to the case of the COVID-19 pandemic: the evolution of the disease in time and space has been paired with a need for awareness and of effective visualization of the dynamics of epidemic patterns. At the same time, Information and Communication Technologies (ICT), Web Geographical Information Systems (WebGIS), as well as social media networks have become more and more mature and spread, while, volunteered geographical information and public geography discourse [7,8] are mainstreaming. During the beginning of 2020, such circumstances have led to a growing diffusion of a varied set of cartographic and communication tools, such as web-based dashboards, WebGIS, and infographics, blending geographical, graphical, and statistical representation approaches.

COVID-19 has served as a case study providing interesting indications on the maturity and evolution of the visualization of spatial data. Incidentally, choices made on geographical tracking technologies to effectively communicate online the COVID-19 outbreak, and express both directly and indirectly the level of geographical knowledge of professionals, developers, or website content managers, and of the wider population.

Although the use of Geo-OEDV has been widespread during the COVID-19 pandemic outbreak, no efforts directed to developing a general conceptual model have been proposed yet. By assuming the importance of an in-depth understanding of the tools that are currently driving the communication of the pandemic to the broad public (in its diffusion and implications), with this research we aim to fill this gap. To this end, we defined a series of research questions that guided the following conceptualization:

RQ1. *What are the main trends in the publicly available Geo-OEDV tools?*

RQ2. *Is the COVID-19 pandemic characterized by Geo-OEDV support targeted to users with specific expertise?*

RQ3. *Is it possible to capture the domain of Geo-OEDV tools with a general model, clearly outlining the dimensions of their creation and dissemination?*

We thus devised a conceptual model that can be used as a starting framework for deeper analyses and development of Geo-OEDV. Geo-OEDV includes next-generation tools for communicating pandemics (and, more broadly, emergencies) in an informed fashion, where users of different expertise levels can understand the phenomenon with diverse degrees of detail. As an additional research question, we posed **RQ4:** *What are the benefits of proposing a conceptual model for Geo-OEDV tools?* We argue that a general conceptual model can be translated into a series of positive implications to provide support for different stakeholders, i.e., general users such as citizens and entrepreneurs (with

impact on their own lives or small businesses), large companies, research centers (with impact on sub-systems of society), decision-makers in the health system, and policy-makers (whose decisions impact the large part of the society).

The structure of this paper is as follows. We first provide a critical discussion of recent Geo-OEDV-based literature (Section 2). Section 3 presents a conceptualization of the actors, data types, data providers, and tools that are currently employed for the purposes of pandemic-related visualization. Section 4 grounds our proposed taxonomy on the real instance of COVID-19 dashboards, for which we collected around 120 cases and defined the dimensions to be analyzed. Building on this data collection, in Section 5 we propose our results: a critical analysis of collected evidence (addressing RQ1), a focus on expert Geo-OEDV genomic and clinical tools (addressing RQ2), and an extensive modeling effort of Geo-OEDV in terms of an Entity-Relationship schema (answering RQ3). In conclusion, we discuss our contributions and future directions in Section 6 (proposing our answers to RQ4).

2. A Brief Review of Geo-Oedv-Related Literature

Kamel, Boulos, and Geraghty [9] recall that the earliest visualization of the relationship between location and health aspects dates back to 1694, related to the plague containment in Italy. Disease studies have revealed strong spatiality aspects in terms of location and diffusion. The value of maps as a tool in epidemiology as well as in medical and health geography blossomed over more than 200 years ago. Maps have been used to understand and track infectious diseases spread, such as the one of yellow fever, cholera, and influenza in 1918 [9–12]. The digital turn started in the 1960s allowed—through GIS systems—to significantly increase the possibilities for analyzing, visualizing, and detecting patterns of disease and their socio-economic and environmental impacts.

Lyseen et al. [13] found that, in health GIS-related literature, 28.7% of papers focused on infectious disease mapping. During the 2000s, GISs underwent a profound development, becoming web-based tools with increasingly more interactive and customizable possibilities, including the display of maps integrated within other structured information, acquiring the denomination of “geo-dashboard”.

In [3], we have provided a preliminary analysis on the convergence of different information levels (spatial, statistical, genomic, and epidemiological) within a unique instrument of analysis, which uses design and mapping solutions to communicate the COVID-19 crisis. The first geo-dashboard for COVID-19 cases has been implemented at the Johns Hopkins University (Baltimore, USA) to analyze the data collected and hosted at the Center for Systems Science and Engineering (CSSE) [14]. This interactive tool has been widely adopted since very early during the first wave of the pandemic. It allows inspection of the numbers of infections, deaths, and recoveries within an interactive map; for each location, a graph details the progress of infections over time. The dashboard employs data from five authoritative sources: the World Health Organization, the European Centre for Disease Prevention and Control, the US Centers for Disease Control and Prevention, the National Health Commission of the People’s Republic of China, and the DXY Chinese Web medical resource.

After this first instance, we attended to the birth of a wealth of works witnessing the need for online communication of the COVID-19 pandemic, for the creation of dedicated tools, and for the use of GIS technology for mapping the intricacies of the disease spread [15]. Popular solutions published during the first wave of the pandemic were built by the WHO (see Figure 1), the World Bank (<https://datanalytics.worldbank.org/covid-dashboard/>), a network of academic institutions that go under the name of Open COVID-19 Data Curation Group [16], the Artificial Intelligence Policy Observatory of the Organisation for Economic Co-operation and Development, as well as by single countries and private citizens.

Proposed solutions certainly provided many benefits to a quasi-real-time communication that was not possible during past pandemics. However, many concerns remain open. Some tools have become mainstream; in general, the audience tends to grow fond

of specific resources that are not necessarily the most authoritative and updated ones, but possibly are better disseminated or show the most captivating features in terms of usability. There has been a general call to arms of the researchers in academia inviting to a responsible scientific approach that guarantees accurate, reliable, and representative information to affected communities worldwide [17].

In general, the community of Information Science and Geographical Information Systems is united in encouraging the use of GISs for the effective communication power of near real-time daily mapping of cases and fatalities [18]. However, the phenomenon of dashboards has been analyzed also with a very critical perspective, as it does not capture adequately the geographies of the present. With this respect, in [19] Everts defines the “dashboard pandemic” as the phenomenon that gives birth to new pandemic governmentalities, that miss more nuanced spatial, temporal, social, and epidemiological information. With this respect, there is the issue of communicating using a granularity level that is interesting for the audience. Collecting high-quality data at a fine spatial resolution is hard and encounters many barriers at the technological and privacy level [20]. Solutions include embracing data at a more general level: big data could help a more granular vision of the problem; many approaches are being experimented with big data analytics instruments to help fight pandemics and public health emergencies in general [21–23]. Another group of researchers requests commitment to sharing epidemiological data [16,24] and nucleotide sequences [25] in an open science manner. These are fundamental requirements for guaranteeing that everybody can contribute with their analysis (especially knowledgeable research groups in academia, as claimed by Wissel et al. [26]), towards the achievement of digital public health aiming to increase the effectiveness of tracing/isolating strategies for pandemic control [27].

In this preliminary review study, we allow particular attention to a significant case of tool evolution: the COVID-19 Situation Dashboard of the WHO [28]. In particular, a semiotic comparison [29] between the versions of the website is significant. From January 26th to April 6th, 2020, the WHO published online an ArcGIS Operation Dashboard (shown in Figure 1a) that contained at the center a world map showing—with simple WebGIS-based features—the geographical diffusion at a country-level detail, in addition to affected countries, laboratory-confirmed cases by date of report, and a cumulative curve with dates and scale in plain text. Only for China, data were provided by provinces, autonomous regions, and municipalities as well.

A completely different interface was deployed as of April (see Figure 1b). Aesthetic and user experience were substantially improved and an exploratory feature was included. However, the principle of having all significant data in one single screen was strongly affected, as well as the axis descriptions. The type of offered communication moved from a scientific/technical one to a more emotional one. From a one-screen geo-dashboard visualization style, the new website shifted to a vertical layout, significantly reducing the number of information readable at first sight. A user is now requested to scroll and perform more actions to capture a broad view; full ranking among all countries and numeric proportions are lost. Indeed, only the main 12 highly affected countries are reported in the home page; cases are by absolute number, not related to the country’s population. Graphs convey a more symbolic message (through improved aesthetics, dynamics, and emotional communicative choices), compared to the more statistics-based previous geo-dashboard. On a secondary note, an aggregate analysis by continent has been added.

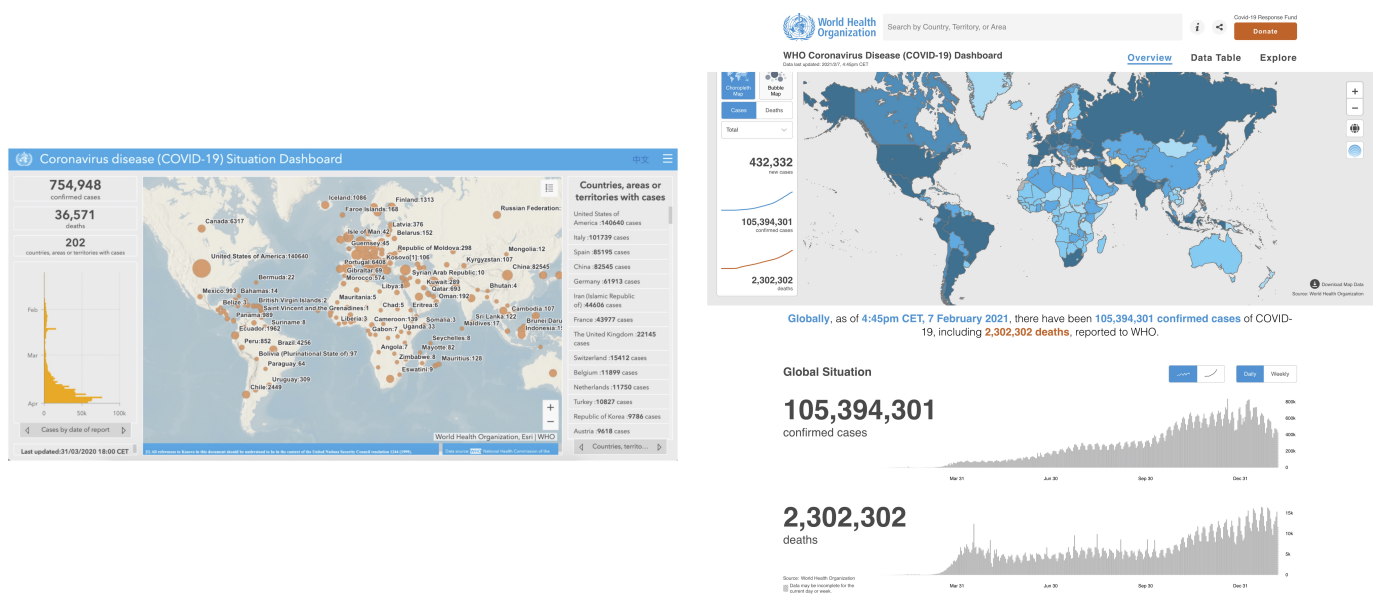


Figure 1. Different representations of the geo-dashboard showed on the online endpoint owned by the World Health Organization to inform visitors on the COVID-19 pandemic spread. Left: first version; previously available online at <https://experience.arcgis.com/experience/685d0ace521648f8a5bee01b9125cd> from January to April 2020; screenshot date: 31 March 2020. Right: second version; available online at <https://covid19.who.int/> after April 2020 onward; screenshot date: 8 February 2021.

3. Materials

In this section, we provide the framework of Geo-OEDV in terms of system components and main entities that will be used to later conceive our conceptual model. The analysis is based on our preparatory research, held during an epidemic-critical context, which allowed us to build a rich corpus of evidence for informing the following modeling process.

Four views have been selected to characterize the geo-visualization support for epidemics, taking the perspective of a Geo-OEDV developer: First, the relevant actors are categorized (Section 3.1). Second, Section 3.2 provides a taxonomy of different data types that are interesting for online communication during a world epidemic. Then, we propose a brief discussion on data sources and their reliability (Section 3.3). Finally, we discuss the definition of web-based instruments, i.e., dashboards, infographics, and explorers (Section 3.4).

3.1. Actors

The analysis of COVID-19 Geo-OEDV tools led to identifying the main actors involved in the process, following the perspective of designers/developers. Other actors are grouped in two subsets: those that use and benefit from information derived from Geo-OEDV (referred to as stakeholders), and those that own these tools, or more in general contribute to their governance.

Use-related actors (or stakeholders) are represented by the following categories:

- **General users:** private citizens who wish to be informed, to deal with daily decisions in their personal lives, solve their sense of curiosity and socialization of emotion, and alleviate the sense of fear and uncertainty brought by epidemics. Other stakeholders such as small/medium size entrepreneurs and managers who need to be informed to tackle business and managerial choices.
- **Policy-makers:** their decisions reflect on a whole country or society (e.g., Civil Protection in Italy or similar national bodies), on actions such as writing laws, arbitrating large-scale supply and logistics, strategic alliances with other countries, or flight

traffic. These stakeholders are greatly supported by the analytical and monitoring power of Geo-OEDV tools.

- **Researchers/Analysts** from private or public organizations, using Geo-OEDV to understand, monitor, and plan actions and policies.

Governance-related actors are of three kinds:

- **Analysts** from bigger companies, hospitals, or research centers, developing resources to feed Geo-OEDV and related data analysis, to inform decision-making, leading to an impact on subsystems of society at a higher level (i.e., provincial/regional). They can be aided by pinpointing which technologies and dimensions are used to communicate the pandemic.
- **Researchers** produce scientific knowledge, i.e., resources that deserve further investigation, such as how different Geo-OEDV configurations may distinctly convey information or how these tools have contributed to public risk perception during different waves of the pandemic.
- **Owner.** A public or private organization that collects data and/or owns the Geo-OEDV.

3.2. Data Types

From an information science perspective, data can be unstructured (in various forms and supports, e.g., files, web pages, images) or structured (organized within databases). A multitude of different data can be available to track information related to a disease. Referring to the perspectives of epidemic geography, bioinformatics, and GIS science, we consider a number of categories. The following data type taxonomy resembles the one proposed in [20]:

- The most specific kind of data relates to **genomic** aspects of both the virus and the host organism, i.e., the patient, and it is typically produced in sequencing laboratories; these data are described by conceptual models such as the Genomic Conceptual Model [30], the Conceptual Schema of the Human Genome [31], and the Viral Conceptual Model [32]. Genomic data are produced and hosted at many consortia and initiatives' sites (see in [33] for a complete review).
- **Clinical** (or medical) data are collected from medical institutions; they include admission symptoms, risk factors, exposure information, and hospitalization course, among other information. Imaging data represent a particular subset of clinical data. A dated conceptual model for this information was proposed in [34] but more recent efforts are arising in the Cancer Genomics practice [35] and in the COVID-19 research community [36], as shown in [37].
- **Epidemiological** data include all the heterogeneous categories that serve the unique purpose of modeling disease—diffusion waves and predicting transmission patterns—a comprehensive set of methods for this data is given in [38].
- **Health administration** data generally include the information regarding hospital capacities, quality of life, causes of death, health conditions of the population—this kind of information is usually available at the level of institutions (see, e.g., <https://healthdata.gov/> by the U.S. Department of Health and Human Services Office of the Chief Technology Officer).
- **Socio-economic and environmental data** include a very broad set of information (e.g., social media, mobility, and transportation, employment, financial, air quality, weather, etc.).

All such categories can be georeferenced and are clearly orthogonally related to a spatial component: genetic and clinical data are connected to the location of the infected organism or medical patient; epidemiological and health data only make sense when properly set in a defined geographic area; and socio-economic-environmental data always report a geographical and also temporal scale.

3.3. Data Providers and Their Reliability

Considering the data sources of Geo-OEDV, datasets may contain original primary data—that can become official statistics—or secondary elaborations. Data should always satisfy the minimum requirements of being authoritative, reliable, and updated. Within these constraints, three levels can be recognized:

- Government-sponsored sources/agencies provide the data with the highest quality. International examples include datasets from the WHO and the World Bank Open Data (<https://data.worldbank.org/>). Country/area-based examples are the US Centers for Disease Control and Prevention, China’s National Health Commission, the EU agency “European Centre for Disease Prevention and Control”, and the Civil Protection Department/Ministry of Health in Italy.
- Major companies, universities, and media sources (with a certain level of trustworthiness) provide data that is considered reliable, not necessarily of high quality, and often highly documented. Examples include the COVID-19 Data Repository by the Center for Systems Science and Engineering (CSSE) at Johns Hopkins University (<https://github.com/CSSEGISandData/COVID-19>), the Institute for Health Metrics and Evaluation data (<http://www.healthdata.org/covid/data-downloads>), or the New York Times data files (<https://github.com/nytimes/covid-19-data>).
- Individuals provide data that can complement the first two levels, possibly gathered with surveys or crowd-sourcing campaigns—while their usefulness is undeniable, the reliability should always be verified.
- Big data private companies such as Google, Apple, and Twitter can release datasets on specific topics (e.g., mobility trends and tweets).

3.4. Data Visualization Categories

In this research, we focus on the use of visualization to communicate on the Web the data types discussed in Section 3.2 to a wide public, in the scenario of an epidemic situation. We analyze in a systematic manner a number of available OEDV tools along with their relationships with underlying geographical information systems and their online representation, i.e., WebGIS.

OEDV systems are a broad set of tools that, in order to be effective, need to lay on the paradigmatic “three-legged stool” conceptualized by Iliinsky and Steele [39]. The shared objective is to visualize and effectively communicate complex data and their analytics. The visualization, according to this model, is the result of the interactions and activities of three main elements: data, designers, and readers. The dominant relationship determines the visualization result type, i.e., informative, persuasive, or artistic.

Building on Iliinsky and Steele’s model and encompassing a geographical and health perspective, we conceptualized an extended configuration (see Figure 2), that adds three aspects: (i) data can include geo-referenced data; (ii) the designer might be a developer with a mixed profile of content management, software development, and digital cartography skills; and (iii) the reader becomes a stakeholder with particular attention to understanding location implications.

In such case, the output tends to be dominated by GIS technologies, rather than plain data reported in form of tables, graphs, or artistic design. Note that to further prove this assumption, we later described a significant analysis on a collection of 121 relevant websites representing Geo-OEDV instances (see Section 4). Primarily, tools that allow geo-visualization are of three categories, discussed in the following. Readers can refer to Figure 3 for example instances of these types.

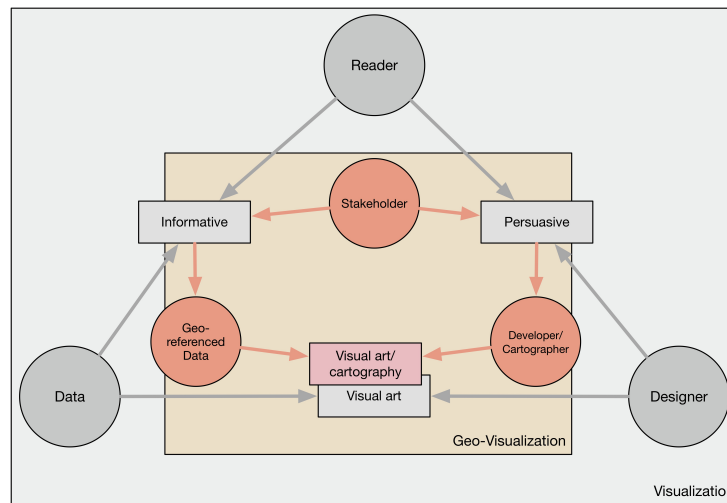


Figure 2. The Iiinsky and Steele’s three-legged stool model (in gray) and their conceptual evolution for spatially related data (in orange).

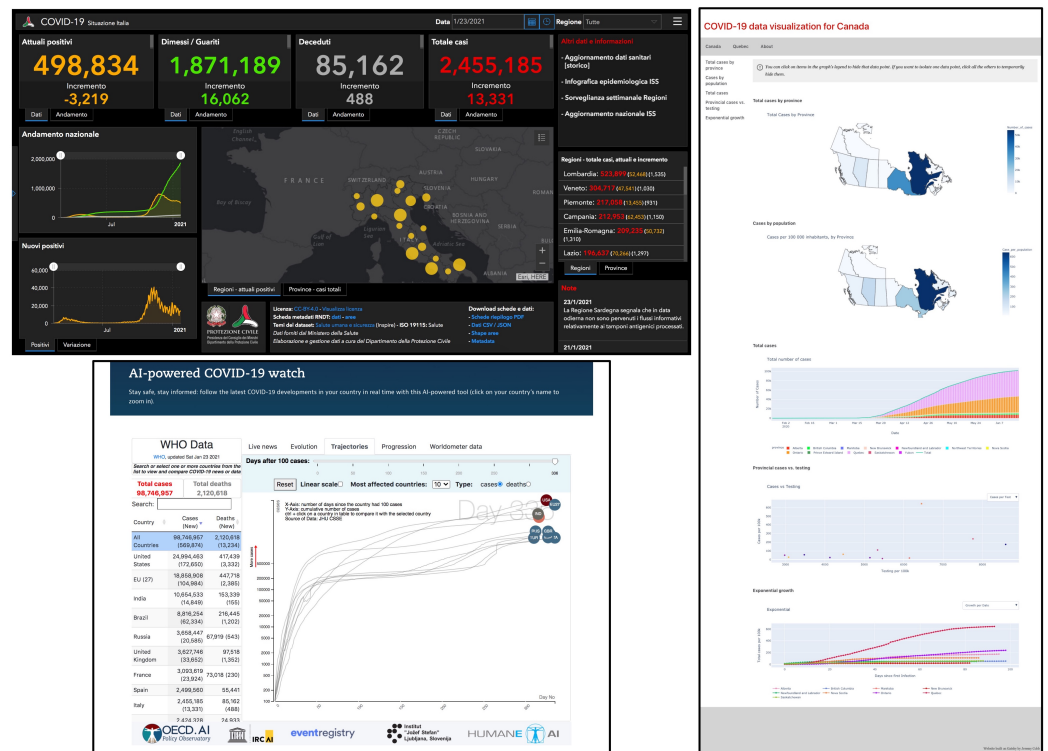


Figure 3. Examples of three categories of Geo-OEDV tools. Top left: dashboard of the Italian Civil Protection; available online at <https://opendatadpc.maps.arcgis.com/apps/opsdashboard/index.html#/b0c68bce2cce478eaac82fe38d4138b1>; screenshot date: 23 January 2021. Bottom left: explorer of the OECD.AI; available online at <https://www.oecd.ai/p/covid-19>; screenshot date: 23 January 2021. Right: infographic of private citizens: Nicolas Bent and Jeremy Cobb; available online at <https://canadian-covid-visualizations.netlify.app/>; screenshot date: 23 January 2021.

Geo-Dashboards. Understanding the meaning of different levels of data, especially when interlinked with each other, is anything but simple, requiring in most cases a fairly solid background in quantitative analysis and computer programming. Instead of querying data directly, business and decision-makers need intermediate means to access information, translate it into knowledge, and consequently into action. Dashboards are a type of data graphical interface to visualize, in an immediate fashion, key information in summarized ways, with the aid of graphs, parameters to be changed interactively,

and possibly maps. Originally, dashboards have been widely employed in the business intelligence departments, where users need to grasp quickly the analytics that matters to their business or project (e.g., trends, occurrences, indicators). Dashboards are preferred to simpler visualizations as their interactive nature engages non-technical users in the discovery/communication process. Different kinds of information can be built in real-time depending on which dataset and parameters are chosen. While analyzing the viral success of the map-based dashboard of the Johns Hopkins University's Center for System Science and Engineering, Kamel Boulos and Geraghty [9] note that anyone with internet access—in a short time and in few clicks—can learn an increasing amount of information about COVID-19 outbreaks, by, for example, reading a text, a table, a graph, a map, or directly a geo-dashboard. This latter one integrates all the former, providing data visualization that includes map objects that allow any user, even lacking significant previous knowledge, to understand the analytics and spatiality of a phenomenon framed by an intuitive single (even limited) screen, i.e., a Web browser tab or a single-page application.

Infographics. Simpler forms of dashboards are called infographics when no user interaction is allowed (i.e., they are static), but more focus is dedicated to aesthetics [40] and to comprehension and memorability of the employed visualization charts [41]. The reader's attention is captured by using principles of graphic design and by targeting large and diverse audiences [42]. We call "stories" particular infographic instances where maps are combined with narrative text, images, and multimedia content, using a consequential pace; this particular visualization type allows to greatly promote the power of maps and geography of the pandemic to a non-technical public.

Explorers. Sophisticated geo-visualization tools including the possibility to perform statistical and geo-statistical analytics are called explorers. Usually, explorers also include mathematical models application, allowing users to set particular parameters to adjust predictive functions and scenarios. The target of these tools is typically different from the ones of infographics, as knowledge of statistical models is assumed.

4. Methodology

This section describes the practical method applied to collect and structure the data for our analysis, further setting the basis for the resulting conceptual model.

Our objective was to explore the possibilities of variables, dominant choices, spurious occurrences, and recurrent patterns so to pinpoint clusters of types and also exceptional cases that deserve to be mentioned as outliers.

With the aim to inform the model design discussed in the results, COVID-19 Geo-OEDV methodologies were investigated through the creation of a collection of 121 relevant websites; Table A1 reports the pages on COVID-19 holding significant data on the spatiality of the phenomena. The collection used in this work started on 20 February and ended 3 May 2020, i.e., an average phase one period of the outbreak. Each link, i.e., representing a visualization case, was collected through active monitoring of health national and international institutions' resources, news, plus an ad hoc search of keywords in the main search engines. At the conclusion of the second European COVID-19 wave (December 2020) we have rechecked all links to ensure their functioning and to update the related information. A list of 15 Geo-OEDV tools collections has also been considered (see Table A2 in the Appendix A), even if these are more sporadic occurrences on the Web. Despite the fact that a set of considered entries (121 relevant websites and 15 collections) cannot be considered the universe of possibilities, the learning process performed during the search phase consistently informed our effort of modeling of the phenomenon; it also guided our preliminary analysis and deductions: we recognized a broad set of conceptual entities, including the primary technologies for visualization and mapping, active organizations, geographical coverage and granularity, and data richness.

Table 1. Descriptive analysis on the 121 records of our collection of OEDV tools dedicated to COVID-19 communication.

Analysis Dimensions	Available Values	% on Total (121)
Data type	Infected cases	76.86%
	Viral sequences	7.44%
	Forecasting	3.31%
	Information	1.65%
	Single case (Cases connections, Mobility changes, Supplies, Healthcare capacity...)	10.79%
Geo-OEDV category	Dashboard (WebGIS)	47.93%
	Infographic	41.32%
	Explorer	10.74%
Visualization technology	Esri	19.01%
	Leaflet	9.09%
	MapBox	9.09%
	Tableau	6.61%
	Flourish	4.96%
	DataWrapper	3.31%
	Microsoft Power BI	3.31%
	Proprietary technology	3.31%
	Google Data Studio	2.48%
	Highcharts	1.65%
	Single case (Chartbeat, Geodes, Qlik...)	14.88%
Not declared	22.31%	
Mapping technology	MapBox, OpenStreetMap, OpenMapTiles	26.45%
	Esri, HERE	18.18%
	Leaflet	4.13%
	Google Maps API	3.31%
	Bing	2.48%
	Tableau	2.48%
	DataWrapper	1.65%
	Excel	1.65%
	React Simple Maps	1.65%
	Single case (ArcGIS API for JavaScript, Scribble, uMap, Geodes...)	9.92%
	Not declared	13.22%
Not applicable (no map)	14.88%	
Maximum geographical coverage-geospatial depth	Worldwide-Country	26.45%
	Country-Province	17.36%
	Country-Region	14.05%
	Country-US County	4.13%
	US state-US County	3.31%
	Country-Variou	2.48%
	Country-City	2.48%
	Country-Country	2.48%
	Country-US State	2.48%
	Worldwide-City	2.48%
	Worldwide-Province	2.48%
	Single case (e.g., Country-Building, Worldwide-Point...)	19.83%
Type of organization that manages the page (i.e., owner)	Private Person	17.36%
	Newspaper/platform	15.70%
	Private Company	14.05%
	National Institution	13.22%
	Research Center	13.22%
	University	9.09%
	Multilateral Institution	7.44%
	Independent Group	3.31%
	NGO	1.65%
	Regional Institution	1.65%
	Single case (Not declared, Cultural Institute, European Agency, Public Institution)	3.31%

In particular, Table A1 in the Appendix A shows a preliminary characterization of the sample. For each analyzed Geo-OEDV tool, we included eight kinds of information:

1. **Data type:** the basic type of information shown by the tool (see Section 3.2). In the majority of cases, this corresponds to epidemiological information such as the number of infected cases (of SARS-CoV-2, the virus responsible for COVID-19), paired with the number of deaths, of performed tests. Another important cluster of platforms is based on genomic information on the virus sequences. Other types include social media reactions to disease spread, predictive risk mapping using population travel data, tracing and mapping super-spreader trajectories and contacts across space and time.
2. **OEDV tool category:** dashboard, infographic, or explorer (see Section 3.4). In the first case, data and queries are proposed mainly through a web-based cartographic representation, hence referring to generally reported as GIS technology. In the second case, data and queries are proposed mainly through a mixed statistical visualization, including maps. In the third case, maps and statistical information are significantly integrated and rich in complexity.
3. **Dominant visualization technology:** Geo-OEDV employs all kinds of libraries or frameworks to structure the front-end of a tool; this information is not always available.
4. **Dominant mapping technology:** the system used to represent maps and interactions on them. We overview also systems without maps, as long as they include an explicit and dominant knowledge of geographical areas (e.g., in filters or graphs).
5. **Wideness of geographical coverage:** the extension of the geographical area represented in the tool (e.g., worldwide, a specific country or city).
6. **Depth of geographical coverage:** the granularity of the provided information. Counts and other statistics may be given on a country, region, province, or city-level granularity.
7. **Type of owner** of the page: the organization behind the development and sponsorship of a Geo-OEDV tool may be public or private, from the research or institutional domain (see Section 3.1, Governance point).
8. **Name of the owner** of the page.

Other ten categories/parameters have been monitored: language, the openness of the platform, source of data, data download features, and type of repository, used secondary technologies, first online release, frequency of updates and updating method, closing or abandonment date, and interactivity. However, this information could not be captured for all platforms; therefore, it was excluded from the dataset used in this paper, as consistent statistical analysis could not be performed with such incomplete parameters.

5. Results

This section reports on the descriptive statistical analysis of our 121-record collection (Section 5.1) which extends and updates the one performed in [3]. Analyzed instances are mostly focused on representing the infected cases (what we called “epidemiological data” in Section 3.2); then the case of genomic geo-dashboards, referring to the “viral sequences” data type, is discussed in Section 5.2. Finally, we overview our proposed Entity-Relationship diagram to represent the space of Geo-OEDV tools used for pandemic events such as COVID-19 in a comprehensive and structured way (Section 5.3).

5.1. Statistical Data Analysis

In this section, we aim to observe the main trends in publicly available Geo-OEDV tools, by answering our initial research question **RQ1**. The analysis of the dataset—summarized in Table 1—shows that the great majority of analyzed tools are focused on the number of infected cases, followed by a small number of platforms dedicated to the viral sequences and mutations data (mainly proposed by universities and research centers), and by some experiments on forecasting of the epidemics. Two platforms analyze information spreading during the pandemic, whereas other single occurrences report on connections between infection cases (based on traveling data), mobility, supplies, or healthcare capacity.

The second dimension shows that the most spread online explanatory data visualization method is the dashboard one—based on WebGIS—with about 48% of occurrences, followed by infographics (~41%) and explorers (~11%).

As to employed visualization technologies, Esri dominates (~19%), while other leading choices include Leaflet (~9%), MapBox (~9%), Tableau (~7%), Flourish (~5%), DataWrapper (~3%), and Microsoft Power BI (~3%), followed by other minor alternatives, which cover 15% of the sample. In ~22% of cases, the visualization technology was not clearly stated in the page.

Leading choices for the mapping libraries include a combination of MapBox, OpenStreetMap, and OpenMapTiles (~26%); Esri and HERE technologies (~18%); and Leaflet (~4%), while Google Maps API, Bing, and Tableau each cover about 3% of the sample. Instead, ~10% employ other single case solutions. In about 13% of the samples we were not able to infer the dominant mapping technology, as it probably corresponds to ad hoc solutions by the developers of the specific platforms, whereas in ~13% of the dataset there is no explicit use of maps, but strong use of geo-spatial related attributes and labels.

The geographical coverage tends to include worldwide data with a country-based detail (~26%); a high rate is represented by country coverage data with a provincial (17%) or regional (14%) breakdown. Many platforms focused on the whole USA with detail on counties (~4%) or only on one US state with detail on its counties (~3%). Only 10 records present data at the scale of a municipality or a city. It is also worth mentioning that only in a very few tools (four cases in total) the details of maps were reported at the building level or at the point granulometry. Such a low percentage expresses the economic and technological complexity of reaching a fine detail and the differences among countries in data privacy online publication.

Another analysis dimension concerns who has promoted the publication of COVID-19-related data. Table 1 highlights that geo-visualizations tend to be uniformly distributed among the public and private spheres. In particular, private persons, empowered by lightweight geo-visualization tools that allow anyone with programming skills to build engaging and interactive maps, are the most significant cluster (~17%), followed by newspapers or news platforms (~16%), private companies (~14%, most of which are specialized in geographical information systems), national institutions (~13%), research centers (~13%), universities (~9%), and multilateral organizations (7%). The remaining ~10% is composed of sub-national public organization, non-governmental organizations (NGO), and volunteered geographical information or has unknown ownership.

WebGIS-based dashboards tend to be used by national, multilateral, and research centers, while the private segment, with the exception of GIS-specialized firms, tend to use the infographic-based cartographic approach. This confirms our expectations, as WebGIS often require higher specialized skills and more expensive software investments; also, in general, the aesthetic design is of lower quality. On the other hand, WebGIS-based visualizations are richer in data, interactive features, and analytics, but more advanced statistical and cartographic knowledge might be needed to fully grasp such richness. Moreover, complexity in the usage, lower aesthetic quality and understanding are found in the case of explorer features.

Thanks to the large availability of libraries to create interesting visualizations (see a list on the Geo Awesomeness blog [43]), reaching high aesthetic standards in dashboards has become relatively simple. Even individuals with limited technical skills (i.e., non-programmers) are learning ready-to-use development platforms, where dashboards can be easily prepared and shared with the community. Notable examples are given by DataWrapper (<https://app.datawrapper.de/>) and Flourish (<https://flourish.studio/>), which include free plans, or Tableau, which gives the possibility to share one's dashboards on a public gallery (<https://public.tableau.com/en-us/gallery>).

Regarding data sources (defined in Section 3.3), the analysis shows that very few Geo-OEDV are not using institutional data or the Johns Hopkins University's CSSE data.

The main used sources are regional and national competent authority and the WHO. Even when no epidemic but health and other data are reported

Even when the reported data is not epidemiological or clinical, the most common sources are the official ones; it is the case of health and other data, such as distributed material, location feeding level, social media sentiment, info-tracking, development, phylogenetic, fever, and traffic. This behavior shows the effectiveness of open data policies carried out by public institutions and research centers. Datasets are generally provided via simple downloads of CSV or similar formats directly via GitHub or equivalent repositories. This clearly leads to a beneficial effect in reducing the so-called “infodemic” and diffusion of fake news; however, the high concentration of data reduces possibilities of counter-checks.

5.2. The Case of Genomic and Clinical Geo-OEDV

This section targets the need for tools that are specific of pandemics, communicating data also at the genomic and clinical level—thereby responding to the research question **RQ2**. While the majority of observed Geo-OEDV focuses on reporting infected cases, we found a set of platforms with a focus on viral sequences, i.e., data describing the genomic characteristics of viral samples extracted through COVID-19 tests and sequenced in genetic laboratories throughout the world. Considering the high value for stakeholders (especially for researchers in the COVID-19 pandemic), we performed a restricted drill-down of our analysis to evaluate potential trends of this sub-type of tools.

Literature suggests that a number of experiments on real-time visualization have been performed in the past, long before the coronavirus epidemic, on other pathogens [44–46]. These systems were considered under the umbrella of “outbreak analytics” in [47]; some of them focused on phylogenetics [48–50], as they allowed to observe the evolutionary history of a taxonomic group of organisms. This feature is very critical during a pandemic caused by a virus that is continuously mutating, thus possibly impacting contingent studies on medications and vaccines.

Among the analyzed tools, NCBI Virus is a general portal for sharing sequences of any virus [51]. They have created a specific resource for SARS-CoV-2 (<https://www.ncbi.nlm.nih.gov/labs/virus/vssi/#/sars-cov-2>), the virus responsible for COVID-19, with simple map-based visualization. A platform that provides much more data of this kind, as it integrates different data sources, is ViruSurf [52], which characterizes its sequences by using location information (e.g., continent, country, region, and municipality, when available). Other well-known players of virology bioinformatics have contributed with a geo-spatial analysis on important mutations, such as the D614G variant on the Spike protein [53]; variant distributions in the world ([54,55]), and the COVID-19 virus mutation tracker (<https://www.cbrc.kaust.edu.sa/covmt/index.php?p=maps>). Others have build trackers of virus subtypes [56] and of haplotype networks [57]. Two important platforms, NextStrain [48] (see Figure 4, left) and Microreact, have produced recent *ad hoc* endpoints for COVID-19 viral sequences phylogeny: these are being accessed thousands of times every day by researchers who analyze the phylogeny of the virus, to monitor the spread of particular lineages (as it happened with the Spanish variant in September 2020 [58] or the UK strain in December 2020 [59], attracting much attention from the media).

We also found a restricted number of platforms that are based on the “clinical data type” [60], including, for example, tools to monitor healthcare system capacity [61,62], to forecast different potential outcomes of the COVID-19 epidemic based on several parameters [63] (see Figure 4, right), or to assess the risk level of attending events [64].

Overall, genomic and clinical tools represent significantly less frequent cases of fairly complex Geo-OEDV structures; these are typically less user-friendly, suggesting that stakeholders do not correspond to the general public or non-specialized policy-makers, but analysts and researchers with advanced knowledge of scientific aspects of the pandemic.

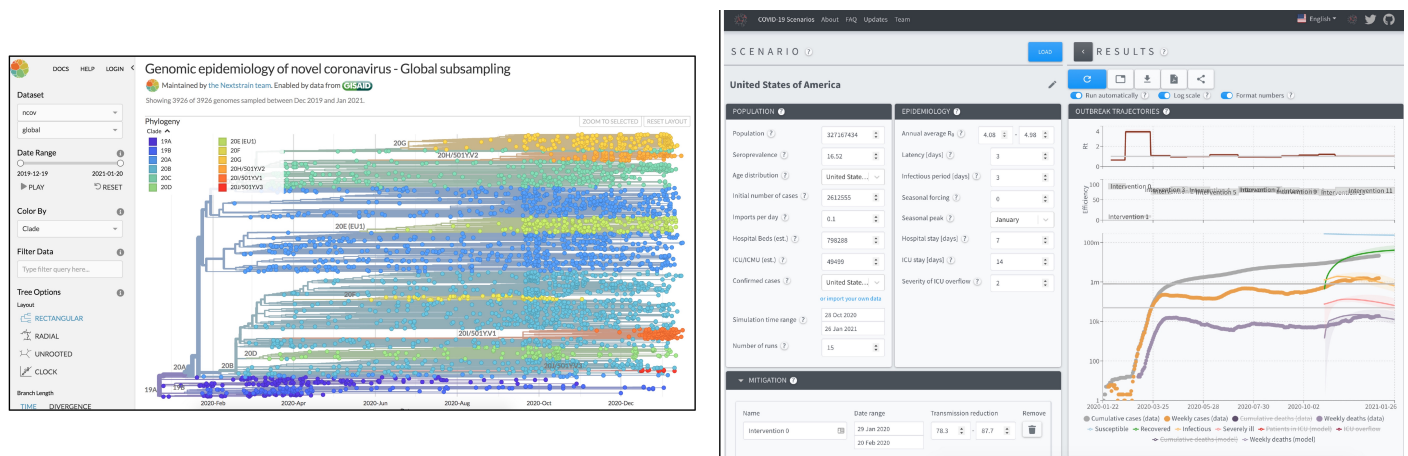


Figure 4. Examples of expert Geo-OEDV tools. On the left, Nextstrain platform [48] for SARS-CoV-2 phylogenetic and transmission analysis; available online at <https://nextstrain.org/ncov/global>; screenshot date: 23 January 2021. On the right, COVID-19 Scenarios platform [63] for exploring and simulating population and epidemiological factors that impact the disease outbreaks; available online at <https://covid19-scenarios.org/>; screenshot date: 23 January 2021.

5.3. A Geo-Oedv Entity Relationship Model

The conducted descriptive analysis convinced us that many of the characteristics that we associated directly with Geo-OEDVs, instead pertain conceptually to different entities, which play an important role in the dashboard/tool conception, realization, and use. Our most important research question, i.e., **RQ3**, concerned the possibility to create a general model to convey information on creation, structure, control, and dissemination of Geo-OEDV tools. To express the complexity of this system, we thus propose to employ a powerful modeling formalism, i.e., the Entity Relationship (ER) diagram, which allows to building abstractions of real objects and phenomenon, such as classification, aggregation, and generalization. ER models were first introduced in [65] and became quickly prominent as an industrial standard for conceptually designing databases [66].

The described domain of knowledge is that of online visualization platforms that employ geo-spatial information to inform their public on particular health-related events, typically epidemics. Our modeling effort is inspired by the COVID-19 case study but applies to more general scenarios. Precisely defining entities involved and the relationships that connect them—characterized by a given cardinality—is important to reveal interesting facts such as the presence of (i) a few data sources that feed many platforms; (ii) stakeholders with different profiles that access the same platform; and (iii) collections that host different platforms and, vice versa, platforms that are hosted on different endpoints (possibly managed by different players), just to mention a few examples.

In Figure 5, we represent the skeleton of the proposed ER model. To allow for the readability of the figure, we here omit the attributes, while we list them comprehensively in Table 2, along with their descriptions. Following our systematization effort of Sections 3 and 4, we here identify thirteen main entities; they are represented with rectangle-shaped boxes with a thick stroke. They are related one to another with relationships named as indicated in the diamond-shaped boxes, to be read from the central entity outwards. For example, the GEOOEDVTOOL *has* one OWNER, while one PAGE *includes* 1:N (i.e., one-to-many) MODULES. The central entity is described by four views:

- its *internal structure* is composed by a set of PAGES, which in turn include MODULES that are made of single LAYOUTCOMPONENTS (see Figure 6 for the graphical representation of one possible dashboard layout);
- its *technology* includes: a software part, based on one SOFTWAREREPOSITORY that contains a set of SOFTWARECOMPONENTS of different kinds; a data part, relying on a DATAMART, which aggregates information from a single (or possibly a set of) DATABASES, where the ORIGINALDATASOURCES have been imported.

- its *use* comprises a set of use PROFILES, belonging to given STAKEHOLDERS (these can be private or institutional ones).
- its *governance* is defined by the OWNER of the platform and by the dissemination strategy: the platform appears in several RESOURCES.

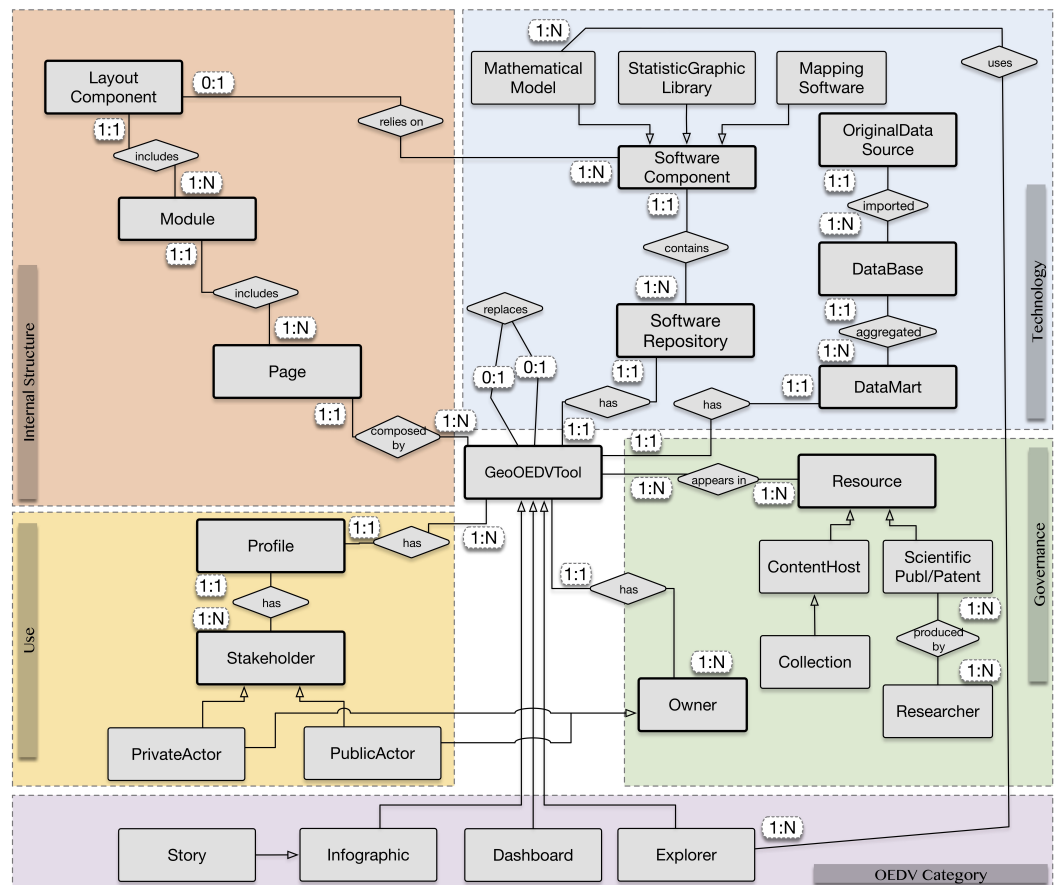


Figure 5. The entity relationship schema of Geo-Online Exploratory Data Visualization tools.

Arrows are used to represent generalization relationships; these connect secondary entities that are specializations of the main entities. Specifically, the Geo-OEDV tool is a generalization of various categories, such as EXPLORER, WebGIS DASHBOARD, and INFOGRAPHIC (that could be of the STORY kind). These types are intrinsically different; they are used in different scopes and usually require different expertise to be fully exploited from stakeholders (see Section 3.4). Both a stakeholder and an owner of a GEOOEDVTOOL may be a PRIVATEACTOR or a PUBLICACTOR. A RESOURCE may be a CONTENTHOST (which in turn can be a COLLECTION, aggregating or only linking several tools), or a SCIENTIFICPUBL/PATENT. This is produced by one or more RESEARCHERS, who in turn can deliver one to several publications. A SOFTWARECOMPONENT may be of several kinds; here, we focus on MAPPINGSOFTWARE, STATISTICGRAPHICLIBRARY, which at times are merged or served by the same software provider, and on MATHEMATICALMODELS).

Table 2. Comprehensive list of ER diagram attributes, grouped by their corresponding entity.

Entity	Attribute	Attribute Description	Mult.
GEOEDVTOOL	release_version	Version of the tool since its first release.	
	release_date	First release date of the tool	
	geographical_coverage	Maximum geographical coverage represented in the tool (see Table 1)	
	geographical_granularity	Finest geo-spatial detail level represented in the tool (see Table 1)	
	represented_time_span	Maximum time span represented in the tool (e.g., January through December 2020)	
	used_time_granularity	Finest temporal detail level represented in the tool	
PAGE	number	Progressive number of tool page (some dashboards have several, but default is 1)	
	layout	Particularly encoded layouts (e.g., sequential, 2 × 2, 3 × 3...)	
MODULE	title	Explanation of the metric represented in the module (e.g., “Total Cases”)	
	metric	Mathematical explanation of the formula used in the module (e.g., count, logarithmic, cumulative)	
LAYOUTCOMPONENT	is_interactive	If the module allows the user to choose any parameter or configuration	
	is_graphic	If the single component is graphic or of other kind	
	is_interactive	If the component allows the user to click on it and change its state	
	type	Components may enable activate a feature or select specific data	
	information_kind	Information may be provided in the form of a table, graphic element, artwork, simple text, map...	
SOFTWAREREPOSITORY	URL	The repository link	
	platform	The platform hosting the code (e.g., GitHub, BitBucket, Google Cloud Source...)	
	is_private	If the repository code can be accessed by everyone or not.	
SOFTWARECOMPONENT	update_frequency	Frequency of software update in production (daily/weekly/monthly...)	
	library_name	Which library implements the software component	
	installation_mode	Instructions for installing the component or importing it	
MAPPINGSOFTWARE	dependencies	List of required packages or components prior to installation	×
	name	Name of mapping technology (see Table 1)	
	version	Software version of the mapping library	
STATISTICGRAPHICLIBRARY	is_open_source	If the software is publicly available or a licence must be purchased	
	name	Name of statistic/graphic technology (see Table 1)	
	version	Software version of the statistic/graphic library	
MATHEMATICALMODEL	is_open_source	If the software is publicly available or a licence must be purchased	
	reference	Academic/research publication reporting the definition of the model	
	parameters	List of parameters to tune the model	×

Table 2. Cont.

Entity	Attribute	Attribute Description	Mult.
DATAMART	schema	List of tables (also fact/dimensions, if structured as a data warehouse)	×
	aggregation_metrics	List of aggregations and queries to support visualization	×
	data_unit	The basic data information reported by the tool, reflecting data_type of the original source	
DATABASE	update_frequency	Frequency of tables re-loading	
	schema	List of tables (integrating sources information)	×
	db_engine	Used database management system in the back-end	
ORIGINALDATASOURCE	is_relational	If the database paradigm is relational	
	update_frequency	Frequency of data import from sources	
	name	Name of the data source repository	
	repository_URL	Endpoint of data to be imported	
	provider	Provider of the data source (see types in Section 3.3)	
	data_type	The basic data information reported by the source (see Table 1)	
	geographic_region	Geographic regions represented in the source	
	schema	List of tables and schema of tables	×
	download_format	File or other format provided for download of data	
	data_update_frequency	Frequency of data update at the source	
	license	License under which the data is provided to the public	
	metadata_availability	List of metadata further characterizing the provided data	×
PROFILE	language	Language of communication (usually English, unless tool from national/regional institutions)	
	login_needed	If a (pay) login is required to access the tool	
	use_configuration	Privileges of the profile (granting access to specific layers of the data/analysis)	
STAKEHOLDER	req_previous_knowledge	Assumed background of the stakeholder with this profile	
	name	Name of the stakeholder/user	
	type	E.g., institution, organization, citize, group of people...	
	expertise_level	Previous knowledge of geo-spatial data and statistics	
PRIVATEACTOR	type	E.g., person, organization, company, firm, ...	
PUBLICACTOR	level	E.g., national, regional, provincial, multilateral, ...	
OWNER	name	Name of organization or single that manages the page (see Table 1)	
	type	Type of organization that manages the page (see Table 1)	
RESOURCE	title	Title of resource (e.g., Newspaper article title, University COVID-19 analysis page...)	
	publication_date	When the resource has been officially published and shared with the public	

Table 2. Cont.

Entity	Attribute	Attribute Description	Mult.
CONTENTHOST	type	E.g., Newspaper page, University page, paid cloud space	
	platform_name	Platform hosting the resource (e.g., Google Data Studio, Tableau Public, own server)	
	URL	Endpoint where the tool is hosted and can be visualized	
COLLECTION	title	Title of collection	
	author	Author (e.g., journalist, blogger...) of the collection	
	collection_size	Number of tools included in the collection	
SCIENTIFICPUBL/PATENT	type	Explicit knowledge type: academic or other scientific publication, patent	
	author	Author of the piece of knowledge	
	journal	Journal of publication (if available)	
	title	Title of publication	
	doi	Digital Object Identifier	
	citation count	Numbers of external uses or of citations of the resource	
RESEARCHER	Name	First and last name of researcher	
	ORCID	Unique identifier in the research community	
EXPLORER	advanced_parameters	List of parameters to tune the analysis on the explorer	×
DASHBOARD	available_analyses	List of analysis that can be performed on the tool	×
	interactions	List of actions that can be performed by a stakeholder to change the visualizations and observed metrics	×
	configurable_metrics	List of metrics that can be configured by stakeholders	×
INFOGRAPHIC	is_single_page	If it is only composed by one screen	
STORY	highlight_by_hovering	Infographics can have highlighting mechanism by hovering	
	scope	Story or information that is being conveyed by the platform	
	animation_effect	Graphic effect to switch between story parts	

We include a self-relationship on GEOEDVTOOL, as each tool can be put in a relationship with a previous (or later) version of the same system. Each LAYOUTCOMPONENT in the *internal structure* view relies on a specific SOFTWARECOMPONENT in the *technology* view. The EXPLORER OEDV category uses one-to-several MATHEMATICALMODELS defined as software components. Cardinalities of relationships can be appreciated in detail in Figure 5:

- One-to-one relationships connect the tool with its software repository and the data mart; then, one-to-many relationships connect these elements respectively to the software components, and to the databases and original data sources.
- The *internal structure* view is characterized by one-to-many relationships outwards (from one single tool to many components).
- From the central entity, the only many-to-many relationship is the one between the tool and the resources that use it, as they may host many tools; for example, the John's Hopkins University's dashboard appears on many websites and collections [14], at the same time many of such resources are collections or aggregators of different tools.
- From the owner, towards the tool, we draw a one-to-many relationship.
- A tool can have many profiles; these belong to one stakeholder. Similarly, one stakeholder may have many profiles; each of these corresponds to only one tool.
- Other N:N relationships are between an explorer and its mathematical models, and between a scientific publication and the researchers sharing its authorship.

Table 2 provides a list of all attributes related to each entity, accompanied by their description. Data types are the obvious ones: attributes starting with “is_” are Boolean flags, versions are numbers (or possibly strings, if they contain sub-versions), dates of release and publication are of date type, all others are strings. In the last column “Mult.” we mark the attributes that represent a list of values. In a subsequent version of the model, these would probably be represented as an additional table, referenced by the main one. Seven attributes and three entities (dashboard, explorer, and infographic) are underlined, as they represent the eight information aspects that we captured in our previous analysis (see Section 4).

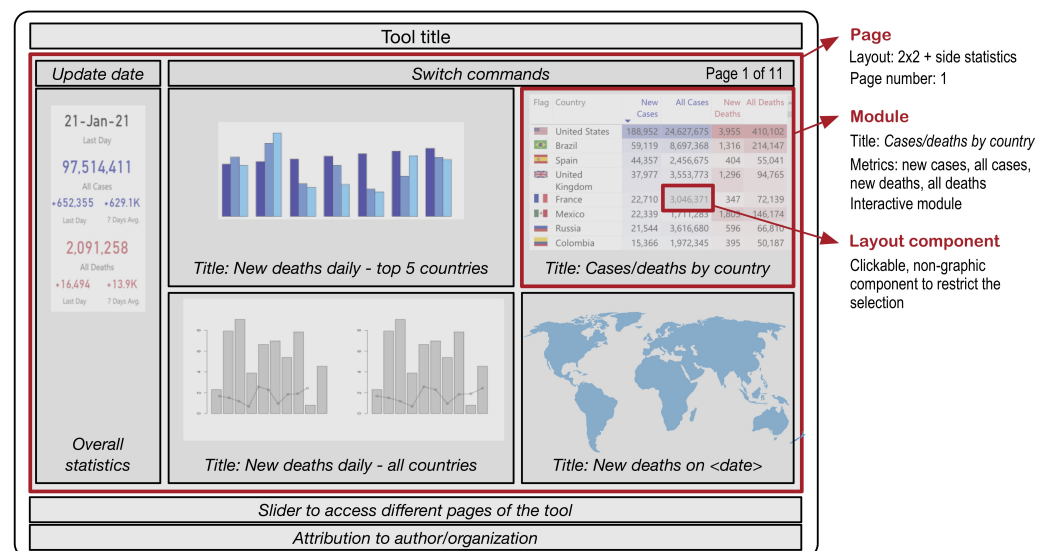


Figure 6. Possible structure of an interactive Geo-OEDV tool, inspired to the “Dashboard | COVID-19” by Andrzej Leszkiewicz; available online: <https://avator.org/covid-19/>; screenshot date: 23 January 2021.

An example instance of our ER model is represented by the Italian Civil Protection Department dashboard (previously shown in the left top corner of Figure 3), which is every day inspected by millions of Italians. The Italian Civil Protection Department is a particular STAKEHOLDER of this advanced GEO-OEDV TOOL, which has a specific use PROFILE, i.e., the one employed in the control room of the department. This profile has high privileges as it should monitor all relevant data that allow to take timely decisions for the whole nation. The dashboard for general stakeholders is available on a GIS by Esri (<https://opendatadpc.maps.arcgis.com/apps/opsdashboard/index.html#/b0c68bce2cce478eaac82fe38d4138b1>), the data repository is available on GitHub (<https://github.com/pcm-dpc/COVID-19>), as an ORIGINALDATASOURCE that can be employed also by other tools. Note that in the ER diagram we do not represent higher-level information such as the actions operated by (some) stakeholders on data containers, software, or tools. This would require another kind of formalism, e.g., Business Process Models.

6. Discussion and Conclusions

In this research, we argue that during emergency times, advanced communication tools that combine online visualization with mapping interactive features—named here Geo-Online Exploratory Data Visualization—are of uttermost importance. Indeed, they are able to produce synthetic communication and to effectively convey geo-spatial information to a large set of stakeholders, including both individuals and institutions, at different scales from municipal/regional, to national/multilateral levels.

Our work tackles both the identification of main entities involved in the use of geo-referenced data and their relationship in the case of pandemics (such as COVID-19). We precisely modeled the domain of Geo-OEDV tools, specifically when these showcase geo-spatial data—either in the form of maps or as an explicit notion—for performing analysis and driving user interaction. First, we provided a systematization of actors, data types, providers, and visualization tools. We then employed this taxonomy to analyze a collection of about 120 sites presenting relevant geo-visualizations dedicated to the COVID-19 pandemic communication. Based on this collection, we were able to

- (i) operate a critical statistical analysis of collected evidence (according to eight high-level parameters) showing main recurrence, choices, and typologies of platforms openly available on the Web, and
- (ii) propose a novel Entity Relationship model that overviews Geo-OEDV tools from four views, i.e., their internal structure, use, governance, and technology.

In this discussion, we motivate our research and answer to our last research question **RQ4**, which has to do with the benefits of proposing a conceptual model for Geo-OEDV, trying to identify the most relevant stakeholders of these systems. Conceptual Modeling has been previously used in GIS-related problems [67] also applied to specific fields (e.g., archaeology [68] or management of energy production [69]) but, to the best of our knowledge, this is a novelty for pandemic cases. With this formalism, we stress the importance of understanding in depth the tools that are currently driving the communication to the broad public of the pandemic, in its diffusion and implications. We deem conceptual models to be of substantial relevance for developers/designers, resource providers, and data owners for producing high-quality Geo-OEDV for stakeholders. Additionally, our model can be used as a starting framework for deeper analyses of Geo-OEDV as next-generation tools for communicating pandemics in a more informed fashion, where stakeholders of different expertise levels can understand the phenomenon with diverse degrees of detail.

Our data collection may highlight gaps in the system. For instance, we highlight that genomic and clinical data Geo-OEDV are less frequent and in general less user-friendly, but with a deep and vast content of information. Another clear trend is the rare combined use of cross-disciplinary data types, despite this being one of the main GIS features. For example, socio-economic data are hardly ever matched to epidemiological data, resulting in the impossibility of finding meaningful correlations among decisions made to control the epidemic.

Our conceptual model may be used to guide the logical and physical design of a relational database that serves as a repository of health-related dashboards. Such a data collection may be input to several existing frameworks to assess dashboards' usability and measure their value (see, e.g., in [70]) on several perspectives. Analysis on the use and interactions on Geo-OEDV tools on COVID-19 may also inform studies on public risk perception on the COVID-19 emergency (see, e.g., in [71]).

This study has implications on several sides and provides support for different stakeholders: general users, with impact on their own lives or small businesses; analysts/developers, as representatives of bigger hospitals/companies/research centers that have resources to devote to data analysis, with impact on subsystems of society; and policy/decision-makers—who are making laws and deciding on supplies, economy, and alliances among countries—which impact on the entire society.

Considerable amounts of new Geo-OEDV tools are being realized in these hectic times; this tendency witnesses that the worldwide research community and the general public are asking for always more effective forms of quantitative communication of the pandemic. However, while reviewing the dataset during the second wave of the pandemic, we found that, with respect to the first wave of the COVID-19 pandemic, there were no considerable changes and advancements in the proposed Geo-OEDV tools. This may be an interesting direction to investigate in future works; it also suggests that conceptual modeling could be used to track the evolution of tools while tackling gaps of communication, pinpointing interesting or alarming trends.

Author Contributions: Both authors have contributed to the conceptualization, methodology, data curation, and analysis; Sections 5.1 and 6 shall be attributed indistinctively to both. A.B. performed the conceptual model design, editing significantly Sections 3.2, 4, 5.2 and 5.3. S.G. provided the overall real system analysis on GIS and geo-spatial data insights, mainly editing Sections 1, 2, 3.1, 3.3 and 3.4. The manuscript was written and approved by both authors. Both authors have read and agreed to the published version of the manuscript.

Funding: This research received no external funding.

Institutional Review Board Statement: Not applicable.

Informed Consent Statement: Not applicable

Data Availability Statement: Data sharing is not applicable to this article. Data is contained within the article or Appendix A.

Conflicts of Interest: The authors declare no conflict of interest.

Appendix A

Table A1. A comprehensive list of analyzed resources, with their characterizing parameters.

URL	DataUnit	Category	VizTechnology	MapTechnology	GeoCoverage	MaxGeoDetail	OwnerType	OwnerName
link 1	Infected cases	Dashboard	-	Not Applicable (no map)	Australia	Australia State	Private Person	CoffeAndPlot
link 2	Infected cases	Dashboard	Esri	HERE, Garmin, FAO, NOAA, USGS	Austria	Province	Private Company	Esri
link 3	Infected cases	Dashboard	Esri	Esri	Bangladesh	-	Cultural Insitute	Bengal Institute
link 4	Infected cases	Dashboard	MapBox	MapBox, OpenStreetMap	California	US County	Research Center	University of California SF
link 5	Infected cases	Dashboard	ECharts	-	China	China Province	Independent Group	DX-Doctor
link 6	Infected cases	Dashboard	Esri	Dashboard	Europe	Region	Multilateral Institution	WHO
link 7	Infected cases	Dashboard	Esri	HERE, Garmin, FAO, NOAA, USGS, EPA	Florida	US County	National Institution	Florida Department of Health
link 8	Infected cases	Dashboard	Geodes (internal)	Geodes (internal)	France	Region	National Institution	Santé Publique
link 9	Infected cases	Dashboard	Esri	HERE, Garmin, FAO, NOAA, USGS	France	Region	Private Company	Esri
link 10	Infected cases	Dashboard	-	OpenStreetMap	Germany	County	Private Person	Thomas Brinkhoff
link 11	Infected cases	Dashboard	Esri	HERE, Garmin, FAO, NOAA, USGS	Germany	Region	National Institution	Robert Koch-Institut
link 12	Infected cases	Dashboard	Esri	Dashboard	Germany	Region	National Institution	Koch Institute
link 13	Infected cases	Dashboard	Esri	Dashboard	Hong Kong	Building	National Institution	Government of Hong Kong
link 14	Infected cases	Dashboard	Esri	Dashboard	Italy	Province	Multilateral Institution	United Nations World Food Programme
link 15	Infected cases	Dashboard	Google Data Studio	Google Maps API	Italy	Province	Private Person	@FMosso
link 16	Infected cases	Dashboard	-	OpenStreetMap	Italy	Province	Private Person	Thomas Brinkhoff
link 17	Infected cases	Dashboard	Esri	HERE	Italy	Region	National Institution	Civil Protection Agency
link 18	Infected cases	Dashboard	Esri	Dashboard	Japan	Province	Private Company	J.A.G JAPAN
link 19	Infected cases	Dashboard	Tableau	Tableau	Lombardia	Province	Public Institution	Regione Lombardia
link 20	Infected cases	Dashboard	Esri	HERE, Garmin, FAO, NOAA, USGS	Lombardia	Province	Regional Institution	Regione Lombardia
link 21	Infected cases	Dashboard	Esri	Dashboard	Macau	Building	Private Company	Esri
link 22	Infected cases	Dashboard	Esri	Community Map Contributors	Netherlands	Province	Private Company	Esri
link 23	Infected cases	Dashboard	-	Non dichiarato	Piemonte	Municipality	regional institution	Regione Piemonte
link 24	Infected cases	Dashboard	Esri	HERE, Garmin, FAO, NOAA, USGS	Slovenia	Province	Private Company	Esri
link 25	Infected cases	Dashboard	Esri	HERE, Garmin, FAO, NOAA, USGS	Switzerland	Province	Private Company	Esri
link 26	Infected cases	Dashboard	Esri	Dashboard	Thailand	Province	National Institution	Public Health Emergency Operation Center
link 27	Infected cases	Dashboard	-	OpenStreetMap	UK	County	Private Person	Thomas Brinkhoff
link 28	Infected cases	Dashboard	-	OpenMapTiles, OpenStreetMap	UK	UTLA	National Institution	Public Health England
link 29	Infected cases	Dashboard	Javascript	Not Applicable (no map)	USA	City	University	University of Cincinnati
link 30	Infected cases	Dashboard	-	OpenStreetMap	USA	County	Private Person	Thomas Brinkhoff
link 31	Infected cases	Dashboard	-	Not Applicable (no map)	USA	US State	Independent Group	The COVID Tracking Project
link 32	Infected cases	Dashboard	Tableau	Tableau	USA	US State	Private Company	Cuebiq
link 33	Infected cases	Dashboard	Leaflet	HERE Technologies	Worldwide	Country	Private Company	HERE
link 34	Infected cases	Dashboard	Google Data Studio	Google Maps API	Worldwide	Country	Private Person	@FMosso
link 35	Infected cases	Dashboard	Esri	FAO, NOAA	Worldwide	Province	Newspaper/platform	Corriere della Sera
link 36	Infected cases	Dashboard	MapBox	OpenStreetMap, MapBox	Worldwide	Region	University	Group of Universities and IHME
link 37	Infected cases	Dashboard	Esri	Garmin, METI/NASA, USGS, FAO, NOAA	Worldwide	Sovereignty	Research Center	Johns Hopkins University (CSSE)
link 38	Infected cases	Dashboard	Esri	HERE Technologies	Worldwide	Country	University	University of Virginia
link 39	Infected cases	Dashboard	Flourish	Not Applicable (no map)	Worldwide	Country	Private Person	Boba Tea
link 40	Infected cases	Dashboard	-	Not Applicable (no map)	Worldwide	Country	Private Person	CoffeAndPlot
link 41	Infected cases	Dashboard	Leaflet	Leaflet	Worldwide	Country	Research Center	University of Washington
link 42	Infected cases	Dashboard	MapBox	MapBox, OpenStreetMap	Worldwide	Country	Research Center	Nikkei Asian Review
link 43	Infected cases	Dashboard	Esri	ArcGIS API for JavaScript	Worldwide	Region	Private Company	Esri
link 44	Infected cases	Explorer	-	MapBox	Worldwide	City	University	Tsinghua University
link 45	Infected cases	Explorer	Esri	not stated	Worldwide	Country	Multilateral Institution	WHO
link 46	Infected cases	Explorer	amCharts	Bing, HERE Technologies	Worldwide		Multilateral Institution	OECD

Table A1. Cont.

URL	DataUnit	Category	VizTechnology	MapTechnology	GeoCoverage	MaxGeoDetail	OwnerType	OwnerName
link 47	Infected cases	Explorer	Leaflet	Leaflet	Worldwide	Country	Multilateral Institution	World Bank
link 48	Infected cases	Explorer	SAS Viya	Esri	Worldwide	Country	Private Company	SAS Viya
link 49	Infected cases	Explorer	OurWorldinData	OurWorldinData	Worldwide	Country	Research Center	University of Oxford
link 50	Infected cases	InfoGraphic	DataWrapper	DataWrapper	Africa	Country	Newspaper/platform	African Arguments
link 51	Infected cases	InfoGraphic	LA Times proprietary	MapBox, OpenStreetMap	California	US County	Newspaper/platform	LA Times
link 52	Infected cases	InfoGraphic	Chartbeat	React Simple Maps	California	US County	Newspaper/platform	San Francisco Chronicle
link 53	Infected cases	InfoGraphic	Gatsby	-	Canada	Province	Private Person	nicolasbent@rogers.com
link 54	Infected cases	InfoGraphic	SCMP proprietary	OpenStreetMap	China	City	Newspaper/platform	South China Morning Post
link 55	Infected cases	InfoGraphic	-	-	China, USA	-	Newspaper/platform	NY Times
link 56	Infected cases	InfoGraphic	Qlik	Idevio Map	Europe	Province	European Agency	ECDC
link 57	Infected cases	InfoGraphic	Highcharts	W3 GeoMetadataOverSvg	France	Province	Newspaper/platform	Le Monde
link 58	Infected cases	InfoGraphic	Infogram	-	Iceland	Region	National Institution	Department of Civil Protection
link 59	Infected cases	InfoGraphic	Manuale	Excel e simili	Italy	Province	National Institution	ISS Epicentro
link 60	Infected cases	InfoGraphic	DataWrapper, Flourish	OpenMapTiles, OpenStreetMap	Italy	Province	Newspaper/platform	Il Sole 24 ore
link 61	Infected cases	InfoGraphic	Flourish	Not Applicable (no map)	Italy	Province	Newspaper/platform	ilparmense.net
link 62	Infected cases	InfoGraphic	Flourish	Flourish	Italy	Province	Newspaper/platform	Sky
link 63	Infected cases	InfoGraphic	Microsoft Power BI	Bing	Italy	Province	Private Person	Matteo Contrini
link 64	Infected cases	InfoGraphic	ApexCharts.js	Leaflet	Italy	Province	Private Person	Mauro Torresi
link 65	Infected cases	InfoGraphic	-	Not Applicable (no map)	Italy	Province	Research Center	GIMBE Foundation
link 66	Infected cases	InfoGraphic	Manuale	Excel	Italy	Region	National Institution	Istituto Superiore di Sanità
link 67	Infected cases	InfoGraphic	Flourish	OpenMapTiles, OpenStreetMap	Italy	Region	Newspaper/platform	Repubblica/Gedi
link 68	Infected cases	InfoGraphic	Tableau	OpenStreetMap, MapBox	Italy	Region	Private Person	Filippo Mastroianni
link 69	Infected cases	InfoGraphic	Tableau	-	Italy	Region	Private Person	Filippo Mastroianni
link 70	Infected cases	InfoGraphic	-	-	Italy	Region	University	Renato Guseo
link 71	Infected cases	Infographic	-	-	Italy	-	Newspaper/platform	Corriere della Sera
link 72	Infected cases	InfoGraphic	MapBox	MapBox, OpenStreetMap	Japan	Region	Private Person	Shane Reustle
link 73	Infected cases	InfoGraphic	-	-	Lombardia	Municipality	Newspaper/platform	Corriere della Sera
link 74	Infected cases	InfoGraphic	Tableau	Not Applicable (no map)	Philippines	Province	National Institution	Philippines Dept of Public Health
link 75	Infected cases	InfoGraphic	Flourish	Not Applicable (no map)	Serbia	Country	Independent group	Balkan Investigative Reporting Network
link 76	Infected cases	InfoGraphic	Excel	-	Spain	Region	National Institution	Ministero de Sanidad
link 77	Infected cases	InfoGraphic	DataWrapper	Not Applicable (no map)	Spain	Region	Newspaper/platform	El Pais
link 78	Infected cases	InfoGraphic	DataWrapper	MapBox, OpenStreetMap	Spain	Region	Newspaper/platform	eldiario
link 79	Infected cases	InfoGraphic	Leaflet	OpenStreetMap	UK	Province	National Institution	Gov UK
link 80	Infected cases	InfoGraphic	Datawrapper	Datawrapper	USA	Country	Private Company	Datawrapper
link 81	Infected cases	InfoGraphic	-	React Simple Maps	USA	US County	National Institution	CDC Centre for disease control and prevention
link 82	Infected cases	InfoGraphic	MapBox	MapBox	USA	US County	Newspaper/platform	Nytimes
link 83	Infected cases	InfoGraphic	SharedGeo	SharedGeo.com	USA	US County	NGO	SharedGeo
link 84	Infected cases	InfoGraphic	Tableau	OpenStreetMap, MapBox	USA	US State	Private Person	kbiehle
link 85	Infected cases	InfoGraphic	ArcGIS StoryMaps	OpenStreetMap, HERE, Garmin, ...	Worldwide	-	Private company	Esri
link 86	Infected cases	InfoGraphic	Highcharts	Not Applicable (no map)	Worldwide	Country	Independent group	Worldometer
link 87	Infected cases	InfoGraphic	Esri	-	Worldwide	Country	Newspaper/platform	Repubblica/Gedi
link 88	Infected cases	InfoGraphic	Microsoft Power BI	Bing, HERE Technologies	Worldwide	Country	Private Person	Andrzej Leszkiewicz
link 89	Infected cases	InfoGraphic	Microsoft Power BI	Bing	Worldwide	Province	Private Person	Andrea Benedetti
link 90	Infected cases	InfoGraphic	HiChart	HiChart	Worldwide	Country	Multilateral Institution	UNESCO
link 91	Infected cases	InfoGraphic	Proprietary	Google Maps API	Worldwide	Country	Private Company	thebaselab
link 92	Infected cases	InfoGraphic	Google	Not Applicable (no map)	Worldwide	Country	Private Company	Google
link 93	Infected cases	InfoGraphic	Tableau	OpenStreetMap, MapBox	Worldwide	Country	Research Center	Kaiser Family Foundation

Table A1. Cont.

URL	DataUnit	Category	VizTechnology	MapTechnology	GeoCoverage	MaxGeoDetail	OwnerType	OwnerName
link 94	Virus Sequence	Dashboard	-	Leaflet	Worldwide	Country	Research Center	National Center for Biotechnology Information
link 95	Virus Sequence	Dashboard	Leaflet	OpenStreetMap	Worldwide	Country	Research Center	Los Alamos National Laboratory
link 96	Virus Sequence	Dashboard	-	-	Worldwide	Country	Research Center	China National Center for Bioinformation
link 97	Virus Sequence	Dashboard	Leaflet	OpenStreetMap	Worldwide	Country	University	King Abdullah University of Science and Technology
link 98	Virus Sequence	Dashboard	Leaflet	OpenStreetMap	Worldwide	Country	University	Indiana University
link 99	Virus Sequence	Dashboard	-	-	Worldwide	Country	University	Drexel University
link 100	Virus Sequence	Explorer	-	-	Worldwide	City	University	Hunter College of the City University of New York.
link 101	Virus Sequence	Explorer	Leaflet	MapBox, OpenStreetMap	Worldwide	Country	Research Center	Nextstrain
link 102	Virus Sequence	Explorer	Leaflet	MapBox, OpenStreetMap	Worldwide	Point	Research Center	Centre for Genomic Pathogen Surveillance
link 103	Cases connections	Dashboard	MapBox	MapBox, OpenStreetMap	Worldwide	City	Research Center	GlamViz Project
link 104	Days 0 new cases	InfoGraphic	Tableau	Tableau	Italy	Province	Newspaper/platform	Il Sole 24 ore
link 105	Development	InfoGraphic	Google DataStudio	-	Worldwide	Country	Multilateral Institution	UNDP
link 106	Emergency Solidarity	Dashboard	Leaflet+Django	uMap	Campania	Municipality	-	-
link 107	Fever measurements	Dashboard	MapBox	MapBox, OpenStreetMap	USA	US County	Research Center	Kingsa
link 108	Forecasting	Explorer	causal.app	Not Applicable (no map)	USA	-	Private Person	@mackgrenfell
link 109	Forecasting	Explorer	Proprietary	Not Applicable (no map)	Worldwide	Country	Research Center	Institute for Health Metrics and Evaluation (IHME)
link 110	Forecasting	Explorer	-	Not Applicable (no map)	Worldwide	Country	University	Biozentrum, University of Basel
link 111	Forecasting	Explorer	-	Not Applicable (no map)	Worldwide	Country	University	University of Melbourne
link 112	healthcare capacity	Dashboard	MapBox	MapBox, OpenStreetMap	USA	US County	NGO	Covidcare.org
link 113	Information	Dashboard	JRC	JRC	Worldwide	Country	Multilateral Institution	WHO-JRC
link 114	Information	Dashboard	Scribble	Scribble	Worldwide	Country	Private Person	Angelo Turco, Rachele Piras
link 115	Mask Finder	Dashboard	MapBox	MapBox, OpenStreetMap	Taiwan	Point	Private Person	Che-Lin Chan and Chi-Yung Yang
link 116	Mobility Change	InfoGraphic	-	Not Applicable (no map)	Italy	Region	Private Company	Google
link 117	Rich and Poor	InfoGraphic	-	Not Applicable (no map)	USA	City	Newspaper/platform	NewYorkTime
link 118	School Feeding	Dashboard	MapBox	MapBox, OpenStreetMap	Worldwide	Country	Multilateral Institution	WFP
link 119	Sentiment	InfoGraphic	Leaflet	Leaflet	Worldwide	Province	Research Center	Fondazione Bruno Kesler
link 120	Supplies	InfoGraphic	MS Power Bi	-	Italy	Region	National Institution	Protezione Civile
link 121	Traffic	Dashboard	MapBox	MapBox, OpenStreetMap	San Francisco	Municipality	Private Company	MapBox

Table A2. A list of collections of dashboards.

URL	OwnerType	OwnerName
link1	Private Company	Tableau
link2	Private Company	Tableau
link3	Private Company	MapBox
link4	mostly private persons	Various
link5	Private Company	WHO
link6	Research Center	University of Minnesota
link7	Private Company	Tableau
link8	Private Company	ESRI
link9	Private Company	ESRI
link10	Private Company	Tableau
link11	Private Person	Wiki-Community
link12	Private Person	LauzHack
link13	Research Center	Asona
link14	Private Person	Ultrahack
link15	Private Person	Hamel Husain

References

- World Health Organization. WHO Outbreak Communication Guidelines. 2005. Available online: https://www.who.int/csr/resources/publications/WHO_CDS_2005_28/en/ (accessed on 23 January 2021).
- Bonaccorsi, G.; Pierri, F.; Cinelli, M.; Flori, A.; Galeazzi, A.; Porcelli, F.; Schmidt, A.L.; Valensise, C.M.; Scala, A.; Quattrocchi, W.; et al. Economic and social consequences of human mobility restrictions under COVID-19. *Proc. Natl. Acad. Sci. USA* **2020**, *117*, 15530–15535. [[CrossRef](#)]
- Grandi, S.; Bernasconi, A. Convergence of web design and spatial, statistical, genomic and epidemiological information: the case of geo-dashboards in the Covid-19 crisis. *Doc. Geogr.* **2020**, *463–476*. (In Italian)
- Van Kerkvoorde, M.; Kellens, W.; Verfaillie, E.; Ooms, K. Evaluation of web maps for the communication of flood risks to the public in Europe. *Int. J. Cartogr.* **2018**, *4*, 49–64. [[CrossRef](#)]
- European Parliament and Council. Directive 2007/60/EC on the Assessment and Management of Flood Risks. 2007. Available online: <https://eur-lex.europa.eu/legal-content/EN/TXT/HTML/?uri=CELEX:32007L0060> (accessed on 23 January 2021).
- Gao, S.; Mioc, D.; Anton, F.; Yi, X.; Coleman, D.J. Online GIS services for mapping and sharing disease information. *Int. J. Health Geogr.* **2008**, *7*, 8. [[CrossRef](#)] [[PubMed](#)]
- Kitchin, R.; Linehan, D.; O’Callaghan, C.; Lawton, P. Public geographies through social media. *Dialogues Hum. Geogr.* **2013**, *3*, 56–72. [[CrossRef](#)]
- Comitato Scientifico delle Giornate della Geografia. Manifesto per una Public Geography. 2007. Available online: <https://www.ageiweb.it/wp-content/uploads/2018/03/Manifesto-Public-Geography-DEF.pdf> (accessed on 23 January 2021). (In Italian)
- Kamel Boulos, M.N.; Geraghty, E.M. Geographical tracking and mapping of coronavirus disease COVID-19/severe acute respiratory syndrome coronavirus 2 (SARS-CoV-2) epidemic and associated events around the world: How 21st century GIS technologies are supporting the global fight against outbreaks and epidemics. *Int. J. Health Geogr.* **2020**, *19*, 8. [[CrossRef](#)]
- Delmelle, E.; Páez, A.; Kanaroglou, P. *Spatial Analysis in Health Geography*; Ashgate Publishing, Ltd.: Farnham, UK, 2015.
- Lewis, D. Health geography and the future of data. In *Routledge Handbook of Health Geography*; Routledge: Abingdon, UK, 2018; Chapter 45. [[CrossRef](#)]
- Beale, L.; Kanaroglou, P.; Delmelle, E.; Paez, A. *Effective Use of GIS for Spatial Epidemiology*; Ashgate Publishing, Ltd.: Surrey, UK, 2015.
- Lyseen, A.K.; Nøhr, C.; Sørensen, E.M.; Gudes, O.; Geraghty, E.; Shaw, N.T.; Bivona-Tellez, C. A review and framework for categorizing current research and development in health related geographical information systems (GIS) studies. *Yearb. Med. Inform.* **2014**, *9*, 110. [[PubMed](#)]
- Dong, E.; Du, H.; Gardner, L. An interactive web-based dashboard to track COVID-19 in real time. *Lancet Infect. Dis.* **2020**, *20*, 533–534. [[CrossRef](#)]
- Schoelen, M. How your GIS Department can Respond to COVID-19. Available online: <https://www.esri.com/arcgis-blog/products/apps/local-government/how-your-gis-department-can-respond-to-covid-19/> (accessed on 23 January 2021).
- Xu, B.; Kraemer, M.U.; Gutierrez, B.; Mekar, S.; Sewalk, K.; Loskill, A.; Wang, L.; Cohn, E.; Hill, S.; Zarebski, A.; et al. Open access epidemiological data from the COVID-19 outbreak. *Lancet Infect. Dis.* **2020**, *20*, 534. [[CrossRef](#)]
- Muhareb, R.; Giacaman, R. Tracking COVID-19 responsibly. *Lancet* **2020**. [[CrossRef](#)]
- Rosenkrantz, L.; Schuurman, N.; Bell, N.; Amram, O. The need for GIScience in mapping COVID-19. *Health Place* **2020**, *102389*. [[CrossRef](#)] [[PubMed](#)]

19. Everts, J. The dashboard pandemic. *Dialogues Hum. Geogr.* **2020**, *10*, 260–264. [CrossRef]
20. Zuo, X.; Chen, Y.; Ohno-Machado, L.; Xu, H. How do we share data in COVID-19 research? A systematic review of COVID-19 datasets in PubMed Central Articles. *Brief. Bioinform.* **2020**, bbaa331. [CrossRef]
21. Zhou, C.; Su, F.; Pei, T.; Zhang, A.; Du, Y.; Luo, B.; Cao, Z.; Wang, J.; Yuan, W.; Zhu, Y.; et al. COVID-19: Challenges to GIS with big data. *Geogr. Sustain.* **2020**. [CrossRef]
22. Jia, Q.; Guo, Y.; Wang, G.; Barnes, S.J. Big Data Analytics in the Fight against Major Public Health Incidents (Including COVID-19): A Conceptual Framework. *Int. J. Environ. Res. Public Health* **2020**, *17*, 6161. [CrossRef] [PubMed]
23. Law, D. Dashboards for Emergency Response. Available online: <https://www.esri.com/arcgis-blog/products/ops-dashboard/decision-support/dashboards-for-emergency-response/> (accessed on 23 January 2021).
24. Xu, B.; Gutierrez, B.; Mekaru, S.; Sewalk, K.; Goodwin, L.; Loskill, A.; Cohn, E.L.; Hswen, Y.; Hill, S.C.; Cobo, M.M.; et al. Epidemiological data from the COVID-19 outbreak, real-time case information. *Sci. Data* **2020**, *7*, 1–6. [CrossRef]
25. Promoting best practice in nucleotide sequence data sharing. *Sci. Data* **2020**, *7*, 152. [CrossRef] [PubMed]
26. Wissel, B.D.; Van Camp, P.; Kouril, M.; Weis, C.; Glauser, T.A.; White, P.S.; Kohane, I.S.; Dexheimer, J.W. An interactive online dashboard for tracking COVID-19 in us counties, cities, and states in real time. *J. Am. Med Inform. Assoc.* **2020**. [CrossRef] [PubMed]
27. Murray, C.J.; Alamro, N.M.S.; Hwang, H.; Lee, U. Digital public health and COVID-19. *Lancet Public Health* **2020**, *5*, e469–e470. [CrossRef]
28. World Health Organization. WHO Coronavirus Disease (COVID-19) Dashboard. 2020. Available online: <https://covid19.who.int/> (accessed on 23 January 2021).
29. Vallega, A. *Geografia culturale: Luoghi, Spazi, Simboli*; UTET Università: Salt Lake City, UT, USA, 2005; ISBN 9788860081049. (In Italian)
30. Bernasconi, A.; Ceri, S.; Campi, A.; Masseroli, M. Conceptual Modeling for Genomics: Building an Integrated Repository of Open Data. In *Conceptual Modeling*; Mayr, H.C., Guizzardi, G., Ma, H., Pastor, O., Eds.; Springer International Publishing: Cham, Switzerland, 2017; pp. 325–339.
31. Román, J.F.R.; Pastor, Ó.; Casamayor, J.C.; Valverde, F. Applying conceptual modeling to better understand the human genome. In *International Conference on Conceptual Modeling*; Springer: Cham, Switzerland, 2016; pp. 404–412.
32. Bernasconi, A.; Canakoglu, A.; Pinoli, P.; Ceri, S. Empowering Virus Sequence Research Through Conceptual Modeling. In *International Conference on Conceptual Modeling*; Springer: Cham, Switzerland, 2020; pp. 388–402.
33. Bernasconi, A.; Canakoglu, A.; Masseroli, M.; Ceri, S. The road towards data integration in human genomics: Players, steps and interactions. *Brief. Bioinform.* **2021**, *22*, 30–44. [CrossRef]
34. Johnson, S.; Friedman, C.; Cimino, J.; Clark, T.; Hripsak, G.; Clayton, P.D. Conceptual data model for a central patient database. In *Proceedings of the Annual Symposium on Computer Application in Medical Care*; American Medical Informatics Association: Bethesda, MD, USA, 1991; p. 381.
35. Grossman, R.L.; Heath, A.P.; Ferretti, V.; Varmus, H.E.; Lowy, D.R.; Kibbe, W.A.; Staudt, L.M. Toward a shared vision for cancer genomic data. *N. Engl. J. Med.* **2016**, *375*, 1109–1112. [CrossRef]
36. COVID-19 Host Genetics Initiative. The COVID-19 Host Genetics Initiative, a global initiative to elucidate the role of host genetic factors in susceptibility and severity of the SARS-CoV-2 virus pandemic. *Eur. J. Hum. Genet.* **2020**, *28*, 715–718. [CrossRef]
37. Bernasconi, A.; Canakoglu, A.; Masseroli, M.; Pinoli, P.; Ceri, S. A review on viral data sources and search systems for perspective mitigation of COVID-19. *Brief. Bioinform.* **2020**, bbaa359. [CrossRef]
38. Cliff, A.D.; Haggett, P. Spatial aspects of epidemic control. *Prog. Hum. Geogr.* **1989**, *13*, 315–347. [CrossRef]
39. Iliinsky, N.; Steele, J. *Designing data Visualizations: Representing informational Relationships*; O'Reilly Media, Inc.: Newton, MA, USA, 2011.
40. Harrison, L.; Reinecke, K.; Chang, R. Infographic aesthetics: Designing for the first impression. In *Proceedings of the 33rd Annual ACM Conference on Human Factors in Computing Systems*, Seoul, Korea, 18–23 April 2015; pp. 1187–1190.
41. Bateman, S.; Mandryk, R.L.; Gutwin, C.; Genest, A.; McDine, D.; Brooks, C. Useful junk? The effects of visual embellishment on comprehension and memorability of charts. In *Proceedings of the SIGCHI Conference on Human Factors in Computing Systems*, Atlanta, GA, USA, 10–15 April 2010; pp. 2573–2582.
42. Borkin, M.A.; Vo, A.A.; Bylinskii, Z.; Isola, P.; Sunkavalli, S.; Oliva, A.; Pfister, H. What Makes a Visualization Memorable? *IEEE Trans. Vis. Comput. Graph.* **2013**, *19*, 2306–2315. [CrossRef] [PubMed]
43. Buczkowski, A. Top 19 Geovisualization Tools, APIs and Libraries that Will Let You Create Beautiful Web Maps. Available online: <https://geoawesomeness.com/top-19-online-geovisualization-tools-apis-libraries-beautiful-maps/> (accessed on 23 January 2021).
44. Liechti, R.; Gleizes, A.; Kuznetsov, D.; Bougueleret, L.; Le Mercier, P.; Bairoch, A.; Xenarios, I. OpenFluDB, a database for human and animal influenza virus. *Database* **2010**, *2010*. [CrossRef] [PubMed]
45. Neher, R.A.; Bedford, T. nextflu: Real-time tracking of seasonal influenza virus evolution in humans. *Bioinformatics* **2015**, *31*, 3546–3548. [CrossRef]
46. Neher, R.A.; Bedford, T. Real-time analysis and visualization of pathogen sequence data. *J. Clin. Microbiol.* **2018**, *56*. [CrossRef] [PubMed]

47. Polonsky, J.A.; Baidjoe, A.; Kamvar, Z.N.; Cori, A.; Durski, K.; Edmunds, W.J.; Eggo, R.M.; Funk, S.; Kaiser, L.; Keating, P.; et al. Outbreak analytics: a developing data science for informing the response to emerging pathogens. *Philos. Trans. R. Soc. B* **2019**, *374*, 20180276. [[CrossRef](#)]
48. Hadfield, J.; Megill, C.; Bell, S.M.; Huddleston, J.; Potter, B.; Callender, C.; Sagulenko, P.; Bedford, T.; Neher, R.A. Nextstrain: real-time tracking of pathogen evolution. *Bioinformatics* **2018**, *34*, 4121–4123. [[CrossRef](#)]
49. Argimón, S.; Abudahab, K.; Goater, R.J.; Fedosejev, A.; Bhai, J.; Glasner, C.; Feil, E.J.; Holden, M.T.; Yeats, C.A.; Grundmann, H.; et al. Microreact: Visualizing and sharing data for genomic epidemiology and phylogeography. *Microb. Genom.* **2016**, *2*. [[CrossRef](#)] [[PubMed](#)]
50. Theys, K.; Vandamme, A.M.; Lemey, P.; Baele, G. Advances in visualisation tools for phylogenomic and phylodynamic studies of viral diseases. *Front. Public Health* **2019**, *7*, 208. [[CrossRef](#)]
51. Hatcher, E.L.; Zhdanov, S.A.; Bao, Y.; Blinkova, O.; Nawrocki, E.P.; Ostapchuck, Y.; Schäffer, A.A.; Brister, J.R. Virus Variation Resource—improved response to emergent viral outbreaks. *Nucleic Acids Res.* **2017**, *45*, D482–D490. [[CrossRef](#)] [[PubMed](#)]
52. Canakoglu, A.; Pinoli, P.; Bernasconi, A.; Alfonsi, T.; Melidis, D.P.; Ceri, S. ViruSurf: an integrated database to investigate viral sequences. *Nucleic Acids Res.* **2021**, *49*, D817–D824. [[CrossRef](#)]
53. Korber, B.; Fischer, W.M.; Gnanakaran, S.; Yoon, H.; Theiler, J.; Abfalterer, W.; Hengartner, N.; Giorgi, E.E.; Bhattacharya, T.; Foley, B.; et al. Tracking changes in SARS-CoV-2 Spike: evidence that D614G increases infectivity of the COVID-19 virus. *Cell* **2020**. [[CrossRef](#)] [[PubMed](#)]
54. Zhao, W.M.; Song, S.H.; Chen, M.L.; Zou, D.; Ma, L.N.; Ma, Y.K.; Li, R.J.; Hao, L.L.; Li, C.P.; Tian, D.M.; et al. The 2019 novel coronavirus resource. *Yi Chuan Hered.* **2020**, *42*, 212–221.
55. Fang, S.; Li, K.; Shen, J.K.; Liu, S.; Liu, J.; Yang, L.; Hu, C.D.; Wan, J. GESS: A database of Global Evaluation of SARS-CoV-2/hCoV-19 Sequences. *Nucleic Acids Res.* **2020**. [[CrossRef](#)] [[PubMed](#)]
56. Zhao, Z.; Sokhansanj, B.A.; Malhotra, C.; Zheng, K.; Rosen, G.L. Genetic grouping of SARS-CoV-2 coronavirus sequences using informative subtype markers for pandemic spread visualization. *PLoS Comput. Biol.* **2020**, *16*, e1008269. [[CrossRef](#)]
57. Akther, S.; Bezrucenkovas, E.; Sulkow, B.; Panlasigui, C.; Li, L.; Qiu, W.; Di, L. CoV Genome Tracker: tracing genomic footprints of Covid-19 pandemic. *bioRxiv* **2020**. [[CrossRef](#)]
58. Hodcroft, E.B.; Zuber, M.; Nadeau, S.; Crawford, K.H.D.; Bloom, J.D.; Veessler, D.; Comas, I.; Candelas, F.G.; Stadler, T.; Neher, R.A.; et al. Emergence and spread of a SARS-CoV-2 variant through Europe in the summer of 2020. *medRxiv* **2020**. [[CrossRef](#)]
59. Rambaut, A.; Loman, N.; Pybus, O.; Barclay, W.; Barrett, J.; Carabelli, A.; Connor, T.; Peacock, T.; Robertson, D.L.; Volz, E. COVID-19 Genomics Consortium UK (CoG-UK). Preliminary Genomic Characterisation of an Emergent SARS-CoV-2 Lineage in the UK Defined by a Novel Set of Spike Mutations. Available online: <https://virological.org/t/preliminary-genomic-characterisation-of-an-emergent-sars-cov-2-lineage-in-the-uk-defined-by-a-novel-set-of-spike-mutations/563> (accessed on 23 January 2021).
60. Dixit, R.A.; Hurst, S.; Adams, K.T.; Boxley, C.; Lysen-Hendershot, K.; Bennett, S.S.; Booker, E.; Ratwani, R.M. Rapid Development of Visualization Dashboards to Enhance Situation Awareness of COVID-19 Telehealth Initiatives at a Multi-Hospital Healthcare System. *J. Am. Med Informatics Assoc.* **2020**. [[CrossRef](#)]
61. IHME COVID-19 Forecasting Team. Modeling COVID-19 scenarios for the United States. *Nat. Med.* **2020**. [[CrossRef](#)]
62. Weissman, G.E.; Crane-Droesch, A.; Chivers, C.; Luong, T.; Hanish, A.; Levy, M.Z.; Lubken, J.; Becker, M.; Draugelis, M.E.; Anesi, G.L.; et al. Locally informed simulation to predict hospital capacity needs during the COVID-19 pandemic. *Ann. Intern. Med.* **2020**, *173*, 21–28. [[CrossRef](#)]
63. Noll, N.B.; Aksamentov, I.; Druelle, V.; Badenhorst, A.; Ronzani, B.; Jefferies, G.; Albert, J.; Neher, R. COVID-19 Scenarios: an interactive tool to explore the spread and associated morbidity and mortality of SARS-CoV-2. *medRxiv* **2020**. [[CrossRef](#)]
64. Chande, A.; Lee, S.; Harris, M.; Nguyen, Q.; Beckett, S.J.; Hilley, T.; Andris, C.; Weitz, J.S. Real-time, interactive website for US-county-level COVID-19 event risk assessment. *Nat. Hum. Behav.* **2020**, *4*, 1313–1319. [[CrossRef](#)] [[PubMed](#)]
65. Chen, P.P.S. The entity-relationship model—Toward a unified view of data. *ACM Trans. Database Syst.* **1976**, *1*, 9–36. [[CrossRef](#)]
66. Batini, C.; Ceri, S.; Navathe, S.B. *Conceptual Database Design: An Entity-Relationship Approach*; Benjamin-Cummings Publishing Co., Inc.: San Francisco, CA, USA, 1991.
67. Yazici, A.; Akkaya, K. Conceptual modeling of geographic information system applications. In *Recent Issues on Fuzzy Databases*; Springer: Berlin/Heidelberg, Germany, 2000; pp. 129–151.
68. Rivett, P. Conceptual data modelling in an archaeological GIS. In *Proceedings of the GeoComputation, Otago, New Zealand, 26–29 August 1997; Volume 97*.
69. Piccinini, F.; Pierdicca, R.; Malinverni, E.S. A Relational Conceptual Model in GIS for the Management of Photovoltaic Systems. *Energies* **2020**, *13*, 2860. [[CrossRef](#)]
70. Hynek, J.; Hruška, T. Automatic evaluation of information dashboard usability. *Int. J. Adv. Comput. Sci. Appl.* **2015**, *5*, 383–387.
71. Motta Zanin, G.; Gentile, E.; Parisi, A.; Spasiano, D. A Preliminary Evaluation of the Public Risk Perception Related to the COVID-19 Health Emergency in Italy. *Int. J. Environ. Res. Public Health* **2020**, *17*, 3024. [[CrossRef](#)]