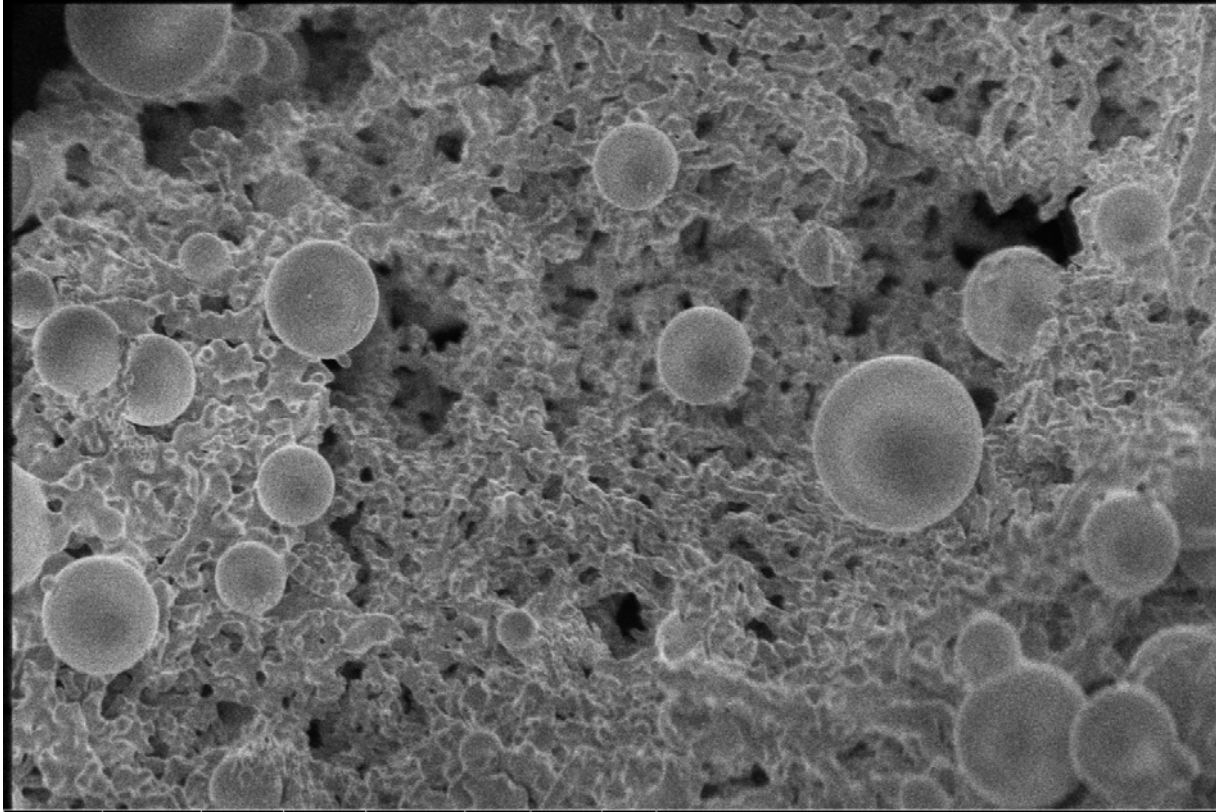


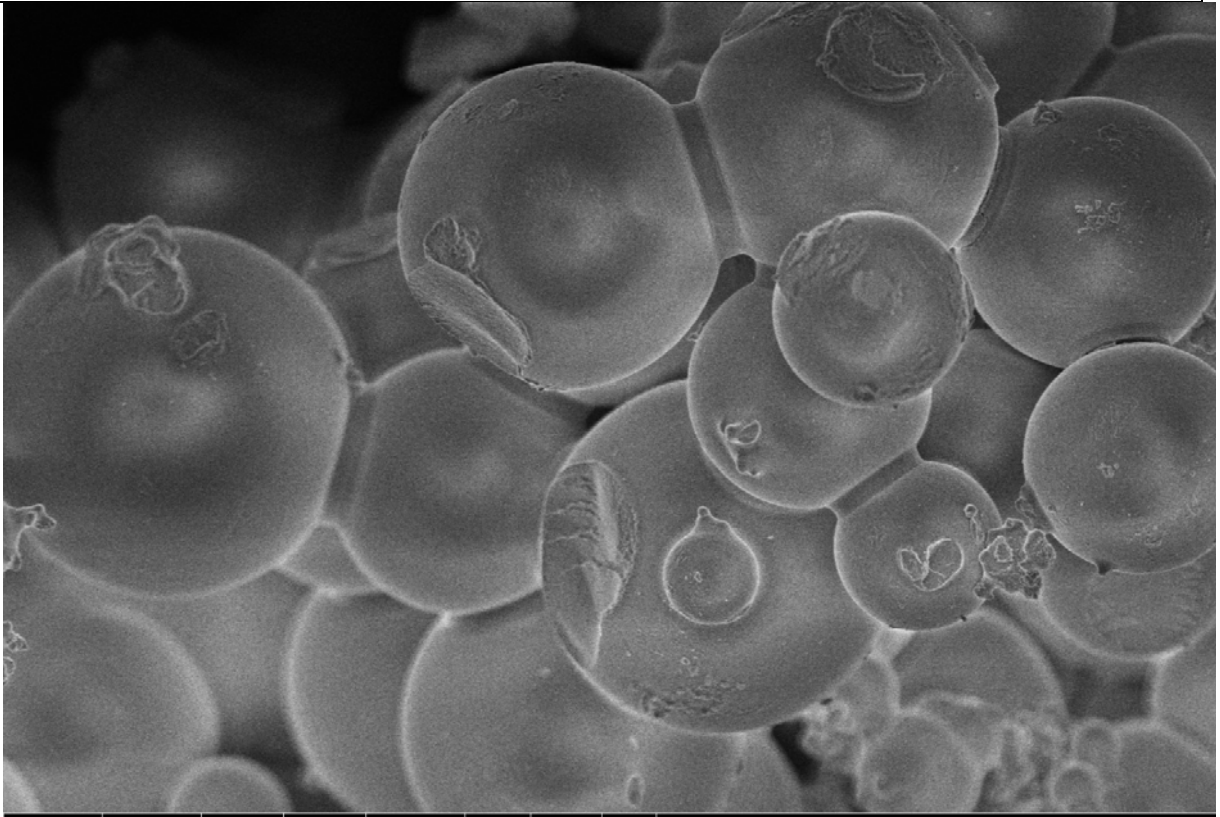
CNF-W



mag	HV	curr	bias	WD	det	mode	tilt
5 009 x	1.00 kV	13 pA	500 V	4.3 mm	TLD	BD	0 °

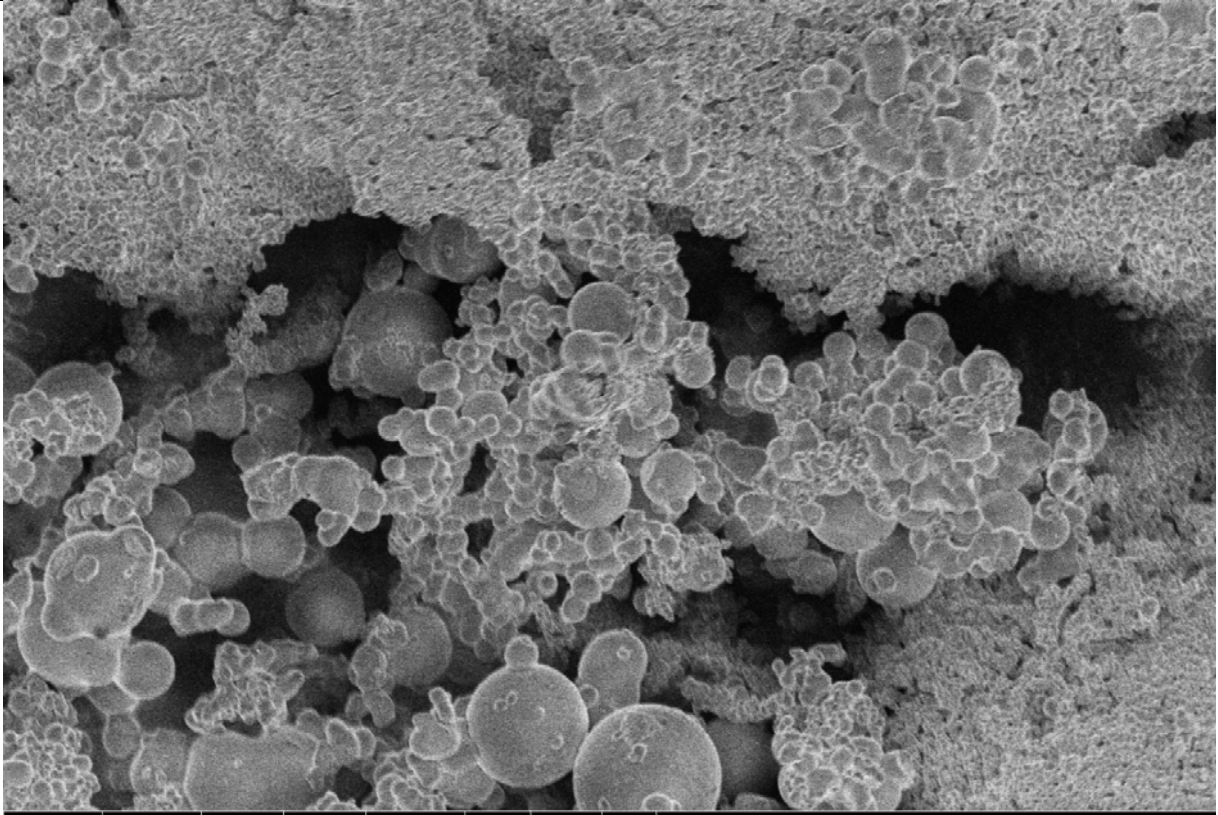
10 μ m
NCSU AIF Verios 460L

CNF-CA



mag	HV	curr	bias	WD	det	mode	tilt	10 μ m	
5 008 x	1.00 kV	13 pA	500 V	4.3 mm	TLD	BD	0 °	NCSU AIF Verios 460L	

Pulp-W

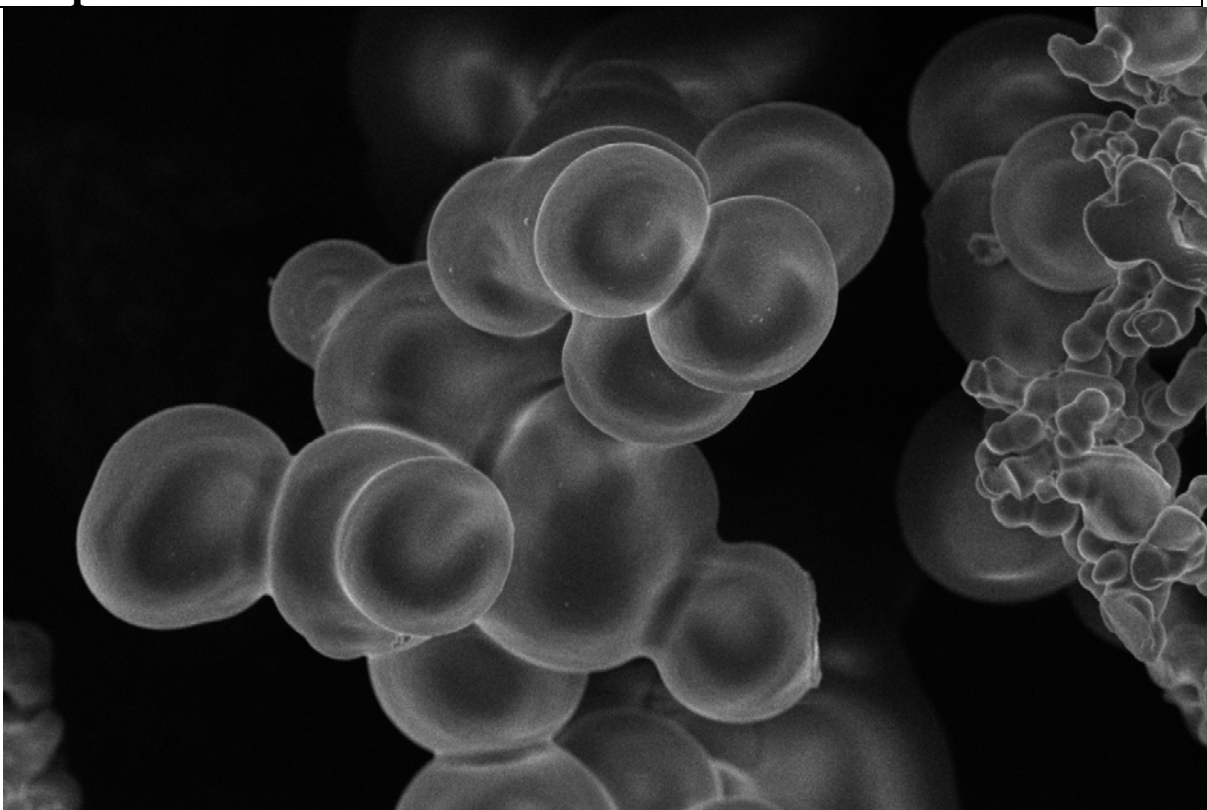


mag	HV	curr	bias	WD	det	mode	tilt
4 994 x	1.00 kV	13 pA	500 V	4.3 mm	TLD	BD	0 °

10 μm

NCSU AIF Verios 460L

Pulp-CA



mag	HV	curr	bias	WD	det	mode	tilt	10 μ m	
5 005 x	2.00 kV	13 pA	500 V	4.4 mm	TLD	BD	0 °	NCSU AIF Verios 460L	