

Supporting information

A Study of optimization using porous clay heterostructure with alginate encapsulation for toluene removal

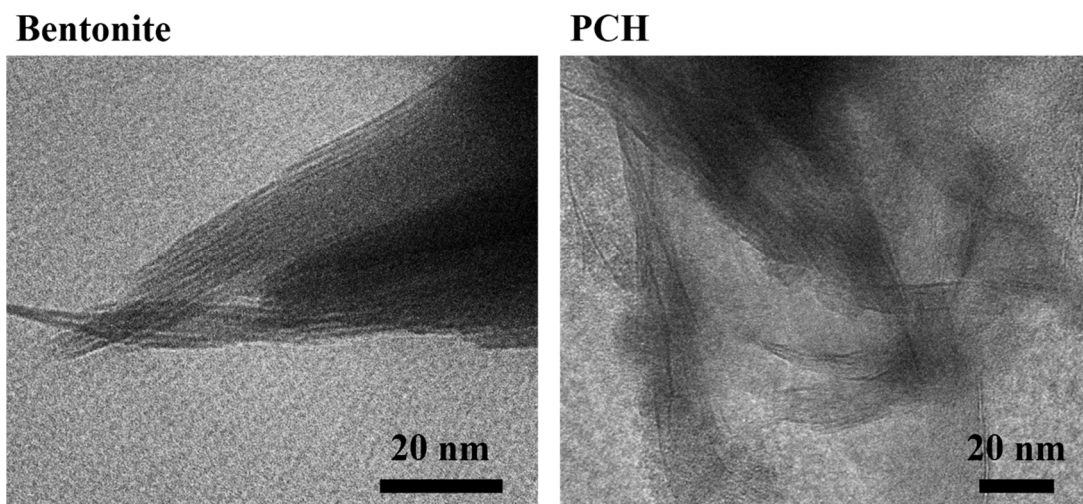


Figure S1. Transmission electron microscopy images of bentonite and PCH.

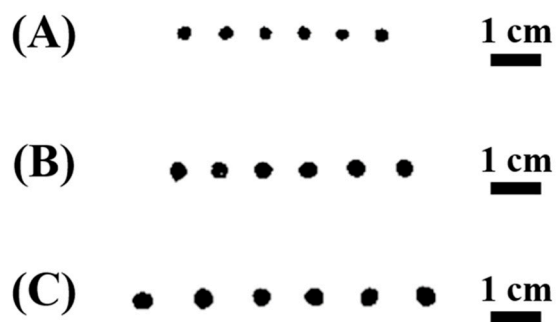


Figure S2. Converted photographs of Alg-PCH prepared by three different extrusion tips (A) 2, (B) 3 and (C) 4 mm with ImageJ software.