

Article

# The Effect of a Polyester Nanofibrous Membrane with a Fibrin-Platelet Lysate Coating on Keratinocytes and Endothelial Cells in a Co-Culture System

Andreu Blanquer <sup>1,\*</sup>, Jana Musilkova <sup>1</sup>, Elena Filova <sup>1</sup>, Johanka Taborska <sup>2</sup>, Eduard Brynda <sup>2</sup>, Tomas Riedel <sup>2</sup>, Andrea Klapstova <sup>3</sup>, Vera Jencova <sup>4</sup>, Jana Mullerova <sup>4,5</sup>, Eva Kuzelova Kostakova <sup>4</sup>, Renata Prochazkova <sup>6,7</sup> and Lucie Bacakova <sup>1</sup>

<sup>1</sup> Institute of Physiology of the Czech Academy of Sciences, Videnska 1083, 142 20 Prague 4, Czech Republic; jana.musilkova@fgu.cas.cz (J.M.); elena.filova@fgu.cas.cz (E.F.); Lucie.Bacakova@fgu.cas.cz (L.B.)

<sup>2</sup> Institute of Macromolecular Chemistry of the Czech Academy of Sciences, Heyrovskeho nam. 2, 162 06 Prague 6, Czech Republic; taborska@imc.cas.cz (J.T.); taborska@imc.cas.cz (E.B.); riedel@imc.cas.cz (T.R.)

<sup>3</sup> Faculty of Textile Engineering, Technical University of Liberec, Studentska 1402/2, 461 17 Liberec 1, Czech Republic; andrea.klapstova@tul.cz

<sup>4</sup> Faculty of Science, Humanities and Education, Technical University of Liberec, Studentska 1402/2, 461 17 Liberec 1, Czech Republic; vera.jencova@tul.cz (V.J.); Jana.mullerova@tul.cz (J.M.); Eva.kostakova@tul.cz (E.K.K.)

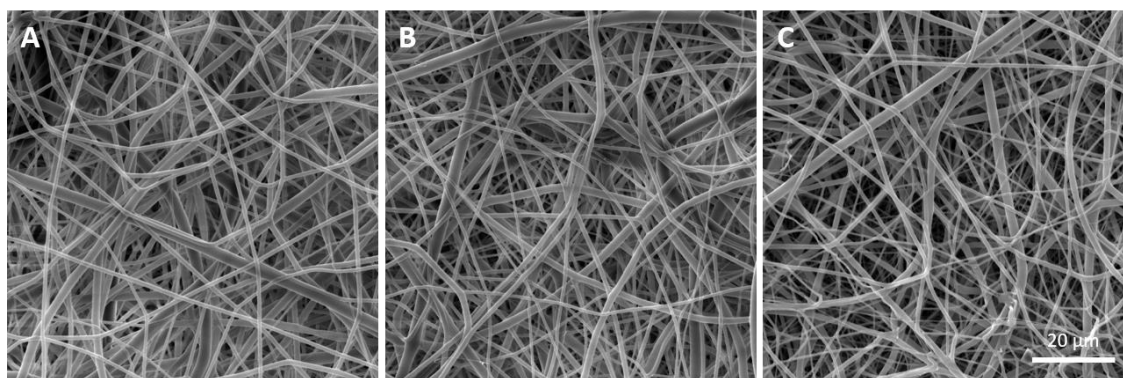
<sup>5</sup> Institute of Nanomaterials, Advanced Technologies and Innovation, Bendlova 1409/7, 460 01 Liberec 1, Czech Republic

<sup>6</sup> Faculty of Health, Technical University of Liberec, Studentska 1402/2, 461 17 Liberec 1, Czech Republic

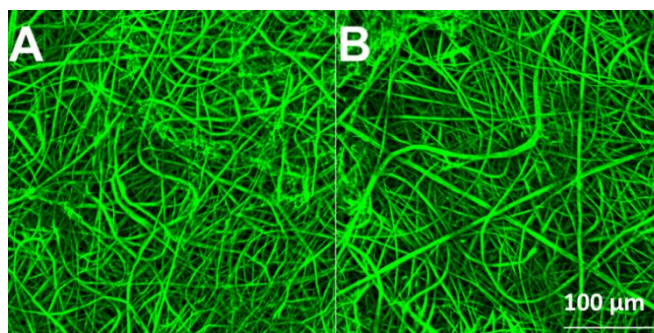
<sup>7</sup> Regional Hospital Liberec, Husova 357/28, 460 01 Liberec 1, Czech Republic; renata.prochazkova@nemlib.cz

\* Correspondence: Andreu.blanquerjerez@fgu.cas.cz; Tel.: +420296443741

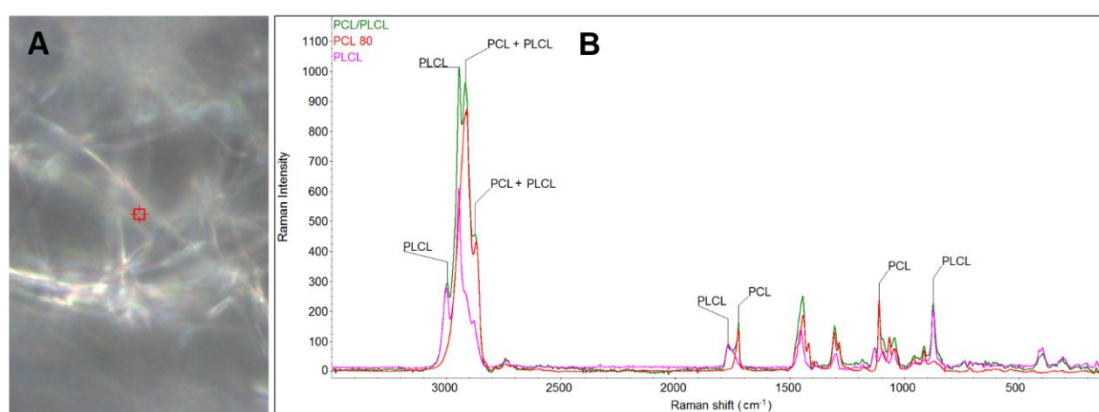
The effect of a polyester nanofibrous membrane with a fibrin-platelet lysate coating on keratinocytes and endothelial cells in a co-culture system



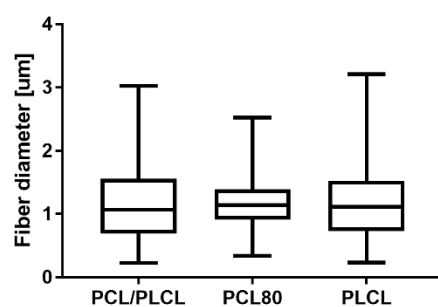
**Figure S1.** SEM images of the nanofibrous membranes: PLCL/PCL membrane (A), lyophilised PLCL/PCL membrane coated with fibrin (B) and lyophilised PLCL/PCL membrane coated with fibrin containing 50% of platelet lysate (C).



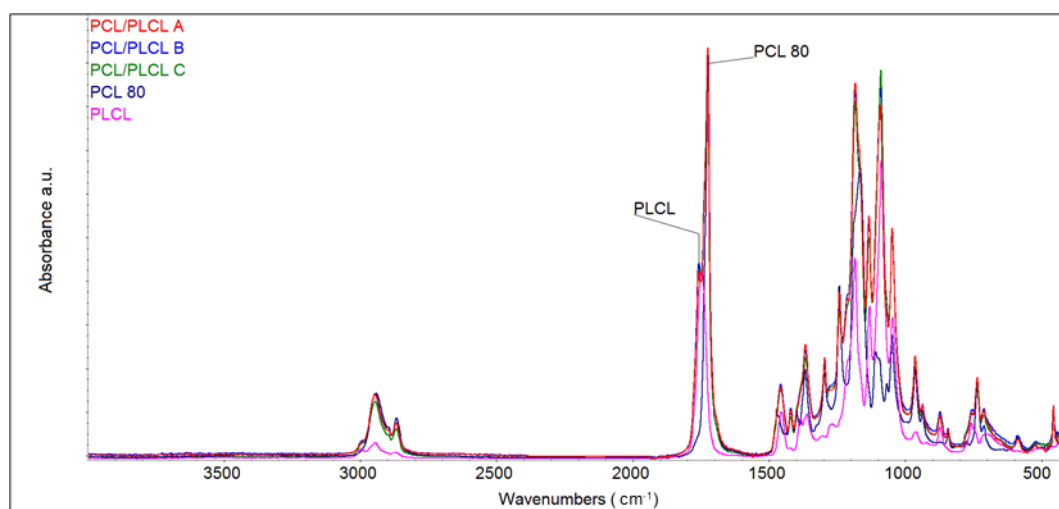
**Figure S2.** CLSM images of the fluorescence-stained proteins on the upper surface of the NF modified from a solution containing Fbg and 50% PL (NF50) observed in PBS after the modification (A) and after one week in PBS (B).



**Figure S3.** Raman spectroscopy analysis: (A) picture of analysed area, (B) obtained Raman shifts of pure PCL, pure PLCL and their PCL/PLCL blend:  $3387\text{ cm}^{-1}$  – stretching vibr. of C-H (PLCL),  $2944\text{ cm}^{-1}$  - stretching vibr. of C-H (PLCL),  $2915\text{ cm}^{-1}$  - stretching vibr. of C-H (PLCL, PCL),  $2873\text{ cm}^{-1}$  - stretching vibr. of C-H (PLCL, PCL),  $1769\text{ cm}^{-1}$  – stretching vibr. of C=O (PLCL),  $1722\text{ cm}^{-1}$  – stretching vibr. C=O (PCL).



**Figure S4.** Graph of the measured values of fiber diameter from three independent series: cumulative PLCL/PCL blend, pure PCL and pure PLCL.



**Figure S5.** FTIR analysis of the pure PCL, pure PLCL and spectra of PLCL/PCL blend from three separately electrospun materials.