

## Supplementary Material

# Fabrication and Characterization of Biodegradable Gelatin Methacrylate/Biphasic Calcium Phosphate Composite Hydrogel for Bone Tissue Engineering

Ji-Bong Choi <sup>1,†</sup>, Yu-Kyoung Kim <sup>1,†</sup>, Seon-Mi Byeon <sup>2</sup>, Jung-Eun Park <sup>1</sup>, Tae-Sung Bae <sup>1</sup>, Yong-Seok Jang <sup>1,\*</sup> and Min-Ho Lee <sup>1,\*</sup>

<sup>1</sup> Department of Dental Biomaterials, Institute of Biodegradable Materials, School of Dentistry, Jeonbuk National University, Jeonju-si, jeollabuk-do, Korea, 54896; submissi@naver.com (J.-B.C.); yk0830@naver.com (Y.-K.K.); pie312@naver.com (J.-E.P.); bts@jbnu.ac.kr (T.-S.B.)

<sup>2</sup> Dental Clinic of Ebarun, Suncheon-si, Jeollanam-do, Korea, 57999; sumse1205@naver.com

\* Correspondence: Yjang@jbnu.ac.kr (Y.-S.J.); mh@jbnu.ac.kr (M.-H.L.)

† These authors contributed equally to the paper.

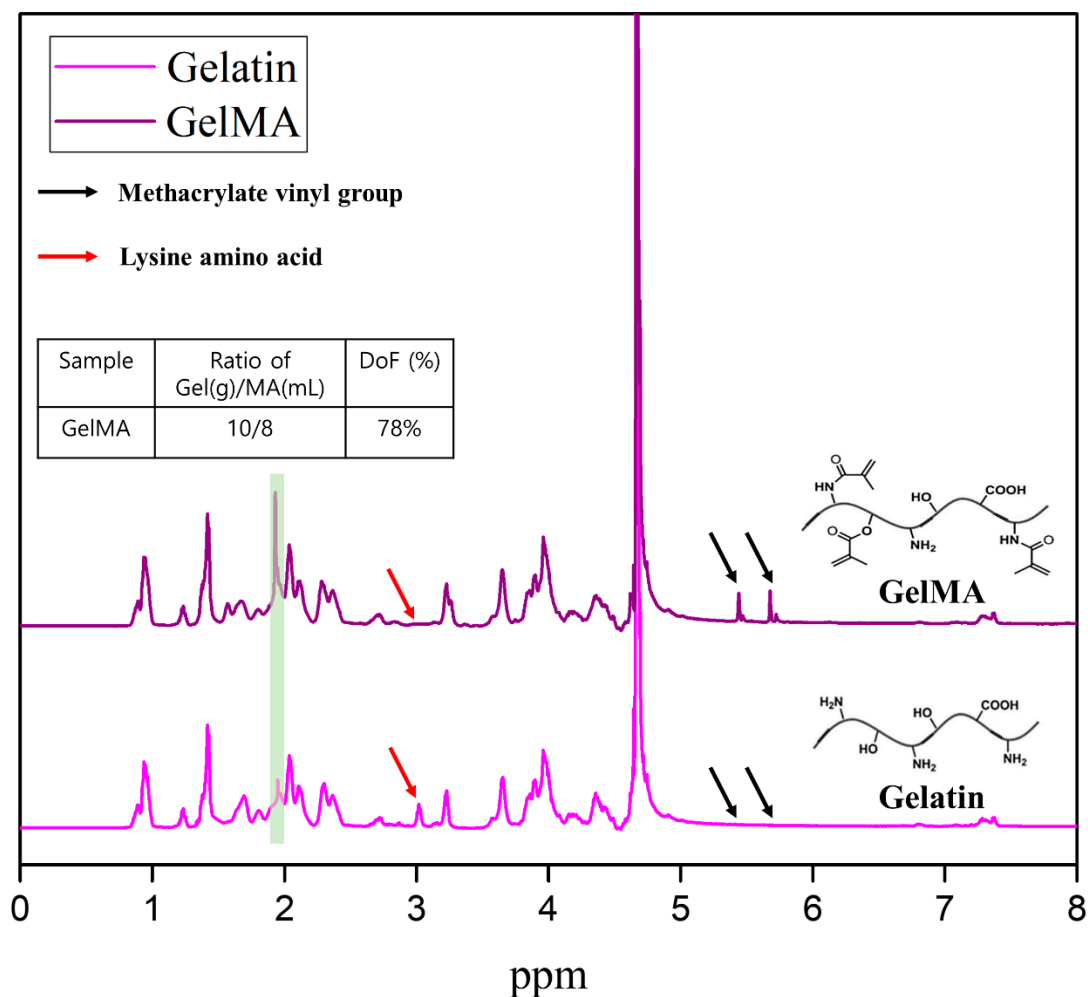
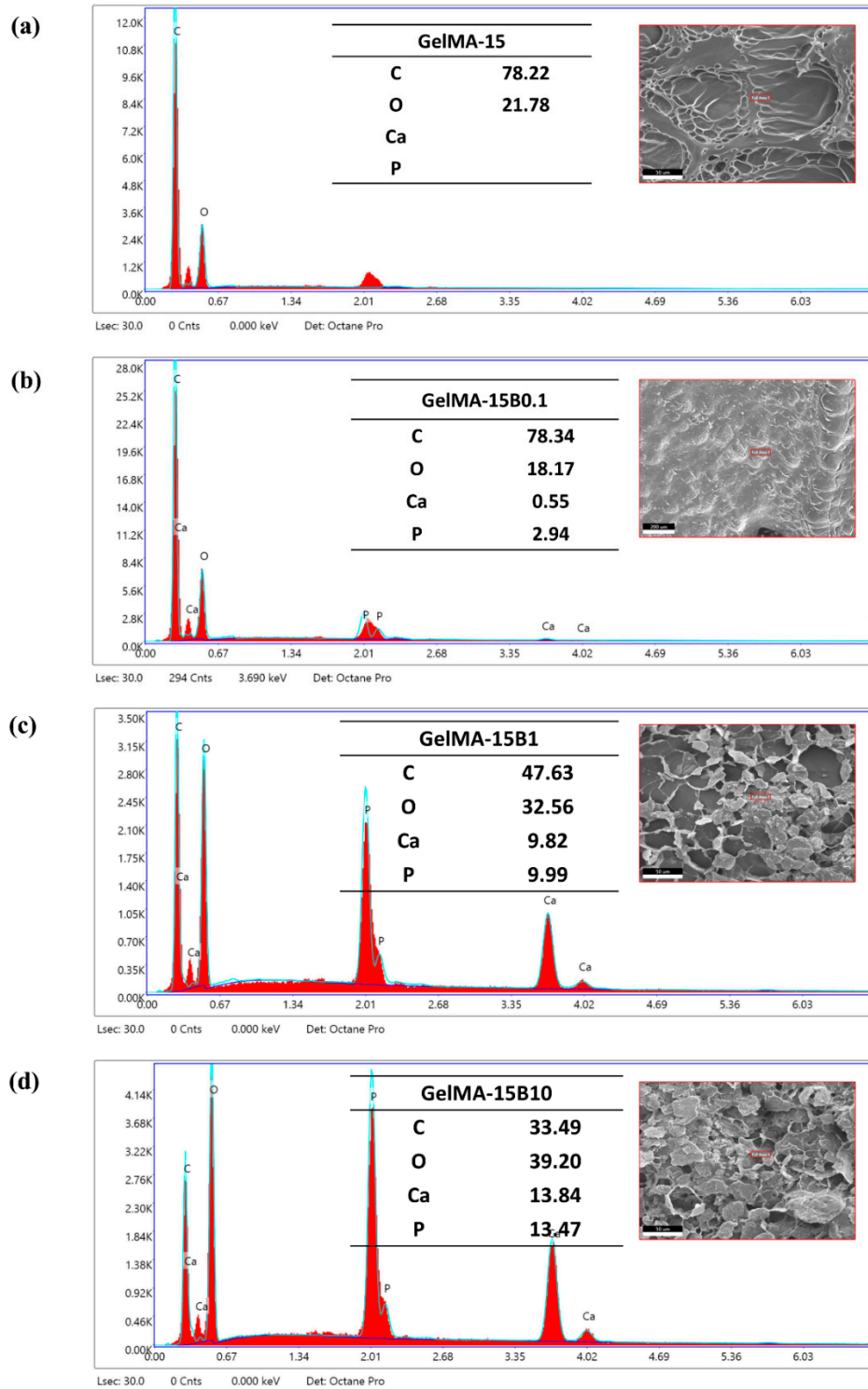


Figure S1. <sup>1</sup>H-NMR spectra of gelatin and gelatin methacryloyl (GelMA) monomer with degree of substitution.



**Figure S2.** The energy-dispersive X-ray (EDX) profile of (a) GelMA-15, (b) GelMA-15B0.1, (c) GelMA-15B1, (d) GelMA-15B10

**Table S1.** Maximum stress and Compressive Modulus for each hydrogel groups.

<b>Groups</b>	<b>Maximum stress(kPa)</b>	<b>Compressive Modulus(kPa)</b>
GelMA-15	25.38 ± 0.30	4.13 ± 0.07
GelMA-15B0.1	55.78 ± 0.61	6.69 ± 0.02
GelMA-15B1	222.79 ± 0.59	81.69 ± 0.30
GelMA-15B10	442.26 ± 1.29	93.66 ± 0.44