

Supplementary Materials

Enantioselective Self-assembled Nanofibrillar Network with Glutamide-based Organogelator

Nao Nagatomo¹, Hisashi Oishi¹, Yutaka Kuwahara¹, Makoto Takafuji^{1,*}, Reiko Oda², Taisuke Hamada³, and Hirotaka Ihara^{1,3,*}

¹ Department of Applied Chemistry and Biochemistry, Kumamoto University, 2-39-1 Kurokami, Chuo-ku, Kumamoto 860-8555, Japan

² Institut de Chimie & Biologie des Membranes & des Nano-objects, CNRS, Pessac 33607, France

³ National Institute of Technology, Okinawa College, 905 Henoko, Nago, Okinawa 905-2192, Japan

* Correspondence: ihara@kumamoto-u.ac.jp; Tel.: +81-96-342-3662

Supplementary figures

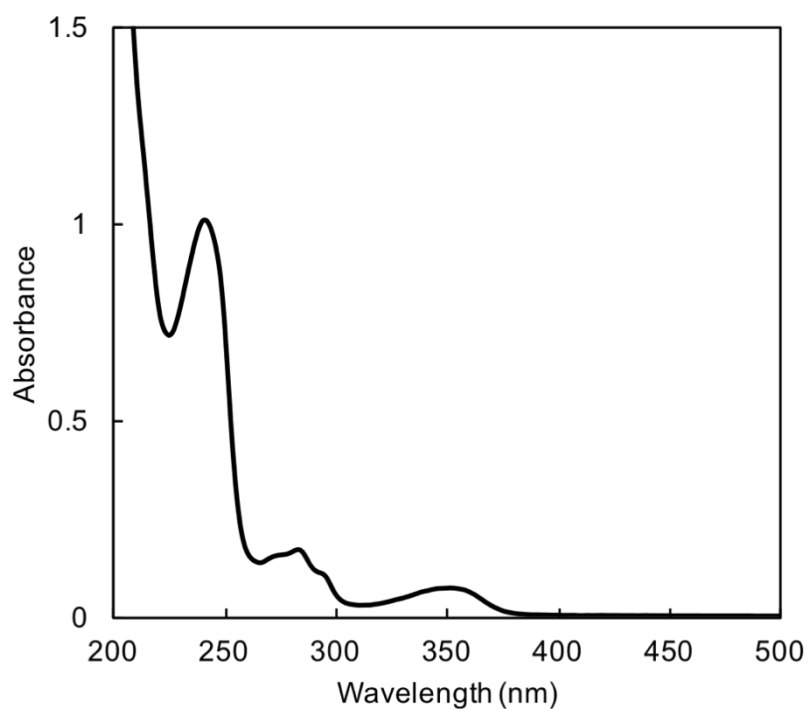


Figure S1. UV-visible spectrum of R-BD in 95:5 (v/v) methylcyclohexane:THF. Concentration: 0.05 mM. Temperature: 0 °C.

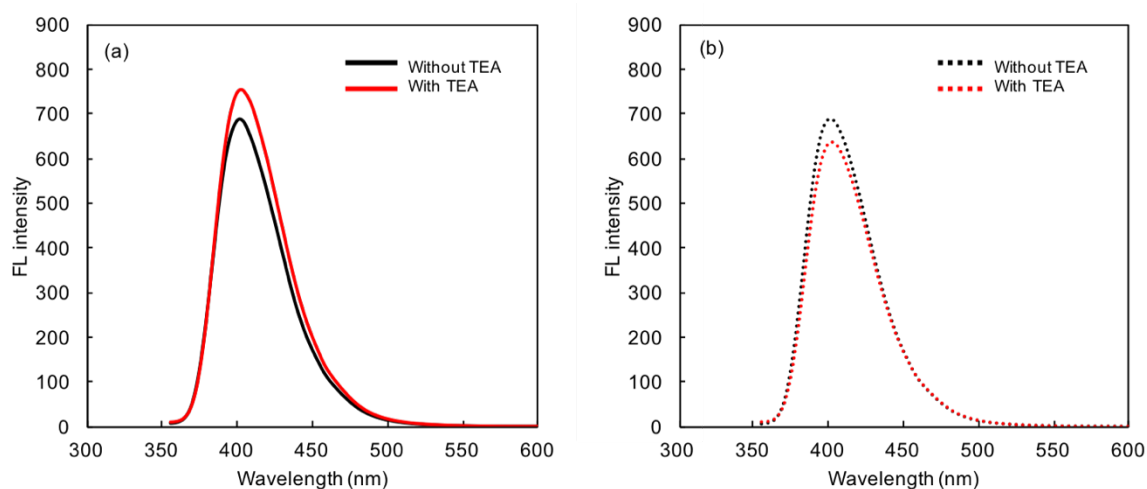


Figure S2. Fluorescence spectra of (a) R-BD and (b) S-BD in 95:5 (v/v) methylcyclohexane:THF containing G-CA. Concentrations: G-CA, 0.75 mM; BD, 0.05 mM; TEA, 0.5 mM. Temperature: 0 °C. Excitation: 350 nm.