

SUPPLEMENTARY INFORMATION

# Systematic analysis on the effect of sintering temperature for optimized performance of $\text{Li}_{0.15}\text{Ni}_{0.45}\text{Zn}_{0.4}\text{O}_2\text{-Gd}_{0.2}\text{Ce}_{0.8}\text{O}_2\text{-Li}_2\text{CO}_3\text{-Na}_2\text{CO}_3\text{-K}_2\text{CO}_3$ based 3D printed single-layer ceramic fuel cell

Muhammad Imran Asghar <sup>1,2,\*</sup>, Pyry Mäkinen <sup>1</sup>, Sini Virtanen <sup>1</sup>, Anna Maitre <sup>1</sup>, Maryam Borghei <sup>3</sup> and Peter D. Lund <sup>1</sup>

<sup>1</sup> New Energy Technologies Group, Department of Applied Physics, School of Science, Aalto University, P.O. BOX 15100, FI-00076 Espoo, Finland; imran.asghar@aalto.fi; pyry.makinen@aalto.fi; sini.n.virtanen@aalto.fi; anna.maitre@aalto.fi; peter.lund@aalto.fi

<sup>2</sup> Faculty of Physics and Electronic Science, Hubei University, Wuhan, Hubei, 430062, China; imran.asghar@aalto.fi

<sup>3</sup> Department of Bioproducts and Biosystems, School of Chemical Engineering, Aalto University, FI-00076 Espoo, Finland; maryam.borghei@aalto.fi

\* Correspondence: imran.asghar@aalto.fi

## Supporting results

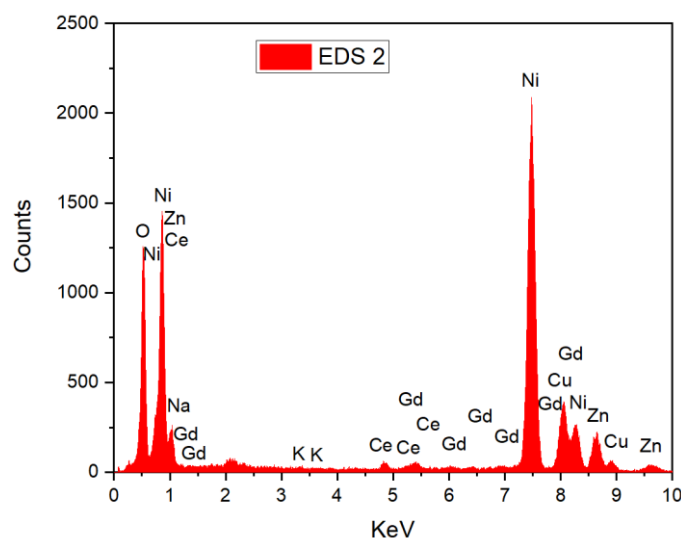


Figure S1. EDS of the composite powder from spot EDS 2 in Figure 4a.

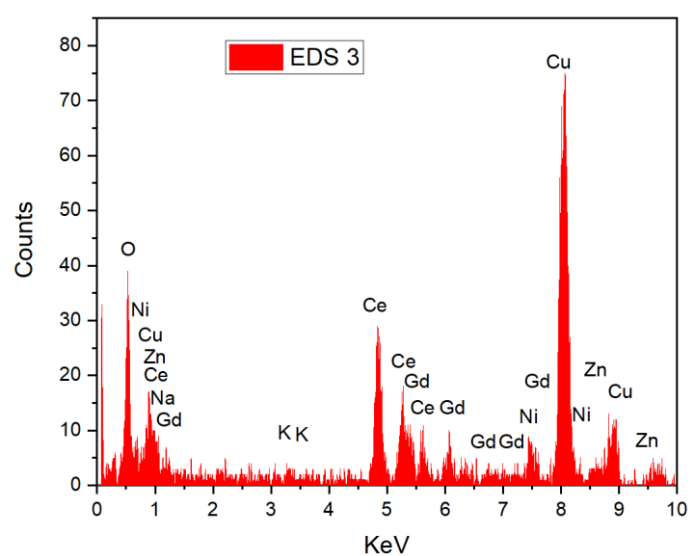


Figure S2. EDS of the composite powder from spot EDS 3 in Figure 4a.